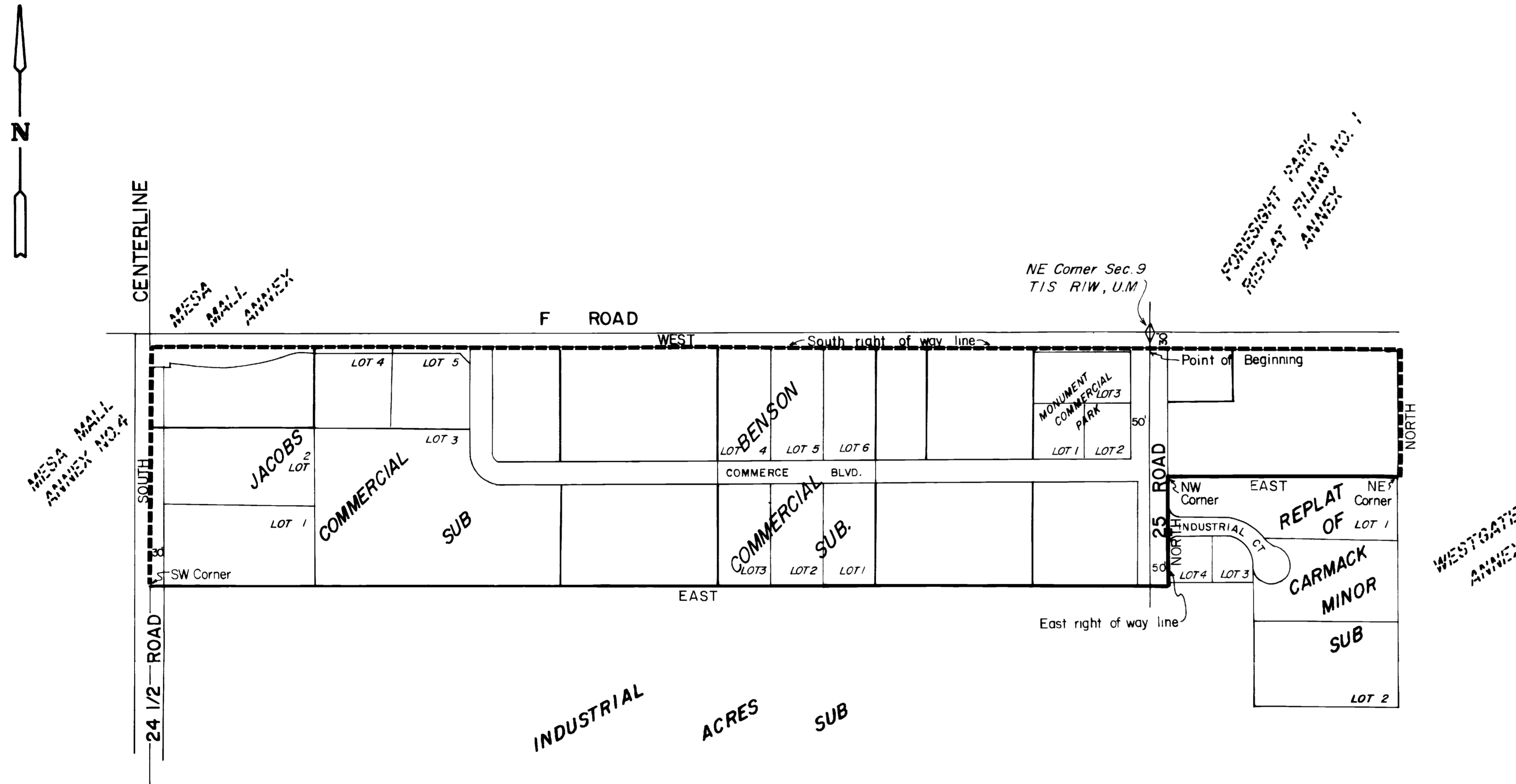


# COMMERCE BOULEVARD ANNEXATION

## DESCRIPTION

Beginning at a point 30' south of the NE corner Section 9, Township 1 South, Range 1 West of the Ute Meridian, thence West along South line F Road right of way to intersection with centerline 24 1/2 Road, thence South along said centerline to a point west of Southwest corner Lot 1 Jacobs Commercial Subdivision, thence East to said Southwest corner Lot 1, thence East along South line said Jacobs Commercial Subdivision and said South line projected Easterly to the East line 25 Road right of way, thence North along said East line 25 Road to the NW corner Lot 1 Carmack Minor Subdivision Replat, thence East along North line said Lot 1 to Northeast corner said Lot 1, thence North to South line F Road right of way, thence West along said South line F Road to the point of beginning.

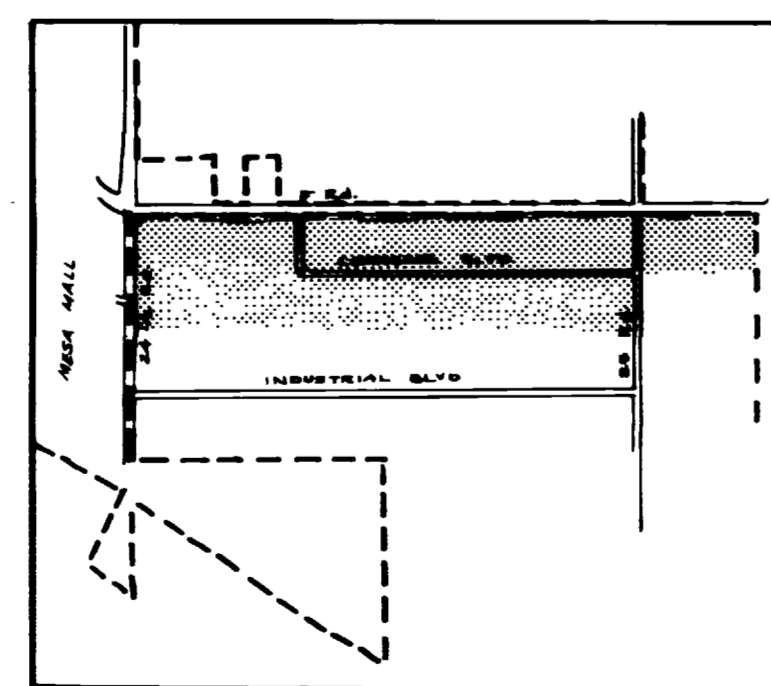


## LEGEND

Boundary of existing corporate limits -----  
 Boundary of new corporate limits \_\_\_\_\_

## AREA OF ANNEXATION

Boundary contiguous to existing corporate limits 4260 feet, more or less  
 Perimeter of area to be annexed 7860 feet, more or less  
 Total annexed area in acres 43, more or less



LOCATION MAP

2136  
ORDINANCE NO.

8/7/83  
EFFECTIVE DATE

REVISION	DESCRIPTION	DATE	DRAWN BY	DATE	SCALE
REVISION A			JTH	8/83	PLAN
REVISION B					PROFILE
REVISION C					
REVISION D					

DEPARTMENT OF PUBLIC WORKS AND UTILITIES  
 ENGINEERING DIVISION  
 CITY OF GRAND JUNCTION, COLORADO

COMMERCE ANNEXATION

SHEET NO. 1  
 OF 1  
 FILE NO.