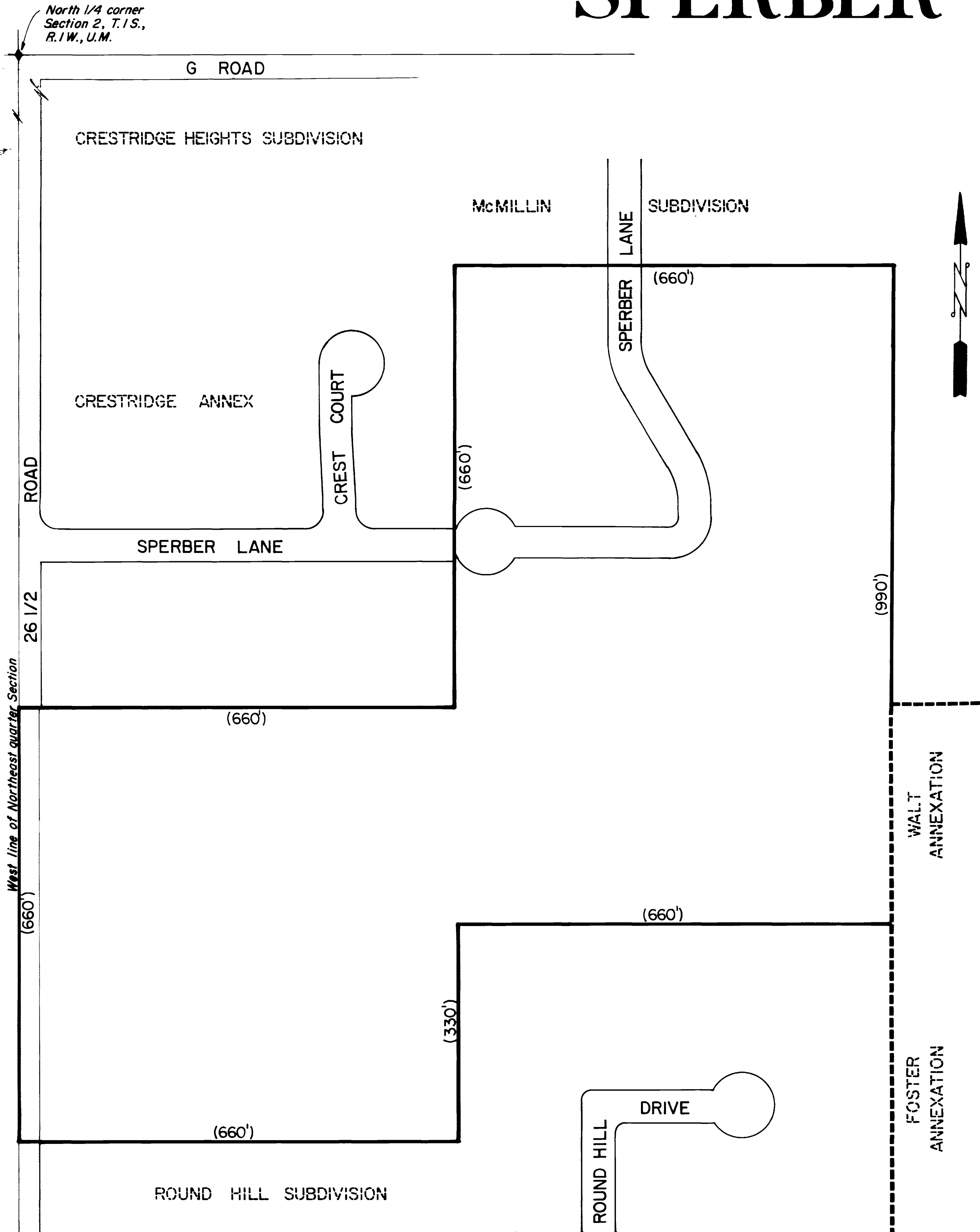


SPERBER ANNEXATION



Property Description

The Southeast 1/4 of the Northwest 1/4 of the Northeast 1/4, and the Northwest 1/4 of the Southwest 1/4 of the Northeast 1/4, and the North 1/2 of the Northeast 1/4 of the Southwest 1/4 of the Northeast 1/4, Section 2, Township 1 South, Range 1 West, Ute Meridian.

Legend

- Boundary of existing corporate limits -----
- Boundary of new corporate limits _____

Area of Annexation

Boundary contiguous to existing corporate limits	330 ft±
Perimeter of area to be annexed	5,280 ft±
Total annexed area in square feet	1,089,000 sq. ft±
Total annexed area in acres	25 Acres±

Ordinance Number

2182

Effective Date

May 6, 1984

This annexation map has been prepared under my direction from existing property descriptions obtained from the Mesa County Assessor's Maps. No attempt has been made to determine the legal property boundaries of the properties involved.

Kenneth A. Reedy
 Kenneth A. Reedy, City Engineer

Note:
 () All dimensions so designated are assumed based on proportion to a mile.

DESCRIPTION	DATE	DRAWN BY	DATE	SCALE
REVISION Δ		Lesley	4/84	PLAN PROFILE
REVISION Δ		Don Warner	9/84	HORIZ. V.T.S. HORIZ. VERT.
REVISION Δ				
REVISION Δ				

DEPARTMENT OF PUBLIC WORKS AND UTILITIES
 ENGINEERING DIVISION
 CITY OF GRAND JUNCTION, COLORADO

Annexation Map
 Sperber Annexation

SHEET NO. _____
OF _____
FILE NO. _____