

ANNEXATION MAP

# HARRIS ANNEXATION

## DESCRIPTION

*Beginning at the SW corner SE 1/4 NW 1/4 Section 10 T1S, R1W, Ute Meridian, thence N 0°11' W 427.5 feet, thence S 89°55' E 611.4 feet, thence S 0°11' E 427.5 feet, thence N 89°55' W 611.4 feet to beginning.*

## LEGEND

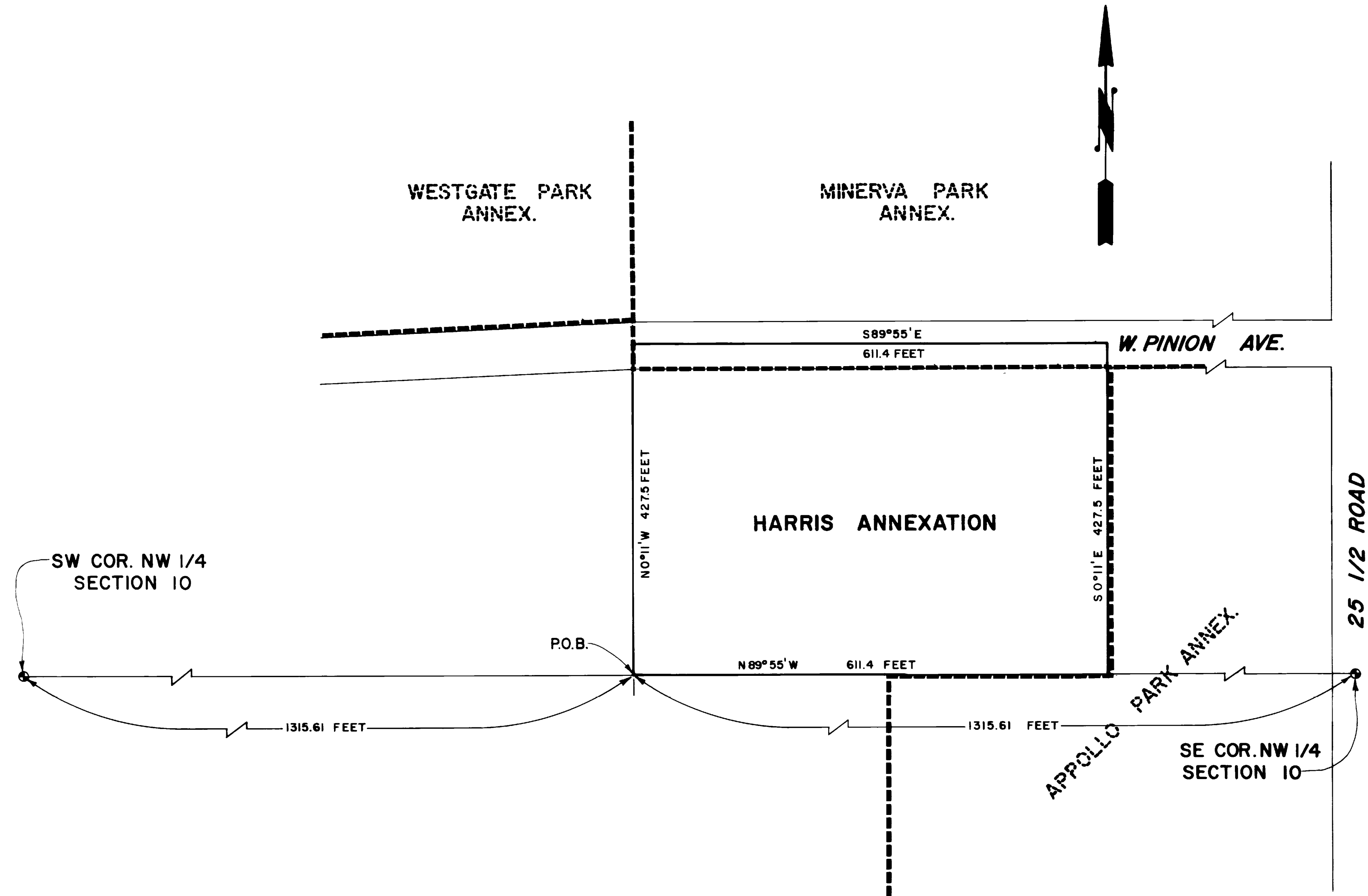
Boundary of existing corporate limits   
Boundary of new corporate limits 

## AREA OF ANNEXATION

Perimeter of area to be annexed approx. 2,017.8 feet  
Boundary contiguous to corporate limits approx. 1,354.06 feet  
Annexed area in acres approx. 5.58 acres

ORDINANCE NO.  
**2164**

EFFECTIVE DATE  
**1/22/84**



This annexation map has been prepared under my direction from existing property descriptions obtained from the Mesa County Assessor's Maps. No attempt has been made to determine the legal property boundaries of the properties involved.

*Kenneth A. Reedy*  
Kenneth A. Reedy, City Engineer

DESCRIPTION	DATE	DRAWN BY PSF	DATE 12/28/83	SCALE
REVISION Δ		CHECKED BY DW	DATE 12/29/83	PLAN
REVISION Δ		APPROVED BY	DATE	HORIZ. 1"=100'
REVISION Δ		FIELD BOOK NO.	PAGE	PROFILE
REVISION Δ				HORIZ.
				VERT.

**DEPARTMENT OF PUBLIC WORKS AND UTILITIES**  
**ENGINEERING DIVISION**  
**CITY OF GRAND JUNCTION, COLORADO**

**HARRIS ANNEXATION**

SHEET NO.	
OF	
FILE NO.	