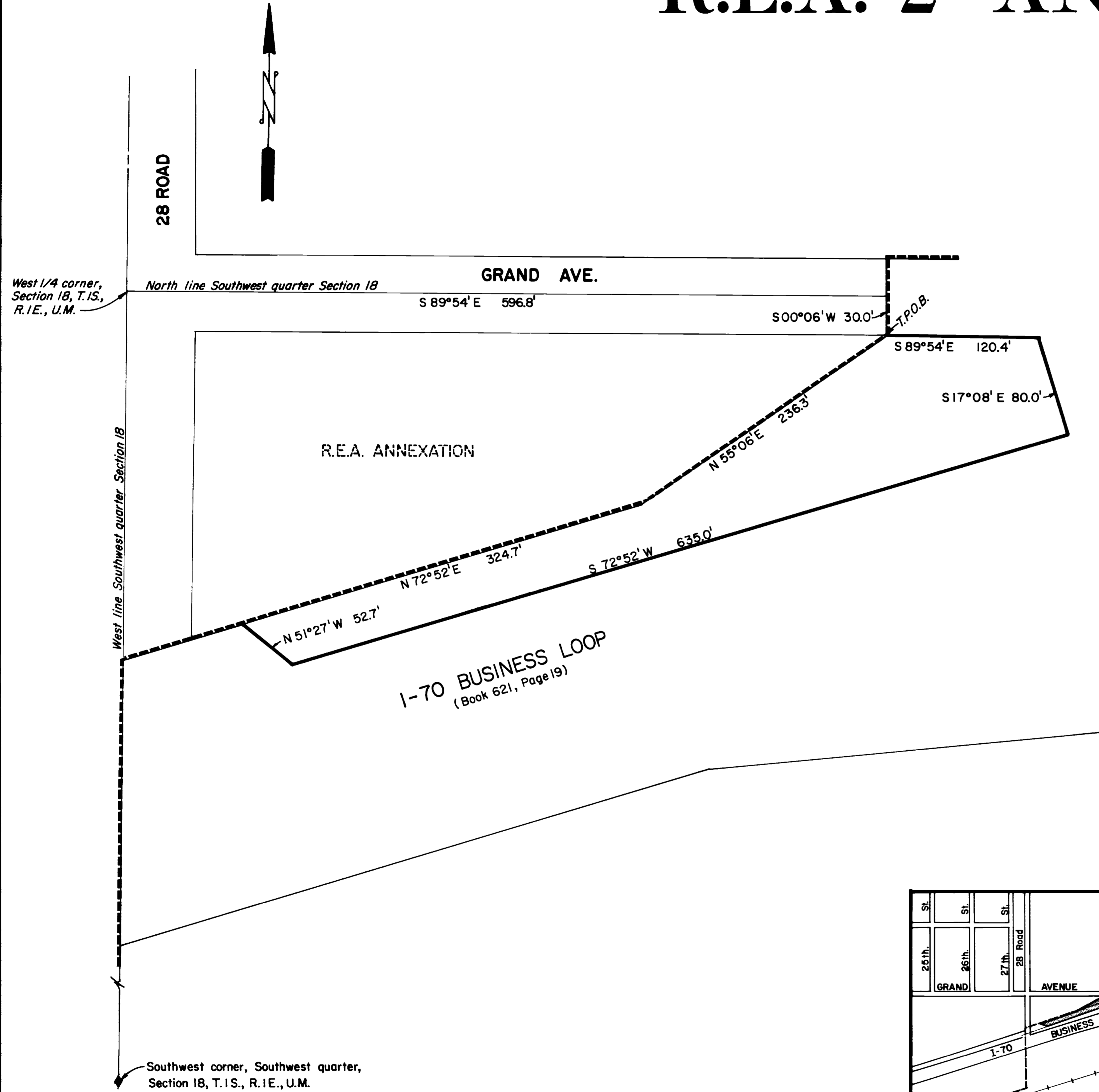


Annexation Map

R.E.A.#2 ANNEXATION



Property Description

Commencing at the West 1/4 corner of Section 18, Township 1 South, Range 1 East, Ute Meridian; thence S. 89°54'E along the north line of the SW 1/4 of said Section 18 a distance of 596.8 feet; thence S. 00°06'W., a distance of 30.0 feet to a point on the south right of way line of Grand Avenue (May 1981) which is the true point of beginning; Thence S. 89°54'E., a distance of 120.4 feet; Thence S. 17°08'E., a distance of 80.0 feet; Thence S. 72°52'W., a distance of 635.0 feet; Thence N. 51°27'W., a distance of 52.7 feet to a point on the northerly right of way line of State Highway 70 Business Loop (May 1981) as recorded in Book 621, Page 19 of the Mesa County Records. Thence along said right of way line, N. 72°52'E., a distance of 324.7 feet; Thence continuing along said right of way line, N. 55°06'E., a distance of 236.3 feet, more or less, to the true point of beginning.

Legend

Boundary of existing corporate limits -----
 Boundary of new corporate limits _____

Area of Annexation

Boundary contiguous to existing corporate limits _____ 561 ft.
 Perimeter of area to be annexed _____ 1,449.1 ft.
 Total annexed area in square feet _____ 42,643.10 sq. ft.
 Total annexed area in acres _____ 0.98 Acres

Ordinance Number -

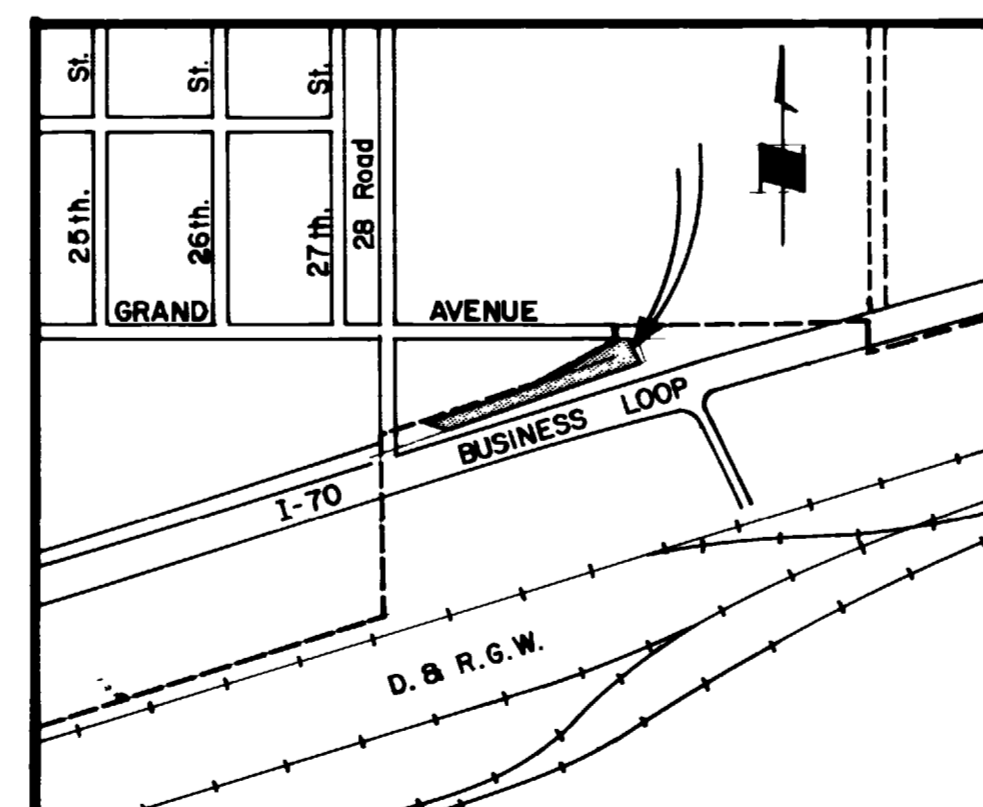
2181

Effective Date

May 6, 1984

This annexation map has been prepared under my direction from existing property descriptions obtained from the Mesa County Assessor's Maps. No attempt has been made to determine the Legal property boundaries of the properties involved.

Kenneth A. Reedy
 Kenneth A. Reedy, City Engineer



Vicinity Map

REVISION Δ	DESCRIPTION	DATE	DRAWN BY <i>Lesley</i>	DATE <i>4-84</i>	SCALE
REVISION Δ			CHECKED BY <i>Don Warner</i>	DATE <i>4-84</i>	PLAN
REVISION Δ			APPROVED BY	DATE	PROFILE
REVISION Δ			FIELD BOOK NO.	PAGE	HORIZ. 1"=50'
					VERT.

DEPARTMENT OF PUBLIC WORKS AND UTILITIES
ENGINEERING DIVISION
CITY OF GRAND JUNCTION, COLORADO

Annexation Map
R.E.A.#2 Annexation

SHEET NO. _____
OF _____
FILE NO. _____