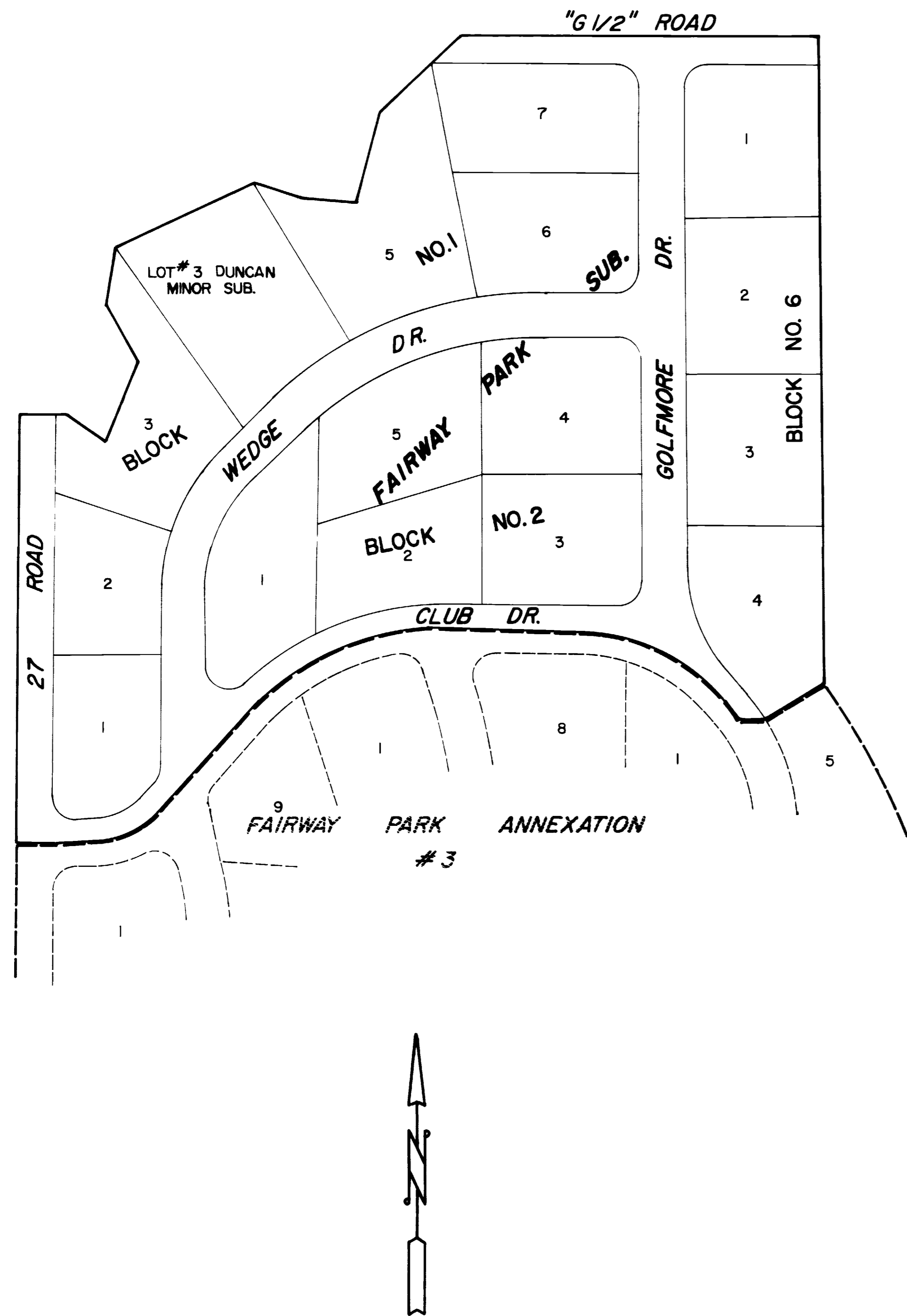


FAIRWAY PARK ANNEXATION # 4

ANNEXATION MAP



DESCRIPTION

That part of the N.E. quarter of Section 36, T.1N., R.1W., U.M. More particularly described as follows
 Lots 1,2,3,5,6 & 7 Block 1, Lots 1 through 5 Block 2 and Lots 1 through 4 Block 6 all in Fairway
 Park Subdivision and Lot 3 of Duncan Minor Subdivision together with adjacent street Right of Way
 (27 Road East 1/2 R.O.W. Only)

LEGEND

Boundary of existing corporate limits -----
 Boundary of new corporate limits =====

AREA OF ANNEXATION

Boundary contiguous to existing corporate limits approx. 1,016 ft.
 Perimeter of area to be annexed approx. 3,441 ft.
 Total area to be annexed in acres 12.63

ORDINANCE NUMBER EFFECTIVE DATE

2244

11-3-85

This annexation map has been prepared under my direction from existing property descriptions obtained from the Mesa County Assessors Maps. No attempt has been made to determine the legal property boundaries of the properties involved.

Don Newton
 Don Newton, City Engineer

DESCRIPTION	DATE	DRAWN BY <i>Lester Mader</i>	DATE <i>9-20-85</i>	SCALE
REVISION Δ		CHECKED BY <i>J.D.M.</i>	DATE <i>9-85</i>	PLAN PROFILE
REVISION Δ		APPROVED BY <i>D.W.</i>	DATE <i>9-85</i>	HORIZ. <i>1"=100'</i> HORIZ.
REVISION Δ		FIELD BOOK NO.	PAGE	VERT.

DEPARTMENT OF PUBLIC WORKS AND UTILITIES
ENGINEERING DIVISION
CITY OF GRAND JUNCTION, COLORADO

FAIRWAY PARK ANNEXATION # 4

SHEET NO. _____
OF _____
FILE NO. _____