

# FAIRWAY PARK 1ST ADDITION ANNEXATION

## ANNEXATION MAP

### DESCRIPTION

Beginning at a point 660 ft North of the Southwest Corner of Section 36, Township 1 North, Range 1 West, Ute Meridian, thence East along the centerline of Chipper Drive to the intersection with the centerline of Golfmore Drive, thence North 372.06 ft to a point East of the Northeast Corner of Lot 5, Block 5, Fairway Park Subdivision, thence West to the West line of Section 36, thence South to the point of beginning.

Above being Lot 5, Block 5, Fairway Park Subdivision and the 1st Addition to Fairway Park Subdivision except a part of Lot 4, Block 7, Fairway Park 1st Addition described as beginning at the Southeast Corner of Lot 2, Block 3, Fairway Park Subdivision, thence West 163.8 ft., thence North 65° East 85 ft., thence South 67° 31' East 93.9 ft. to the point of beginning.

### LEGEND

Boundary of existing corporate limits —————

Boundary of new corporate limits —————

### AREA OF ANNEXATION

Boundary contiguous to existing corporate limits ————— approx. 488 ft.

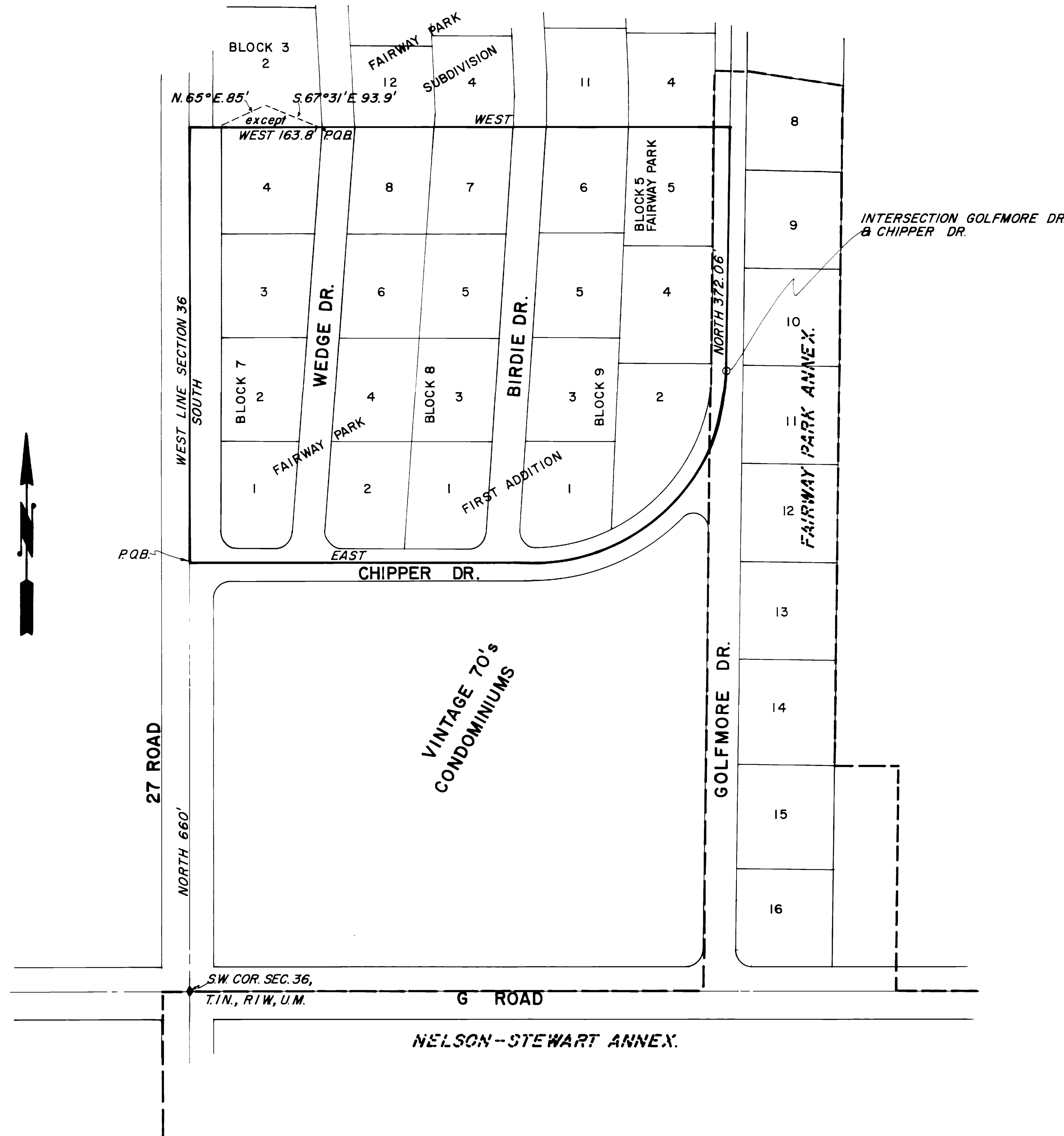
Perimeter of area to be annexed ————— approx. 2885 ft.

Total area to be annexed in acres ————— 12.38

<u>ORDINANCE NUMBER</u>	<u>EFFECTIVE DATE</u>
2219	1-6-85

This annexation map has been prepared under my direction from existing property descriptions obtained from the Mesa County Assessor's Maps. No attempt has been made to determine the legal property boundaries of the properties involved.

*Kenneth A. Reedy*  
Kenneth A. Reedy, City Engineer



REVISION $\Delta$	DESCRIPTION	DATE	DRAWN BY D.L.C.	DATE 12-12-84	SCALE	<b>DEPARTMENT OF PUBLIC WORKS AND UTILITIES</b> <b>ENGINEERING DIVISION</b> <b>CITY OF GRAND JUNCTION, COLORADO</b>	FAIRWAY PARK 1ST ADDITION ANNEXATION	SHEET NO. _____
REVISION $\Delta$			CHECKED BY T.A.B.	DATE 12-14-84	PLAN			OF _____
REVISION $\Delta$			APPROVED BY D.W.	DATE 12-14-84	HORIZ 1"=100'			FILE NO.
REVISION $\Delta$			FIELD BOOK NO. _____	PAGE _____	VERT. _____			01-203