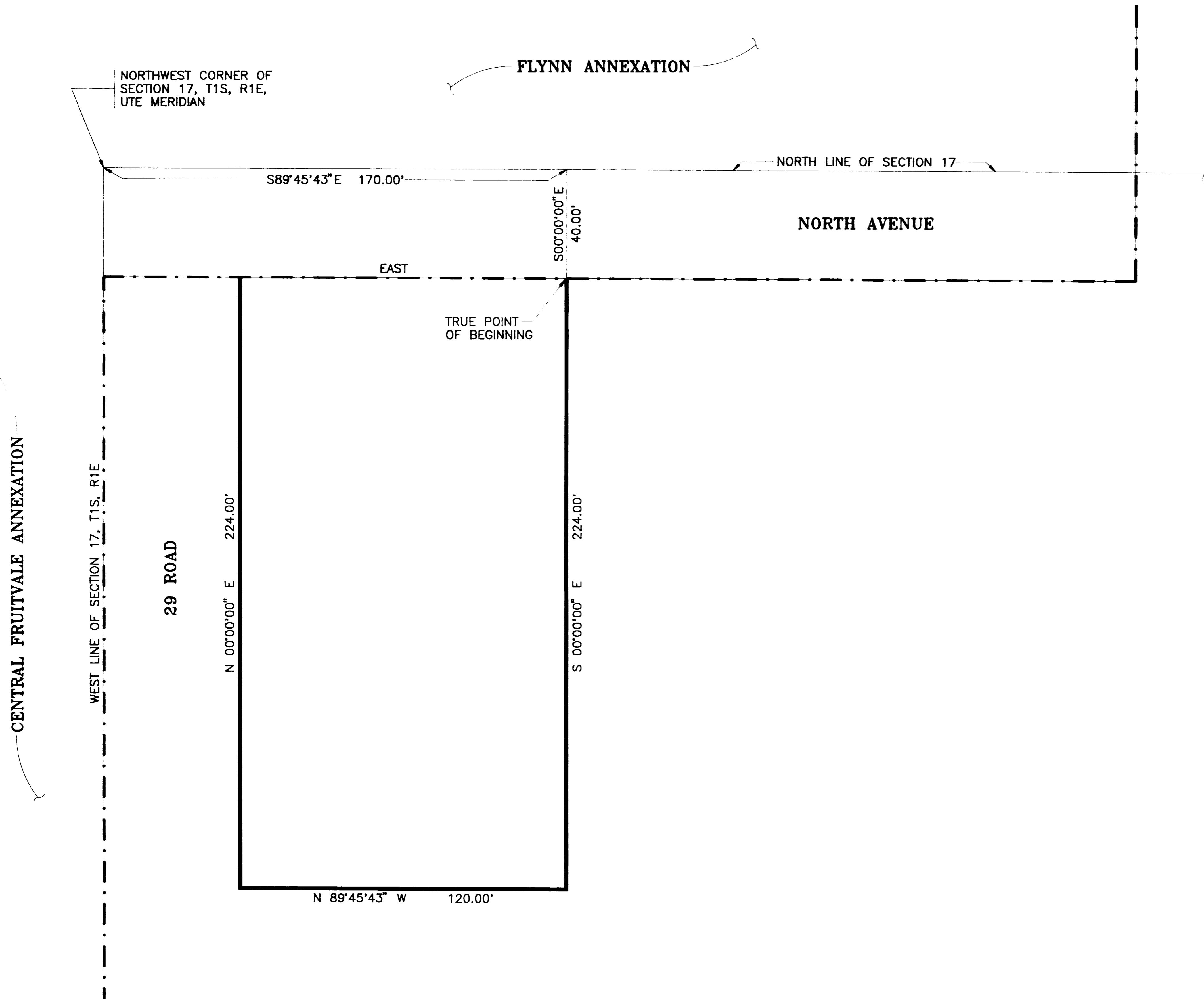


# DIAMOND SHAMROCK ANNEXATION #2



DESCRIPTION

BEGINNING AT THE NORTHWEST CORNER OF SECTION 17, T1S, R1E, UTE MERIDIAN; THENCE S89°45'43" E ALONG THE NORTH LINE OF SAID SECTION 17 170.00 FEET; THENCE S00°00'00" E 40.00 FEET; TO THE TRUE POINT OF BEGINNING; THENCE S00°00'00" E 224.00 FEET; THENCE N89°45'43" W 120.00 FEET; THENCE N00°00'00" E 224.00 FEET; THENCE EAST TO THE TRUE POINT OF BEGINNING.

LEGEND

- Annexation Boundary
- Existing City Limits

AREA OF ANNEXATION

Annexation Perimeter	688.00 FT.
Contiguous Perimeter	120.00 FT.
Area in Square Feet	26,879.77
Area in Acres	0.62

ORDINANCE NUMBER

2525

EFFECTIVE DATE

AUGUST 18, 1991

The Description(s) contained herein have been derived from subdivision plats and deed description as they appear in the office of the Mesa County Clerk and Recorder. This plat does not constitute a legal survey, and is not intended to be used as a means for establishing or verifying property boundary lines.

*J. Don Newton*  
J. Don Newton, City Engineer

REVISION	DATE	DRAWN BY	KADEL	DATE	5/91	SCALE	PROFILE
REVISION		CHECKED BY		DATE		HORIZ. 1"=20'	
REVISION		APPROVED BY		DATE		HORIZ.	
REVISION		FIELD BOOK NO.		PAGE		VERT.	

DEPARTMENT OF PUBLIC WORKS AND UTILITIES  
ENGINEERING DIVISION  
CITY OF GRAND JUNCTION, COLORADO

DIAMOND SHAMROCK ANNEX. #2

SHEET NO. 1	OF 1
FILE NO. DIAMOND.DWG	