

# GALAXY ANNEXATION

## DESCRIPTION

PARCEL NO. 1:

A TRACT OF LAND COMPRISED OF THE NW1/4 SW1/4 SE1/4 OF SECTION 35, TOWNSHIP 1 NORTH, RANGE 1 WEST OF THE UTE MERIDIAN, MESA COUNTY, COLORADO, BEING MORE PARTICULARLY DESCRIBED AS FOLLOWS:

BEGINNING AT THE SOUTHWEST CORNER OF THE NW1/4 SW1/4 SE1/4 OF SAID SECTION 35; THENCE NORTH A DISTANCE OF 660.30 FEET TO THE NORTHWEST CORNER OF THE SAID NW1/4 SW1/4 SE1/4; THENCE EAST A DISTANCE OF 660.0 FEET TO THE NORTHEAST CORNER OF THE SAID NW1/4 SW1/4 SE1/4, SAID POINT BEING COMMON WITH THE NORTHWEST CORNER OF GALAXY SUBDIVISION; THENCE SOUTH ALONG THE WEST LINE OF GALAXY SUBDIVISION A DISTANCE OF 660.30 FEET TO THE SOUTHEAST CORNER OF THE SAID NW1/4 SW1/4 SE1/4, SAID POINT BEING COMMON WITH THE NORTHEAST CORNER OF NINA MAE SUBDIVISION; THENCE WEST 660.0 FEET TO THE POINT OF BEGINNING.

PARCEL NO. 2:

A TRACT OF LAND LYING IN THE E1/2 SW1/4 SE1/4 OF SECTION 35, TOWNSHIP 1 NORTH, RANGE 1 WEST OF THE UTE MERIDIAN, MESA COUNTY, COLORADO, BEING MORE PARTICULARLY DESCRIBED AS FOLLOWS:

BEGINNING AT A POINT ON THE SOUTH LINE OF THE E1/2 SW1/4 SE1/4 OF SAID SECTION 35 FROM WHENCE THE S1/4 CORNER OF SAID SECTION 35 BEARS WEST A DISTANCE OF 660.75 FEET; THENCE N 00°02'00" W A DISTANCE OF 40.0 FEET TO THE SOUTHWEST CORNER OF GALAXY SUBDIVISION AS RECORDED IN PLAT BOOK 9 AT PAGE 119 IN THE OFFICE OF THE MESA COUNTY CLERK AND RECORDER; THENCE CONTINUING N 00°02'00" W ALONG THE WEST LINE OF SAID GALAXY SUBDIVISION A DISTANCE OF 1279.90 FEET TO THE NORTHWEST CORNER OF GALAXY SUBDIVISION; THENCE EAST ALONG THE NORTH LINE OF SAID GALAXY SUBDIVISION A DISTANCE OF 659.24 FEET TO THE NORTHEAST CORNER OF GALAXY SUBDIVISION; THENCE S 00°06'00" E ALONG THE EAST LINE OF SAID GALAXY SUBDIVISION A DISTANCE OF 1279.90 FEET TO THE SOUTHEAST CORNER OF GALAXY SUBDIVISION; THENCE CONTINUING S 00°06'00" E A DISTANCE OF 40.0 FEET TO THE SOUTH LINE OF THE E1/2 SW1/4 SE1/4 OF SAID SECTION 35; THENCE WEST ALONG THE SOUTH LINE OF THE E1/2 SW1/4 SE1/4 OF SAID SECTION 35 A DISTANCE OF 660.75 FEET TO THE POINT OF BEGINNING.

### AREA OF ANNEXATION

Annexation Perimeter	5279.79 FT.
Contiguous Perimeter	1980.20 FT.
Area in Square Feet	1306941.08
Area in Acres	30.00

### ORDINANCE NUMBER

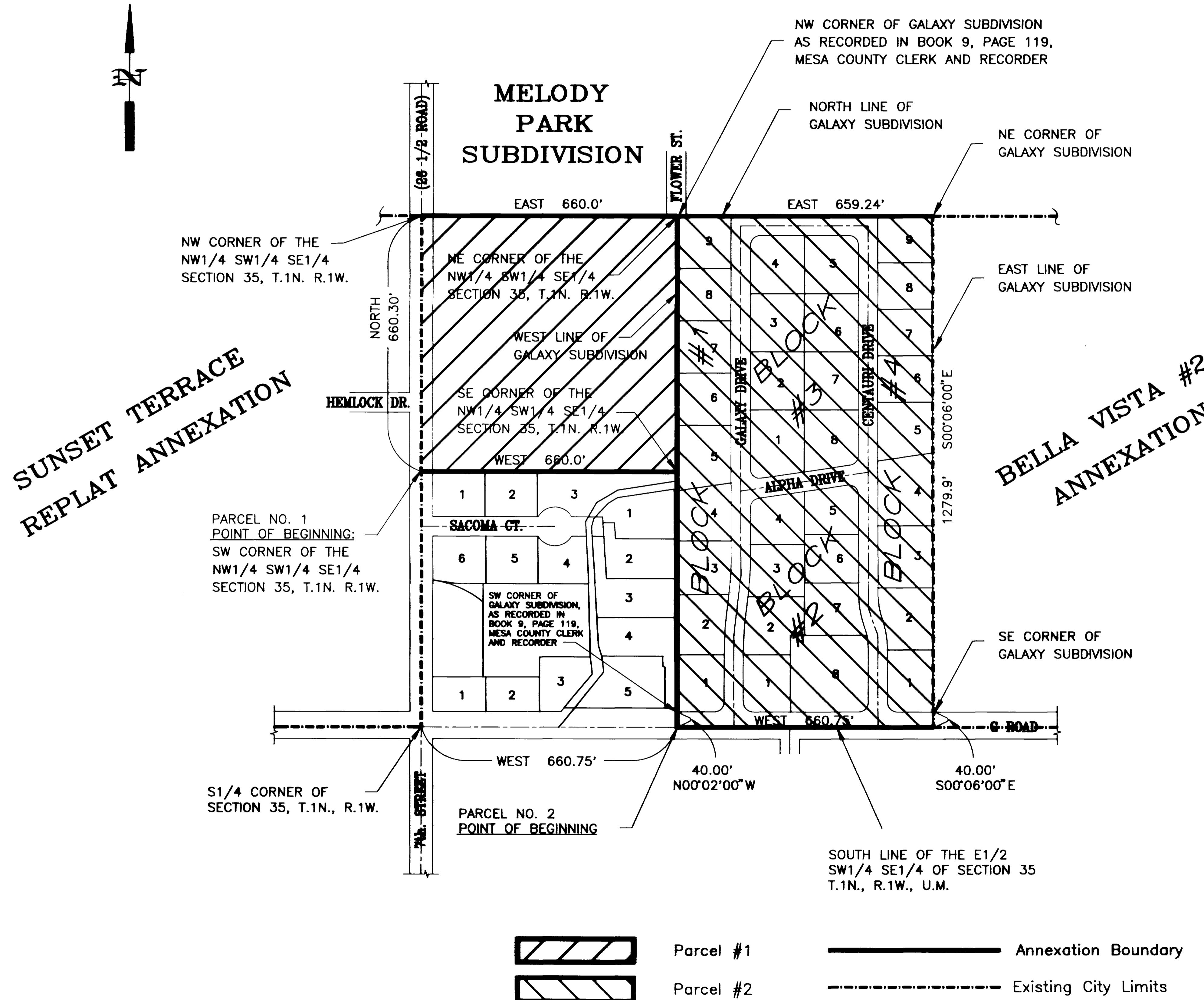
2611

### EFFECTIVE DATE

DECEMBER 6, 1992

The Description(s) contained herein have been derived from subdivision plats and deed description as they appear in the office of the Mesa County Clerk and Recorder. This plat does not constitute a legal survey, and is not intended to be used as a means for establishing or verifying property boundary lines.

*James L. Shanks*  
 JAMES L. SHANKS, DIRECTOR OF PUBLIC WORKS & UTILITIES



DESCRIPTION	DATE	DRAWN BY	McCUTCHEN	DATE	8/92	SCALE	
REVISION		CHECKED BY	T.W.	DATE	8/92	PLAN	PROFILE
REVISION		APPROVED BY	J.L.S.	DATE	8/92	HORIZ.	N.T.S.
REVISION		FIELD BOOK NO.		PAGE		HORIZ.	VERT.

DEPARTMENT OF PUBLIC WORKS AND UTILITIES  
 ENGINEERING DIVISION  
 CITY OF GRAND JUNCTION, COLORADO

GALAXY ANNEXATION  
 SHEET NO. 1 OF 1  
 FILE NO. GALAXY.DWG