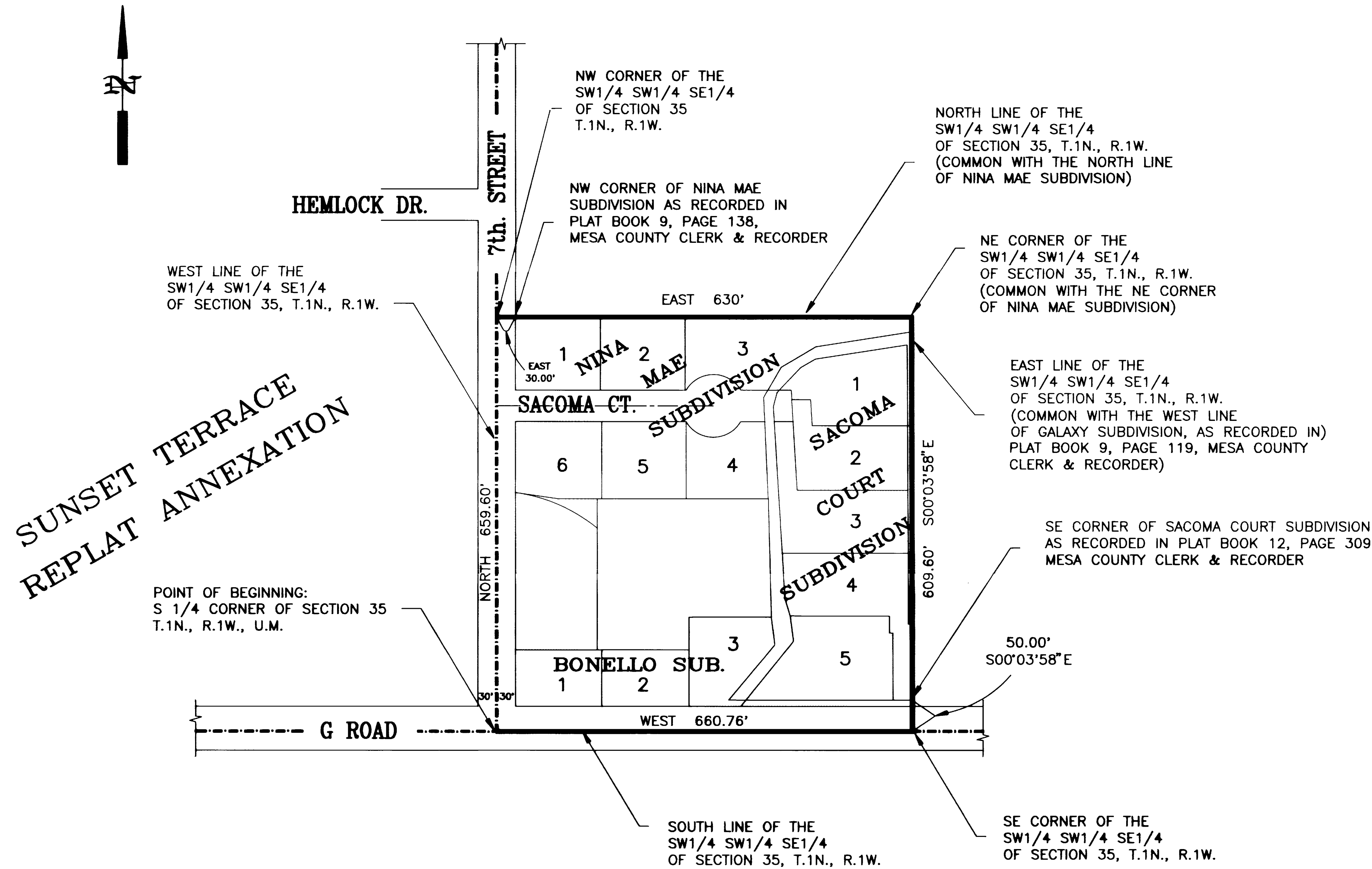


# NINA MAE ANNEXATION

## DESCRIPTION

A TRACT OF LAND CONSISTING OF THE SW1/4 SW1/4 SE1/4 OF SECTION 35, TOWNSHIP 1 NORTH, RANGE 1 WEST OF THE UTE MERIDIAN, MESA COUNTY, COLORADO, BEING MORE PARTICULARLY DESCRIBED AS FOLLOWS:

BEGINNING AT THE S 1/4 CORNER OF SAID SECTION 35; THENCE NORTH ALONG THE WEST LINE OF THE SW1/4 SW1/4 SE1/4 OF SAID SECTION 35 A DISTANCE OF 659.60 FEET TO THE NORTHWEST CORNER OF THE SW1/4 SW1/4 SE1/4 OF SAID SECTION 35; THENCE EAST ALONG THE NORTH LINE OF THE SW1/4 SW1/4 SE1/4 OF SAID SECTION 35 A DISTANCE OF 30.0 FEET TO THE NORTHWEST CORNER OF NINA MAE SUBDIVISION AS RECORDED IN PLAT BOOK 9 AT PAGE 138 IN THE OFFICE OF THE MESA COUNTY CLERK AND RECORDER; THENCE CONTINUING EAST ALONG THE NORTH LINE OF THE SW1/4 SW1/4 SE1/4 OF SAID SECTION 35, SAID LINE BEING COMMON WITH THE NORTH LINE OF SAID NINA MAE SUBDIVISION, A DISTANCE OF 630.0 FEET TO THE NORTHEAST CORNER OF THE SW1/4 SW1/4 SE1/4 OF SAID SECTION 35; THENCE S 00°03'58" E (CALCULATED) ALONG THE EAST LINE OF THE SW1/4 SW1/4 SE1/4 OF SAID SECTION 35, SAID LINE BEING COMMON WITH THE WEST LINE OF GALAXY SUBDIVISION AS RECORDED IN PLAT BOOK 9 AT PAGE 119 IN THE OFFICE OF THE MESA COUNTY CLERK AND RECORDER, A DISTANCE OF 609.60 FEET TO THE SOUTHEAST CORNER OF SACOMA COURT SUBDIVISION AS RECORDED IN PLAT BOOK 12 AT PAGE 309 IN THE OFFICE OF THE MESA COUNTY CLERK AND RECORDER; THENCE CONTINUING S 00°03'58" E ALONG THE EAST LINE OF THE SW1/4 SW1/4 SE1/4 OF SAID SECTION 35 A DISTANCE OF 50.0 FEET TO THE SOUTHEAST CORNER OF THE SW1/4 SW1/4 SE1/4 OF SAID SECTION 35; THENCE WEST ALONG THE SOUTH LINE OF THE SW1/4 SW1/4 SE1/4 OF SAID SECTION 35 A DISTANCE OF 660.76 FEET TO THE POINT OF BEGINNING.



— Annexation Boundary  
 - - - - - Existing City Limits

### AREA OF ANNEXATION

Annexation Perimeter	2639.96 FT.
Contiguous Perimeter	659.60 FT.
Area in Square Feet	435586.71
Area in Acres	9.99

**ORDINANCE NUMBER**  
2610

**EFFECTIVE DATE**  
DECEMBER 6, 1992

The Description(s) contained herein have been derived from subdivision plats and deed description as they appear in the office of the Mesa County Clerk and Recorder. This plat does not constitute a legal survey, and is not intended to be used as a means for establishing or verifying property boundary lines.

*James L. Shanks*  
 JAMES L. SHANKS, DIRECTOR OF PUBLIC WORKS & UTILITIES

DESCRIPTION	DATE	DRAWN BY	DATE	SCALE
REVISION		McCUTCHEN	8/92	PLAN PROFILE
REVISION		CHECKED BY	T.W.	DATE
REVISION		APPROVED BY	J.L.S.	DATE
REVISION		FIELD BOOK NO.	PAGE	HORIZ. VERT.

DEPARTMENT OF PUBLIC WORKS AND UTILITIES  
 ENGINEERING DIVISION  
 CITY OF GRAND JUNCTION, COLORADO

NINA MAE ANNEXATION

SHEET NO.	1
OF	1
FILE NO.	NINAMAE.DWG