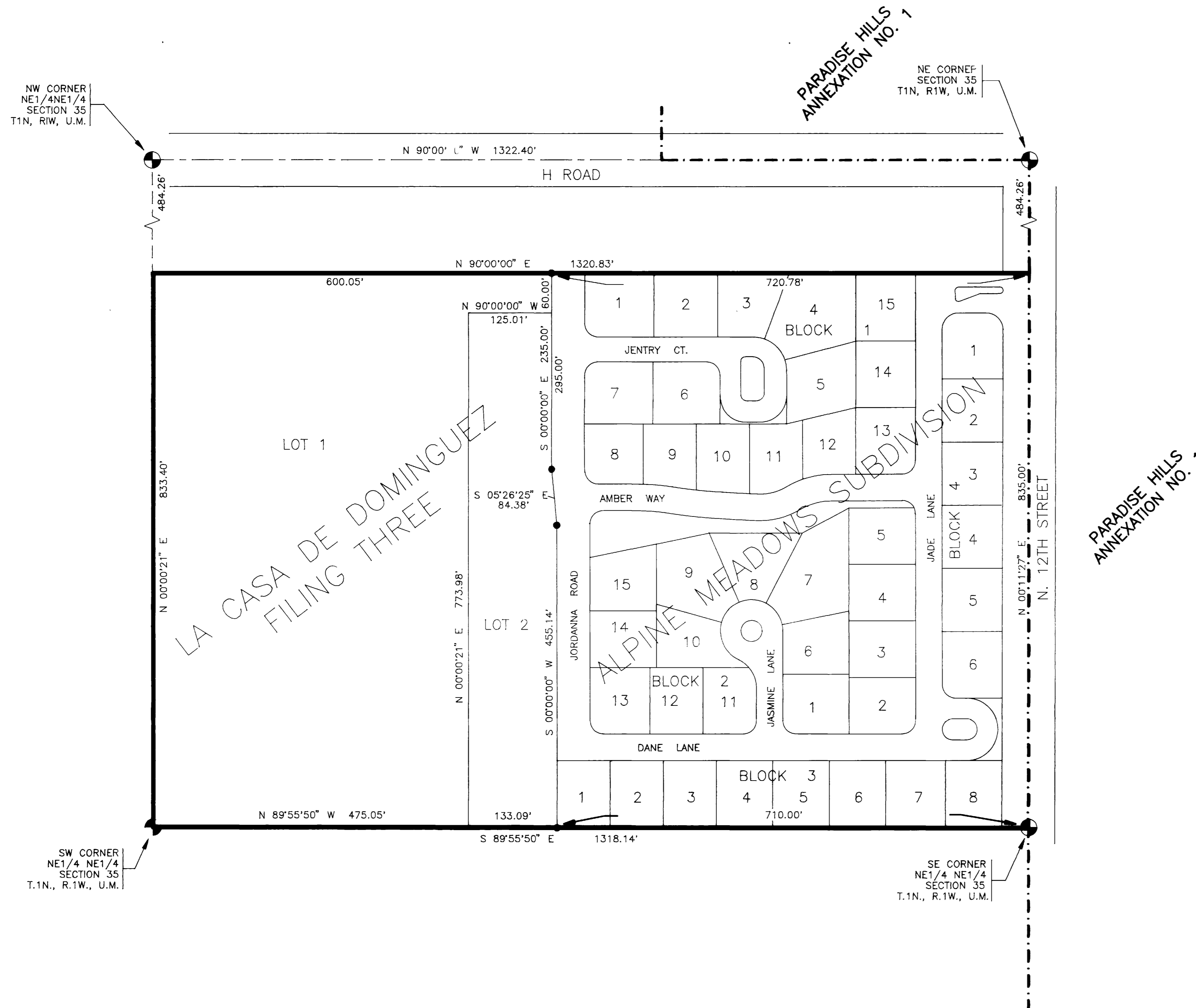


ALPINE MEADOWS ANNEXATION



DESCRIPTION

ALL OF ALPINE MEADOWS SUBDIVISION AS RECORDED IN PLAT BOOK 1847, PAGE 355 INCLUDING ADJOINING R.O.W. FOR 27 ROAD LYING WEST OF THE EAST SECTION LINE OF SECTION 35, T.1N., R.1W.

AND

ALL OF LA CASA DOMINGUEZ SUBDIVISION FILING #3 AS RECORDED IN PLAT BOOK 13, PAGE 393.

LEGEND

- Annexation Boundary
- - - - - Existing City Limits

AREA OF ANNEXATION

Annexation Perimeter	4307.38 FT.
Contiguous Perimeter	835.00 FT.
Area in Square Feet	1,100,714.07
Area in Acres	25.27

ORDINANCE NUMBER

2558

EFFECTIVE DATE

FEBRUARY 23, 1992

The Description(s) contained herein have been derived from subdivision plats and deed description as they appear in the office of the Mesa County Clerk and Recorder. This plat does not constitute a legal survey, and is not intended to be used as a means for establishing or verifying property boundary lines.

J. Don Newton
J. Don Newton, City Engineer

REVISION	DESCRIPTION	DATE	DRAWN BY	GURTON	DATE	10/91	SCALE
REVISION			CHECKED BY		DATE		PLAN
REVISION			APPROVED BY		DATE		PROFILE
REVISION			FIELD BOOK NO.		PAGE		HORIZ. 1"=100'
							VERT.

DEPARTMENT OF PUBLIC WORKS AND UTILITIES
ENGINEERING DIVISION
CITY OF GRAND JUNCTION, COLORADO

ALPINE MEADOWS ANNEXATION

SHEET NO.	1
OF	1
FILE NO.	ALPINE.DWG