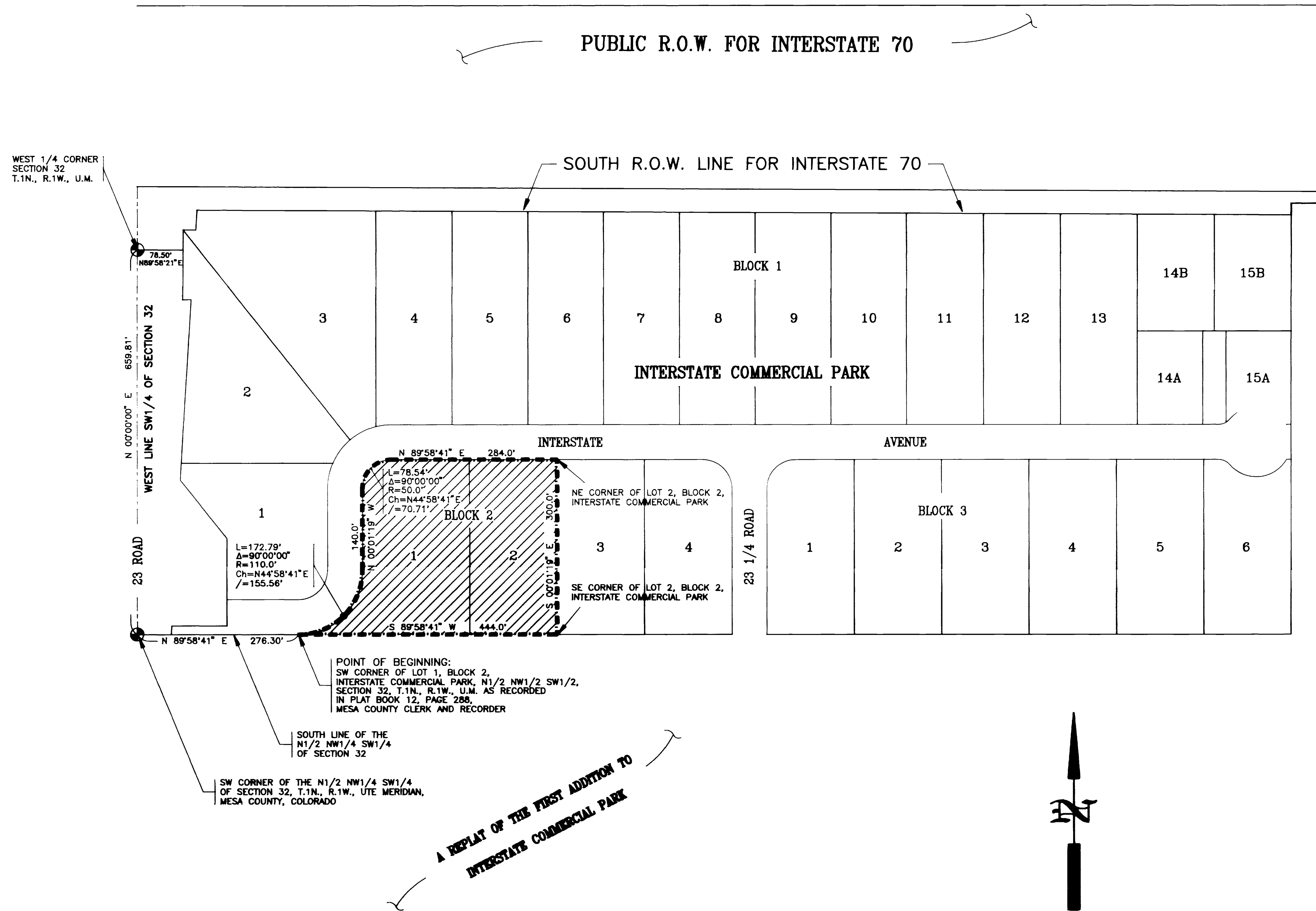


INTERSTATE ENCLAVE ANNEXATION

DESCRIPTION

A tract of land situated in the N1/2 NW1/4 SW1/4 of Section 32, Township 1 North, Range 1 West of the Ute Meridian, County of Mesa, State of Colorado, said tract of land consisting of Lots 1 and 2 of Block 2 of Interstate Commercial Park as recorded in Plat Book 12 at Page 288 in the office of the Mesa County Clerk and Recorder and being more particularly described as follows, to wit:

Commencing at the Southwest Corner of the N1/2 NW1/4 SW1/4 of said Section 32, thence N 89°58'41" E along the south line of said N1/2 NW1/4 SW1/4 a distance of 276.30 feet to the Southwest Corner of said Lot 1 and the Point of Beginning; thence 172.79 feet along the arc of a curve to the left having a central angle of 90°00'00", a radius of 110.0 feet, and a long chord which bears N 44°58'41" E a distance of 155.56 feet; thence N 00°01'19" W a distance of 140.0 feet; thence 78.54 feet along the arc of a curve to the right having a central angle of 90°00'00", a radius of 50.0 feet, and a long chord which bears N 44°58'41" E a distance of 70.71 feet; thence N 89°58'41" E a distance of 284.0 feet to the Northeast Corner of said Lot 2; thence S 00°01'19" E a distance of 300.0 feet to the Southeast corner of said Lot 2; thence S 89°58'41" W a distance of 444.0 feet to the Point of Beginning.



LEGEND



AREA OF ANNEXATION

AREA OF ANNEXATION

Annexation Perimeter	1,419.34 FT.
Contiguous Perimeter	1,419.34 FT.
Area in Square Feet	102,262.31
Area in Acres	2.35

ORDINANCE NUMBER

2684

EFFECTIVE DATE

JULY 17, 1993

The Legal Description(s) contained herein have been derived from subdivision plats and deed description as they appear in the office of the Mesa County Clerk and Recorder. This plat does not constitute a legal survey, and is not intended to be used as a means for establishing or verifying property boundary lines.

James L. Shanks
 JAMES L. SHANKS, DIRECTOR OF PUBLIC WORKS & UTILITIES

REVISION	DESCRIPTION	DATE	DRAWN BY	DATE	SCALE
REVISION			McCUTCHEN	4/14/93	
REVISION			T.W.	4/18/93	
REVISION			J.L.S.	6/15/93	
REVISION					

DEPARTMENT OF PUBLIC WORKS AND UTILITIES
 ENGINEERING DIVISION
 CITY OF GRAND JUNCTION, COLORADO

INTERSTATE ENCLAVE ANNEXATION
 SHEET NO. 1
 OF 1
 FILE NO. INSTENCL.DWG