



CAMBRIDGE ANNEXATION

DESCRIPTION

A tract of land situated in the E1/2 of Section 35, Township 1 North, Range 1 West of the Ute Meridian, Mesa County, Colorado, said tract being more particularly described as follows:

Beginning at the Southwest corner of Lot 2 in Block 1 of Cambridge, a Subdivision of the County of Mesa, State of Colorado, as recorded in Plat Book 13 at Pages 174, 175 and 176 in the office of the Mesa County Clerk and Recorder; thence N00°01'00"E along the West boundary of said Block 1 a distance of 681.15 feet to a point on the South Right-of-Way of Interstate Highway 70; thence along said South Right-of-Way of Interstate Highway 70 by the following two (2) courses and distances: (1) N87°52'55"E a distance of 259.09 feet; (2) S88°20'35"E a distance of 947.59 feet to the Northeast corner of Cambridge Subdivision; thence S00°11'10"W a distance of 1134.64 feet to the Southeast corner of Cambridge Subdivision; thence N89°40'06"W a distance of 542.80 feet to the Southwest corner of Block 4 of Cambridge Subdivision; thence N00°00'44"W a distance of 442.41 feet to the Northwest Corner of the NE1/4 SE1/4 of said Section 35; thence N89°56'03"W along the centerline of G-1/2 Road a distance of 659.74 feet; thence N00°01'00"E a distance of 25.0 feet to the Point of Beginning.

LEGEND

-  Annexation Boundary
-  Existing City Limits

AREA OF ANNEXATION

Annexation Perimeter	4,692.42 FT.
Contiguous Perimeter	1,808.29 FT.
Area in Square Feet	1,090,320.28
Area in Acres	25.03

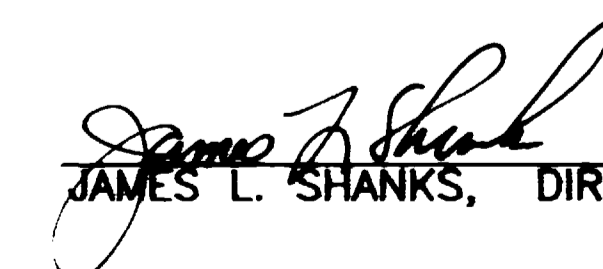
ORDINANCE NUMBER

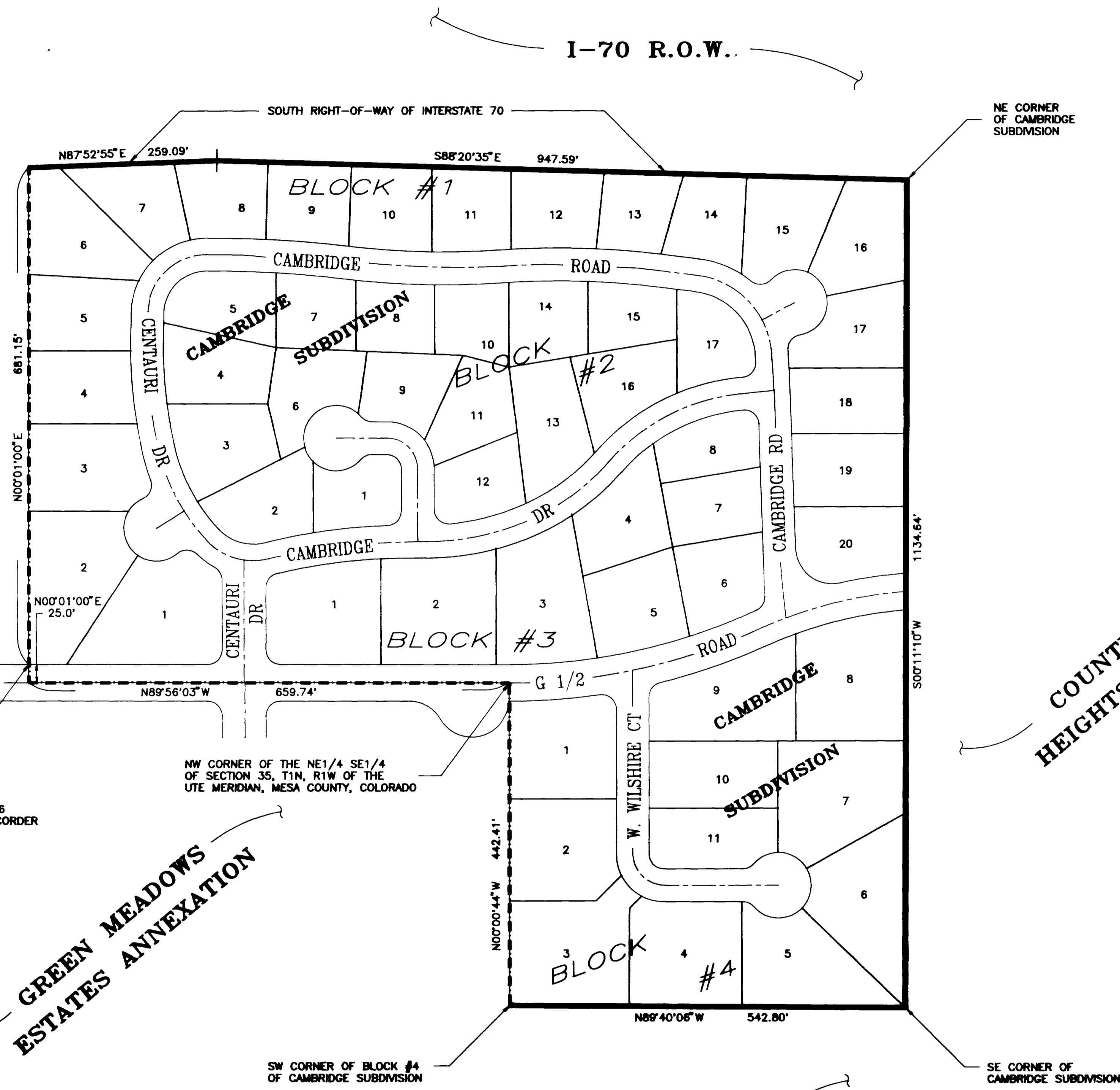
2687

EFFECTIVE DATE

JULY 17, 1993

The Description(s) contained herein have been derived from subdivision plats and deed descriptions as they appear in the office of the Mesa County Clerk and Recorder. This plat does not constitute a legal survey, and is not intended to be used as a means for establishing or verifying property boundary lines.


 JAMES L. SHANKS, DIRECTOR OF PUBLIC WORKS & UTILITIES



TERRA DEL VISTA ANNEXATION

COUNTRY CLUB HEIGHTS SUBDIVISION

GREEN MEADOWS ESTATES ANNEXATION

PEACH HILL SUBDIVISION

POINT OF BEGINNING:
 SW CORNER OF LOT 2, BLOCK 1,
 CAMBRIDGE SUBDIVISION, AS RECORDED
 IN PLAT BOOK 13, PAGES 174, 175 & 176
 MESA COUNTY, COLORADO, CLERK AND RECORDER

NW CORNER OF THE NE1/4 SE1/4
 OF SECTION 35, T1N, R1W OF THE
 UTE MERIDIAN, MESA COUNTY, COLORADO

SW CORNER OF BLOCK #4
 OF CAMBRIDGE SUBDIVISION

SE CORNER OF
 CAMBRIDGE SUBDIVISION

REVISION	DESCRIPTION	DATE	DRAWN BY	DATE	SCALE
			McCUTCHEN	3/3/93	
			T.W.	3/4/93	
			J.L.S.	6/15/93	

DEPARTMENT OF PUBLIC WORKS AND UTILITIES
 ENGINEERING DIVISION
 CITY OF GRAND JUNCTION, COLORADO

CAMBRIDGE ANNEXATION

SHEET NO. 1 OF 1
 FILE NO. CAMANEX.DWG