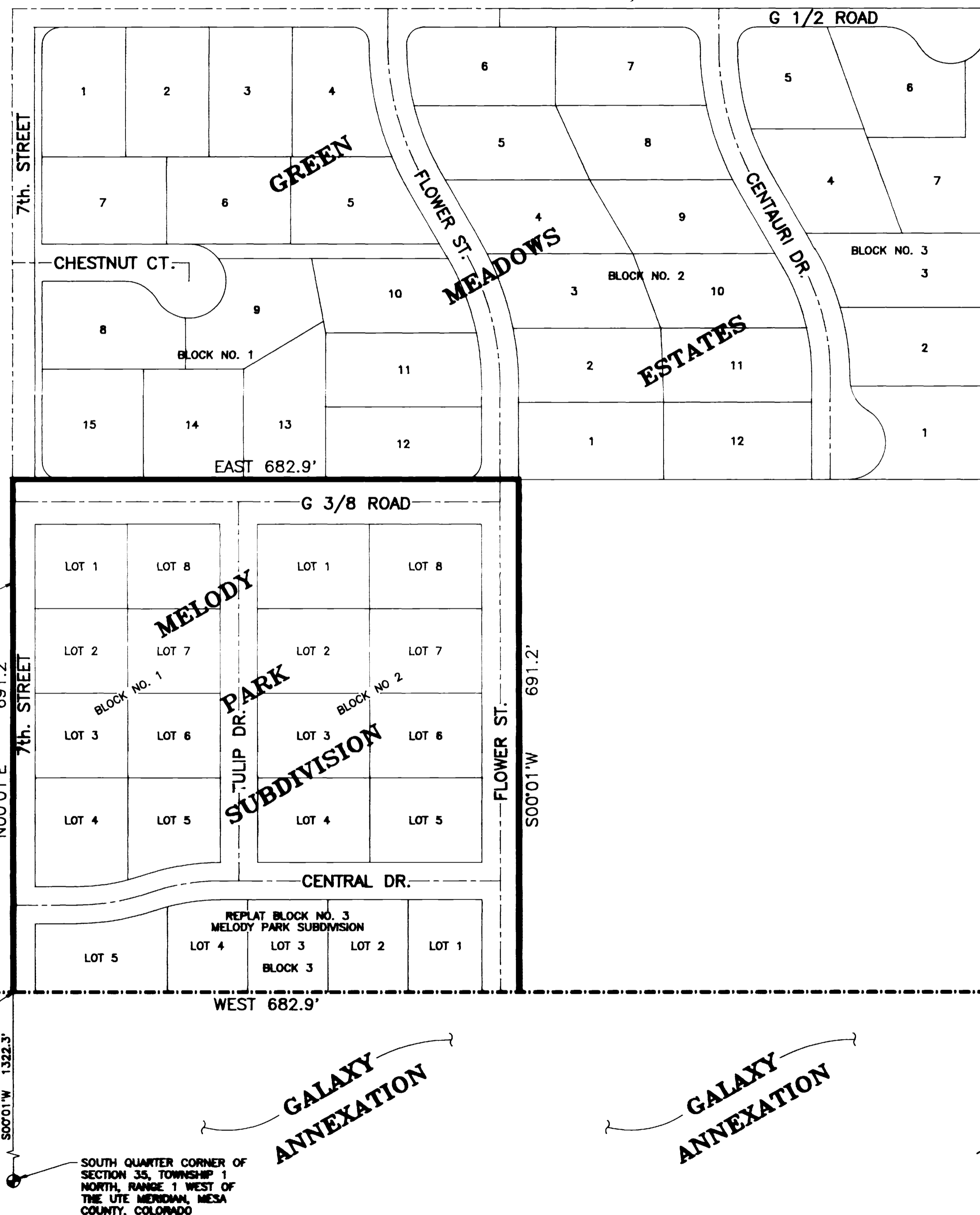


MELODY PARK ANNEXATION



DESCRIPTION

A TRACT OF LAND LYING IN THE SW1/4 NW1/4 SE1/4 OF SECTION 35, TOWNSHIP 1 NORTH, RANGE 1 WEST OF THE UTE MERIDIAN, MESA COUNTY, COLORADO, BEING MORE PARTICULARLY DESCRIBED AS FOLLOWS:

BEGINNING AT A POINT FROM WHENCE THE SOUTH QUARTER CORNER OF SAID SECTION 35 BEARS S00°01'W A DISTANCE OF 1322.3 FEET; THENCE N00°01'E ALONG THE WEST LINE OF SW1/4 NW1/4 SE1/4 OF SAID SECTION 35 A DISTANCE OF 691.2 FEET; THENCE EAST A DISTANCE OF 682.9 FEET; THENCE S00°01'W A DISTANCE OF 691.2 FEET; THENCE WEST A DISTANCE OF 682.9 FEET TO THE POINT OF BEGINNING.

LEGEND

- Annexation Boundary
- - - - - Existing City Limits

AREA OF ANNEXATION

Annexation Perimeter	2,748.20 FT.
Contiguous Perimeter	682.90 FT.
Area in Square Feet	472,020.46
Area in Acres	10.84

ORDINANCE NUMBER

2625

EFFECTIVE DATE

JANUARY 21, 1993

The Description(s) contained herein have been derived from subdivision plats and deed descriptions as they appear in the office of the Mesa County Clerk and Recorder. This plat does not constitute a legal survey, and is not intended to be used as a means for establishing or verifying property boundary lines.

James J. Shanks
 JAMES J. SHANKS DIRECTOR OF PUBLIC WORKS & UTILITIES

WEST LINE OF THE SW1/4 NW1/4 SE1/4 SECTION 35, TOWNSHIP 1 NORTH, RANGE 1 WEST, UTE MERIDIAN, MESA COUNTY, COLORADO

NORTHEAST CORNER OF GALAXY SUBDIVISION, SECTION 35, TOWNSHIP 1 NORTH, RANGE 1 WEST, UTE MERIDIAN, MESA COUNTY, COLORADO

POINT OF BEGINNING

SOUTH QUARTER CORNER OF SECTION 35, TOWNSHIP 1 NORTH, RANGE 1 WEST OF THE UTE MERIDIAN, MESA COUNTY, COLORADO

REVISION	DESCRIPTION	DATE

DRAWN BY	C.A.K.	DATE	10/12/92
CHECKED BY	T.A.B.	DATE	10/12/92
APPROVED BY	J.L.S.	DATE	10/12/92
FIELD BOOK NO.		PAGE	

SCALE	
PLAN	PROFILE
HORIZ. 1"=100'	HORIZ.
	VERT.

DEPARTMENT OF PUBLIC WORKS AND UTILITIES
 ENGINEERING DIVISION
 CITY OF GRAND JUNCTION, COLORADO

MELODY PARK ANNEXATION

CHEET NO.	1
OF	1
FILE NO.	MELOPARK.DWG