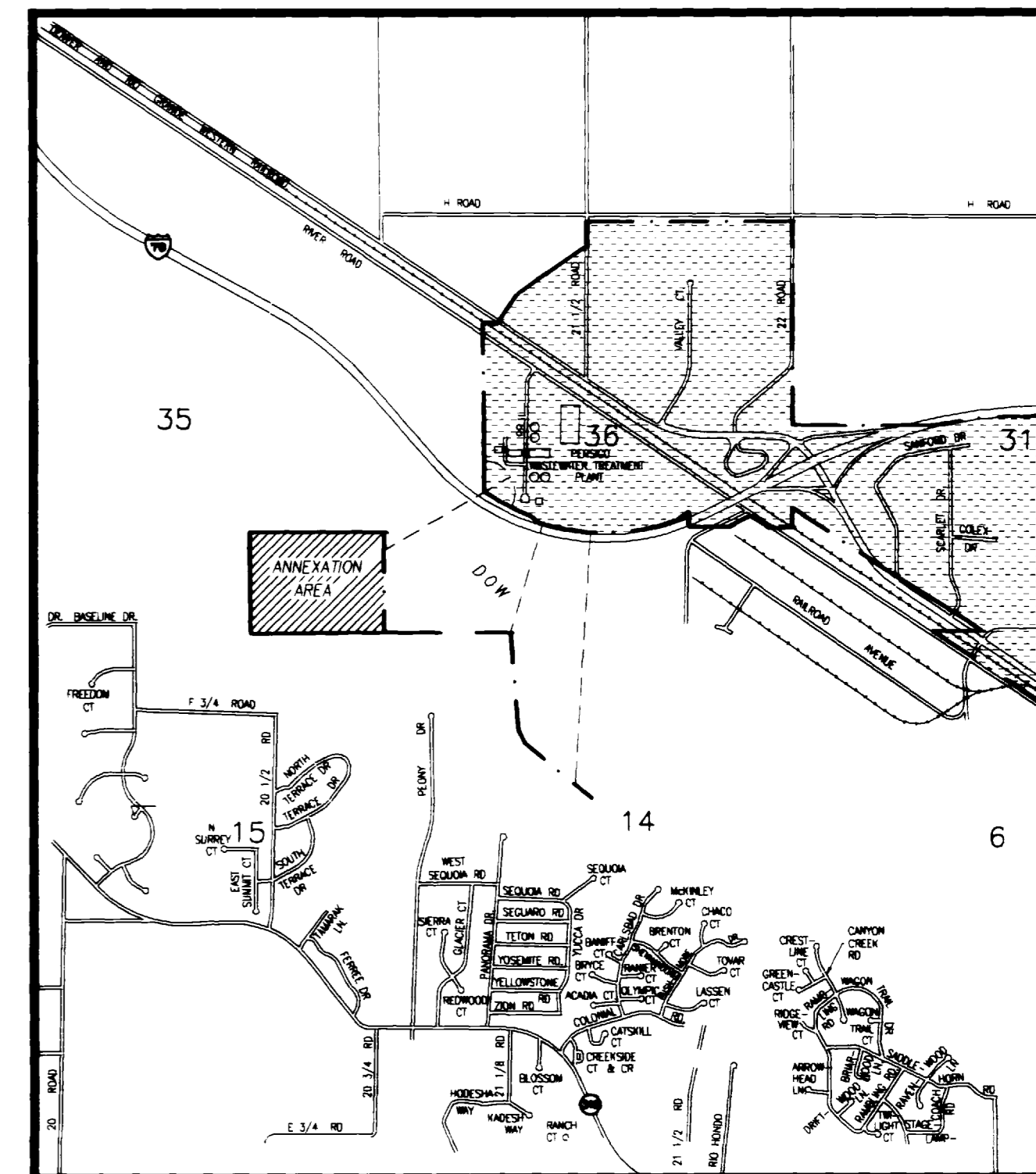


STASSEN ANNEXATION NO. 1

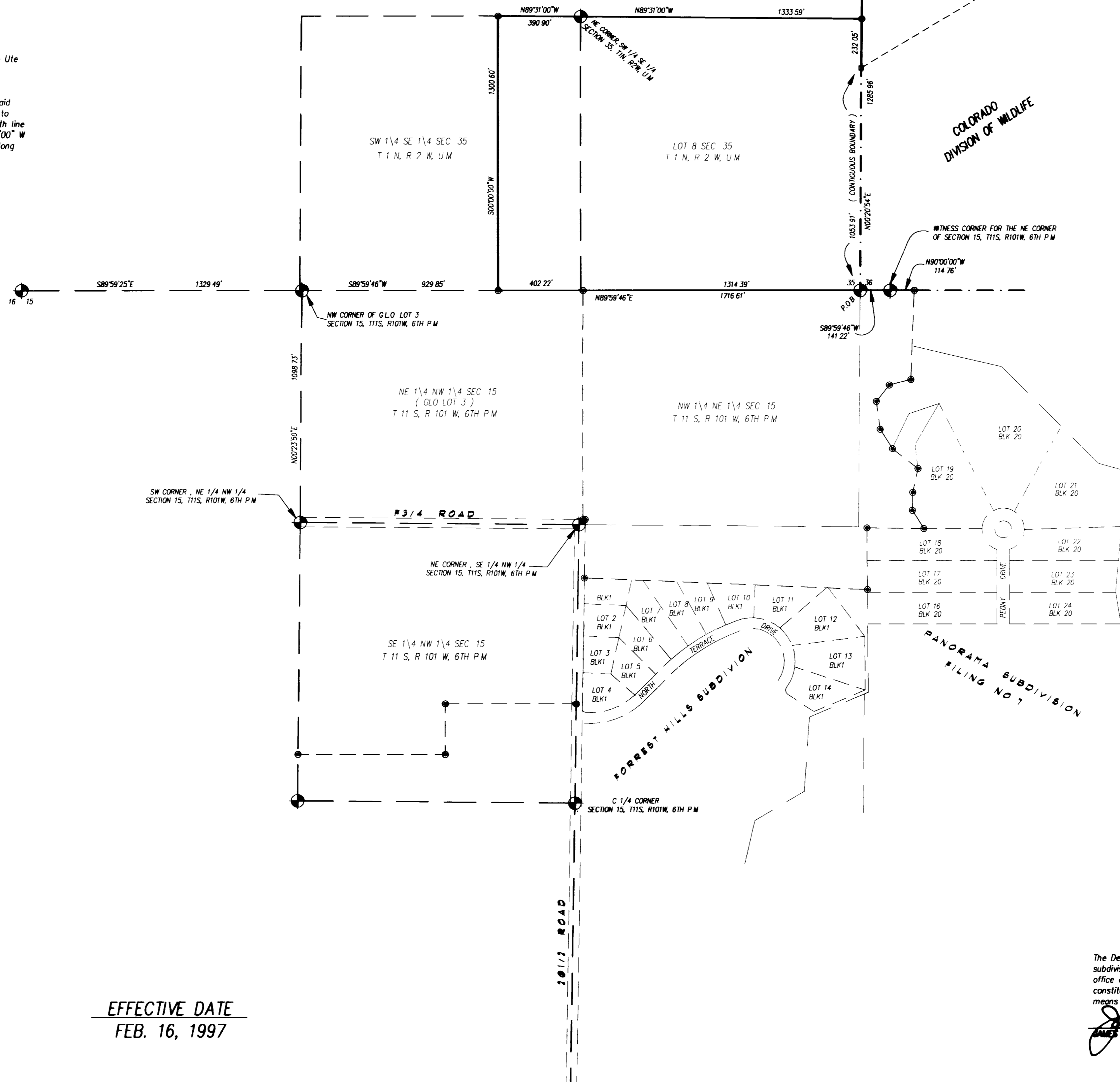
DESCRIPTION

A parcel of land situate in the Southeast 1/4 of Section 35, Township 1 North, Range 2 West of the Ute Meridian, County of Mesa, State of Colorado and being more particularly described as follows:

Beginning at the southeast corner of said Section 35, thence N 00°20'54" E along the east line of said Section 35 a distance of 1285.96 feet to a point; thence N 89°31'00" W a distance of 1333.59 feet to the northeast corner of the SW 1/4 SE 1/4 of said Section 35; thence N 89°31'00" W along the north line of said SW 1/4 SE 1/4 a distance of 390.90 feet to a point; thence leaving said north line S 00°00'00" W a distance of 1300.60 feet to a point on the south line of said Section 35; thence N 89°59'46" E along the south line of said Section 35 a distance of 1716.61 feet to the point of beginning



VICINITY MAP
NTS



AREA OF ANNEXATION

ANNEXATION PERIMETER	6,027.66 FT
CONTIGUOUS PERIMETER	1,053.91 FT
AREA IN SQUARE FEET	2,225,118.18
AREA IN ACRES	51.08

LEGEND

- EXISTING CITY LIMITS
- ANNEXATION BOUNDARY

ORDINANCE NO.
2976

EFFECTIVE DATE
FEB. 16, 1997

The Description(s) contained herein have been derived from subdivision plats and deed descriptions as they appear in the office of the Mesa County Clerk and Recorder. This plat does not constitute a legal survey, and is not intended to be used as a means for establishing or verifying property boundary lines.

James L. Shanks
JAMES L. SHANKS DIRECTOR OF PUBLIC WORKS & UTILITIES

REVISION	DESCRIPTION	DATE	DRAWN BY	SRP	DATE	10-16-96
REVISION ▲			CHECKED BY		DATE	
REVISION ▲			APPROVED BY		DATE	
REVISION ▲			FIELD BOOK NO.		PAGE	

SCALE
1" = 300'

DEPARTMENT OF PUBLIC WORKS AND UTILITIES
ENGINEERING DIVISION
CITY OF GRAND JUNCTION, COLORADO

STASSEN ANNEXATION NO. 1

SHEET NO.	1
OF	1
FILE NO.	STASSEN.DWG