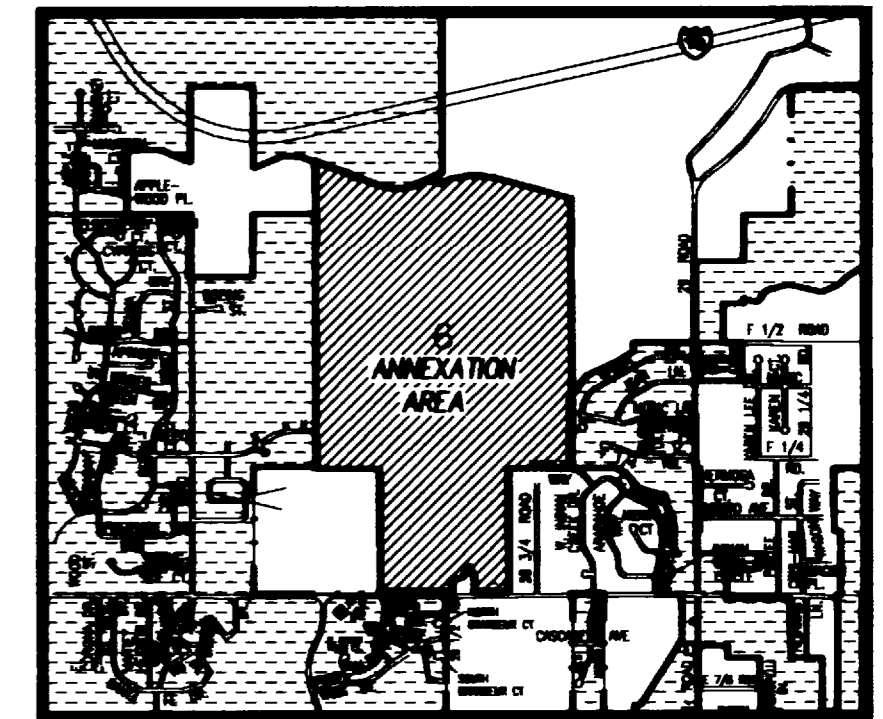


MATCHETT PARK ANNEXATION



VICINITY MAP

DESCRIPTION

A tract or parcel of land lying, being and situate in Section 6, Township 1 South, Range 1 East of the Ute Meridian, County of Mesa, State of Colorado, being more particularly described by the following metes and bounds, to wit:

Commencing at the South 1/4 Corner of Section 6, Township 1 South, Range 1 East of the Ute Meridian, County of Mesa, State of Colorado, and considering the South line of Southeast 1/4 of the Southwest 1/4 of said Section 6 to bear N 89°59'34" W with all bearings contained herein being relative thereto; thence N 00°37'34" W along the East line of the Southeast 1/4 of said Section 6 a distance of 5000 feet to a point on the North right-of-way line for F Road (also known as Patterson Road), as recorded in Book 1370 at Page 219 in the office of the Mesa County Clerk and Recorder, said point being the True Point of Beginning, thence N 89°59'34" W along the North right-of-way line for F Road a distance of 675.45 feet to a point on the West line of the East 1/2 of the Southeast 1/4 Southwest 1/4 of said Section 6, thence N 00°18'44" W along the West line of said East 1/2 Southeast 1/4 Southwest 1/4 a distance of 1271.63 feet to the Northwest Corner of said East 1/2 Southeast 1/4 Southwest 1/4, thence N 89°58'30" W along the North line of the West 1/2 of the Southeast 1/4 Southwest 1/4 of said Section 6 a distance of 668.32 feet to the Southwest 1/16 corner of said Section 6, thence N 00°00'43" E along the West line of the Northeast 1/4 Southwest 1/4 of Section 6 a distance of 1321.85 feet to the West 1/16th Corner of Section 6, thence N 00°01'41" E along the West line of the Southeast 1/4 of the Northwest 1/4 of Section 6 a distance of 1320.19 feet to the Northwest 1/16th Corner of Section 6, thence N 00°36'18" W along the West line of the Northeast 1/4 of the Northwest 1/4 of Section 6 a distance of 579.25 feet to the center line of the Government Highline Canal, thence along the center line of said Government Highline Canal the following three (3) courses and distances:

- 1 S 68°58'44" E a distance of 733.10 feet,
- 2 388.73 feet along the arc of a curve to the left having a radius of 523.55 feet, a central angle of 42°32'27", and a long chord bearing S 89°39'49" E a distance of 379.86 feet,
- 3 N 69°03'58" E a distance of 217.84 feet,

thence leaving the center line of said Government Highline Canal, S 22°35'08" E a distance of 67.50 feet to a point, thence N 67°24'52" E a distance of 40.88 feet to a point which is the intersection of the West line of the Northwest 1/4 of the Northeast 1/4 of Section 6 with the Southwest Corner of Tract 115 of the United States Department of Interior, Bureau of Reclamation, Government Highline Canal, thence along the South boundary line of said Tract 115 the following five (5) courses and distances:

- 1 N 67°24'52" E a distance of 113.43 feet,
- 2 150.51 feet along the arc of a curve to the right having a radius of 387.46 feet, a central angle of 22°15'27", and a long chord bearing N 78°32'36" E a distance of 149.57 feet,
- 3 N 89°40'20" E a distance of 142.26 feet,

- 4 129.13 feet along the arc of a curve to the right having a radius of 482.96 feet, a central angle of 15°19'09", and a long chord bearing S 82°40'05" E a distance of 128.75 feet,

5 S 75°00'32" E a distance of 842.80 feet to a point which is the intersection of the South boundary line of said Tract 115 with the East line of the Northwest 1/4 Northeast 1/4 of Section 6, thence S 00°37'02" W along the East line of the Northwest 1/4 Northeast 1/4 of Section 6 a distance of 190.20 feet to the Northeast 1/16th Corner of Section 6, thence S 00°35'44" E along the East line of the Southwest 1/4 Northeast 1/4 of Section 6 a distance of 1317.48 feet to the East 1/16th Corner of Section 6, thence S 00°01'16" E along the East line of the Northwest 1/4 Southeast 1/4 of Section 6 a distance of 1320.48 feet to the Southeast 1/16th Corner of Section 6, thence N 89°58'28" W along the South line of the Northwest 1/4 Southeast 1/4 of Section 6 a distance of 668.29 feet to the Northeast Corner of the West 1/2 of the Southwest 1/4 Southeast 1/4 of Section 6, thence S 00°16'28" E along the East line of the West 1/2 of the Southwest 1/4 Southeast 1/4 of Section 6 a distance of 1270.94 feet to a point on the North right-of-way line for F Road as described in Book 1410 at Page 316 in the office of the Mesa County Clerk and Recorder, thence S 89°59'21" W along the North right-of-way line for F Road a distance of 357.11 feet, thence leaving said right-of-way line, N 00°00'39" W a distance of 149.99 feet to a point, thence N 27°41'39" W a distance of 120.00 feet to a point, thence S 31°02'21" W a distance of 138.10 feet to a point, thence S 78°29'14" W a distance of 100.00 feet to a point, thence S 00°00'39" E a distance of 118.00 feet to a point, thence S 89°59'21" W a distance of 118.00 feet to a point on the North right-of-way line for F Road, thence S 89°59'21" W a distance of 78.64 feet to the True Point of Beginning.

AREA OF ANNEXATION

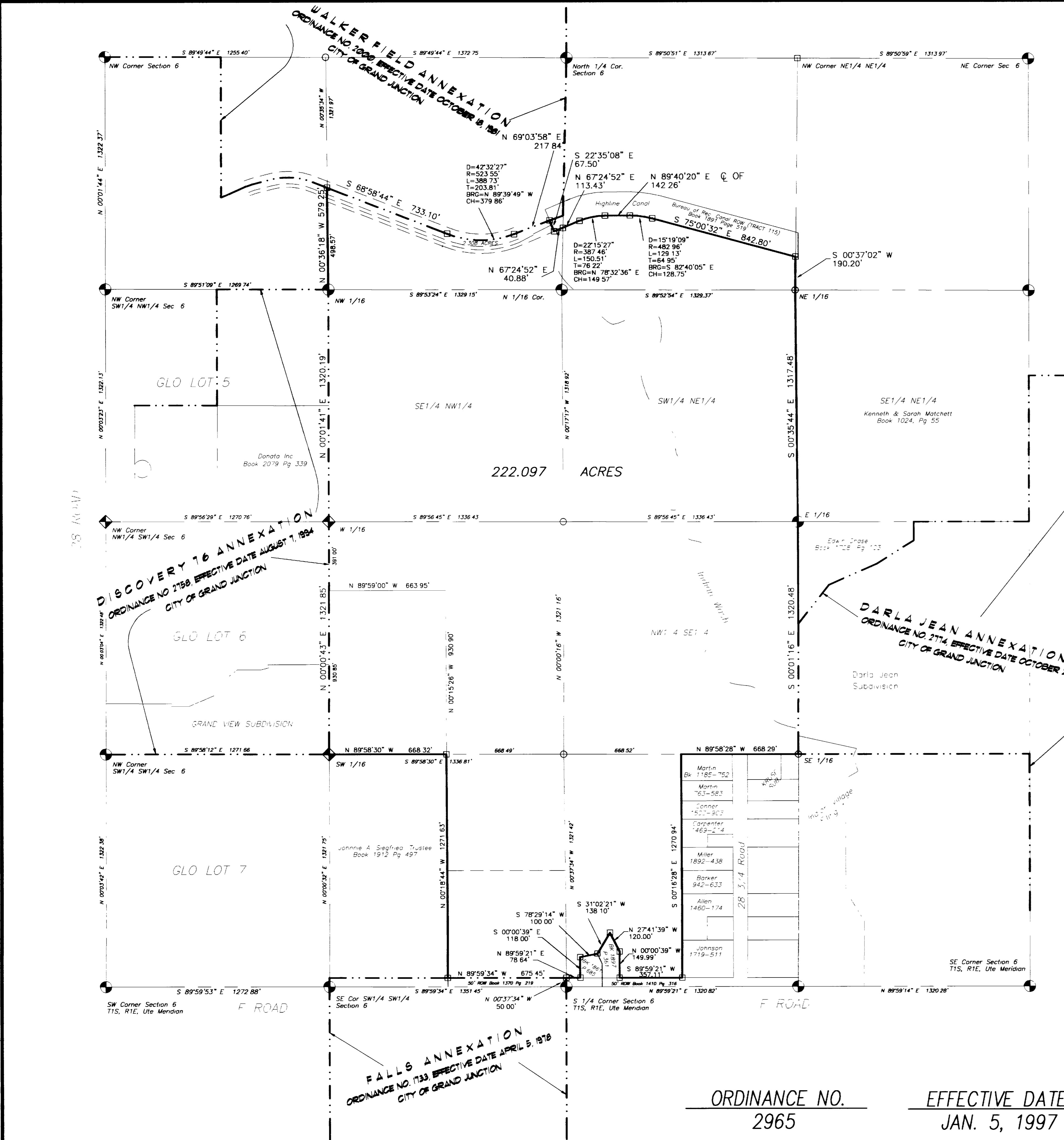
ANNEXATION PERIMETER	14,492.11 FT
CONTIGUOUS PERIMETER	5,397.70 FT
AREA IN SQUARE FEET	9,674,545.32
AREA IN ACRES	222.097

LEGEND

- ANNEXATION BOUNDARY
- - - - - CONTIGUOUS BOUNDARY (EXISTING CITY LIMITS)

The Description(s) contained herein have been derived from subdivision plats and deed descriptions as they appear in the office of the Mesa County Clerk and Recorder. This plat does not constitute a legal survey, and is not intended to be used as a means for establishing or verifying property boundary lines.

James L. Shanks
 JAMES L. SHANKS, DIRECTOR OF PUBLIC WORKS & UTILITIES



222.097 ACRES

ORDINANCE NO. 2965 EFFECTIVE DATE JAN. 5, 1997

REVISION	DESCRIPTION	DATE
REVISION		
REVISION		
REVISION		

DRAWN BY SRP	DATE 9-12-96
CHECKED BY JW	DATE 9-12-96
APPROVED BY JS	DATE 9-12-96
FIELD BOOK NO.	PAGE

SCALE
1" = 300'

DEPARTMENT OF PUBLIC WORKS AND UTILITIES
 ENGINEERING DIVISION
 CITY OF GRAND JUNCTION, COLORADO

MATCHETT PARK ANNEXATION

SHEET NO. 1
OF 1
FILE NO. MATCHETT DWG