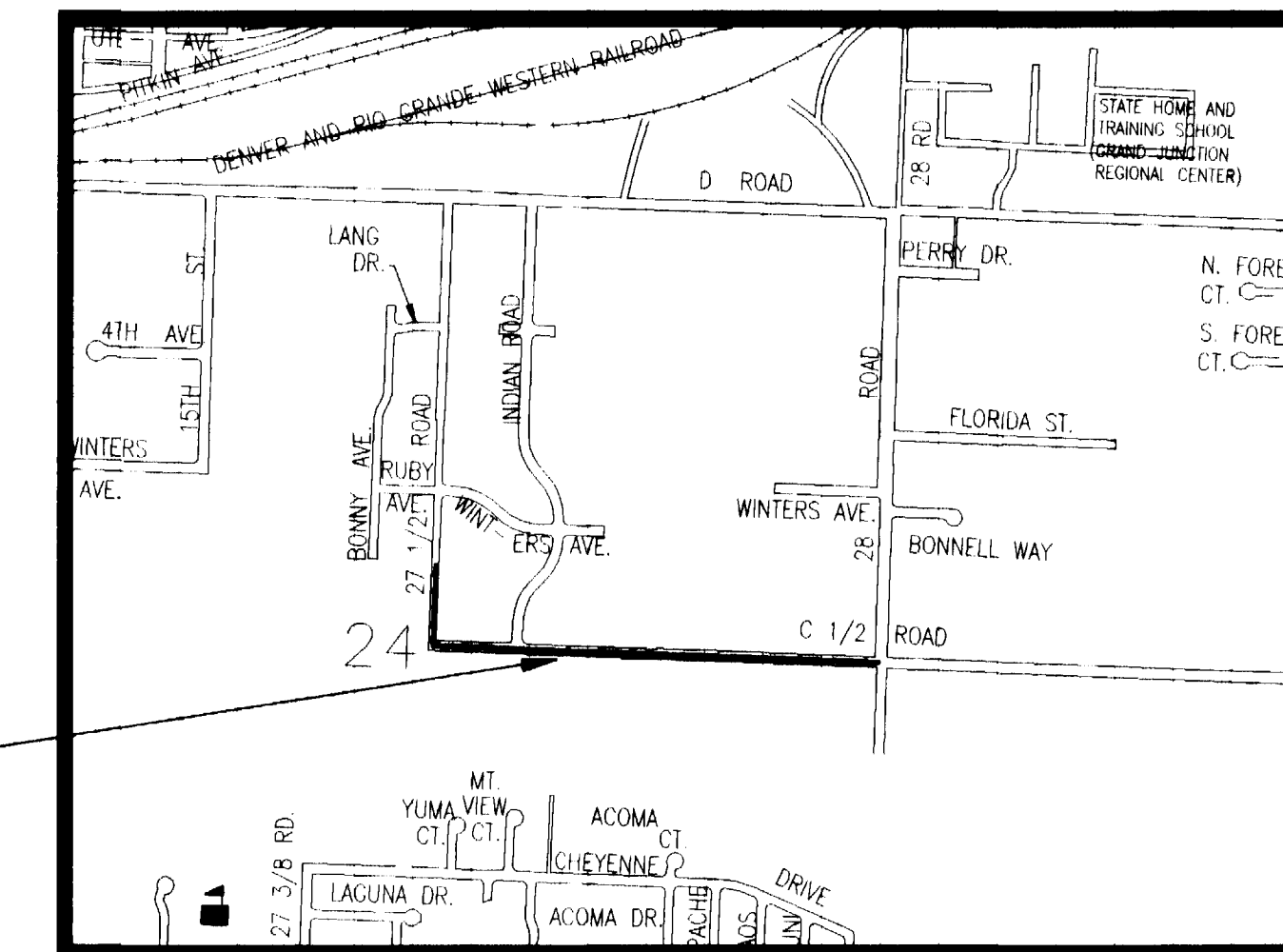


# ELITE TOWING ANNEXATION NO. 2

SITUATE IN THE NE 1/4, SECTION 24, T1S, R1W, U.M.  
COUNTY OF MESA, STATE OF COLORADO

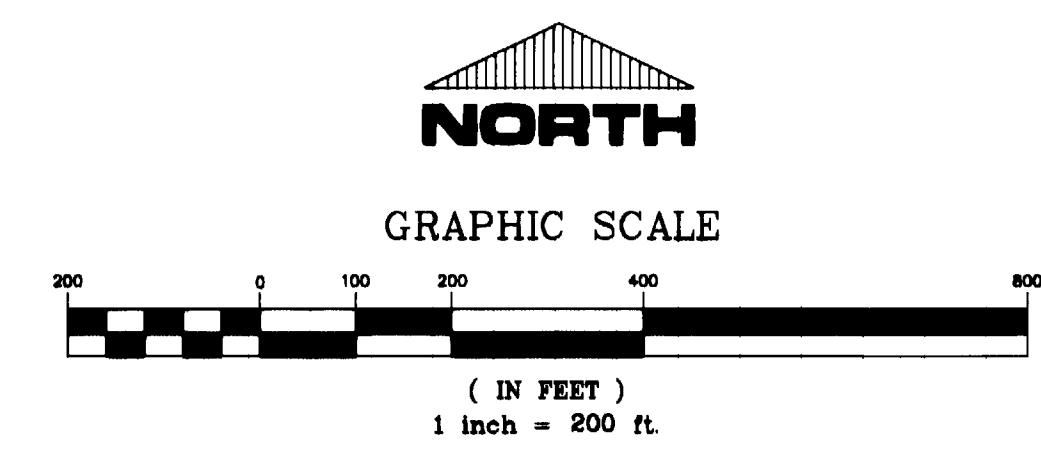


### LEGAL DESCRIPTION

A parcel of land situate in the SW 1/4 NE 1/4 and in the SE 1/4 NE 1/4 of Section 24, Township 1 South, Range 1 West of the Ute Meridian, County of Mesa, State of Colorado, being more particularly described as follows:

Commencing at the C 1/4 corner of said Section 24; thence N 00°00'00" W along the west line of the SW 1/4 NE 1/4 of said Section 24 a distance of 495.14 feet to a point; thence leaving said west line N 90°00'00" E a distance of 2.00 feet to the True Point of Beginning of the parcel described herein; thence S 00°00'00" E along a line 2.00' east of and parallel with the west line of said SW 1/4 NE 1/4 a distance of 492.14 feet to a point; thence S 89°54'02" E along a line 3.00 feet north of and parallel with the south line of the SW 1/4 NE 1/4 of said Section 24 a distance of 1317.62 feet to a point; thence S 89°53'49" E along a line 3.00 feet north of and parallel with the south line of the SE 1/4 NE 1/4 of said Section 24 a distance of 1288.58 feet to a point; thence S 00°21'23" E a distance of 1.00 feet to a point; thence N 89°53'49" W along a line 2.00 feet north of and parallel with the south line of said SE 1/4 NE 1/4 a distance of 1288.59 feet to a point; thence N 89°54'02" W along a line 2.00 feet north of and parallel with the south line of the SW 1/4 NE 1/4 of said Section 24 a distance of 368.61 feet to a point; thence continuing along said line N 89°54'02" W a distance of 950.00 feet to a point; thence N 00°00'00" W along a line 1.00 feet east of and parallel with the west line of the SW 1/4 NE 1/4 of said Section 24 a distance of 493.14 feet to a point; thence N 90°00'00" E a distance of 1.00 feet to the point of beginning, containing .071 acres more or less.

NE 1/4 SEC. 24



### AREA OF ANNEXATION

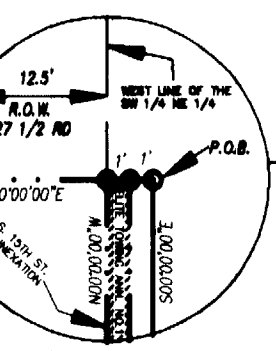
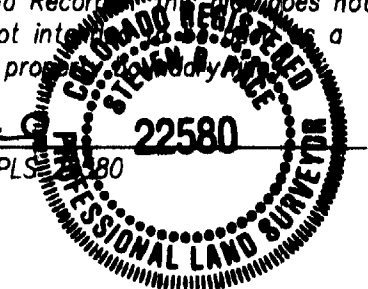
ANNEXATION PERIMETER	6200.88 FT.
CONTIGUOUS PERIMETER	1444.14 FT.
AREA IN SQUARE FEET	3096.19
AREA IN ACRES	0.071

### LEGEND

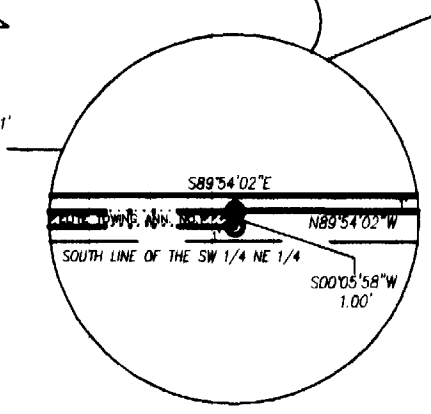
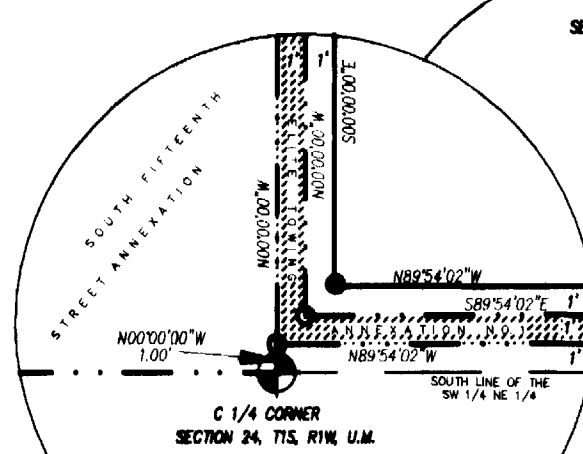
- ANNEXATION BOUNDARY ————
- EXISTING CITY LIMITS - - - - -

The Description(s) contained herein have been derived from subdivision plats and deed descriptions as they appear in the office of the Mesa County Clerk and Recorder. This map does not constitute a legal survey, and is not intended to be used as a means for establishing or verifying property boundaries.

*Stu R. Pugh*  
SENIOR REAL ESTATE TECHNICIAN, P.L.S. 22580



**SOUTH FIFTEENTH STREET ANNEXATION**  
ORDINANCE NO. 2812  
EFFECTIVE DATE 12-7-86



**ORDINANCE NO. 3102**  
**EFFECTIVE DATE APRIL 4, 1999**

DRAWN BY SRP DATE 1-13-99  
DESIGNED BY DATE  
CHECKED BY DATE  
APPROVED BY DATE

SCALE  
1" = 200'

DEPARTMENT OF PUBLIC WORKS AND UTILITIES  
ENGINEERING AND TECHNICAL SERVICES DIVISIONS  
CITY OF GRAND JUNCTION, COLORADO

ELITE TOWING ANNEXATION NO. 2