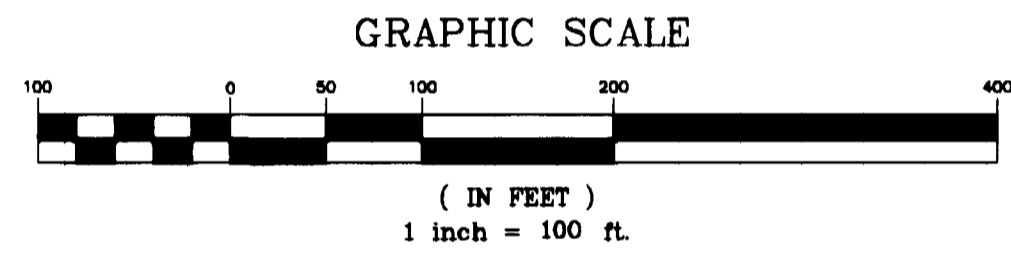
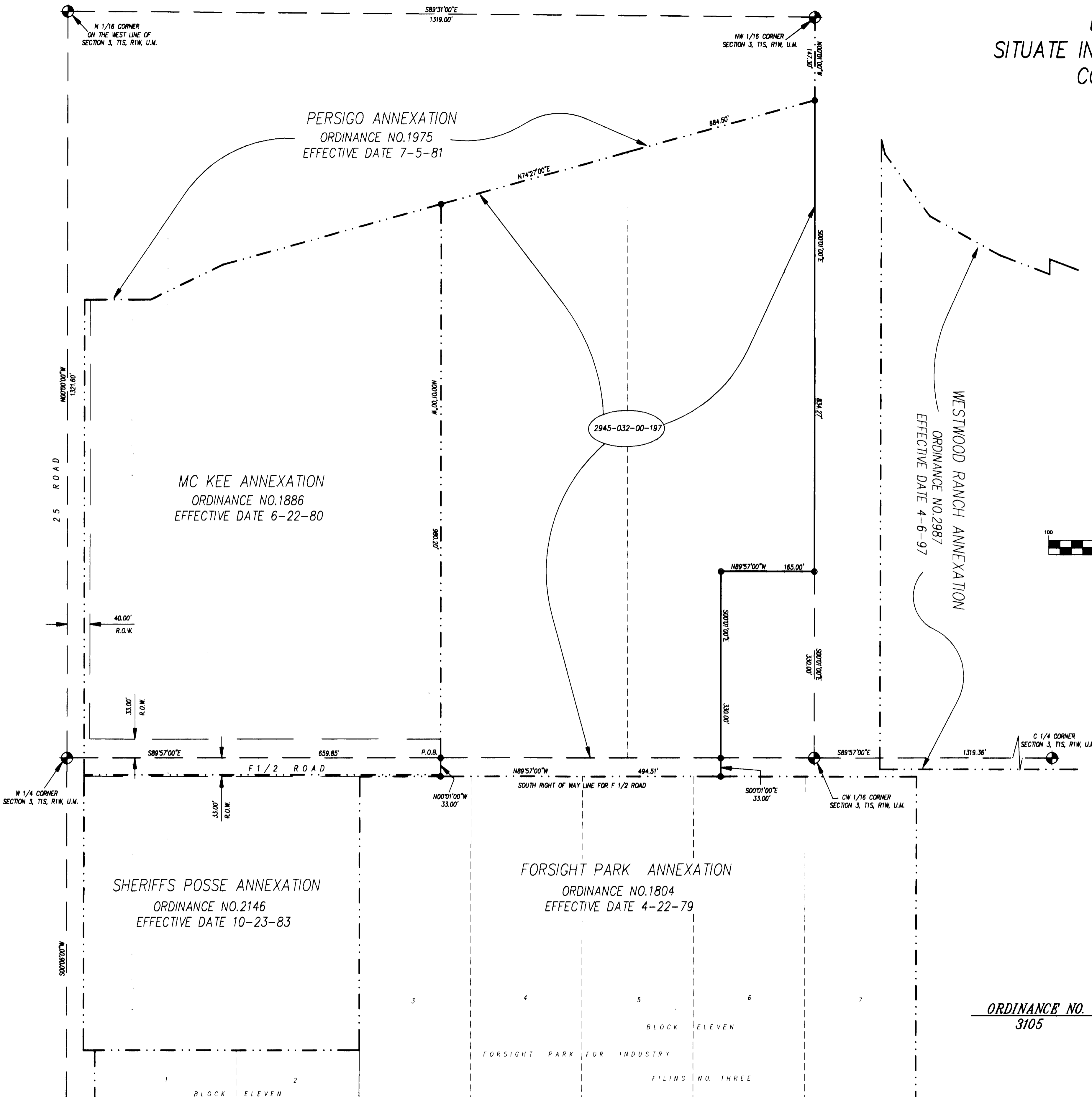
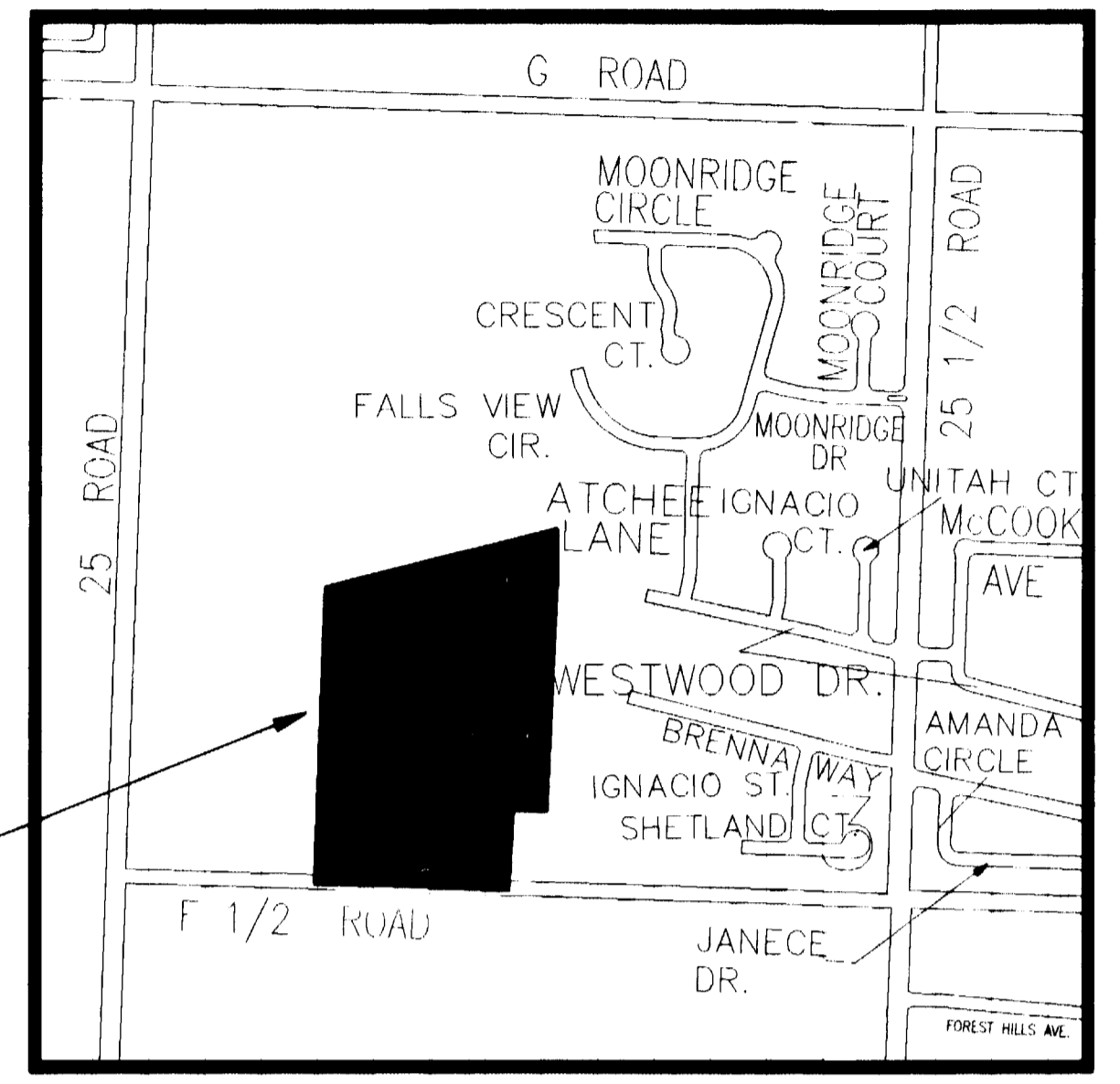


DIAMOND RIDGE ANNEXATION

SITUATE IN THE SW 1/4 NW 1/4, SECTION 3, T1S, R1W, U.M.
COUNTY OF MESA, STATE OF COLORADO



LEGAL DESCRIPTION

A parcel of land situate in the SW 1/4 NW 1/4 of Section 3, Township 1 South, Range 1 West of the Ute Meridian, County of Mesa, State of Colorado, being more particularly described as follows:

Commencing at the W 1/4 corner of said Section 3; thence S 89°57'00" E along the south line of the SW 1/4 NW 1/4 of said Section 3 a distance of 659.85 feet to the True Point of Beginning of the parcel described herein; thence N 00°01'00" W a distance of 980.20 feet to a point; thence N 74°27'00" E a distance of 684.50 feet to a point on the east line of said SW 1/4 NW 1/4 (whence the NW 1/16 corner of said Section 3 bears N 00°01'00" W a distance of 147.30 feet); thence S 00°01'00" E along the east line of said SW 1/4 NW 1/4 a distance of 834.27 feet to a point; thence leaving said east line N 89°57'00" W a distance of 165.00 feet to a point; thence S 00°01'00" E a distance of 330.00 feet to a point on the south line of said SW 1/4 NW 1/4; thence S 00°01'00" E a distance of 33.00 feet to a point on the south right of way line for F 1/2 Road; thence N 89°57'00" W along said south right of way line a distance of 494.51 feet to a point; thence leaving said south right of way line N 00°01'00" W a distance of 33.00 feet to the point of beginning, containing 15.36 acres more or less.

AREA OF ANNEXATION

ANNEXATION PERIMETER	3554.49 FT.
CONTIGUOUS PERIMETER	2182.21 FT.
AREA IN SQUARE FEET	668004.35
AREA IN ACRES	15.36

LEGEND

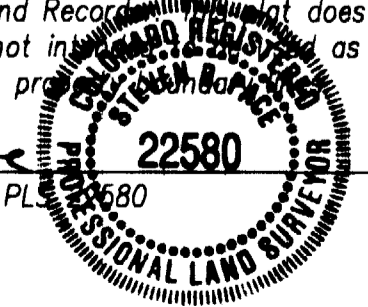
ANNEXATION BOUNDARY ————
EXISTING CITY LIMITS - - - - -

ORDINANCE NO.
3105

EFFECTIVE DATE
APRIL 4, 1999

The Description(s) contained herein have been derived from subdivision plats and deed descriptions as they appear in the office of the Mesa County Clerk and Recorder. This plat does not constitute a legal survey, and is not intended to be used as a means for establishing or verifying property boundaries.

John R. Paces
SENIOR REAL ESTATE TECHNICIAN, PLS 22580



Notice:
According to Colorado law you have 90 days from the effective date shown hereon to file a complaint based upon any defect on this plat. If no complaint is filed within said 90 days then said plat stands despite all defects and or errors.

DRAWN BY SRP DATE 1-27-99
DESIGNED BY _____ DATE _____
CHECKED BY _____ DATE _____
APPROVED BY _____ DATE _____

SCALE
1" = 100'

DEPARTMENT OF PUBLIC WORKS AND UTILITIES
ENGINEERING AND TECHNICAL SERVICES DIVISIONS
CITY OF GRAND JUNCTION, COLORADO

DIAMOND RIDGE ANNEXATION