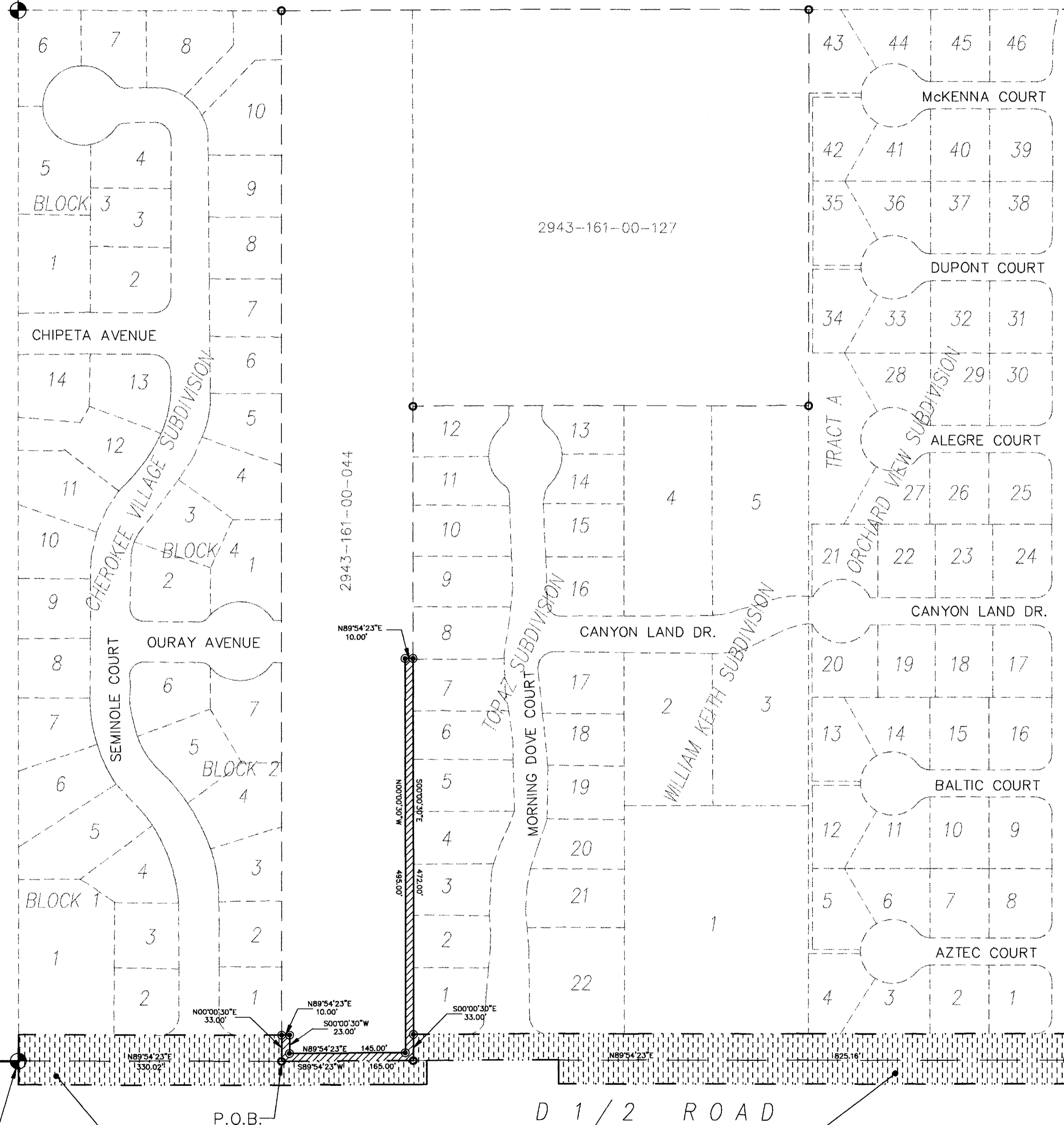
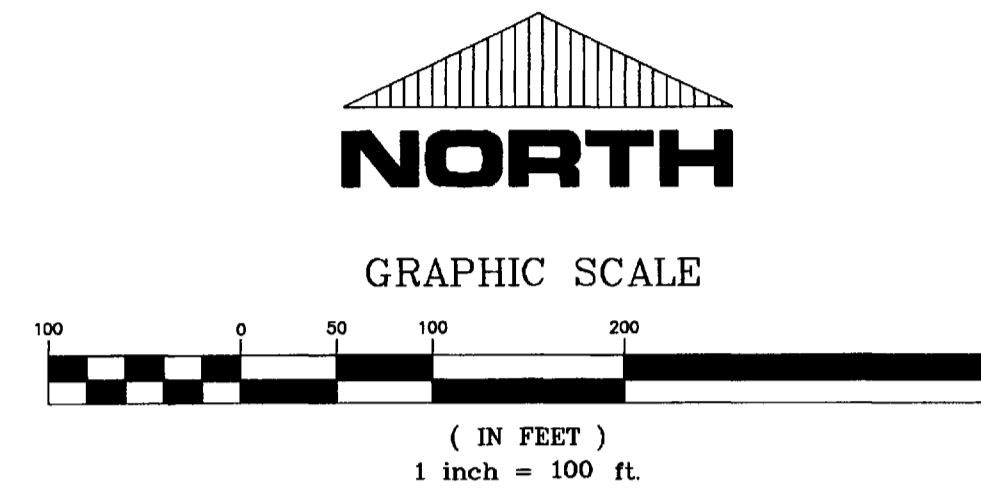
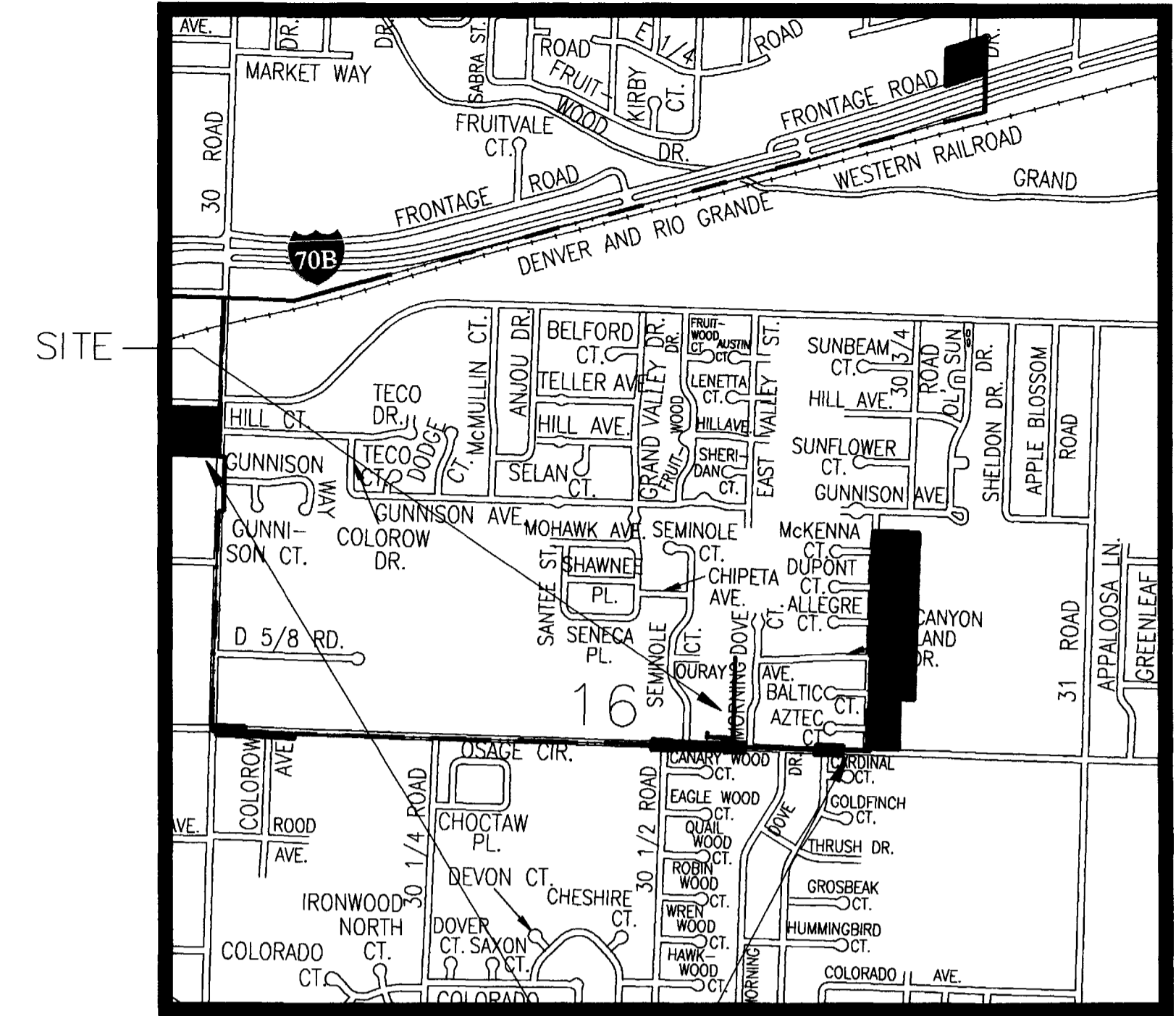


CIMMARRON EAST ANNEXATION NO. 1
 SITUATE IN THE SW 1/4 NE 1/4 OF SECTION 16, T1S, R1E, U.M.
 COUNTY OF MESA, STATE OF COLORADO

NW CORNER, SW 1/4 NE 1/4
 SECTION 16, T1S, R1E, U.M.

NE CORNER, SW 1/4 NE 1/4
 SECTION 16, T1S, R1E, U.M.



2943-161-00-127

2943-161-00-044

M.C. CALOON
 3/16/99

LEGAL DESCRIPTION

A parcel of land situate in the SW 1/4 NE 1/4 of Section 16, Township 1 South, Range 1 East of the Ute Meridian, County of Mesa, State of Colorado, being more particularly described as follows:

Commencing at the C 1/4 corner of said Section 16; thence N 89°54'23" E along the south line of the SW 1/4 NE 1/4 of said Section 16 a distance of 330.02 feet to the True Point of Beginning of the parcel described herein; thence leaving the south line of said SW 1/4 NE 1/4 N 00°00'30" E a distance of 33.00 feet to the southeast corner of Cherokee Village Subdivision as found recorded in Plat Book 12 at Page 362 of the records of the Mesa County Clerk and Recorder; thence N 89°54'23" E a distance of 10.00 feet to a point; thence S 00°00'30" W a distance of 23.00 feet to a point; thence N 89°54'23" E along a line 10.00 feet north and parallel with the south line of said SW 1/4 NE 1/4 a distance of 145.00 feet to a point; thence N 00°00'30" W a distance of 495.00 feet to a point; thence N 89°54'23" E a distance of 10.00 feet to a point on the west boundary line of Topaz Subdivision as found recorded in Plat Book 13 at Page 131 of the records of said Mesa County Clerk and Recorder; thence S 00°00'30" E along the west boundary line of said Topaz Subdivision a distance of 472.00 feet to the southwest corner of said Topaz Subdivision; thence S 00°00'30" E a distance of 33.00 feet to a point on the south line of the SW 1/4 NE 1/4 of said Section 16; thence S 89°54'23" W along the south line of said SW 1/4 NE 1/4 a distance of 165.00 feet to the point of beginning, containing .16 acres more or less.

LEGEND

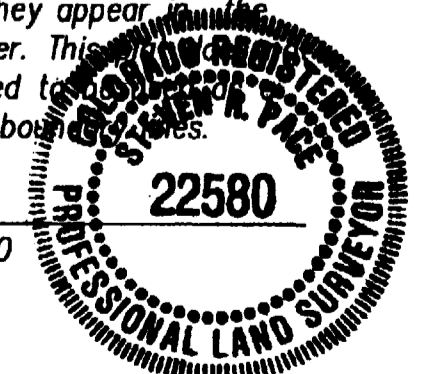
ANNEXATION BOUNDARY ————
 EXISTING CITY LIMITS — · — · —

AREA OF ANNEXATION

ANNEXATION PERIMETER	1386.00 FT.
CONTIGUOUS PERIMETER	231.00 FT.
AREA IN SQUARE FEET	6830.00
AREA IN ACRES	.16

The Description(s) contained herein have been derived from subdivision plats and deed descriptions as they appear in the office of the Mesa County Clerk and Recorder. This does not constitute a legal survey, and is not intended to be used as a means for establishing or verifying property boundaries.

Star R. Poca
 SENIOR REAL ESTATE TECHNICIAN, PLS 22580



C 1/4 CORNER
 SECTION 16, T1S, R1E, U.M.

FRUITVALE MEADOWS ANNEXATION NO. 2

SE CORNER, SW 1/4 NE 1/4
 SECTION 16, T1S, R1E, U.M.

ORDINANCE NO.
 3153

EFFECTIVE DATE
 7-19-99

Notice:
 According to Colorado law you have 60 days from the effective date shown hereon to file a complaint based upon any defect on this plat. If no complaint is filed within said 60 days then said plat stands despite all defects and or errors.

DRAWN BY SRP	DATE 4-28-99	SCALE
DESIGNED BY	DATE	1" = 100'
CHECKED BY	DATE	
APPROVED BY	DATE	

**DEPARTMENT OF PUBLIC WORKS AND UTILITIES
 ENGINEERING AND TECHNICAL SERVICES DIVISIONS
 CITY OF GRAND JUNCTION, COLORADO**

CIMMARRON EAST ANNEXATION NO. 1