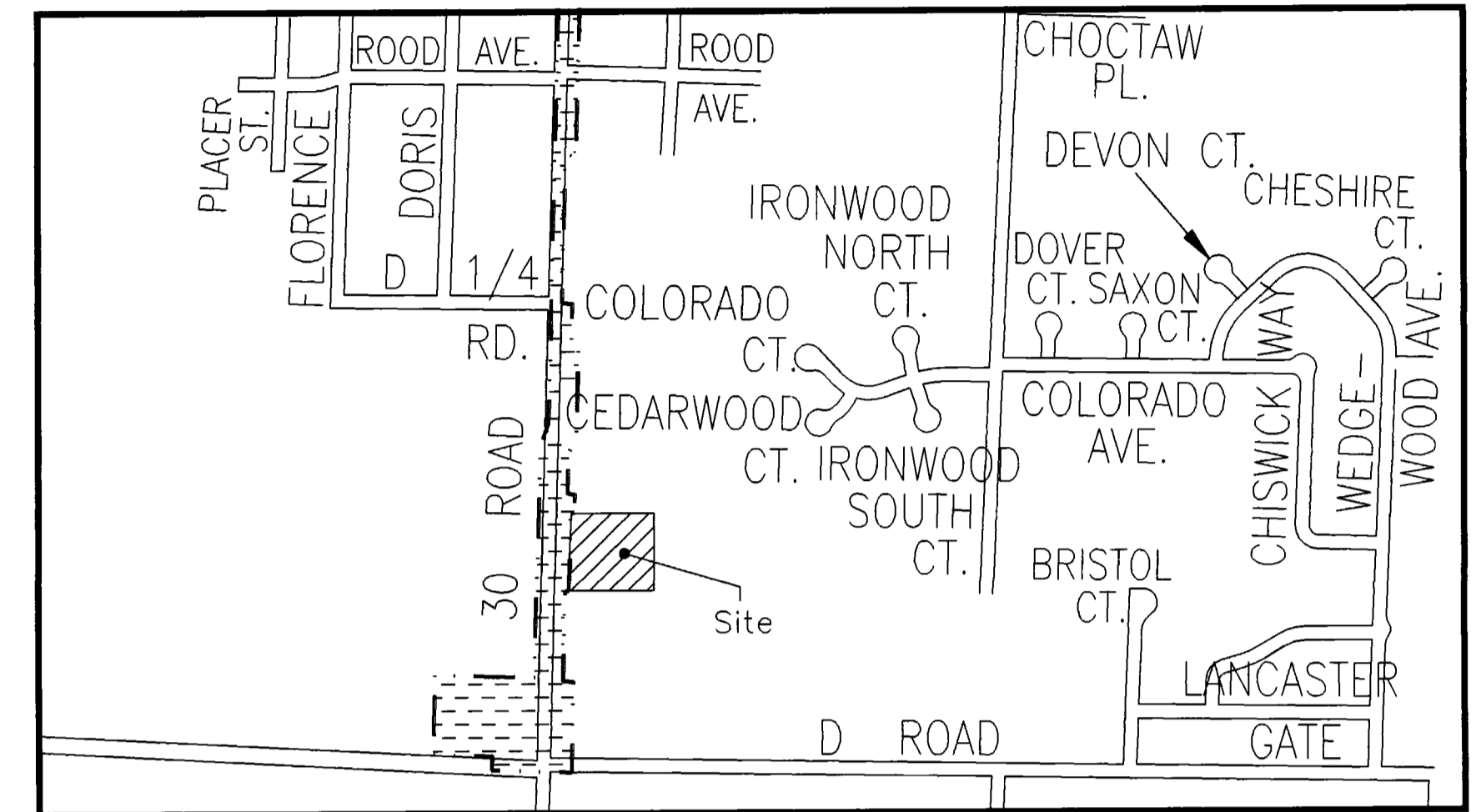


# SHARP ANNEXATION

SITUATE IN THE SW 1/4 SW 1/4, SECTION 16  
T 1 S, R 1 E, U.M.  
COUNTY OF MESA, STATE OF COLORADO



### LEGAL DESCRIPTION

A parcel of land situate in the SW 1/4 SW 1/4 of Section 16, Township 1 South, Range 1 East of the Ute Meridian, County of Mesa, State of Colorado, being more particularly described as follows:

Commencing at the southwest corner of Section 16; thence N 00°01'05" E along the west line of the SW 1/4 SW 1/4 of said Section 16 a distance of 508.00 feet to a point; thence S 89°58'55" E a distance of 40.00 feet to the True Point of Beginning of the parcel contained herein; thence N 00°01'05" E along the east right of way line for 30 Road a distance of 224.00 feet to a point; thence S 89°58'55" E a distance of 246.00 feet to a point; thence S 00°01'05" W a distance of 224.00 feet to a point; thence N 89°58'55" W a distance of 246.00 feet to the point of beginning, containing 1.26 acres more or less.

### AREA OF ANNEXATION

ANNEXATION PERIMETER	940.00 FT.
CONTIGUOUS PERIMETER	224.00 FT.
AREA IN SQUARE FEET	55104.00
AREA IN ACRES	1.26

### LEGEND

ANNEXATION BOUNDARY	
EXISTING CITY LIMITS	

### ORDINANCE NO.

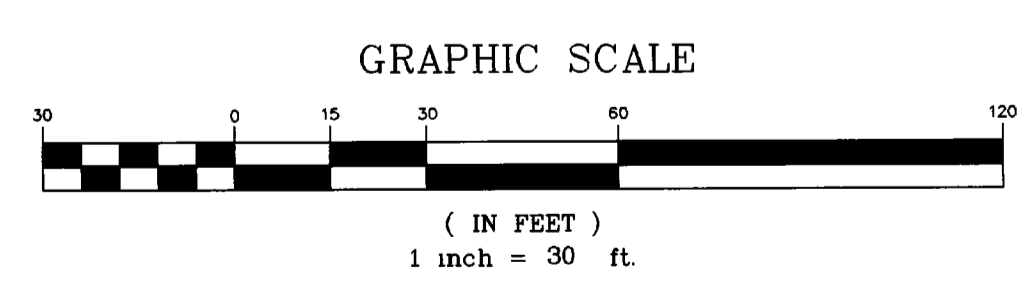
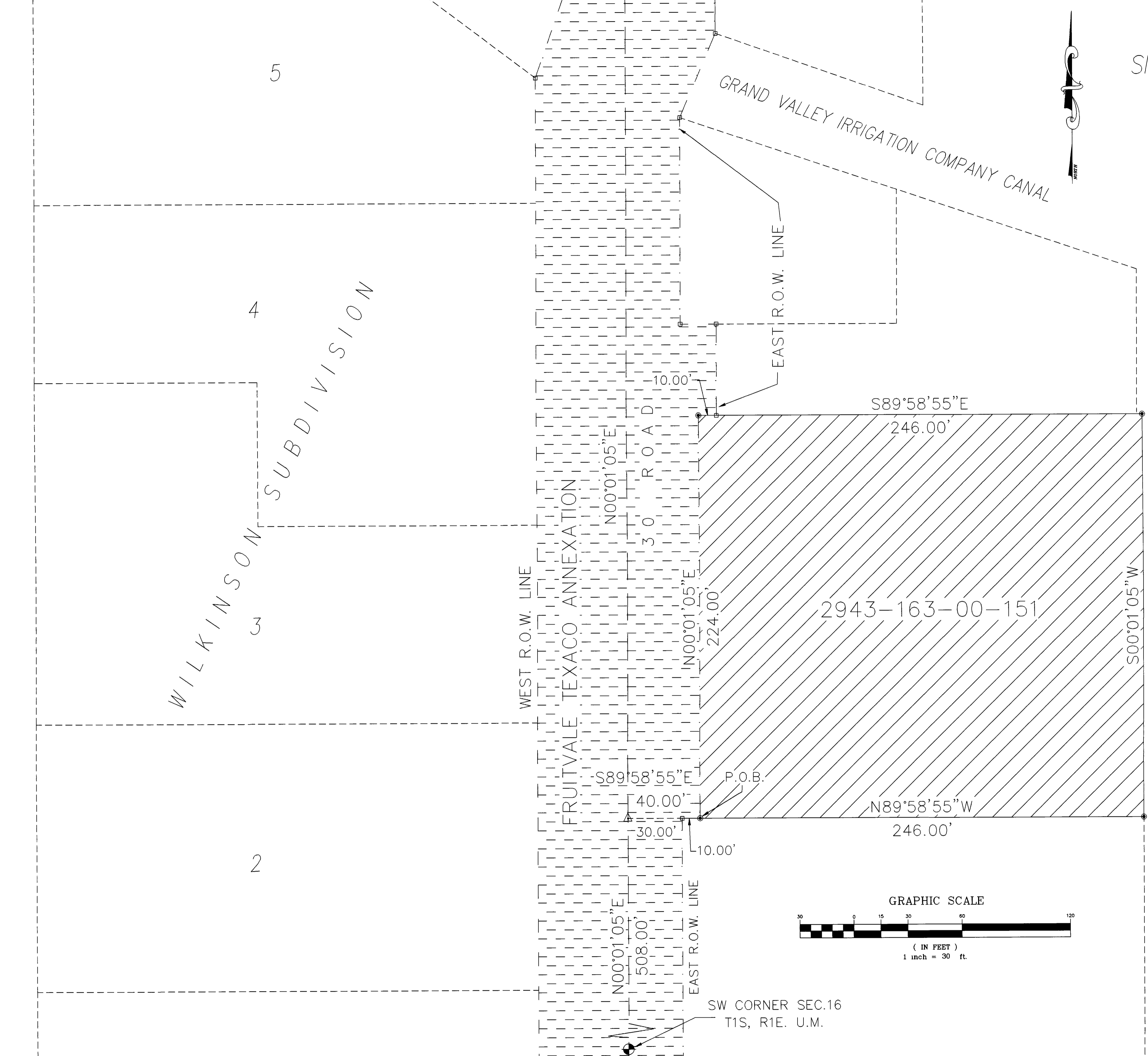
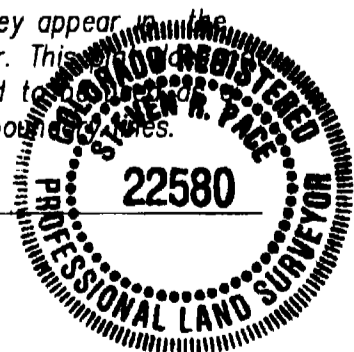
3173

### EFFECTIVE DATE

SEPT. 19, 1999

The Description(s) contained herein have been derived from subdivision plats and deed descriptions as they appear in the office of the Mesa County Clerk and Recorder. This does not constitute a legal survey, and is not intended to be used as a means for establishing or verifying property boundaries.

*Stan R. Pace*  
SENIOR REAL ESTATE TECHNICIAN, PLS 22580



Notice:  
According to Colorado law you have 60 days from the effective date shown hereon to file a complaint based upon any defect on this plat. If no complaint is filed within said 60 days then said plat stands despite all defects and or errors

DRAWN BY SRP DATE 6-15-99  
DESIGNED BY DATE  
CHECKED BY DATE  
APPROVED BY DATE

SCALE  
1" = 30'

DEPARTMENT OF PUBLIC WORKS AND UTILITIES  
ENGINEERING AND TECHNICAL SERVICES DIVISIONS  
CITY OF GRAND JUNCTION, COLORADO

SHARP ANNEXATION  
SHARP DWG