

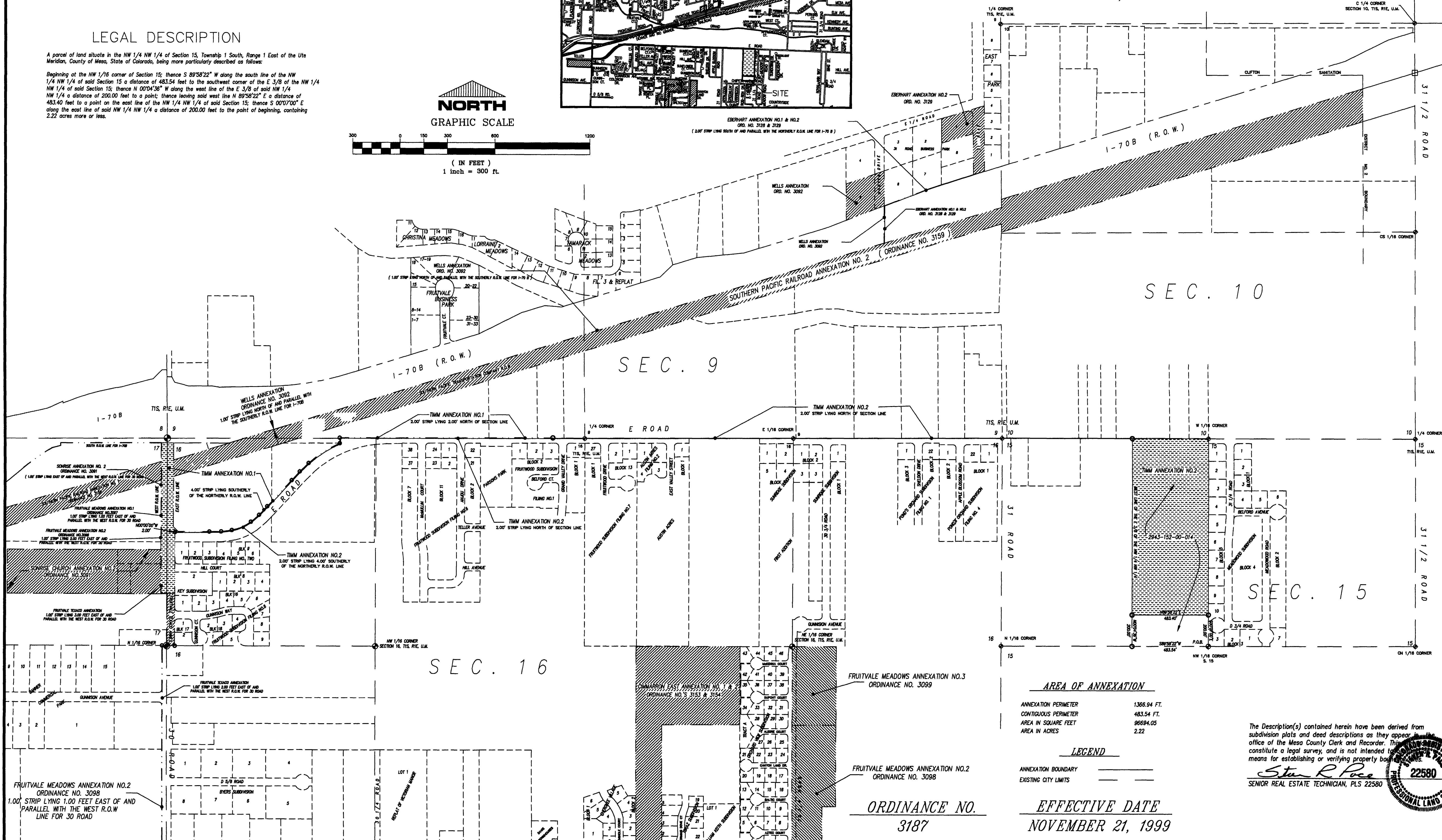
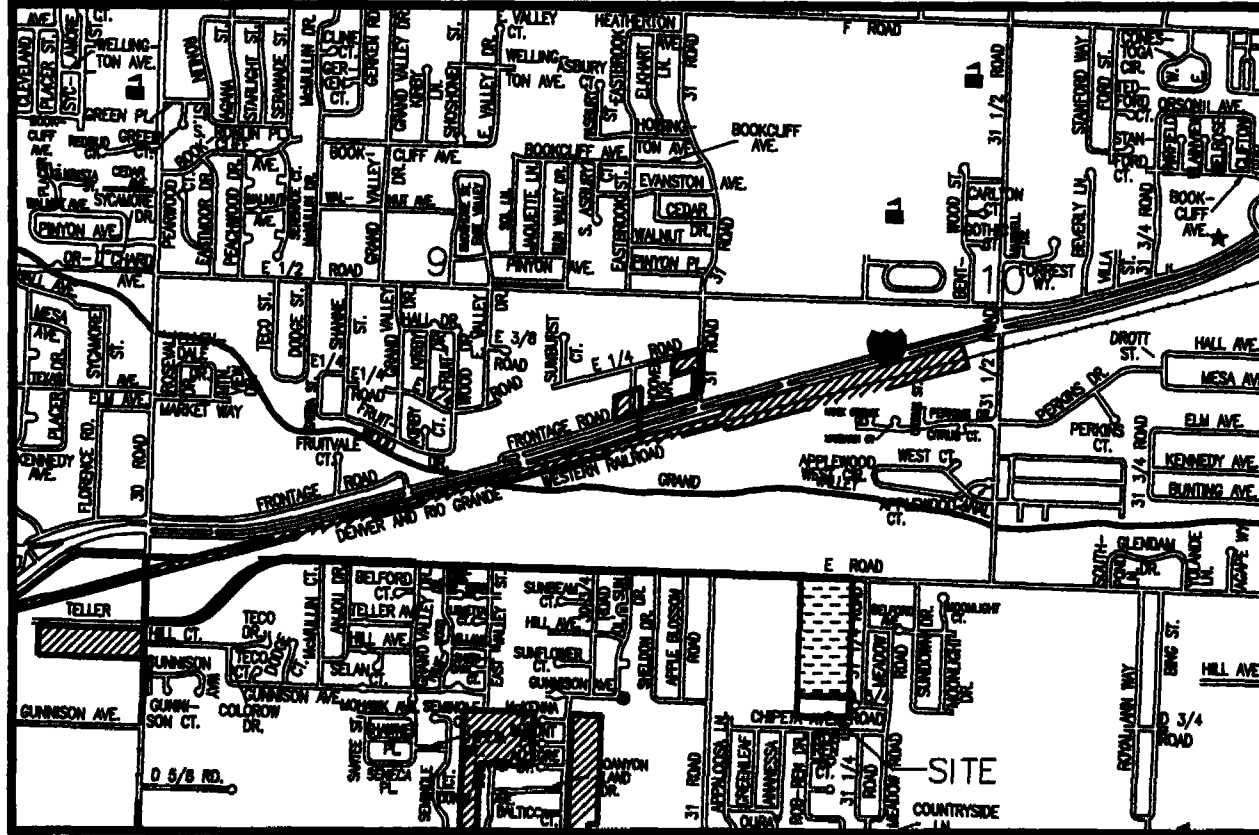
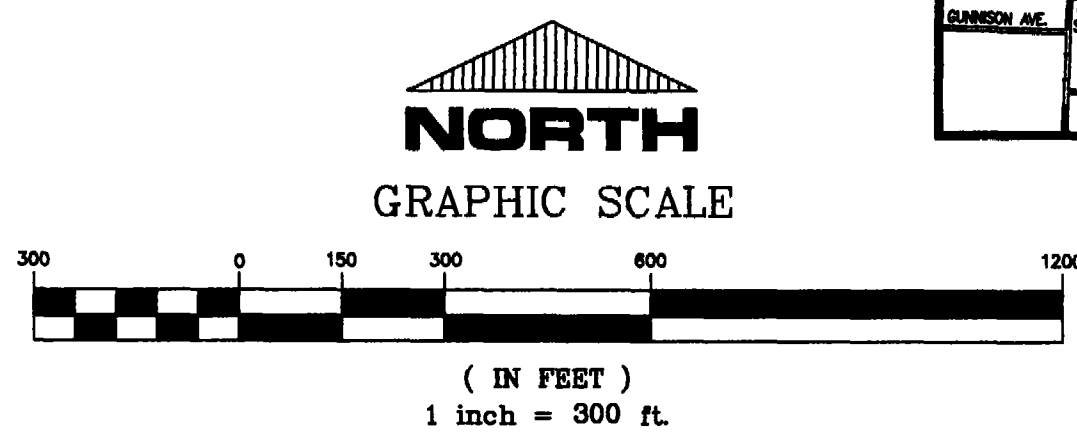
# TIMM ANNEXATION NO. 3

SITUATE IN THE NW 1/4 NW 1/4 OF SECTION 15, T1S, R1E, U.M.  
 COUNTY OF MESA, STATE OF COLORADO

## LEGAL DESCRIPTION

A parcel of land situate in the NW 1/4 NW 1/4 of Section 15, Township 1 South, Range 1 East of the Ute Meridian, County of Mesa, State of Colorado, being more particularly described as follows:

Beginning at the NW 1/16 corner of Section 15; thence S 89°58'22" W along the south line of the NW 1/4 NW 1/4 of said Section 15 a distance of 483.54 feet to the southwest corner of the E 3/8 of the NW 1/4 NW 1/4 of said Section 15; thence N 00°04'36" W along the west line of the E 3/8 of said NW 1/4 NW 1/4 of said Section 15; thence leaving said west line N 89°58'22" E a distance of 200.00 feet to a point; thence leaving said west line N 89°58'22" E a distance of 483.40 feet to a point on the east line of the NW 1/4 NW 1/4 of said Section 15; thence S 00°07'00" E along the east line of said NW 1/4 NW 1/4 a distance of 200.00 feet to the point of beginning, containing 2.22 acres more or less.



**AREA OF ANNEXATION**

ANNEXATION PERIMETER	1366.94 FT.
CONTIGUOUS PERIMETER	483.54 FT.
AREA IN SQUARE FEET	96694.05
AREA IN ACRES	2.22

**LEGEND**

ANNEXATION BOUNDARY	—
EXISTING CITY LIMITS	—

**ORDINANCE NO.**  
 3187

**EFFECTIVE DATE**  
 NOVEMBER 21, 1999

The Description(s) contained herein have been derived from subdivision plats and deed descriptions as they appear in the office of the Mesa County Clerk and Recorder. This does not constitute a legal survey, and is not intended to be used as a means for establishing or verifying property boundaries.

*Stan R. Pice*  
 SENIOR REAL ESTATE TECHNICIAN, PLS 22580

Notice:  
 According to Colorado law you have 90 days from the effective date shown hereon to file a complaint based upon any defect on this plat. If no complaint is filed within said 90 days then said plat stands despite all defects and/or errors.

DRAWN BY SRP	DATE 8-12-99	SCALE
DESIGNED BY	DATE	1" = 300'
CHECKED BY	DATE	
APPROVED BY	DATE	

DEPARTMENT OF PUBLIC WORKS AND UTILITIES  
 ENGINEERING AND TECHNICAL SERVICES DIVISIONS  
 CITY OF GRAND JUNCTION, COLORADO