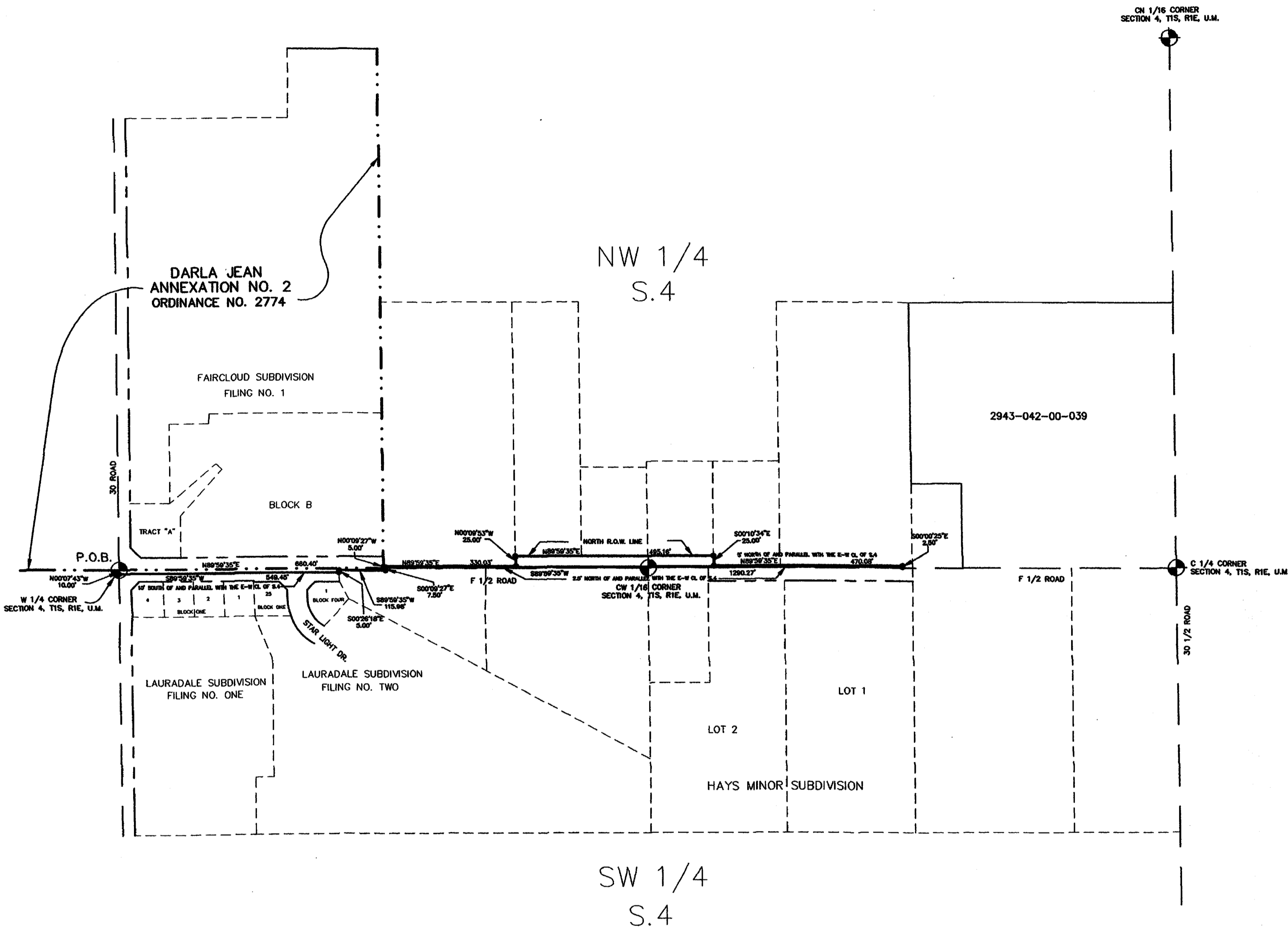
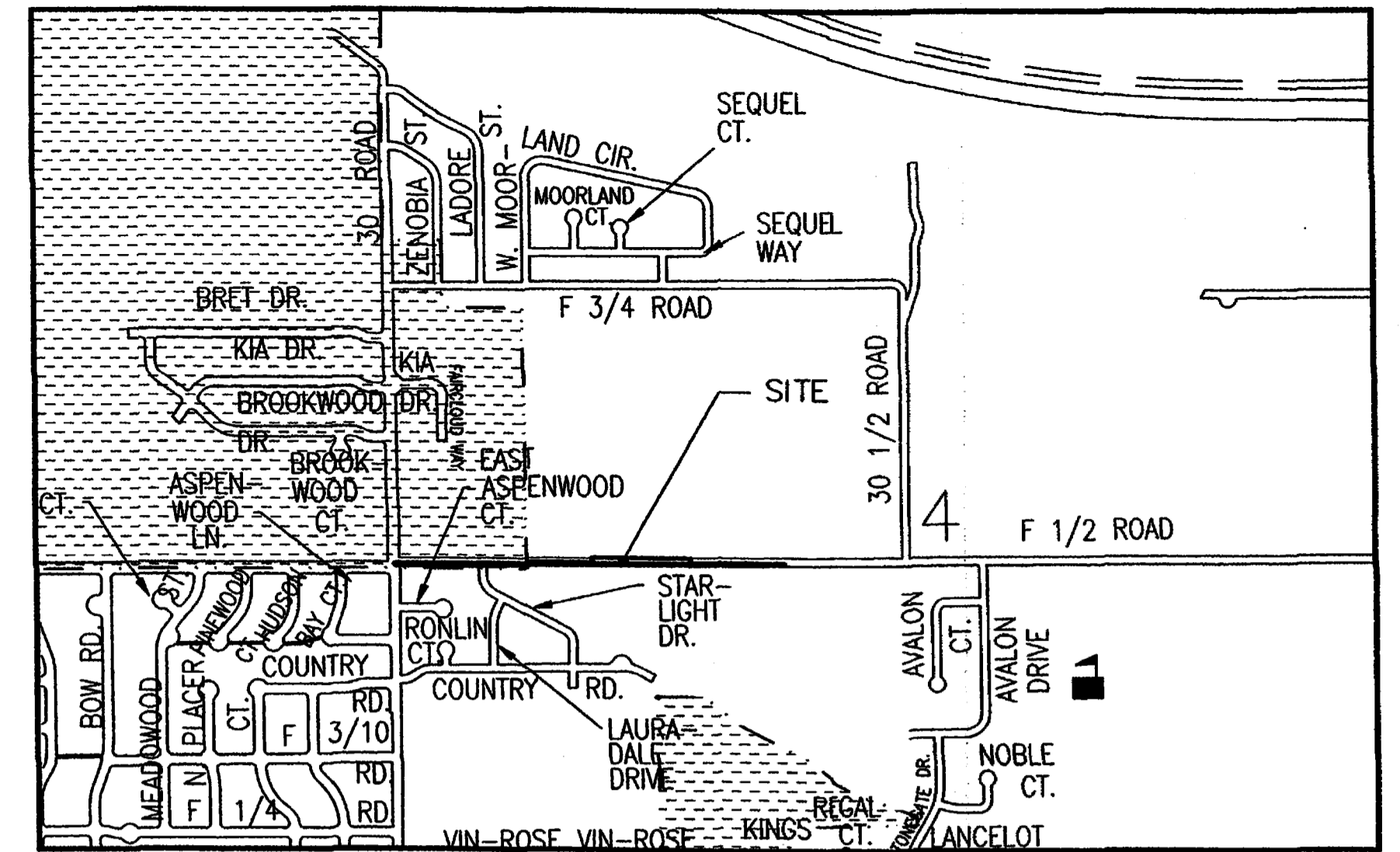


# GODBY ANNEXATION NO.1

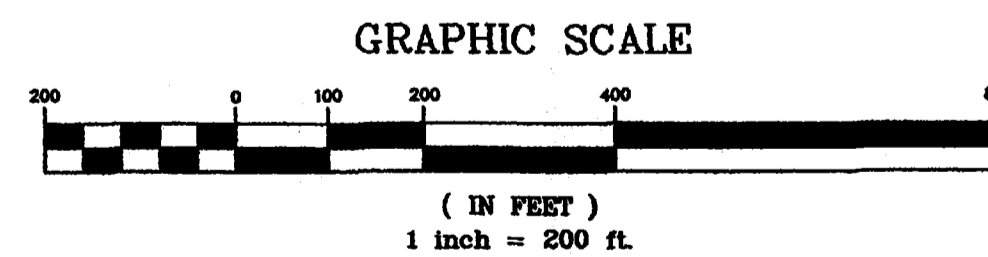
SITUATE IN THE SW 1/4 & NW 1/4, SECTION 4  
TOWNSHIP 1 SOUTH, RANGE 1 EAST OF THE UTE MERIDIAN  
COUNTY OF MESA, STATE OF COLORADO



### LEGAL DESCRIPTION

A parcel of land situate in the SW 1/4 and in the NW 1/4 of Section 4, Township 1 South, Range 1 East of the Ute Meridian, County of Mesa, State of Colorado, being more particularly described as follows:

Beginning at the W 1/4 corner of Section 4; thence N 89°59'35" E along the east-west centerline of said Section 4 a distance of 660.40 feet to a point; thence leaving said east-west centerline N 00°09'27" W a distance of 5.00 feet to a point; thence N 89°59'35" E along a line 5.00 feet north of and parallel with the east-west centerline of said Section 4 a distance of 330.03 feet to a point; thence N 00°09'53" W a distance of 25.00 feet to a point; thence N 89°59'35" E along the north right of way line for F 1/2 Road a distance of 495.16 feet to a point; thence leaving said north right of way line S 00°10'34" E a distance of 25.00 feet to a point; thence N 89°59'35" E along a line 5.00 feet north of and parallel with the east-west centerline of said Section 4 a distance of 470.08 feet to a point; thence S 00°00'25" E a distance of 2.50 feet to a point; thence S 89°59'35" W along a line 2.50 feet north of and parallel with the east-west centerline of said Section 4 a distance of 1290.27 feet to a point; thence S 00°09'27" E a distance of 7.50 feet to a point; thence S 89°59'35" W along a line 5.00 feet south of and parallel with the east-west centerline of said Section 4 a distance of 115.98 feet to a point; thence S 00°26'18" E a distance of 5.00 feet to a point; thence S 89°59'35" W along a line 10.00 feet south of and parallel with the east-west centerline of said Section 4 a distance of 549.45 feet to a point on the west line of the SW 1/4 of said Section 4; thence N 00°07'43" W along the west line of said SW 1/4 a distance of 10.00 feet to the point of beginning.



### AREA OF ANNEXATION

ANNEXATION PERIMETER	3991.37 FT.
CONTIGUOUS PERIMETER	665.40 FT.
AREA IN SQUARE FEET	21703.78
AREA IN ACRES	0.50

### LEGEND

ANNEXATION BOUNDARY	—————
EXISTING CITY LIMITS	- - - - -

**ORDINANCE NO.**  
**3259**

**EFFECTIVE DATE**  
**JULY 9, 2000**

The Description(s) contained herein have been derived from subdivision plats and deed descriptions as they appear in the office of the Mesa County Clerk and Recorder. This constitutes a legal survey, and is not intended to be a means for establishing or verifying property boundaries.

*Star R. Pice*  
SENIOR REAL ESTATE TECHNICIAN, PLS 22580



Notice: According to Colorado law you have 60 days from the effective date shown hereon to file a complaint based upon any defect on this plat. If no complaint is filed within said 60 days then said plat stands despite all defects and or errors.

DRAWN BY SRP	DATE 4-26-2000	SCALE
DESIGNED BY	DATE	1" = 200'
CHECKED BY	DATE	
APPROVED BY	DATE	

**DEPARTMENT OF PUBLIC WORKS AND UTILITIES**  
**ENGINEERING AND TECHNICAL SERVICES DIVISIONS**  
**CITY OF GRAND JUNCTION, COLORADO**

**GODBY ANNEXATION**

GODBY.DWG