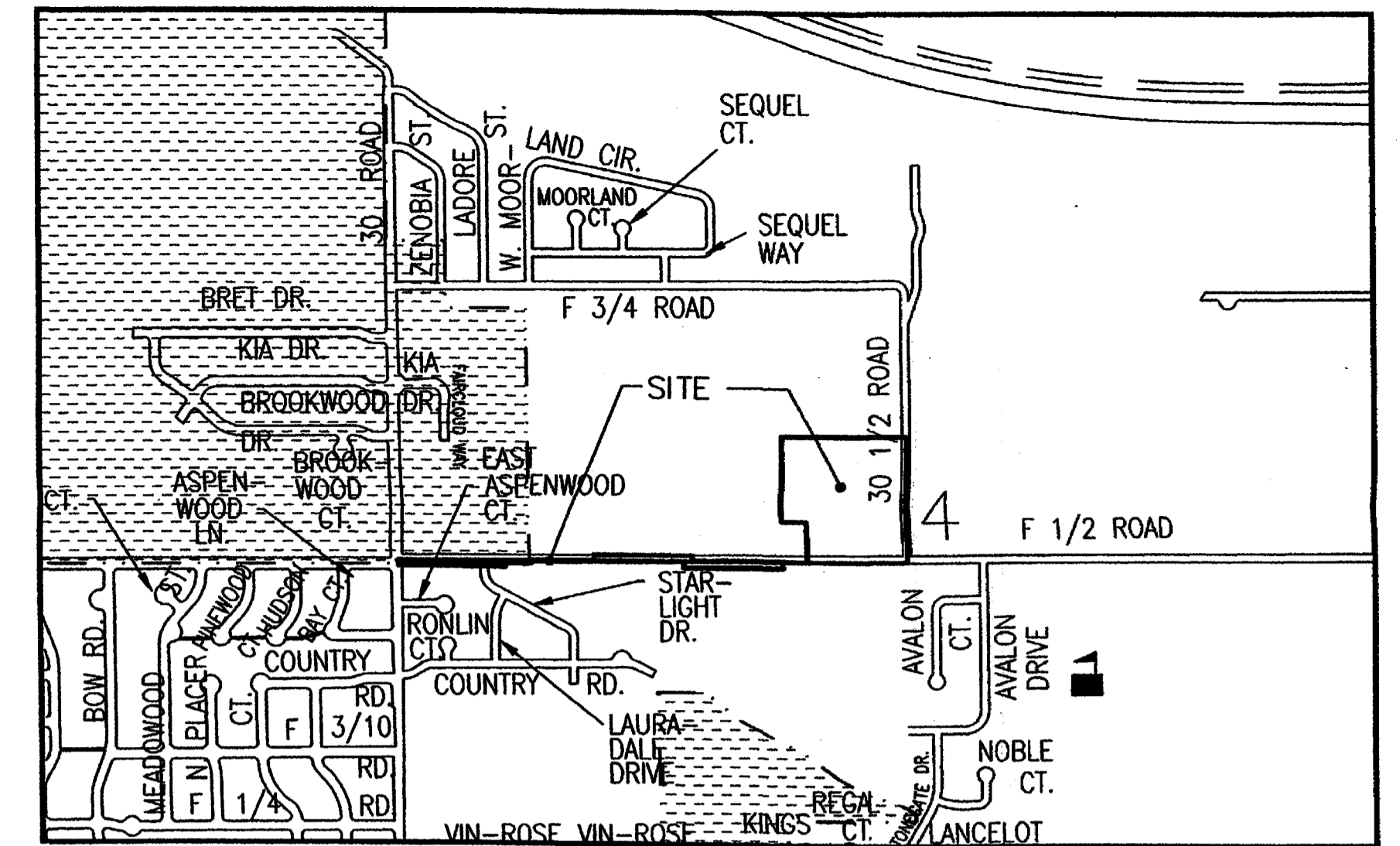


# GODBY ANNEXATION NO.2

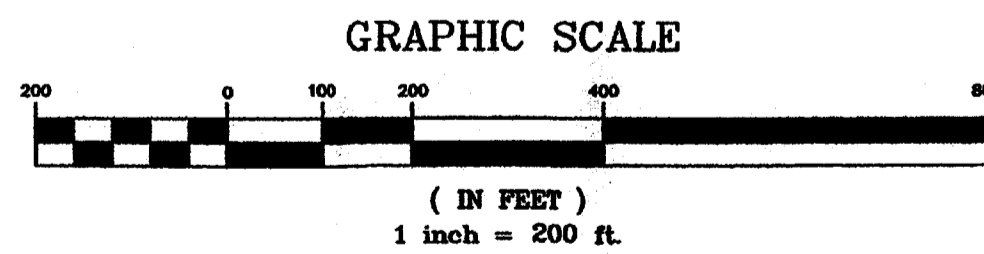
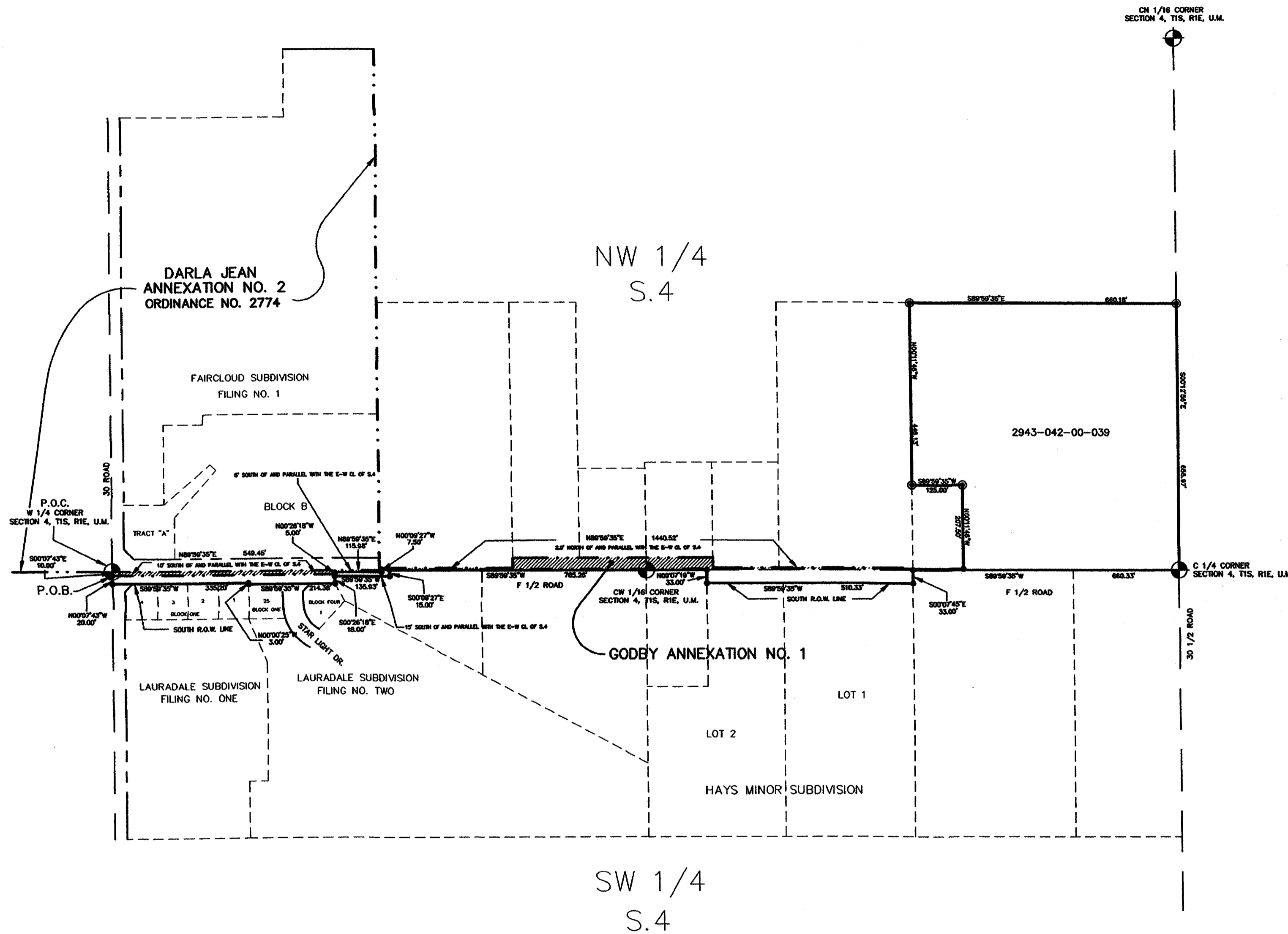
SITUATE IN THE SW 1/4 & NW 1/4, SECTION 4  
TOWNSHIP 1 SOUTH, RANGE 1 EAST OF THE UTE MERIDIAN  
COUNTY OF MESA, STATE OF COLORADO



### LEGAL DESCRIPTION

A parcel of land situate in the SW 1/4 and in the NW 1/4 of Section 4, Township 1 South, Range 1 East of the Ute Meridian, County of Mesa, State of Colorado, being more particularly described as follows:

Commencing at the W 1/4 corner of Section 4; thence S 00°07'43" E along the west line of the SW 1/4 of said Section 4 a distance of 10.00 feet to the True Point of Beginning of the parcel described herein; thence N 89°59'35" E along a line 10.00 feet south of and parallel with the east-west centerline of said Section 4 a distance of 549.45 feet to a point; thence N 00°26'18" W a distance of 5.00 feet to a point; thence N 89°59'35" E along a line 5.00 feet south of and parallel with the east-west centerline of said Section 4 a distance of 115.98 feet to a point; thence N 00°09'27" W a distance of 7.50 feet to a point; thence N 89°59'35" E along a line 2.50 feet north of and parallel with the east-west centerline of said Section 4 a distance of 1440.52 feet to a point; thence N 00°11'46" W a distance of 207.50 feet to a point; thence S 89°59'35" W a distance of 125.00 feet to a point; thence N 00°11'46" W a distance of 446.13 feet to a point; thence S 89°59'35" E a distance of 660.18 feet to a point on the east line of the NW 1/4 of said Section 4; thence S 00°12'56" E along the north-south centerline of said Section 4 a distance of 655.97 feet to the C 1/4 corner of said Section 4; thence S 89°59'35" W along the east-west centerline of said Section 4 a distance of 660.33 feet to a point; thence leaving said east-west centerline S 00°07'45" E a distance of 33.00 feet to a point; thence S 89°59'35" W along the south right of way line for F 1/2 Road a distance of 510.33 feet to a point; thence leaving said south right of way line N 00°07'19" W a distance of 33.00 feet to a point on the east-west centerline of said Section 4; thence S 89°59'35" W along said east-west centerline a distance of 785.26 feet to a point; thence leaving said east-west centerline S 00°09'27" E a distance of 15.00 feet to a point; thence S 89°59'35" W along a line 15.00 feet south of and parallel with the east-west centerline of said Section 4 a distance of 135.93 feet to a point; thence S 00°26'18" E a distance of 18.00 feet to a point on the south right of way line for said F 1/2 Road; thence along the south right of way line for said F 1/2 Road the following 3 courses:  
 1) S 89°59'35" W a distance of 214.38 feet to a point;  
 2) N 00°00'25" W a distance of 3.00 feet to a point;  
 3) S 89°59'35" W a distance of 335.20 feet to a point on the west line of the SW 1/4 of said Section 4;  
 thence N 00°07'43" W along the west line of the SW 1/4 of said Section 4 a distance of 20.00 feet to the point of beginning.



### AREA OF ANNEXATION

|                      |             |
|----------------------|-------------|
| ANNEXATION PERIMETER | 6976.66 FT. |
| CONTIGUOUS PERIMETER | 1968.20 FT. |
| AREA IN SQUARE FEET  | 440464.19   |
| AREA IN ACRES        | 10.11       |

### LEGEND

|                      |           |
|----------------------|-----------|
| ANNEXATION BOUNDARY  | —————     |
| EXISTING CITY LIMITS | - - - - - |

**ORDINANCE NO.**  
**3260**

**EFFECTIVE DATE**  
**JULY 9, 2000**

The Description(s) contained herein have been derived from subdivision plats and deed descriptions as they appear in the office of the Mesa County Clerk and Recorder. This constitutes a legal survey, and is not intended to be a means for establishing or verifying property boundaries.

*Stan R. Poe*  
SENIOR REAL ESTATE TECHNICIAN, PLS 22580

|             |       |      |           |
|-------------|-------|------|-----------|
| DRAWN BY    | SRP   | DATE | 4-26-2000 |
| DESIGNED BY | _____ | DATE | _____     |
| CHECKED BY  | _____ | DATE | _____     |
| APPROVED BY | _____ | DATE | _____     |

SCALE  
1" = 200'

DEPARTMENT OF PUBLIC WORKS AND UTILITIES  
ENGINEERING AND TECHNICAL SERVICES DIVISIONS  
CITY OF GRAND JUNCTION, COLORADO

GODBY ANNEXATION NO.2