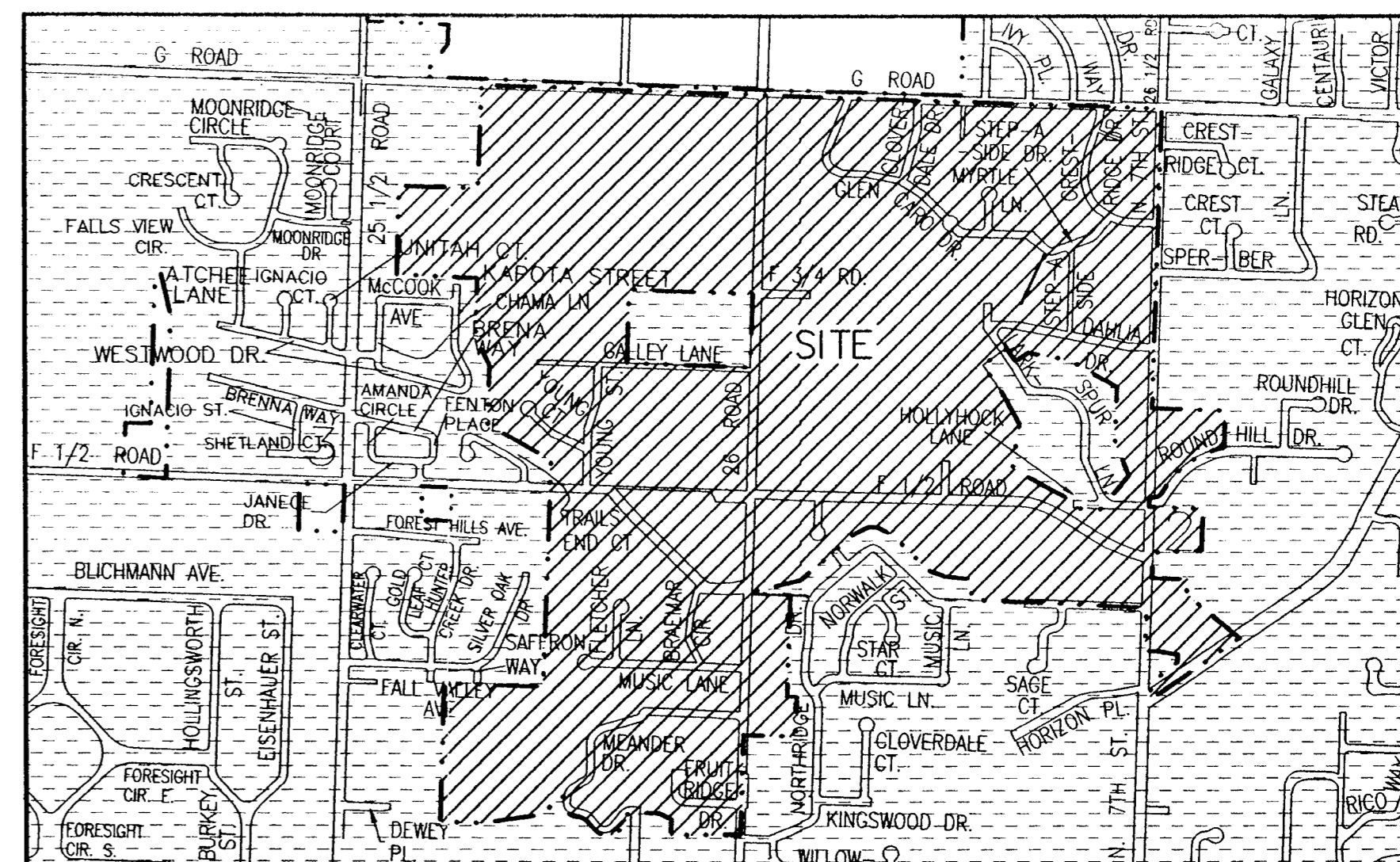
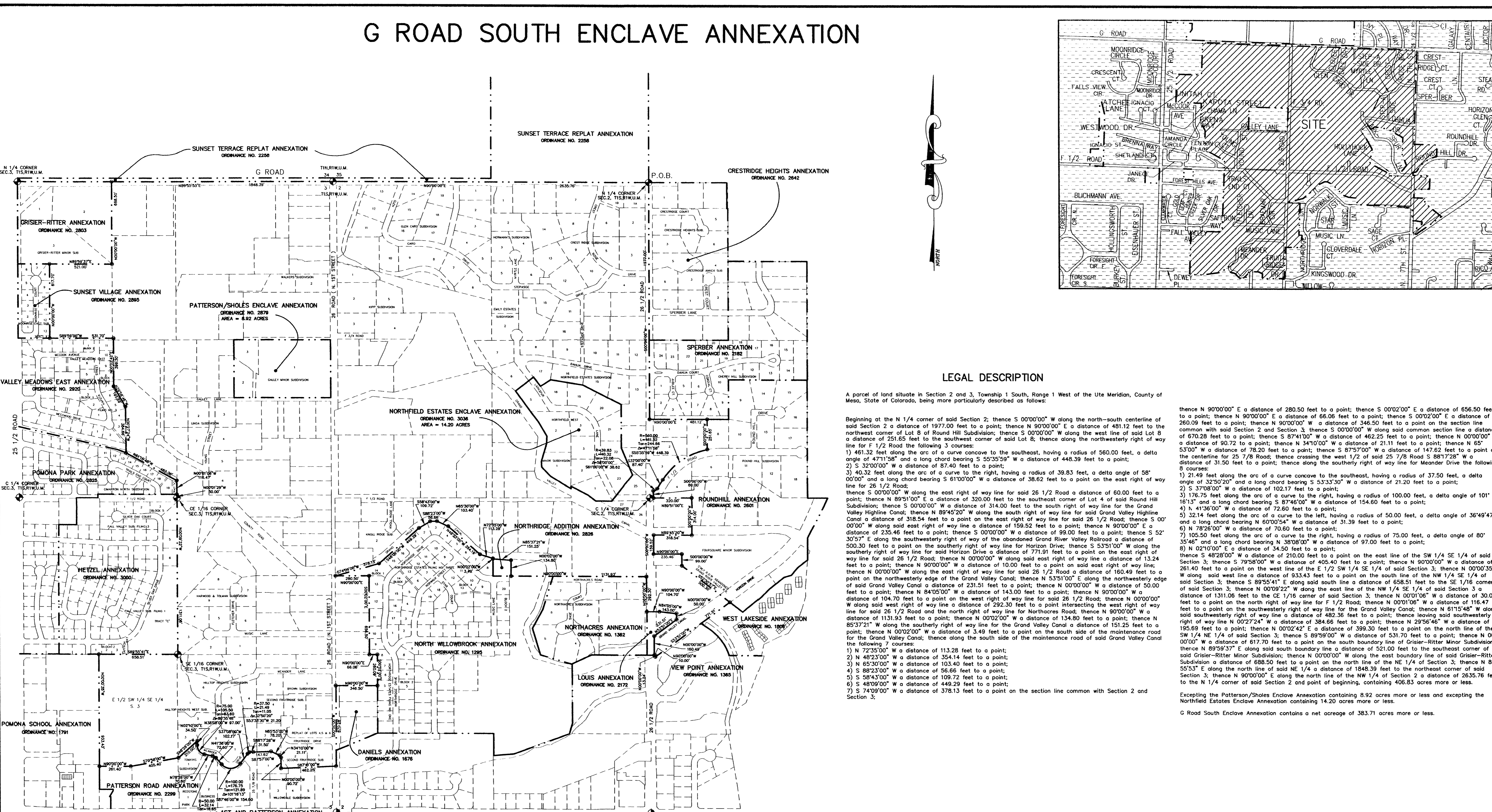


# G ROAD SOUTH ENCLAVE ANNEXATION



### LEGAL DESCRIPTION

A parcel of land situate in Section 2 and 3, Township 1 South, Range 1 West of the Ute Meridian, County of Mesa, State of Colorado, being more particularly described as follows:

Beginning at the N 1/4 corner of said Section 2; thence S 00°00'00" W along the north-south centerline of said Section 2 a distance of 1977.00 feet to a point; thence N 90°00'00" E a distance of 481.12 feet to the northwest corner of Lot B of Round Hill Subdivision; thence S 00°00'00" W along the west line of said Lot B a distance of 251.65 feet to the southwest corner of said Lot B; thence along the northwesterly right of way line for F 1/2 Road the following 3 courses:

- 1) 461.32 feet along the arc of a curve concave to the southeast, having a radius of 560.00 feet, a delta angle of 47°11'58" and a long chord bearing S 55°35'59" W a distance of 448.39 feet to a point;
- 2) S 32°00'00" W a distance of 87.40 feet to a point;
- 3) 40.32 feet along the arc of a curve to the right, having a radius of 39.83 feet, a delta angle of 58°00'00" and a long chord bearing S 61°00'00" W a distance of 38.62 feet to a point on the east right of way line for 26 1/2 Road;

thence S 00°00'00" W along the east right of way line for said 26 1/2 Road a distance of 60.00 feet to a point; thence N 89°51'00" E a distance of 320.00 feet to the southeast corner of Lot 4 of said Round Hill Subdivision; thence S 00°00'00" W a distance of 314.00 feet to the south right of way line for the Grand Valley Highline Canal; thence N 89°45'20" W along the south right of way line for said Grand Valley Highline Canal a distance of 318.54 feet to a point on the east right of way line for said 26 1/2 Road; thence S 00°00'00" W along said east right of way line a distance of 159.52 feet to a point; thence N 90°00'00" E a distance of 235.46 feet to a point; thence S 00°00'00" W a distance of 99.00 feet to a point; thence S 52°30'57" E along the southwesterly right of way line for the abandoned Grand River Valley Railroad a distance of 500.30 feet to a point on the southerly right of way line for Horizon Drive; thence S 53°51'00" W along the southerly right of way line for said Horizon Drive a distance of 771.91 feet to a point on the east right of way line for said 26 1/2 Road; thence N 00°00'00" W along said east right of way line a distance of 13.24 feet to a point; thence N 90°00'00" W a distance of 10.00 feet to a point on said east right of way line; thence N 00°00'00" W along the east right of way line for said 26 1/2 Road a distance of 160.49 feet to a point on the northwesterly edge of the Grand Valley Canal; thence N 53°51'00" E along the northwesterly edge of said Grand Valley Canal a distance of 231.51 feet to a point; thence N 00°00'00" W a distance of 50.00 feet to a point; thence N 84°35'00" W a distance of 143.00 feet to a point; thence N 90°00'00" W a distance of 104.70 feet to a point on the west right of way line for said 26 1/2 Road; thence N 00°00'00" W along said west right of way line a distance of 292.30 feet to a point intersecting the west right of way line for said 26 1/2 Road and the north right of way line for Northcross Road; thence N 90°00'00" W a distance of 1131.93 feet to a point; thence N 00°02'00" W a distance of 134.80 feet to a point; thence N 85°37'21" W along the southerly right of way line for the Grand Valley Canal a distance of 151.25 feet to a point; thence N 00°02'00" W a distance of 3.49 feet to a point on the south side of the maintenance road for the Grand Valley Canal; thence along the south side of the maintenance road of said Grand Valley Canal the following 7 courses:

- 1) N 72°55'00" W a distance of 113.28 feet to a point;
- 2) N 48°23'00" W a distance of 354.14 feet to a point;
- 3) N 65°30'00" W a distance of 103.40 feet to a point;
- 4) S 88°23'00" W a distance of 56.66 feet to a point;
- 5) S 38°43'00" W a distance of 109.72 feet to a point;
- 6) S 48°09'00" W a distance of 449.29 feet to a point;
- 7) S 74°09'00" W a distance of 378.13 feet to a point on the section line common with Section 2 and Section 3;

thence N 90°00'00" E a distance of 280.50 feet to a point; thence S 00°02'00" E a distance of 656.50 feet to a point; thence N 90°00'00" E a distance of 6.06 feet to a point; thence S 00°00'00" E a distance of 260.09 feet to a point; thence N 90°00'00" W a distance of 346.50 feet to a point on the section line common with said Section 2 and Section 3; thence S 00°00'00" W along said common section line a distance of 670.25 feet to a point; thence S 87°41'00" W a distance of 462.25 feet to a point; thence N 00°00'00" W a distance of 90.72 feet to a point; thence N 34°10'00" W a distance of 21.11 feet to a point; thence N 65°53'00" W a distance of 78.20 feet to a point; thence S 87°57'00" W a distance of 147.62 feet to a point on the centerline for 25 7/8 Road; thence crossing the west 1/2 of said 25 7/8 Road S 88°17'28" W a distance of 31.50 feet to a point; thence along the southerly right of way line for Meander Drive the following 8 courses:

- 1) 21.49 feet along the arc of a curve concave to the southeast, having a radius of 37.50 feet, a delta angle of 32°50'20" and a long chord bearing S 53°33'30" W a distance of 21.20 feet to a point;
- 2) S 37°08'00" W a distance of 102.17 feet to a point;
- 3) 176.75 feet along the arc of a curve to the right, having a radius of 100.00 feet, a delta angle of 101°16'13" and a long chord bearing S 87°46'00" W a distance of 154.60 feet to a point;
- 4) N 41°58'00" W a distance of 72.60 feet to a point;
- 5) 32.14 feet along the arc of a curve to the left, having a radius of 50.00 feet, a delta angle of 36°49'47" and a long chord bearing N 60°09'54" W a distance of 31.39 feet to a point;
- 6) N 78°28'00" W a distance of 70.60 feet to a point;
- 7) 105.50 feet along the arc of a curve to the right, having a radius of 75.00 feet, a delta angle of 80°35'46" and a long chord bearing N 38°08'00" W a distance of 97.00 feet to a point;
- 8) N 02°10'00" E a distance of 34.50 feet to a point;

thence S 48°28'00" W a distance of 210.00 feet to a point on the east line of the SW 1/4 SE 1/4 of said Section 3; thence S 79°58'00" W a distance of 405.40 feet to a point; thence N 90°00'00" W a distance of 281.40 feet to a point on the west line of the E 1/2 SW 1/4 SE 1/4 of said Section 3; thence N 00°00'35" W along said west line a distance of 933.43 feet to a point on the south line of the NW 1/4 SE 1/4 of said Section 3; thence S 89°55'41" E along said south line a distance of 658.51 feet to the SE 1/16 corner of said Section 3; thence N 00°09'22" W along the east line of the NW 1/4 SE 1/4 of said Section 3 a distance of 1311.06 feet to the CE 1/16 corner of said Section 3; thence N 00°10'06" W a distance of 30.00 feet to a point on the north right of way line for F 1/2 Road; thence N 00°01'06" W a distance of 116.47 feet to a point on the north right of way line for F 1/2 Road; thence N 00°01'06" W a distance of 116.47 feet to a point on the north right of way line for the Grand Valley Canal; thence N 61°15'48" W along said southwesterly right of way line a distance of 482.36 feet to a point; thence leaving said southwesterly right of way line N 00°27'24" W a distance of 384.66 feet to a point; thence N 29°56'46" W a distance of 195.69 feet to a point; thence N 00°02'42" E a distance of 398.20 feet to a point on the north line of the SW 1/4 NE 1/4 of said Section 3; thence S 89°59'00" W a distance of 531.70 feet to a point; thence N 00°00'00" W a distance of 617.70 feet to a point on the south boundary line of Griser-Ritter Minor Subdivision; thence N 89°59'37" E along said south boundary line a distance of 521.00 feet to the southeast corner of said Griser-Ritter Minor Subdivision; thence N 00°00'00" W along the east boundary line of said Griser-Ritter Subdivision a distance of 688.50 feet to a point on the north line of the NE 1/4 of Section 3; thence N 89°55'53" E along the north line of said NE 1/4 a distance of 1848.39 feet to the northeast corner of said Section 3; thence N 90°00'00" E along the north line of the NW 1/4 of Section 2 a distance of 2635.76 feet to the N 1/4 corner of said Section 2 and point of beginning, containing 406.83 acres more or less.

Excepting the Patterson/Sholes Enclave Annexation containing 8.92 acres more or less and excepting the Northfield Estates Enclave Annexation containing 14.20 acres more or less.

G Road South Enclave Annexation contains a net acreage of 383.71 acres more or less.

**AREA CALCULATION**

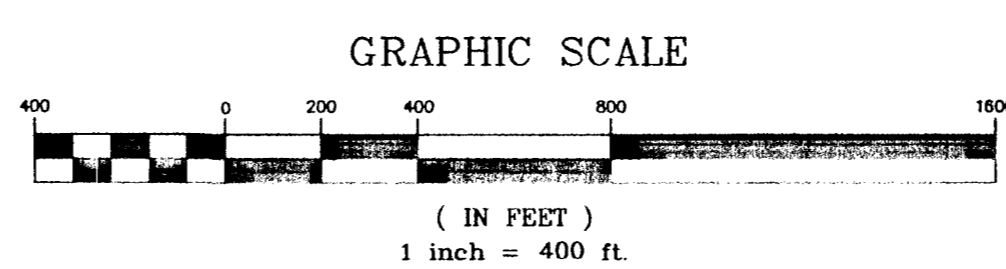
( G ROAD SOUTH ENCLAVE ANNEXATION )	17721629.01 SQ.FT.
( PATTERSON/SHOLES ENCLAVE ANNEXATION )	- 388555.20 SQ.FT.
( NORTHFIELD ESTATES ENCLAVE ANNEXATION )	- 618552.00 SQ.FT.
<b>TOTAL NET AREA =</b>	<b>16714521.81 SQ.FT.</b>
	16714521.81 SQ.FT. / 43560 = 383.71 ACRES

**AREA OF ANNEXATION**

ANNEXATION PERIMETER	26027.28 FT.
CONTIGUOUS PERIMETER	26027.28 FT.
AREA IN SQUARE FEET	16714521.81
AREA IN ACRES	383.71

**LEGEND**

ANNEXATION BOUNDARY	—————
EXISTING CITY LIMITS	- - - - -



**ORDINANCE NO.**  
3264

**EFFECTIVE DATE**  
AUGUST 6, 2000

**Notice:**  
According to Colorado law you have 60 days from the effective date shown herein to file a complaint based upon any defect in this plat. If no complaint is filed within said 60 days then said plat stands despite all defects and/or errors.

**DRAWN BY** SRP      **DATE** 4-18-2000      **SCALE**

**DESIGNED BY** \_\_\_\_\_      **DATE** \_\_\_\_\_

**CHECKED BY** \_\_\_\_\_      **DATE** \_\_\_\_\_

**APPROVED BY** \_\_\_\_\_      **DATE** \_\_\_\_\_

DEPARTMENT OF PUBLIC WORKS AND UTILITIES  
ENGINEERING AND TECHNICAL SERVICES DIVISIONS  
CITY OF GRAND JUNCTION, COLORADO

G ROAD SOUTH ENCLAVE ANNEXATION

1 OF 1

GR\_SOUTH.DWG

