

# BRUTSCHE ANNEXATION

STASSEN ANNEXATION NO.1  
ORDINANCE NO. 2976

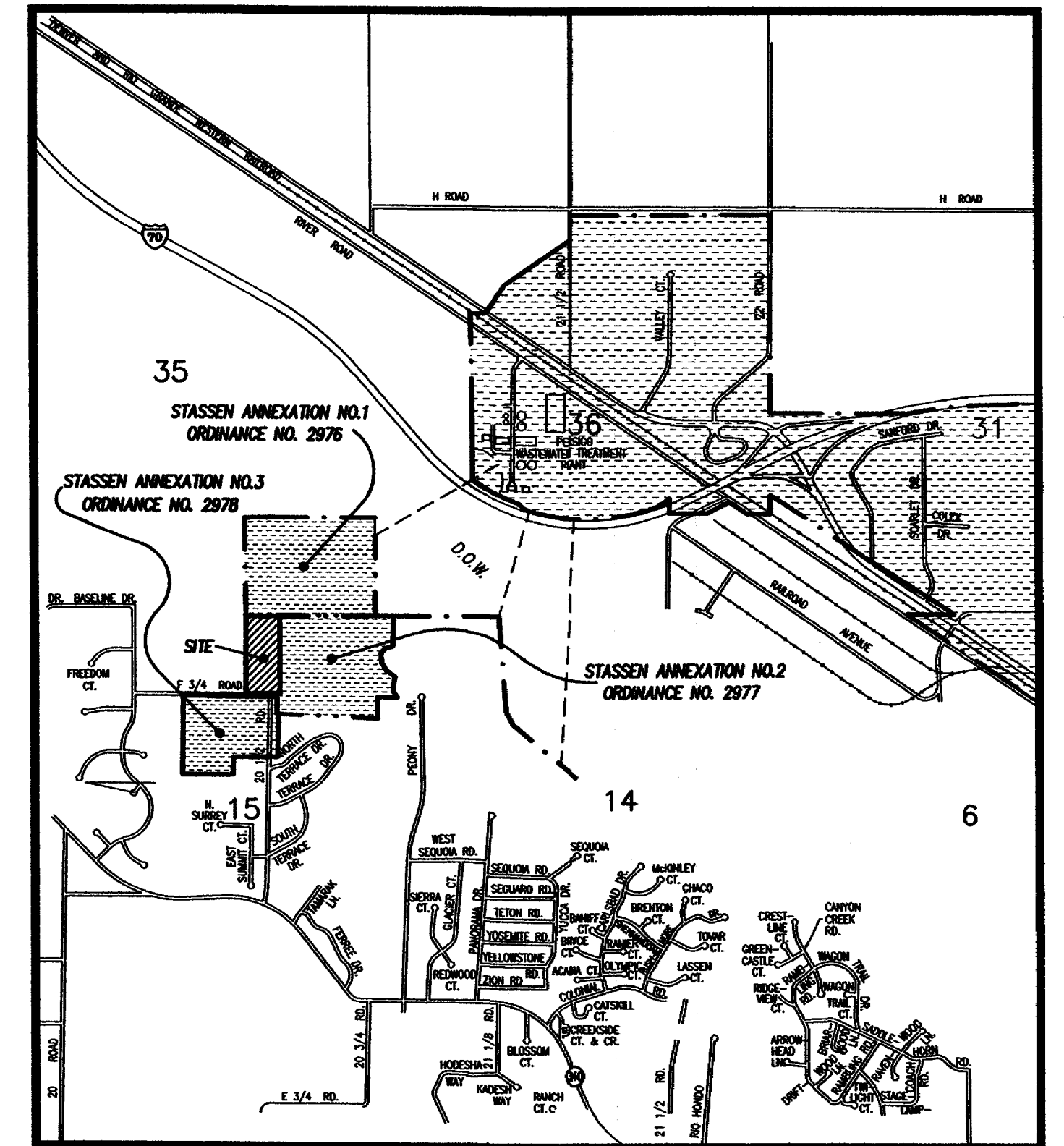
NW 1/4 NE 1/4 SEC. 15  
(GLO LOT 2)  
T 11 S, R 101 W, 6TH P.M.

STASSEN ANNEXATION NO.2  
ORDINANCE NO. 2977

NE 1/4 NW 1/4 SEC. 15  
(GLO LOT 3)  
T 11 S, R 101 W, 6TH P.M.

2947-152-00-129

2947-152-00-027



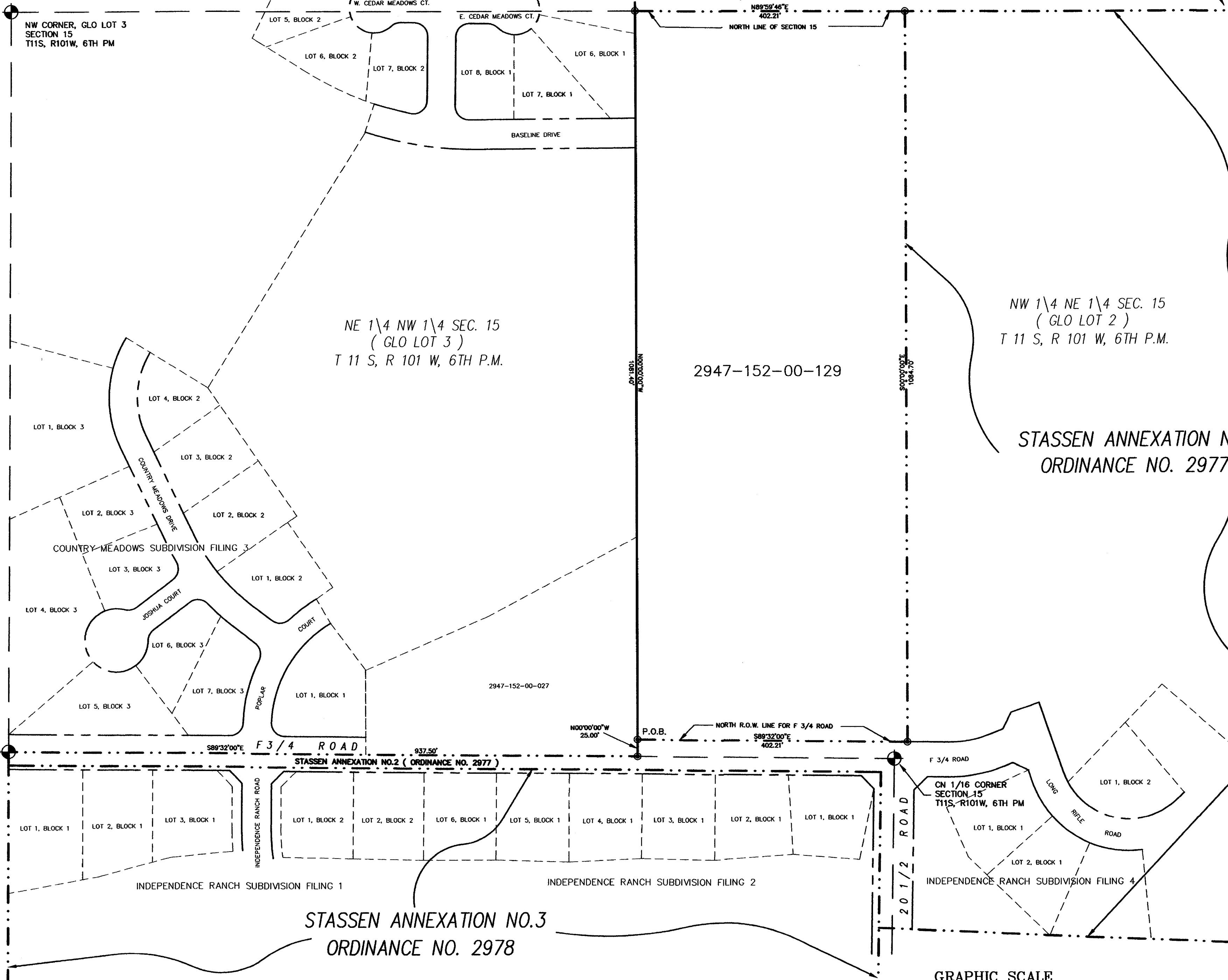
## LEGAL DESCRIPTION

A parcel of land situate in Government Lots 2 and 3 of Section 15, Township 11 South, Range 101 West of the 6th Principal Meridian, County of Mesa, State of Colorado, being more particularly described as follows:

Commencing at the southwest corner of Government Lot 3 (NW 1/16 corner) of said Section 15; thence S 89° 32'00" E along the south line of said Government Lot 3 a distance of 937.50 feet to a point; thence leaving said south line N 00°00'00" W a distance of 25.00 feet to the True Point of Beginning of the parcel described herein; thence N 00°00'00" W a distance of 1081.40 feet to a point on the north line of said Section 15; thence N 89° 59'46" E along the north line of said Section 15 a distance of 402.21 feet to a point; thence leaving said north line S 00°00'00" E a distance of 1084.70 feet to a point; thence N 89°32'00" W along the north right of way line for F 3/4 Road a distance of 402.21 feet to the point of beginning.

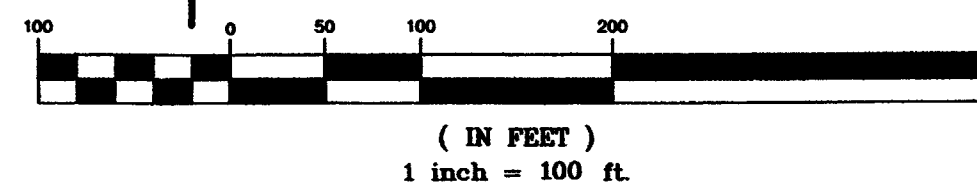
The Description(s) contained herein have been derived from subdivision plats and deed descriptions as they appear in the office of the Mesa County Clerk and Recorder. They constitute a legal survey, and is not intended to be a means for establishing or verifying property boundaries.

*Stan R. Pore*  
SENIOR REAL ESTATE TECHNICIAN, PLS 22580



STASSEN ANNEXATION NO.3  
ORDINANCE NO. 2978

GRAPHIC SCALE



ORDINANCE NO.  
3295

EFFECTIVE DATE  
NOVEMBER 19, 2000

### AREA OF ANNEXATION

ANNEXATION PERIMETER	2970.52 FT.
CONTIGUOUS PERIMETER	1889.12 FT.
AREA IN SQUARE FEET	435612.87
AREA IN ACRES	10.00

### LEGEND

ANNEXATION BOUNDARY	—————
EXISTING CITY LIMITS	- - - - -

DEPARTMENT OF PUBLIC WORKS AND UTILITIES  
ENGINEERING AND TECHNICAL SERVICES DIVISIONS  
CITY OF GRAND JUNCTION, COLORADO

BRUTSCHE ANNEXATION