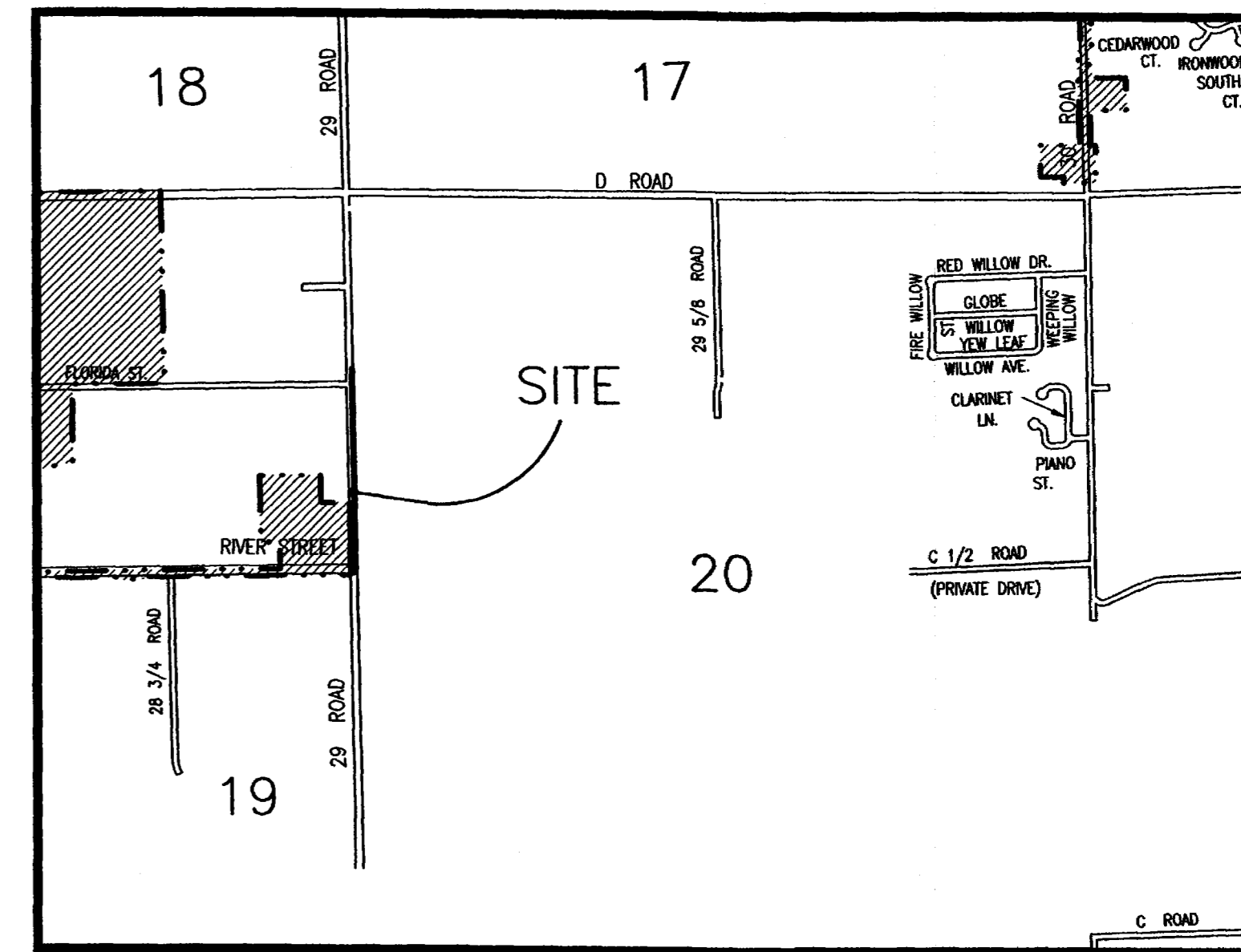
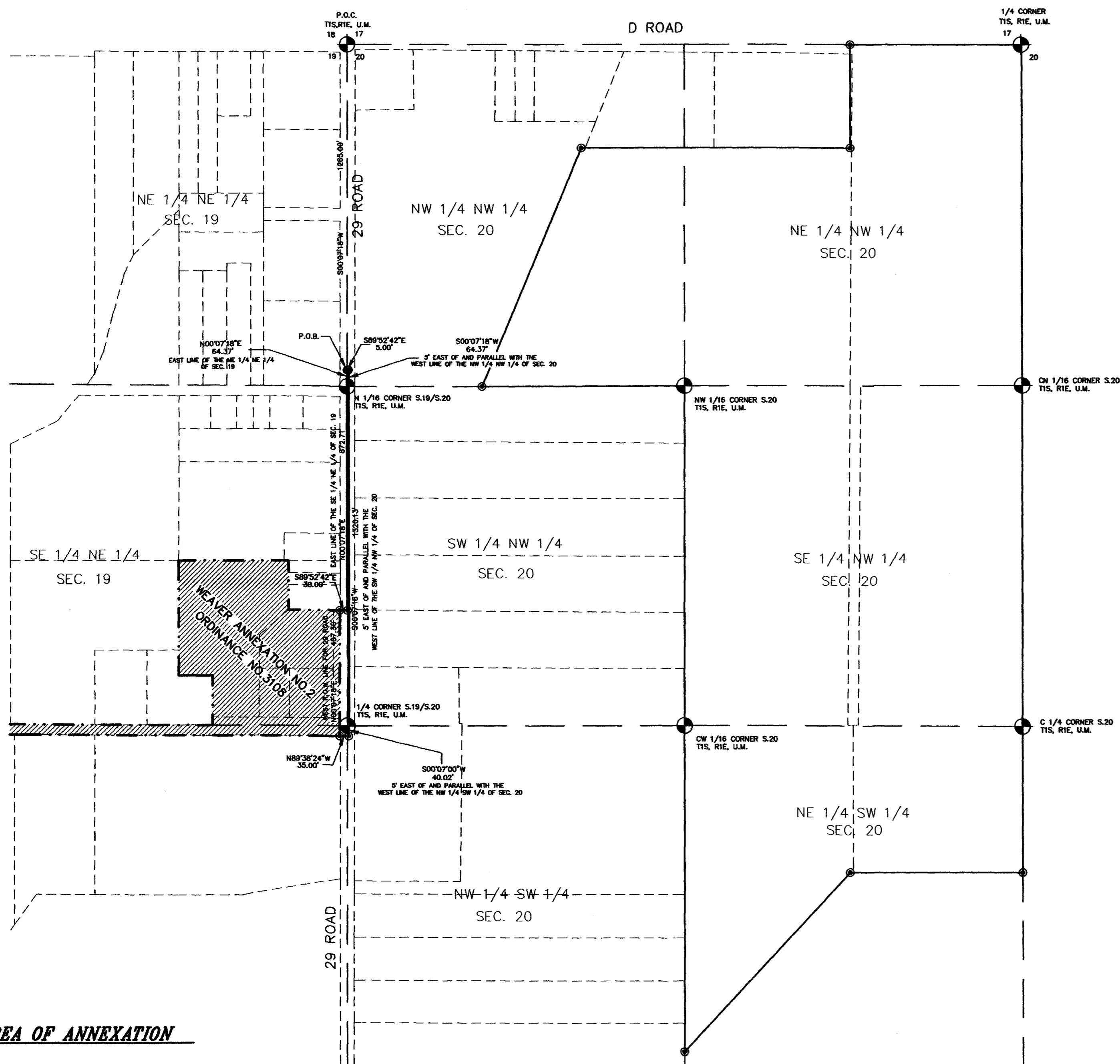


EPHEMERAL RESOURCES ANNEXATION NO. 1

SITUATE IN SECTIONS 19 & 20, TOWNSHIP 1 SOUTH, RANGE 1 EAST, U.M.
COUNTY OF MESA, STATE OF COLORADO



LEGAL DESCRIPTION

A parcel of land situate in Section 19 and Section 20, Township 1 South, Range 1 East of the Ute Meridian, County of Mesa, State of Colorado, being more particularly described as follows:

Commencing at the northwest corner of Section 20; thence S 00°07'18" W along the west line of the NW 1/4 NW 1/4 of said Section 20 a distance of 1265.00 feet to the True Point of Beginning of the parcel described herein; thence S 89°52'42" E a distance of 5.00 feet to a point; thence S 00°07'18" W along a line 5.00 feet east of and parallel with the west line of said NW 1/4 NW 1/4 a distance of 64.37 feet to a point on the north line of the SW 1/4 NW 1/4 of said Section 20; thence S 00°07'18" W along a line 5.00 feet east of and parallel with the west line of said SW 1/4 NW 1/4 a distance of 1320.13 feet to a point on the north line of the NW 1/4 SW 1/4 of said Section 20; thence S 00°07'00" W along a line 5.00 feet east of and parallel with the west line of said NW 1/4 SW 1/4 a distance of 40.02 feet to a point; thence N 89°38'24" W a distance of 35.00 feet to a point on the west right of way line for 29 Road; thence N 00°07'18" E along the west right of way line for said 29 Road a distance of 487.30 feet to a point; thence leaving said west right of way line S 89°52'42" E a distance of 30.00 feet to a point on the east line of the SE 1/4 NE 1/4 of Section 19; thence N 00°07'18" E along the east line of said SE 1/4 NE 1/4 a distance of 872.71 feet to the N 1/16 corner on the east line of said Section 19; thence N 00°07'18" E along the east line of the NE 1/4 NE 1/4 of said Section 19 a distance of 64.37 feet to the point of beginning.

AREA OF ANNEXATION

ANNEXATION PERIMETER	2918.90 FT.
CONTIGUOUS PERIMETER	487.30 FT.
AREA IN SQUARE FEET	21738.08
AREA IN ACRES	.50

LEGEND

ANNEXATION BOUNDARY	—————
EXISTING CITY LIMITS	- - - - -

GRAPHIC SCALE



(IN FEET)
1 inch = 300 ft.

ORDINANCE NO.
3297

EFFECTIVE DATE
NOVEMBER 19, 2000

**DEPARTMENT OF PUBLIC WORKS AND UTILITIES
ENGINEERING AND TECHNICAL SERVICES DIVISIONS
CITY OF GRAND JUNCTION, COLORADO**

EPHEMERAL RESOURCES ANNEXATION NO.1
Ephem.dwg

The Description(s) contained herein have been derived from subdivision plats and deed descriptions as they appear in the office of the Mesa County Clerk and Recorder. This constitutes a legal survey, and is not intended to be a means for establishing or verifying property boundaries.

Star R. Pace
SENIOR REAL ESTATE TECHNICIAN, PLS 22580

Notice:
According to Colorado law you have 60 days from the effective date shown hereon to file a complaint based upon any defect on this plat. If no complaint is filed within said 60 days then said plat stands despite all defects and/or errors.

DRAWN BY	SRP	DATE	7-26-2000
DESIGNED BY	_____	DATE	_____
CHECKED BY	_____	DATE	_____
APPROVED BY	_____	DATE	_____

SCALE
1" = 300'