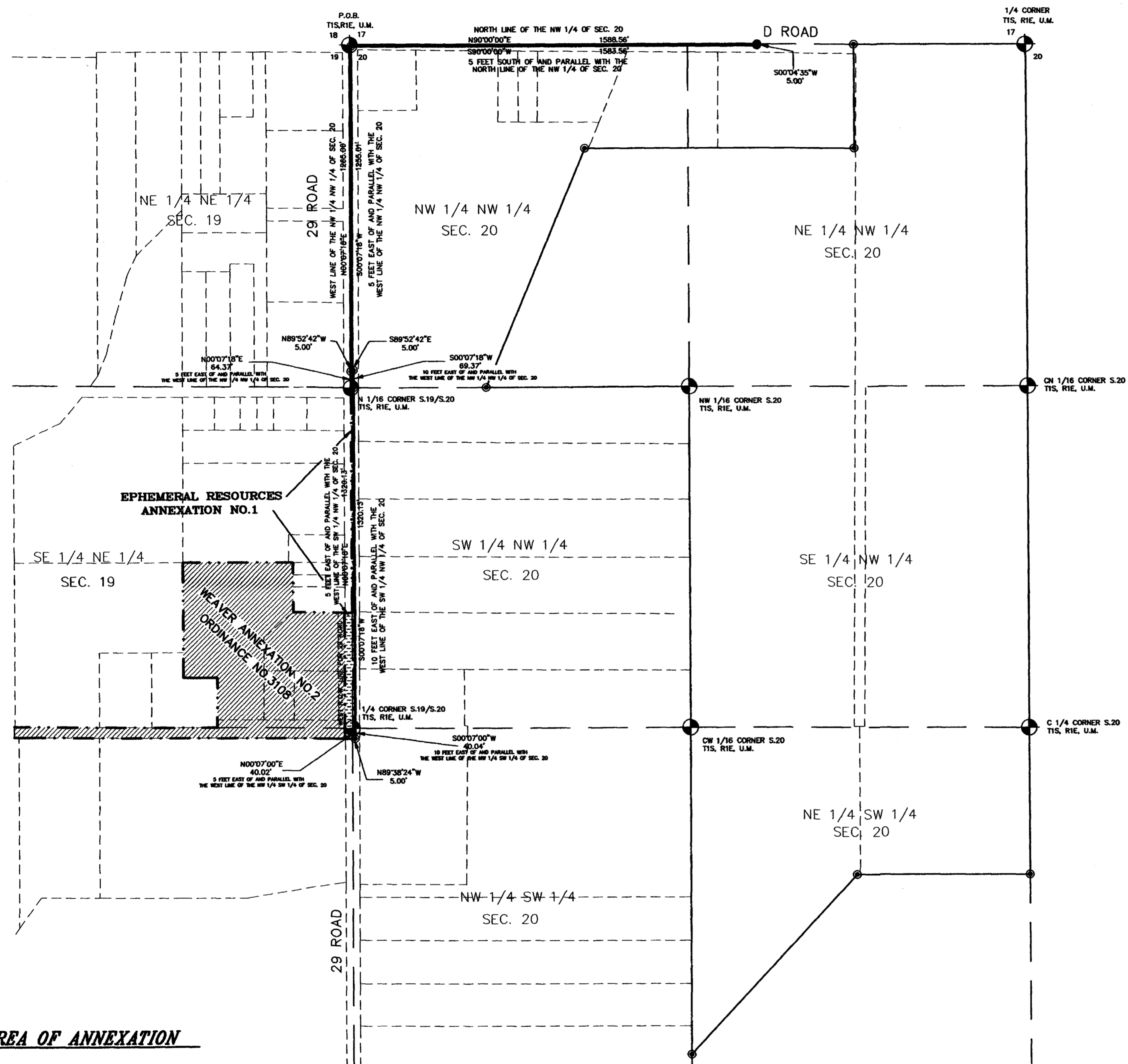
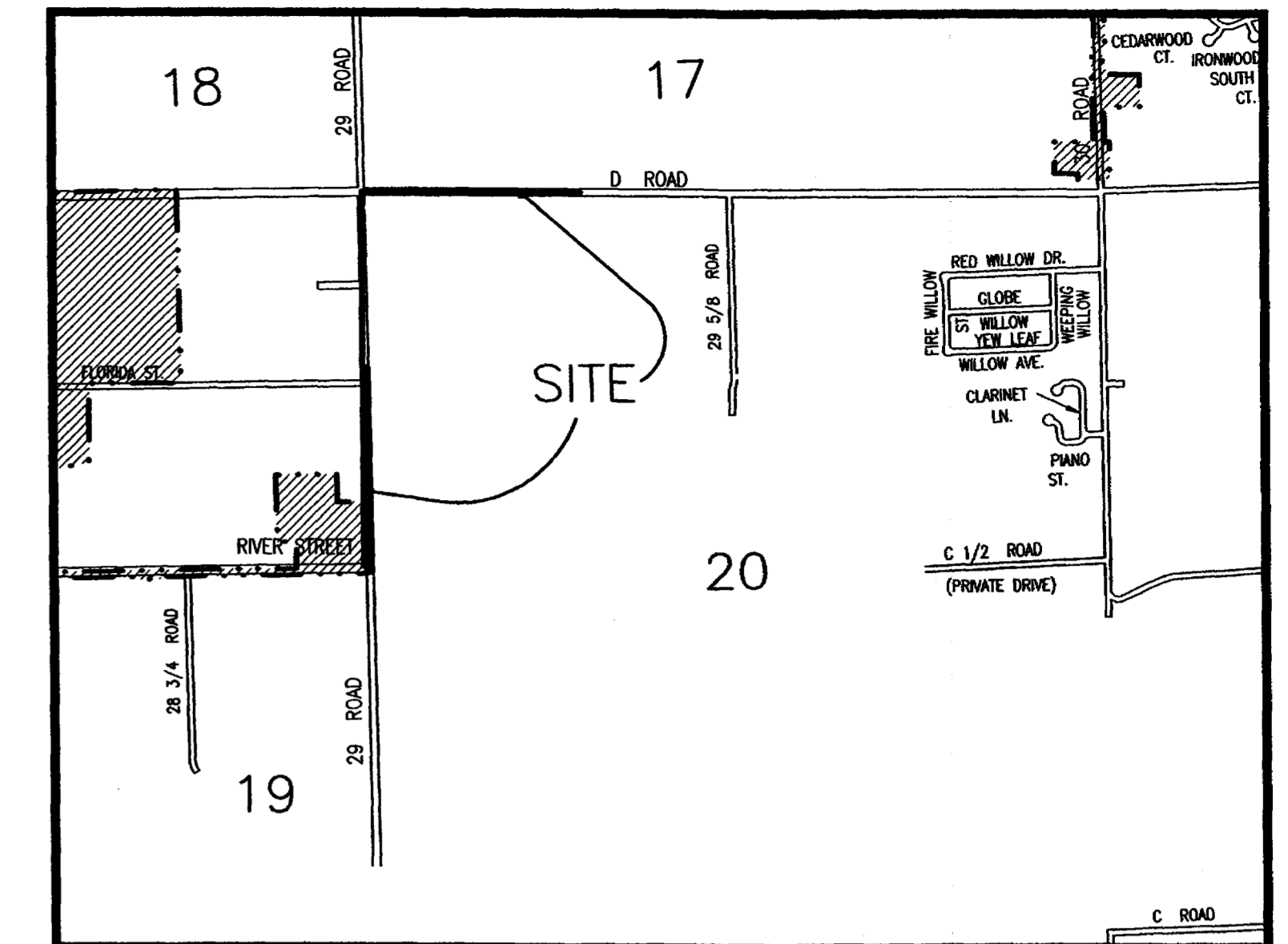


EPHEMERAL RESOURCES ANNEXATION NO. 2

SITUATE IN SECTIONS 20, TOWNSHIP 1 SOUTH, RANGE 1 EAST, U.M.
COUNTY OF MESA, STATE OF COLORADO



LEGAL DESCRIPTION

A parcel of land situate in Section 20, Township 1 South, Range 1 East of the Ute Meridian, County of Mesa, State of Colorado, being more particularly described as follows:

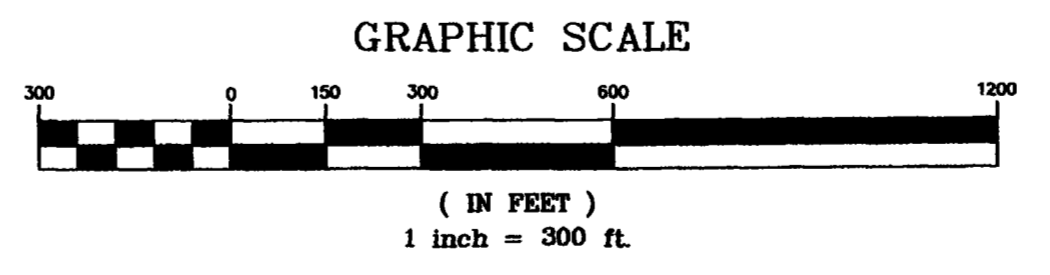
Beginning at the northwest corner of Section 20; thence N 90°00'00" E along the north line of the NW 1/4 of said Section 20 a distance of 1588.56 feet to a point; thence S 00°04'35" W a distance of 5.00 feet to a point; thence S 90°00'00" W along a line 5.00 feet south of and parallel with the north line of the NW 1/4 of said Section 20 a distance of 1583.56 feet to a point; thence S 00°07'18" W along a line 5.00 feet east of and parallel with the west line of the NW 1/4 NW 1/4 of said Section 20 a distance of 1255.01 feet to a point; thence S 89°52'42" E a distance of 5.00 feet to a point; thence S 00°07'18" W along a line 10.00' east of and parallel with the west line of said NW 1/4 NW 1/4 a distance of 69.37 feet to a point on the south line of the NW 1/4 NW 1/4 of said Section 20; thence S 00°07'18" W along a line 10.00 feet east of and parallel with the west line of the SW 1/4 NW 1/4 of said Section 20 a distance of 1320.13 feet to a point on the south line of said SW 1/4 NW 1/4; thence S 00°07'00" W along a line 10.00 feet east of and parallel with the west line of the NW 1/4 SW 1/4 of said Section 20 a distance of 40.04 feet to a point; thence N 89°38'24" W a distance of 5.00 feet to a point; thence N 00°07'00" E along a line 5.00 feet east of and parallel with the west line of said NW 1/4 SW 1/4 a distance of 40.02 feet to a point on the north line of said NW 1/4 SW 1/4; thence N 00°07'18" E along a line 5.00 feet east of and parallel with the west line of the SW 1/4 NW 1/4 of said Section 20 a distance of 1320.13 feet to a point on the north line of said SW 1/4 NW 1/4; thence N 00°07'18" E along a line 5.00 feet east of and parallel with the west line of the NW 1/4 NW 1/4 of said Section 20 a distance of 64.37 feet to a point; thence N 89°52'42" W a distance of 5.00 feet to a point on the west line of said NW 1/4 NW 1/4; thence N 00°07'18" E along the west line of the NW 1/4 NW 1/4 of said Section 20 a distance of 1265.00 feet to the point of beginning.

AREA OF ANNEXATION

ANNEXATION PERIMETER	8566.20 FT.
CONTIGUOUS PERIMETER	1429.52 FT.
AREA IN SQUARE FEET	21390.33
AREA IN ACRES	.49

LEGEND

ANNEXATION BOUNDARY	—————
EXISTING CITY LIMITS	- - - - -



The Description(s) contained herein have been derived from subdivision plats and deed descriptions as they appear in the office of the Mesa County Clerk and Recorder. This constitutes a legal survey, and is not intended to be a means for establishing or verifying property boundaries.

Stan R. Pace
22580
SENIOR REAL ESTATE TECHNICIAN, PLS 22580

ORDINANCE NO.
3298

EFFECTIVE DATE
NOVEMBER 19, 2000

DRAWN BY	SRP	DATE	7-26-2000
DESIGNED BY	_____	DATE	_____
CHECKED BY	_____	DATE	_____
APPROVED BY	_____	DATE	_____

SCALE
1" = 300'

DEPARTMENT OF PUBLIC WORKS AND UTILITIES
ENGINEERING AND TECHNICAL SERVICES DIVISIONS
CITY OF GRAND JUNCTION, COLORADO

EPHEMERAL RESOURCES ANNEXATION NO.2
Ephem2.dwg

Notice: According to Colorado law you have 60 days from the effective date shown herein to file a complaint based upon any defect on this plat. If no complaint is filed within said 60 days then said plat stands despite all defects and/or errors.