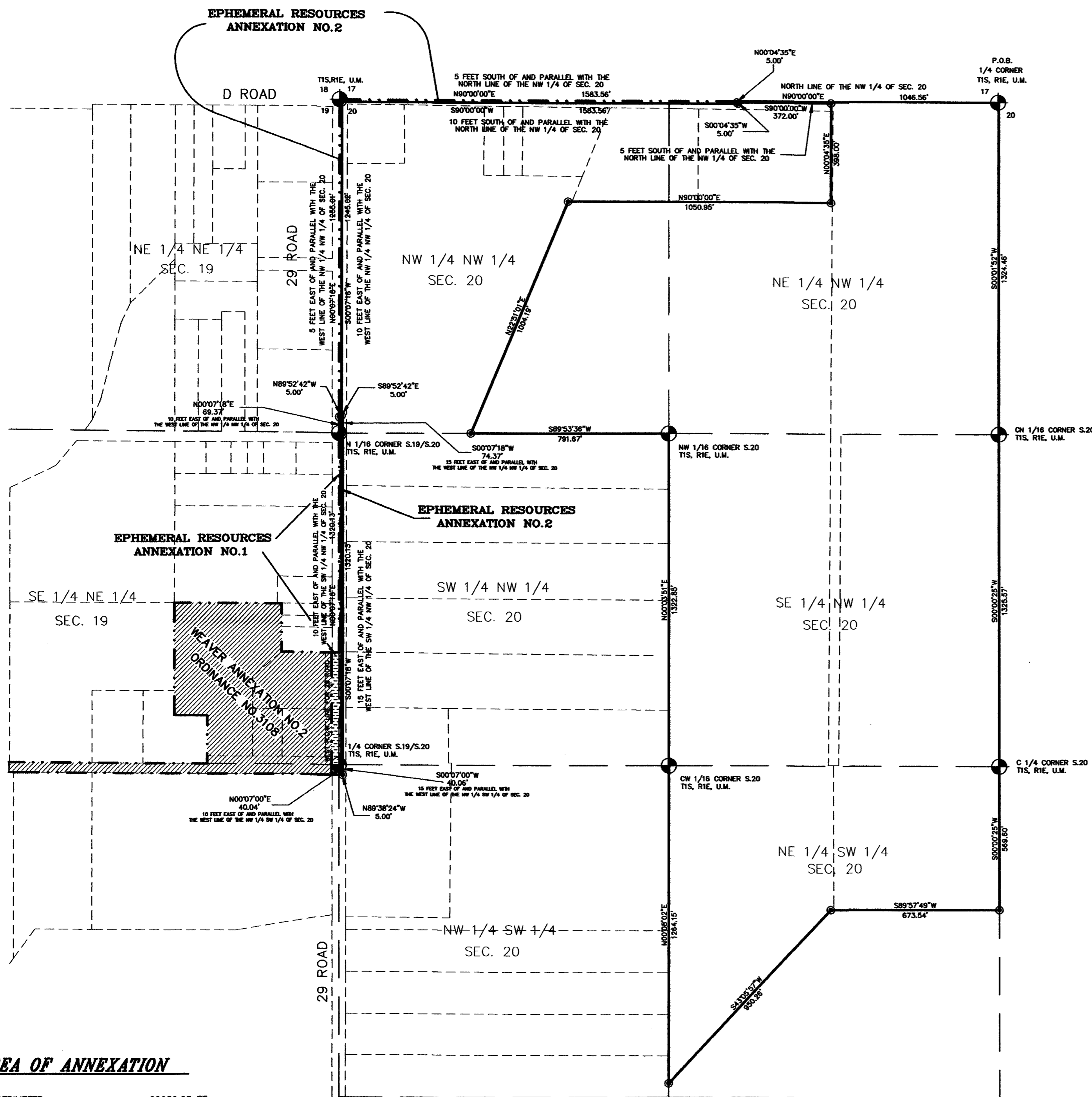
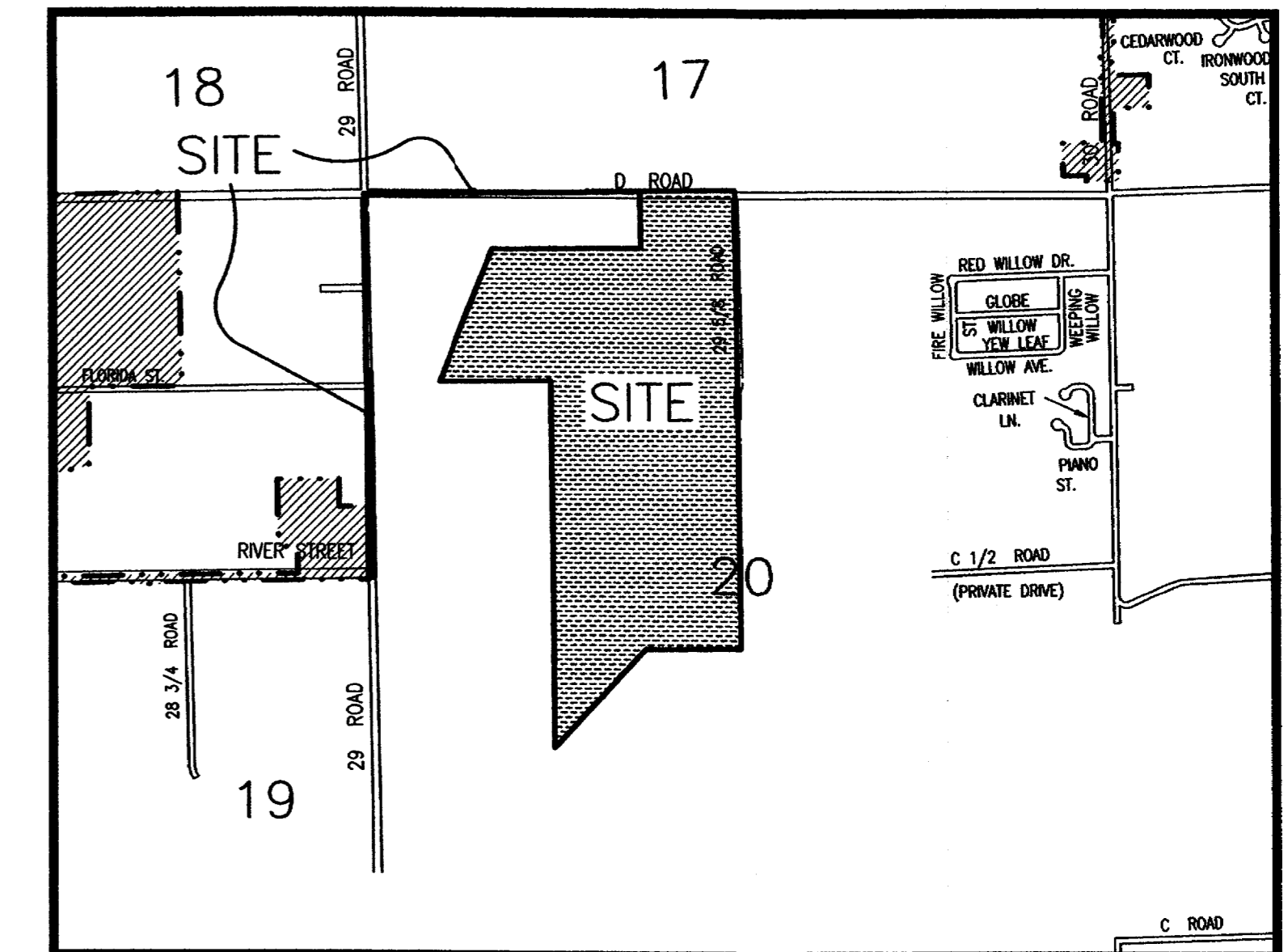


# EPHEMERAL RESOURCES ANNEXATION NO. 3

SITUATE IN SECTIONS 20, TOWNSHIP 1 SOUTH, RANGE 1 EAST, U.M.  
COUNTY OF MESA, STATE OF COLORADO



### LEGAL DESCRIPTION

A parcel of land situate in Section 20, Township 1 South, Range 1 East of the Ute Meridian, County of Mesa, State of Colorado, being more particularly described as follows:

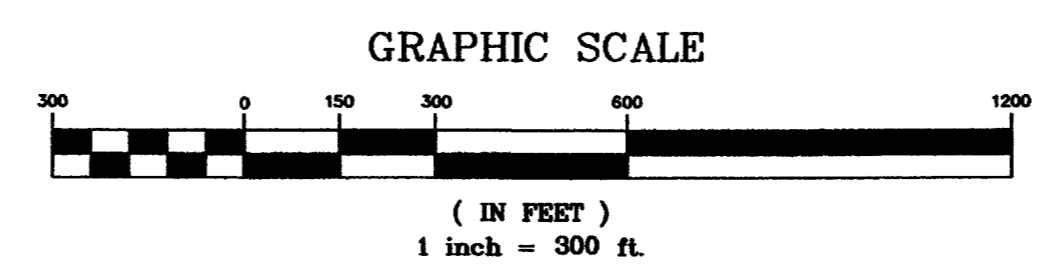
Beginning at the North 1/4 corner of Section 20; thence S 00°01'52" W along the east line of the NE 1/4 NW 1/4 of said Section 20 a distance of 1324.46 feet to the CN 1/16 corner of said Section 20; thence S 00°00'25" W along the east line of the SE 1/4 NW 1/4 of said Section 20 a distance of 1325.57 feet to the C 1/4 corner of said Section 20; thence S 00°00'25" W along the east line of the NE 1/4 SW 1/4 of said Section 20 a distance of 569.60 feet to a point; thence S 89°57'49" W a distance of 673.54 feet to a point; thence S 43°05'57" W a distance of 950.26 feet to a point on the west line of said NE 1/4 SW 1/4; thence N 00°08'02" E along the west line of the NE 1/4 SW 1/4 of said Section 20 a distance of 1264.15 feet to the CW 1/16 corner of said Section 20; thence N 00°03'51" E along the west line of the SE 1/4 NW 1/4 of said Section 20 a distance of 1322.85 feet to the NW 1/16 corner of said Section 20; thence S 89°53'36" W along the south line of the NW 1/4 NW 1/4 of said Section 20 a distance of 791.67 feet to a point; thence N 22°51'01" E a distance of 1004.19 feet to a point; thence N 90°00'00" E a distance of 1050.95 feet to a point; thence N 00°04'35" E a distance of 398.00 feet to a point 5 feet south of the north line of the NW 1/4 of said Section 20; thence S 90°00'00" W along a line 5 feet south of and parallel with the north line of said NW 1/4 a distance of 372.00 feet to a point; thence S 00°04'35" W a distance of 5.00 feet to a point; thence S 90°00'00" W along a line 10 feet south of and parallel with the north line of the NW 1/4 of said Section 20 a distance of 1583.56 feet to a point; thence S 00°07'18" W along a line 10 feet east of and parallel with the west line of the NW 1/4 NW 1/4 of said Section 20 a distance of 1245.02 feet to a point; thence S 89°52'42" E a distance of 5.00 feet to a point; thence S 00°07'18" W along a line 15 feet east of and parallel with the west line of the NW 1/4 NW 1/4 of said Section 20 a distance of 74.37 feet to a point on the south line of said NW 1/4 NW 1/4; thence S 00°07'18" W along a line 15 feet east of and parallel with the west line of the SW 1/4 NW 1/4 of said Section 20 a distance of 1320.13 feet to a point on the south line of said NW 1/4 NW 1/4; thence S 00°07'00" W along a line 15 feet east of and parallel with the west line of the NW 1/4 SW 1/4 of said Section 20 a distance of 40.06 feet to a point; thence N 89°38'24" W a distance of 5.00 feet to a point; thence N 00°07'00" E along a line 10 feet east of and parallel with the west line of said NW 1/4 SW 1/4 a distance of 40.04 feet to a point on the north line of the NW 1/4 SW 1/4 of said Section 20; thence N 00°07'18" E along a line 10 feet east of and parallel with the west line of the SW 1/4 NW 1/4 of said Section 20 a distance of 1320.13 feet to a point on the north line of said SW 1/4 NW 1/4; thence N 00°07'18" E along a line 10 feet east of and parallel with the west line of the NW 1/4 NW 1/4 of said Section 20 a distance of 69.37 feet to a point; thence N 89°52'42" W a distance of 5.00 feet to a point; thence N 00°07'18" E along a line 5 feet east of and parallel with the west line of said NW 1/4 NW 1/4 a distance of 1255.01 feet to a point; thence N 90°00'00" E along a line 5 feet south of and parallel with the north line of the NW 1/4 of said Section 20 a distance of 1583.56 feet to a point; thence N 00°04'35" E a distance of 5.00 feet to a point on the north line of the NW 1/4 of said Section 20; thence N 90°00'00" E along the north line of said NW 1/4 a distance of 1046.56 feet to the point of beginning.

### AREA OF ANNEXATION

ANNEXATION PERIMETER	20650.05 FT.
CONTIGUOUS PERIMETER	4278.11 FT.
AREA IN SQUARE FEET	4786098.50
AREA IN ACRES	109.87

### LEGEND

ANNEXATION BOUNDARY	—————
EXISTING CITY LIMITS	- - - - -



The Description(s) contained herein have been derived from subdivision plats and deed descriptions as they appear in the office of the Mesa County Clerk and Recorder. This constitutes a legal survey, and is not intended to be a means for establishing or verifying property boundaries.

*Stan R. Pico*  
SENIOR REAL ESTATE TECHNICIAN, PLS 22580

**ORDINANCE NO.**  
**3299**

**EFFECTIVE DATE**  
**NOVEMBER 19, 2000**

**DEPARTMENT OF PUBLIC WORKS AND UTILITIES**  
**ENGINEERING AND TECHNICAL SERVICES DIVISIONS**  
**CITY OF GRAND JUNCTION, COLORADO**

**EPHEMERAL RESOURCES ANNEXATION NO.3**  
Ephem3.dwg

**Notice:**  
According to Colorado law you have 60 days from the effective date shown hereon to file a complaint based upon any defect on this plat. If no complaint is filed within said 60 days then said plat stands despite all defects and/or errors.

DRAWN BY	SRP	DATE	7-26-2000
DESIGNED BY		DATE	
CHECKED BY		DATE	
APPROVED BY		DATE	

SCALE  
1" = 300'