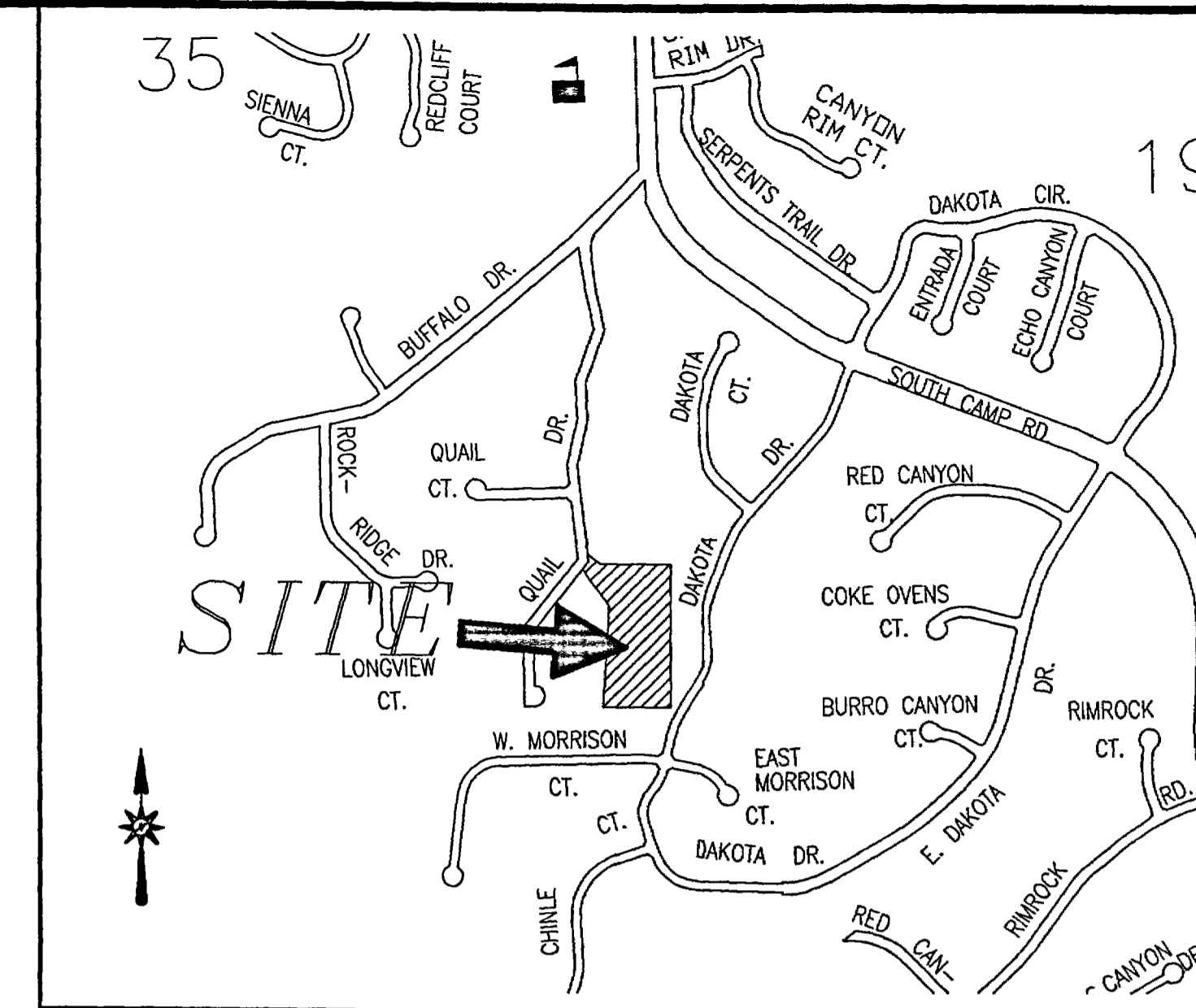


GERICK ANNEXATION

LOT 12 OF LONGVIEW EAST SUBDIVISION (PLAT BOOK 13, PAGE 391)
SITUATE IN TRACT 39 OF SECTION 35, T11S, R101W, 6th PRINCIPAL MERIDIAN
COUNTY OF MESA, STATE OF COLORADO



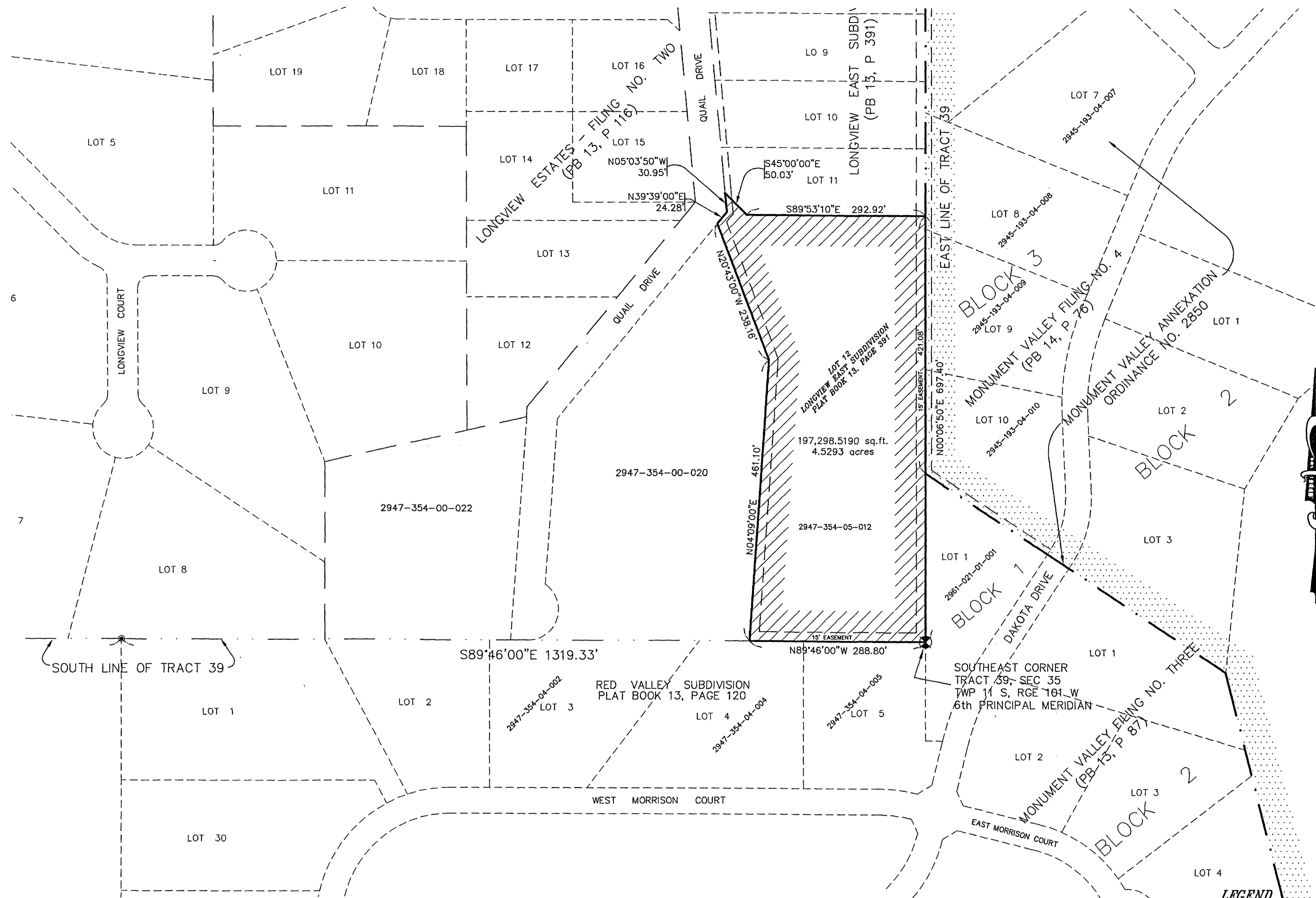
VICINITY MAP (NOT TO SCALE)

Legal Description

A certain parcel of land lying in Tract 39 of Section 35, Township 11 South, Range 101 West of the 6th Principal Meridian, County of Mesa, State of Colorado, being more particularly described as follows:

Lot 12, Longview East Subdivision, as same is recorded in Plat Book 13, Page 391, Public Records of Mesa County, Colorado

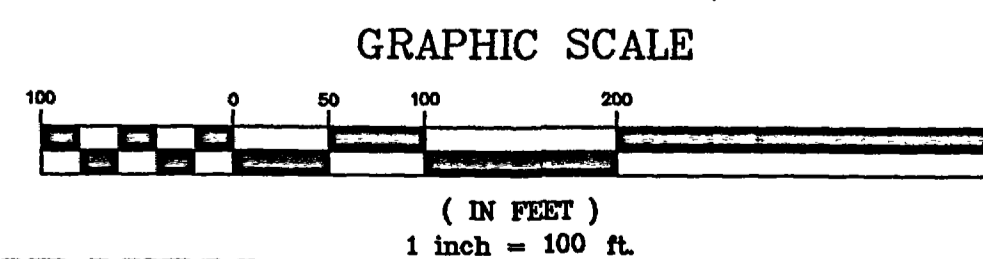
Contains 4.5293 Acres (197,298.52 Square Feet), more or less, as described



AREA OF ANNEXATION

ANNEXATION PERIMETER 2083.64 FT.
CONTIGUOUS PERIMETER 276.32 FT.
AREA IN SQUARE FEET 197,298.52
AREA IN ACRES 4.5293

ORDINANCE NO. 3452
EFFECTIVE DATE October 20, 2002



ANNEXATION BOUNDARY
EXISTING CITY LIMITS
SECTION OR ALIQUOT CORNER
ANGLE POINT

THIS IS NOT A BOUNDARY SURVEY

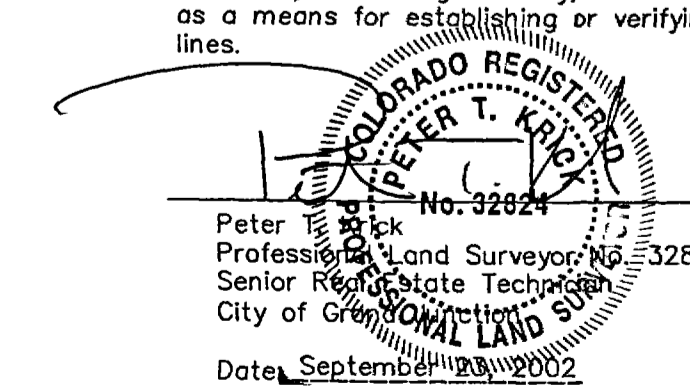
DRAWN BY PTK DATE 7-16-2002
DESIGNED BY DATE
CHECKED BY TW DATE
APPROVED BY DATE

SCALE
1" = 100'

DEPARTMENT OF PUBLIC WORKS AND UTILITIES
ENGINEERING AND TECHNICAL SERVICES DIVISIONS
CITY OF GRAND JUNCTION, COLORADO

GERICK ANNEXATION

The Description contained herein has been derived from subdivision plats and deed descriptions as they appear in the office of the Mesa County Clerk and Recorder. This plat does not constitute a legal survey, and is not intended to be used as a means for establishing or verifying property boundary lines.



Notice:
According to Colorado law you have 60 days from the effective date shown herein to file a complaint based upon any defect on this plat. If no complaint is filed within said 60 days then said plat stands despite all defects and or errors.