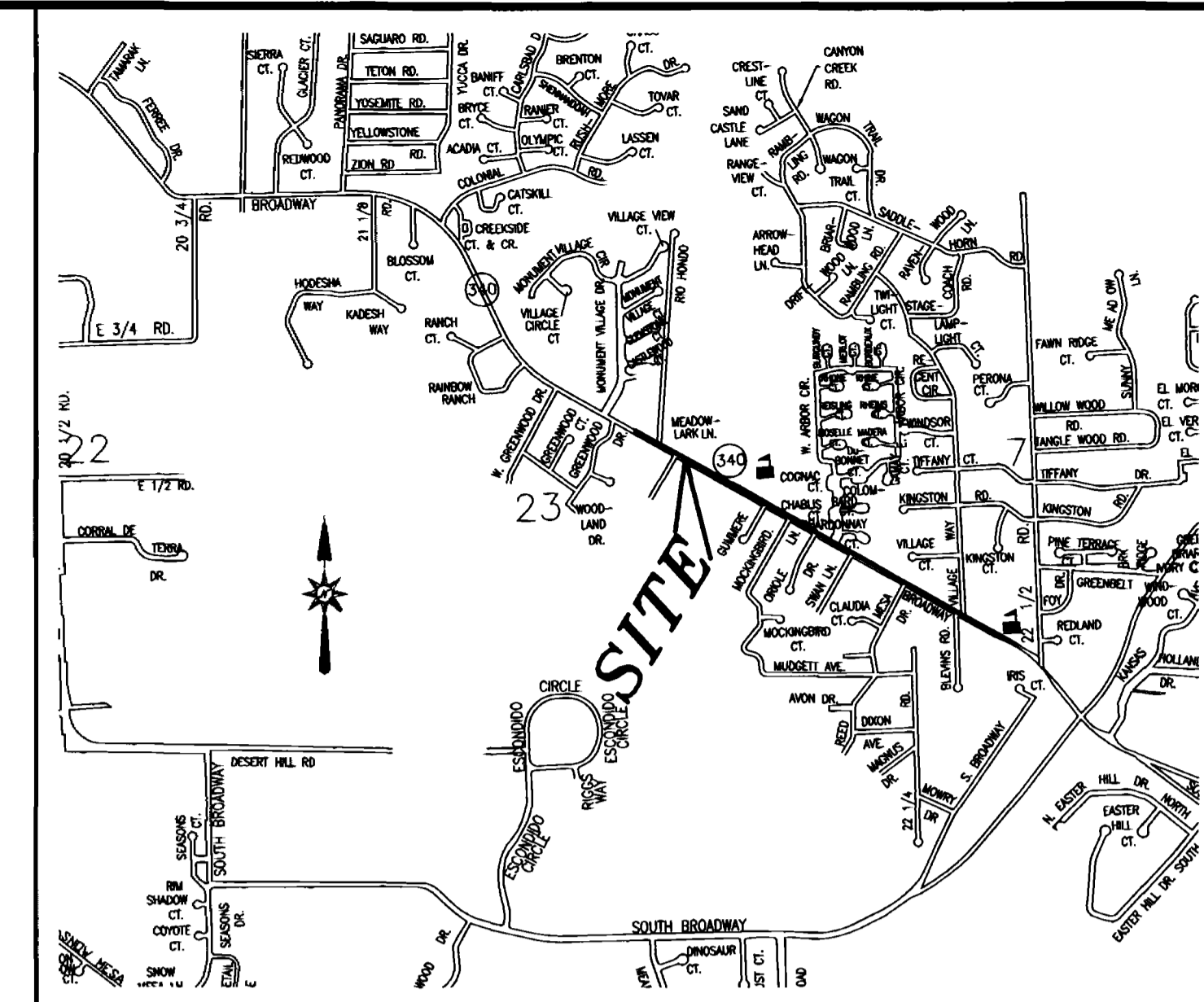
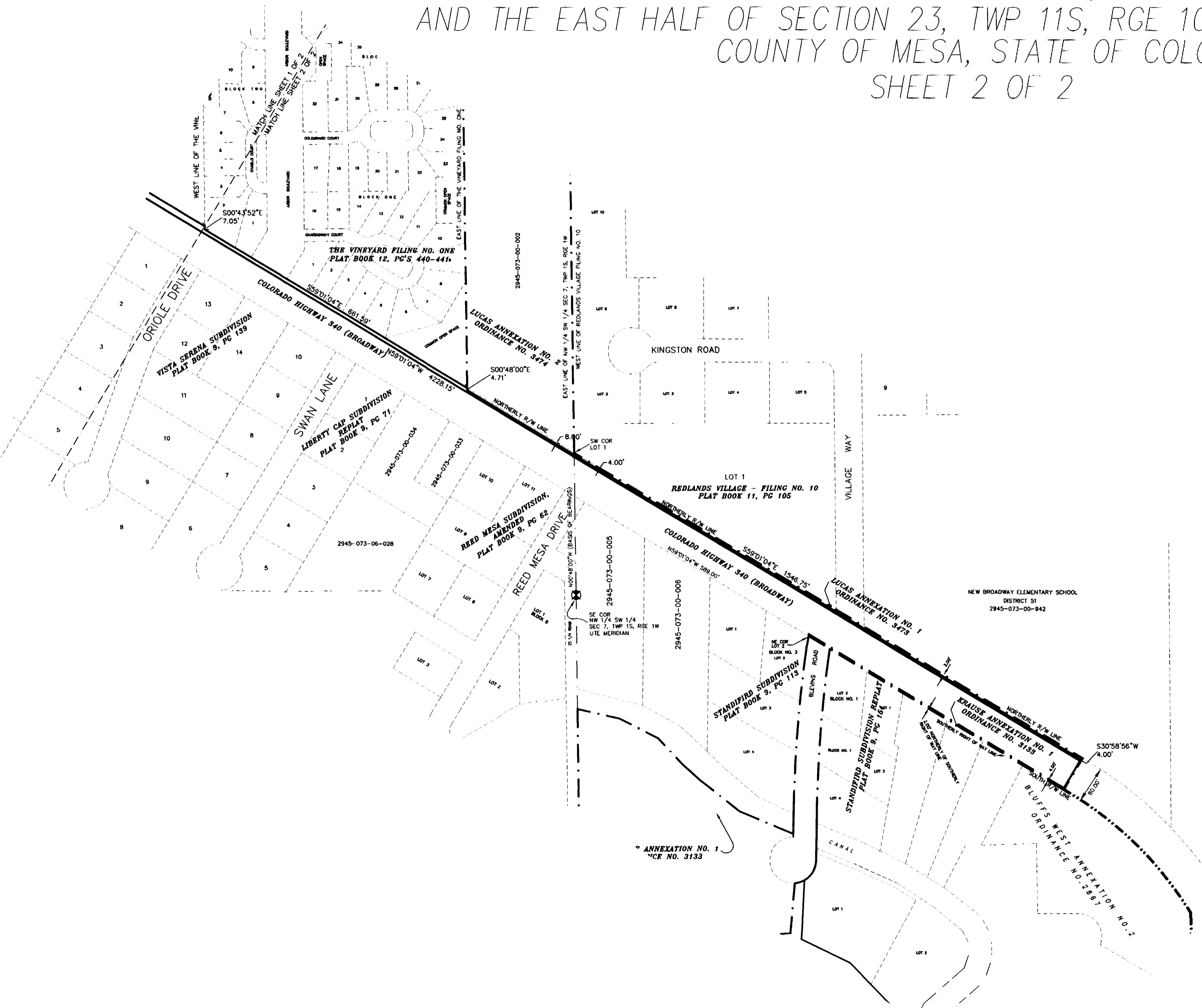


WESTGATE FREE WILL BAPTIST CHURCH ANNEXATION NO. 1

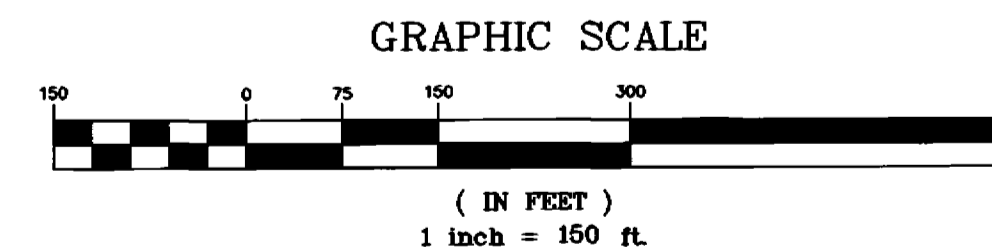
SITUATE IN THE WEST HALF OF SECTION 7, TWP 1S, RGE 1W, UTE MERIDIAN
AND THE EAST HALF OF SECTION 23, TWP 11S, RGE 101W, 6th PRINCIPAL MERIDIAN
COUNTY OF MESA, STATE OF COLORADO
SHEET 2 OF 2



VICINITY MAP (NOT TO SCALE)



SEE SHEET 1 OF 2 FOR LEGAL DESCRIPTION



AREA OF ANNEXATION

ANNEXATION PERIMETER	8,506.12 FT.
CONTIGUOUS PERIMETER	1,551.46 FT.
AREA IN SQUARE FEET	34,441.88**
AREA IN ACRES	0.7907

** 34,441.88 Sq. Ft. within Highway 340 R/W

ORDINANCE NO.	EFFECTIVE DATE
3553	September 7th, 2003

THIS IS NOT A BOUNDARY SURVEY

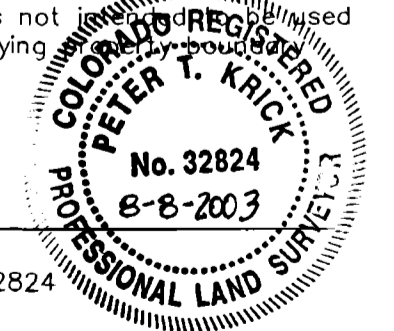
LEGEND

ANNEXATION BOUNDARY	—————
EXISTING CITY LIMITS	- - - - -

The Description contained herein has been derived from subdivision plats and deed descriptions as they appear in the office of the Mesa County Clerk and Recorder. It does not constitute a legal survey, and is not intended to be used as a means for establishing or verifying boundaries.

Peter T. Krick
Peter T. Krick
Professional Land Surveyor No. 32824
City of Grand Junction

Date: August 8th, 2003



DRAWN BY	PTK	DATE	10-22-2002
DESIGNED BY	PTK	DATE	
CHECKED BY	TW	DATE	
APPROVED BY		DATE	

SCALE

1" = 150'

DEPARTMENT OF PUBLIC WORKS AND UTILITIES
REAL ESTATE DIVISION
CITY OF GRAND JUNCTION, COLORADO

WESTGATE FREE WILL BAPTIST CHURCH
ANNEXATION NO. 1