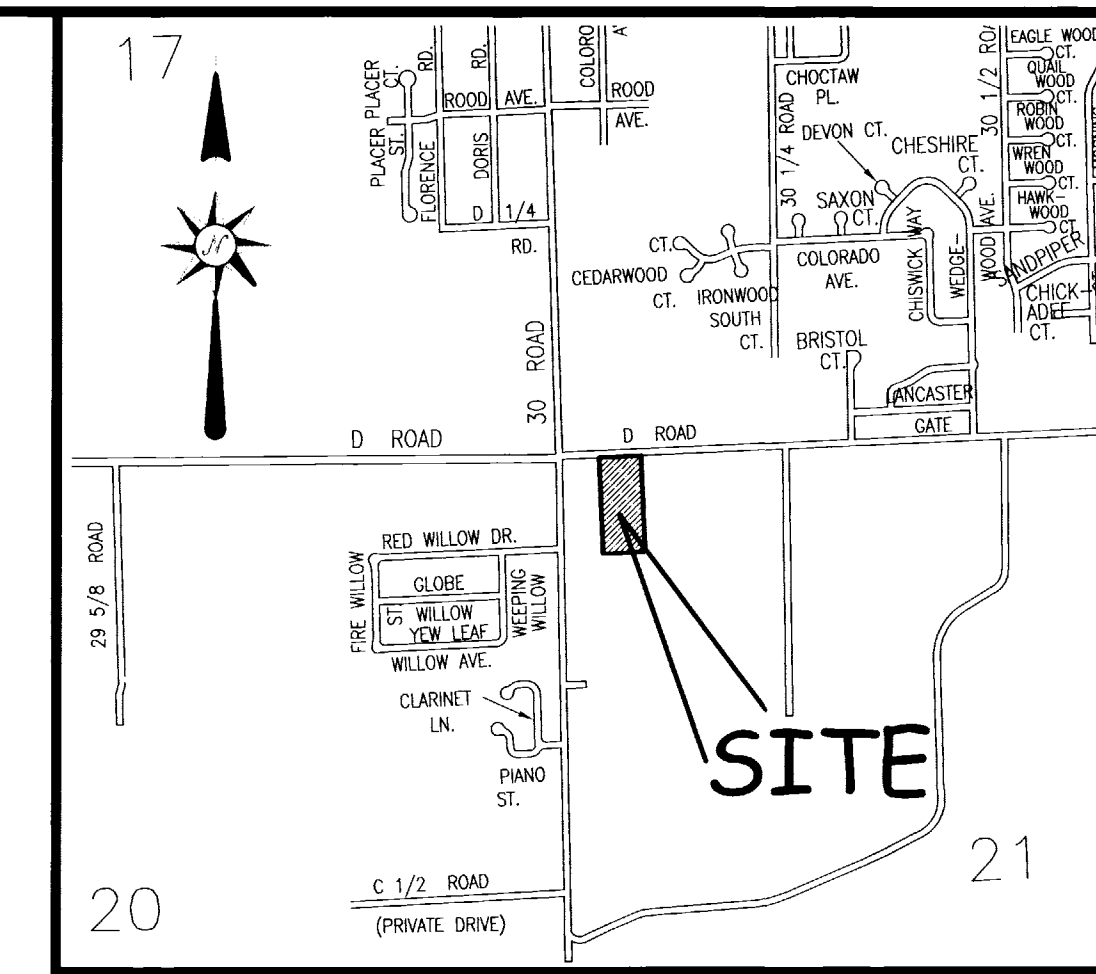


LANDMARK BAPTIST CHURCH ANNEXATION

SITUATE IN THE NW 1/4 OF THE NW 1/4 OF THE NW 1/4 OF SECTION 21, TWP 1S, RGE 1E, U.M.
COUNTY OF MESA, STATE OF COLORADO



LOCATION MAP: NOT-TO-SCALE

LEGAL DESCRIPTION

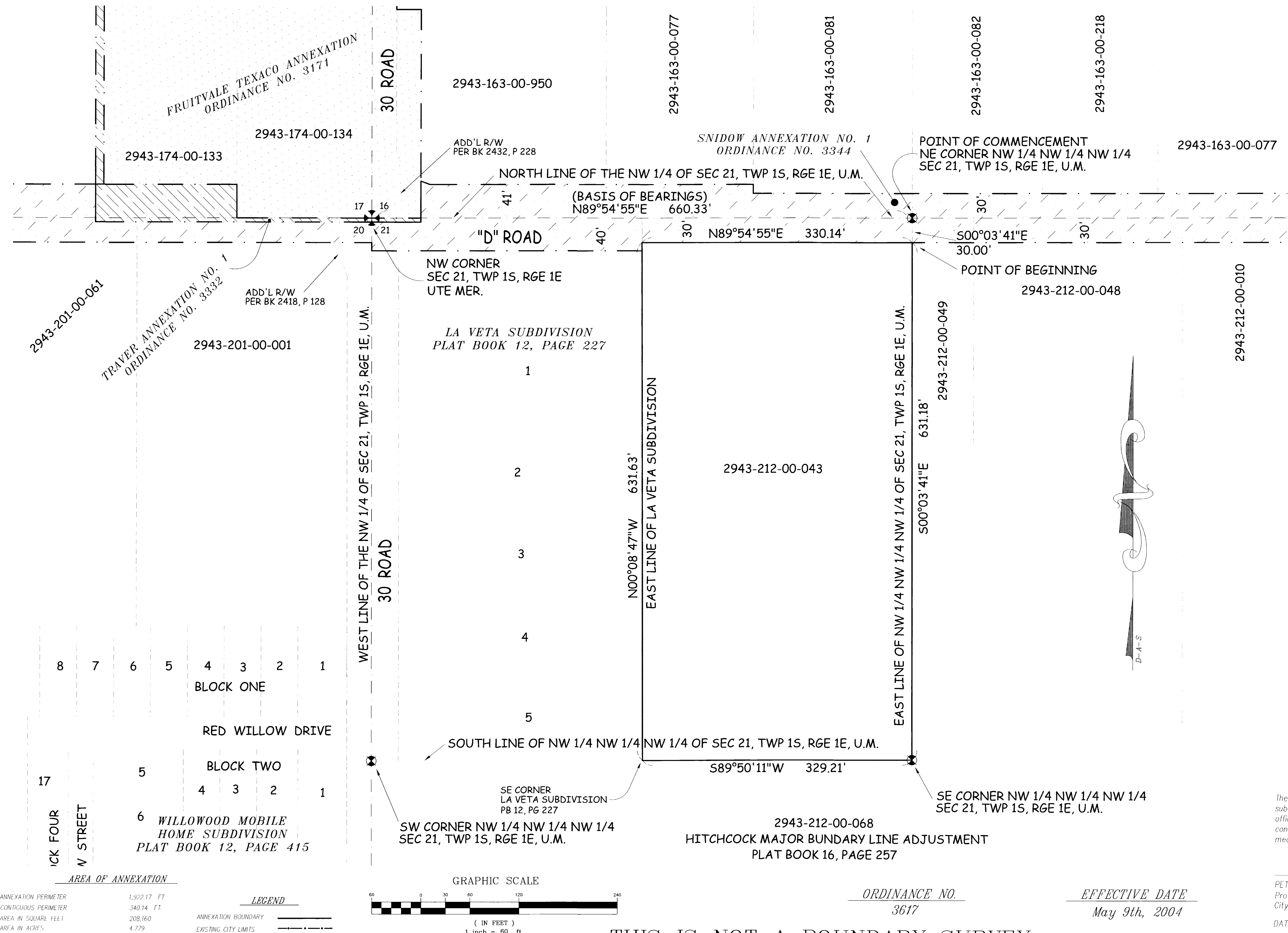
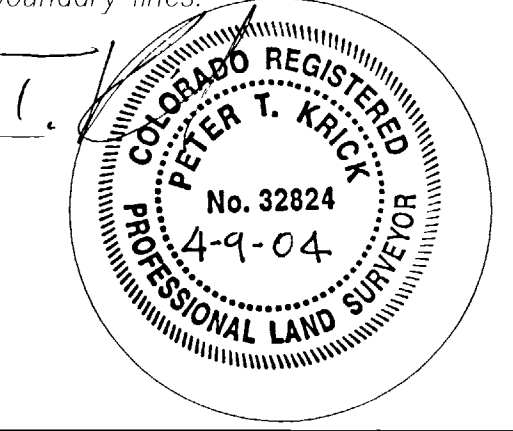
A certain parcel of land lying in the Northwest Quarter of the Northwest Quarter of the Northwest Quarter (NW 1/4 NW 1/4 NW 1/4) of Section 21, Township 1 South, Range 1 East of the Ute Principal Meridian, County of Mesa, State of Colorado and being more particularly described as follows:

COMMENCING at the Northeast corner of the NW 1/4 NW 1/4 NW 1/4 of said Section 21 and assuming the North line of the Northwest Quarter (NW 1/4) of said Section 21 bears N 89°54'55" E with all other bearings contained herein being relative thereto; thence from said Point of Commencement, S 00°03'41" E along the East line of the NW 1/4 NW 1/4 NW 1/4 of said Section 21 a distance of 30.00 feet to the POINT OF BEGINNING; thence from said Point of Beginning, continue S 00°03'41" E along the East line of the NW 1/4 NW 1/4 NW 1/4 of said Section 21 a distance of 631.18 feet, more or less, to a point on the North line of the Hitchcock Major Boundary Line Adjustment, as recorded in Plat Book 16, Page 257, Public Records of Mesa County, Colorado and being the Southeast corner of the NW 1/4 NW 1/4 NW 1/4 of said Section 21; thence S 89°50'11" W along the South line of the NW 1/4 NW 1/4 NW 1/4 of said Section 21 and the North line of said Hitchcock Major Boundary Line Adjustment, a distance of 329.21 feet, more or less, to a point being the Southeast corner of La Veta Subdivision, as same is recorded in Plat Book 12, Page 227, Public Records of Mesa County, Colorado; thence N 00°08'47" W along the East line of said La Veta Subdivision, a distance of 631.63 feet, more or less, to a point on a line 30.00 feet South of and parallel to, the North line of the NW 1/4 of said Section 21; thence N 89°54'55" E along said parallel line, a distance of 330.14 feet, more or less, to the Point of Beginning.

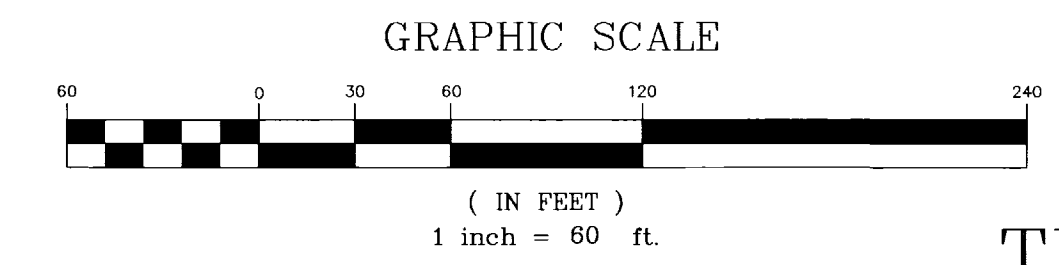
CONTAINING 4.779 Acres (208,160 Sq. Ft.), more or less, as described.

The Description(s) contained herein have been derived from subdivision plats and deed descriptions as they appear in the office of the Mesa County Clerk and Recorder. This plat does not constitute a legal survey, and is not intended to be used as a means for establishing or verifying property boundary lines.

PETER T. KRICK, PLS No. 32824
Professional Land Surveyor for the
City of Grand Junction
DATE: April 9th, 2004



AREA OF ANNEXATION	
ANNEXATION PERIMETER	1,922.17 FT
CONTIGUOUS PERIMETER	340.14 FT
AREA IN SQUARE FEET	208,160
AREA IN ACRES	4.779



ORDINANCE NO. 3617
EFFECTIVE DATE May 9th, 2004

THIS IS NOT A BOUNDARY SURVEY

N:\Cadd\Annex by PTK\Landmark Baptist Annex.dwg 4/9/2004 2:32:28 PM MDT

Notice:
According to Colorado law you must commence any legal action based upon any defect in this survey within three years after you first discover such defect. In no event may any action based upon any defect in this survey be commenced more than ten years from the date of the certification shown hereon.

DRAWN BY P.T.K. DATE 01-27-2004
DESIGNED BY DATE
CHECKED BY T.W. DATE
APPROVED BY DATE

SCALE
1" = 60'



PUBLIC WORKS AND UTILITIES
REAL ESTATE DIVISION

LANDMARK BAPTIST CHURCH ANNEXATION