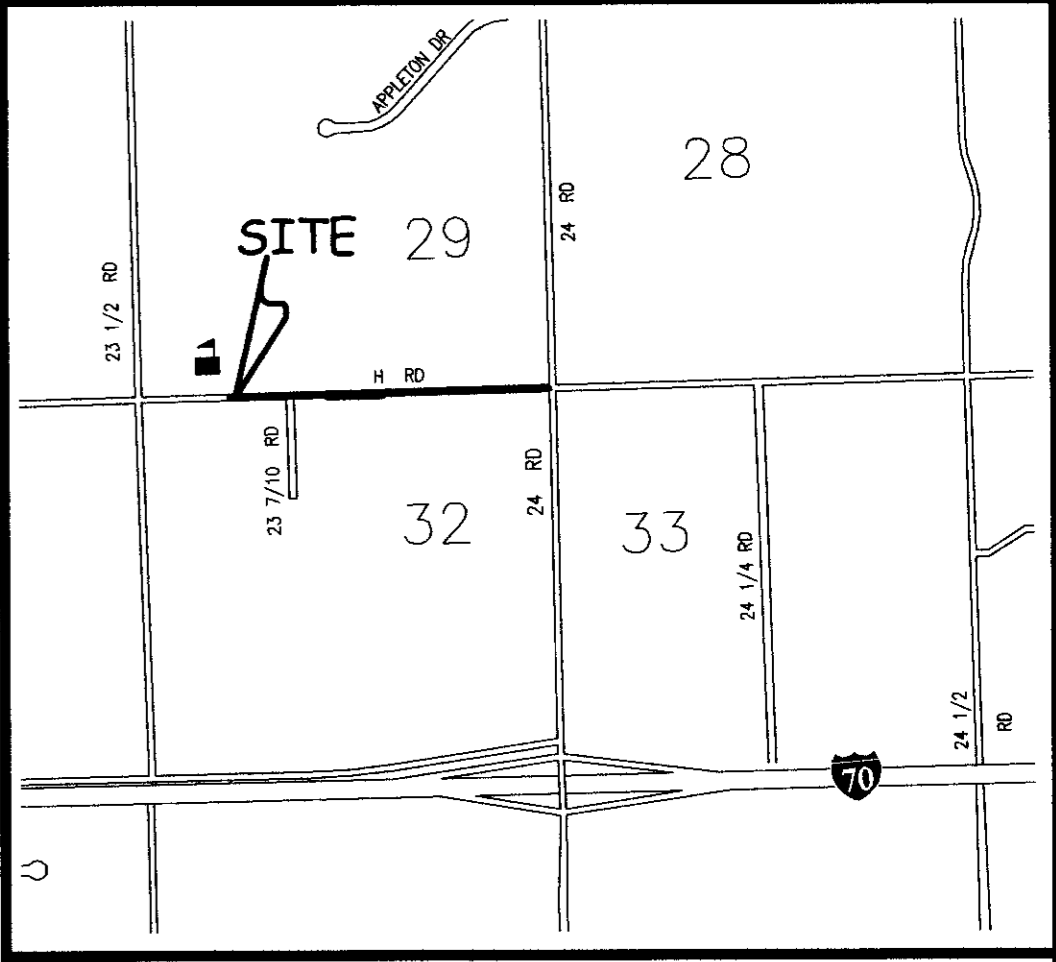


APPLE GLEN ANNEXATION NO. 2

SITUATE IN THE NE 1/4 OF SECTION 32, TWP 1N, RGE 1W, U.M.
COUNTY OF MESA, STATE OF COLORADO



DESCRIPTION

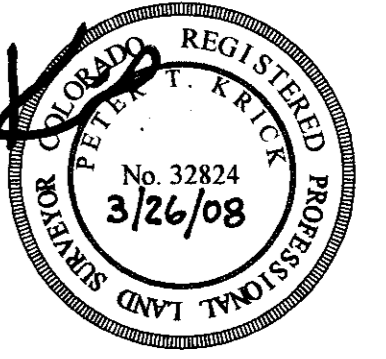
A certain parcel of land lying in the Northeast Quarter of the Northeast Quarter (NE 1/4 NE 1/4) and the Northwest Quarter of the Northeast Quarter (NW 1/4 NE 1/4) of Section 32, Township 1 North, Range 1 West of the Ute Principal Meridian, County of Mesa, State of Colorado and being more particularly described as follows:

BEGINNING at the Northeast corner of said Section 32 and assuming the North line of the NE 1/4 NE 1/4 of said Section 32 bears S 89°58'27" E with all other bearings contained herein being relative thereto; thence from said Point of Beginning, S 00°02'59" W along the East line of the NE 1/4 NE 1/4 of said Section 32, a distance of 15.00 feet; thence N 89°58'27" W along a line 15.00 feet South of and parallel with the North line of the NE 1/4 NE 1/4 of said Section 32, a distance of 945.01 feet; thence S 00°01'33" W a distance of 15.00 feet; thence N 89°58'27" W along the South right of way for H Road, being a line 30.00 feet South of and parallel with the North line of the NE 1/4 NE 1/4 of said Section 32, a distance of 372.77 feet to a point on the West line of the NE 1/4 NE 1/4 of said Section 32; thence N 00°03'26" E along the West line of the NE 1/4 NE 1/4 of said Section 32, a distance of 25.00 feet; thence N 89°57'52" W along a line 5.00 feet South of and parallel with the North line of the NW 1/4 NE 1/4 of said Section 32, a distance of 658.88 feet; thence N 00°01'45" E a distance of 5.00 feet to a point on the North line of the NW 1/4 NE 1/4 of said Section 32; thence S 89°57'52" E along the North line of the NW 1/4 NE 1/4 of said Section 32, a distance of 658.88 feet to a point on the East line of the NW 1/4 NE 1/4 of said Section 32; thence S 89°58'27" E along the North line of the NE 1/4 NE 1/4 of said Section 32, a distance of 1317.77 feet, more or less, to the Point of Beginning.

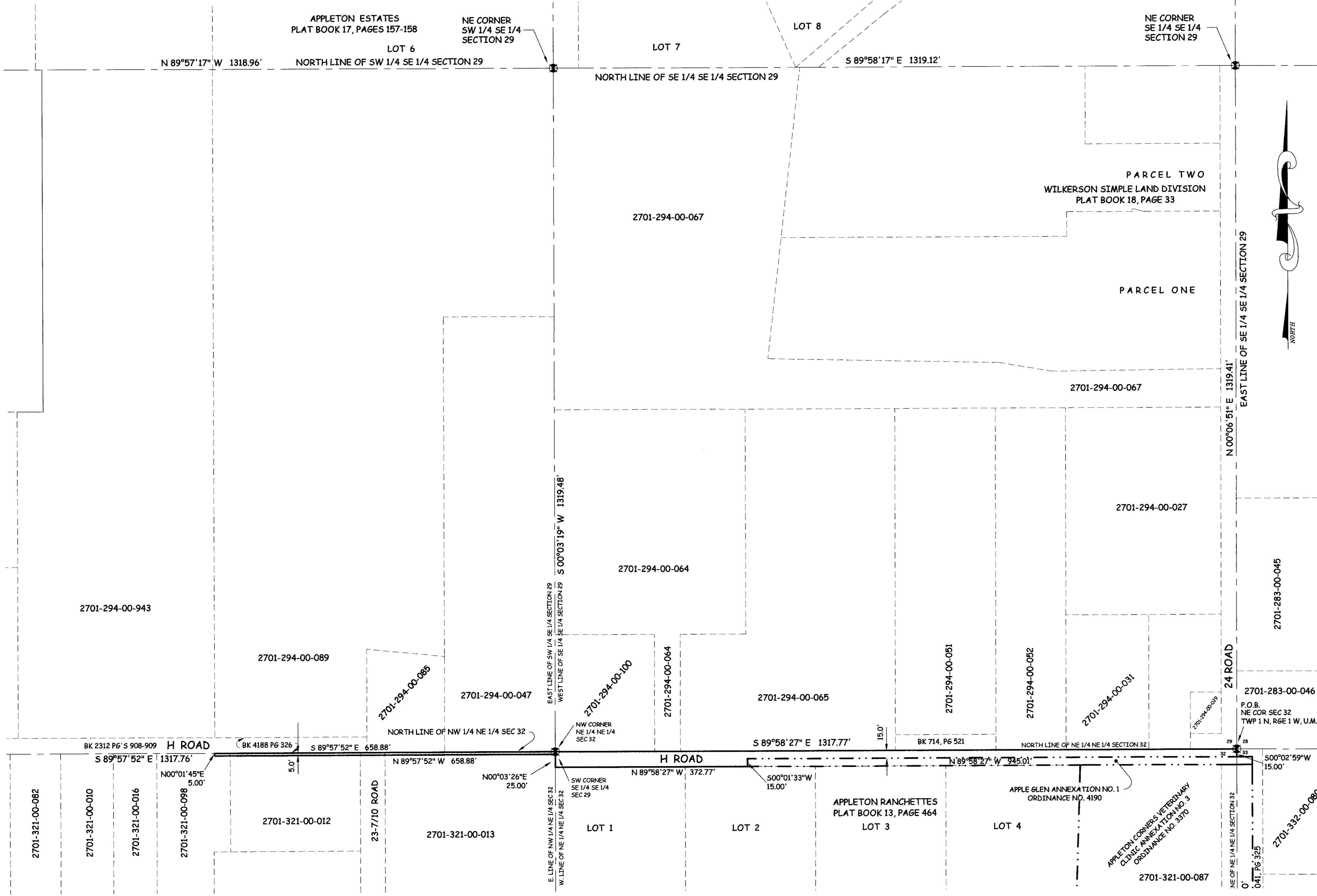
ABBREVIATIONS

P.O.C.	POINT OF COMMENCEMENT
P.O.B.	POINT OF BEGINNING
R.O.W.	RIGHT OF WAY
SEC.	SECTION
TWP.	TOWNSHIP
RGE.	RANGE
U.M.	UTE MERIDIAN
NO.	NUMBER
SQ. FT.	SQUARE FEET
Δ	CENTRAL ANGLE
RAD	RADIUS
AL	ARC LENGTH
CHL	CHORD LENGTH
CHB	CHORD BEARING
BLK	BLOCK
PB	PLAT BOOK
BK	BOOK
PG	PAGE

The Description(s) contained herein have been derived from subdivision plats and deed descriptions as they appear in the office of the Mesa County Clerk and Recorder. This plat does not constitute a legal survey, and is not intended to be used as a means for establishing or verifying property boundary lines.



PETER T. KRICK, PLS No. 32824
Professional Land Surveyor for the
City of Grand Junction
DATE: March 26th, 2008



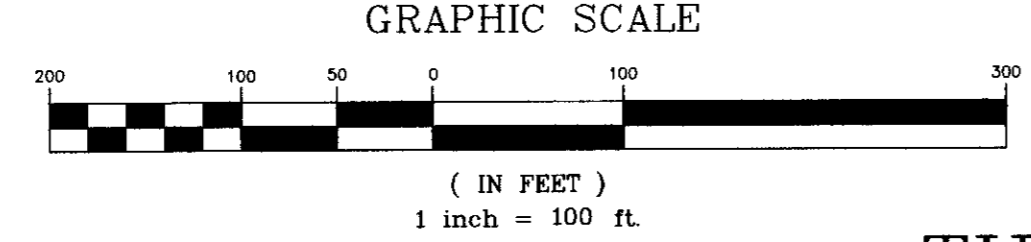
AREA OF ANNEXATION

ANNEXATION PERIMETER	4,013.30 FT
CONTIGUOUS PERIMETER	960.01 FT.
AREA IN SQUARE FEET	28,652***
AREA IN ACRES	0.66

***CONTAINS 28,652 SQUARE FEET WITHIN PUBLIC RIGHTS OF WAY

LEGEND

ANNEXATION BOUNDARY	———
EXISTING CITY LIMITS	- - - - -



ORDINANCE NO. 4191
EFFECTIVE DATE April 18th, 2008

THIS IS NOT A BOUNDARY SURVEY

DRAWN BY	P.T.K.	DATE	10-22-07
DESIGNED BY	_____	DATE	_____
CHECKED BY	P.T.K.	DATE	_____
APPROVED BY	_____	DATE	_____

SCALE
1" = 100'



PUBLIC WORKS AND UTILITIES REAL ESTATE DIVISION

APPLE GLEN ANNEXATION NO. 2