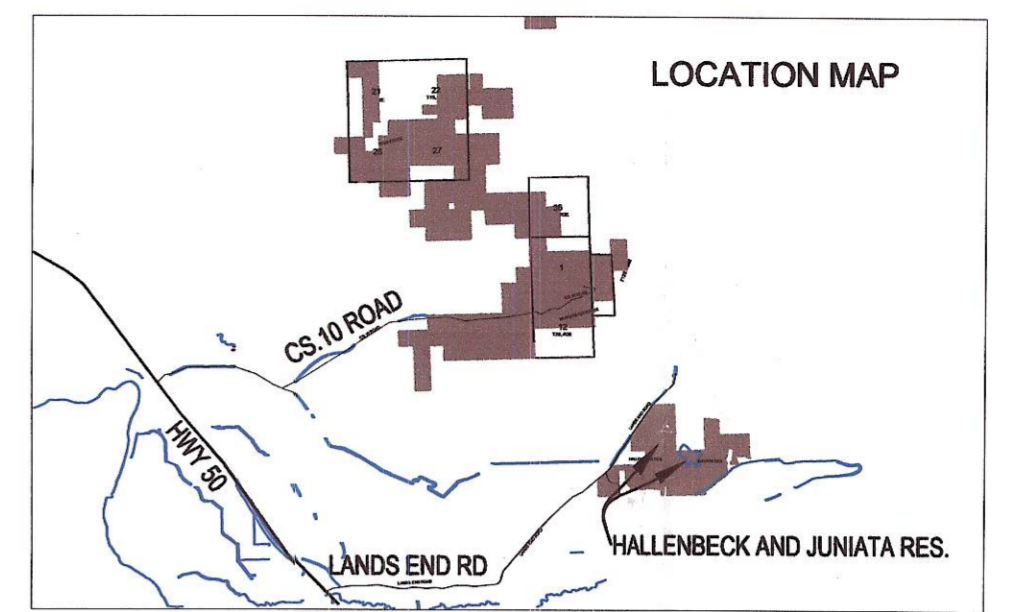


- add water with owned properties
- coal
- other prop's on map
- BLM mineral rights ~ 1999 (see map)
- add air photos



- ◆ T1S, R2E, S21 - 200 ACRES
- ◆ T1S, R2E, S22 - 300 ACRES
- ◆ T1S, R2E, S27 - 120 ACRES
- ◆ T1S, R2E, S28 - 80 ACRES
- ◆ T1S, R2E, S36 - 80 ACRES
- TOTAL FOR T1S, R2E - 780 ACRES**

- ◆ T12S, R98W, S14 - 80 ACRES
- ◆ T2S, R2E, S1 - 460 ACRES
- ◆ T2S, R2E, S12 - 320 ACRES
- TOTAL FOR T12S, R98W & T2S, R2E - 860 ACRES**

5	8	7	6	5
6	9	10	11	12
7	16	15	14	13
8	17	18	19	20

NOTE:
PORTIONS OF LANDS IN T1S, R2E AND T2S, R2E ARE LEASED TO:
CLIFF AND JUDY DAVIS

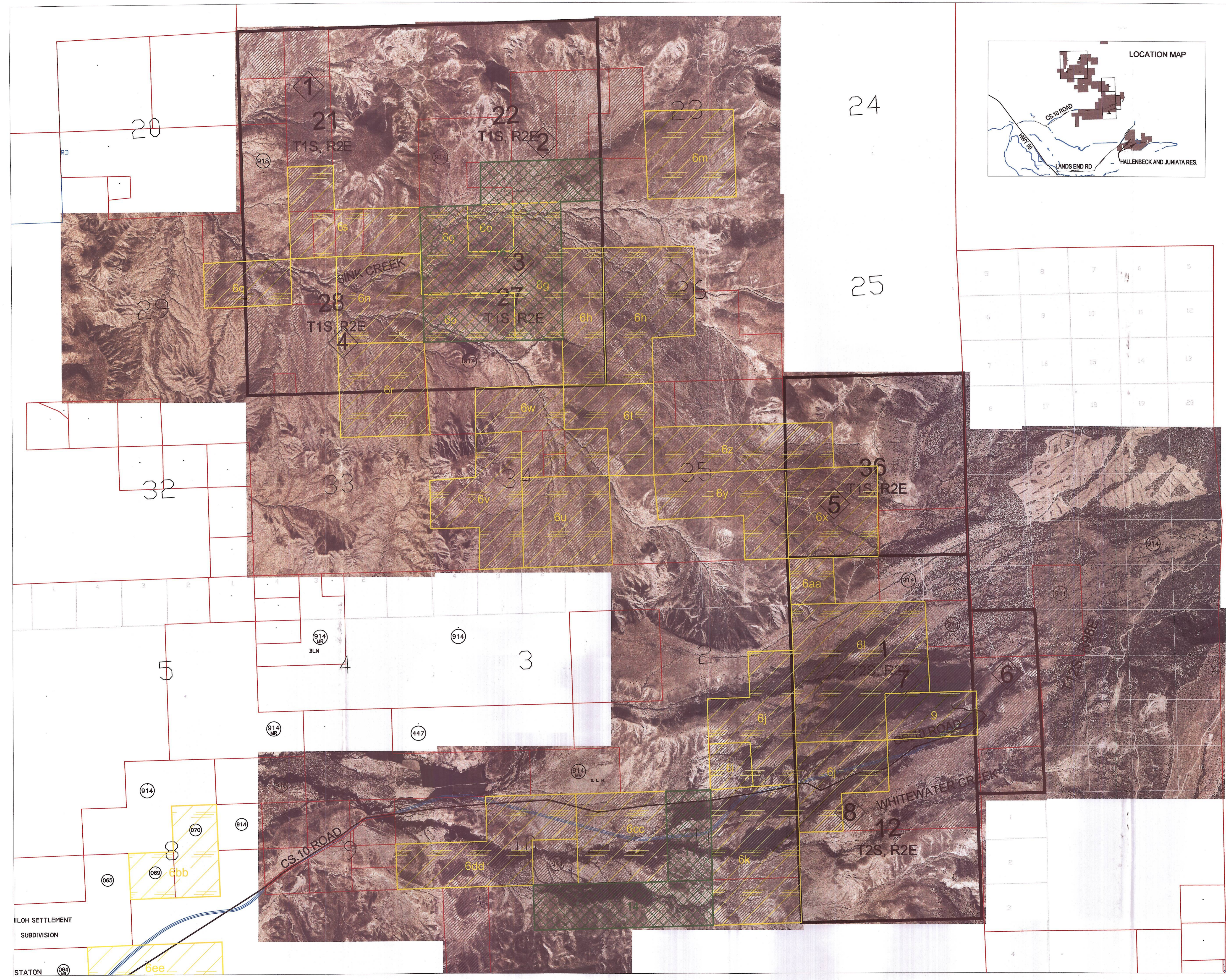
- CITY OWNED PROPERTY
- MINERAL RIGHTS - ORE ~ See Somerville Ranch Title Insurance # AGO-89690 ~ Jan 24, 1990
- MINERAL RIGHTS - COAL ~ See Somerville Ranch Title Insurance # AGO-89690
- MINERAL RIGHTS - OIL, GAS AND OTHER ~ See Somerville Ranch Title Insurance # AGO-89690
- MINERAL RIGHTS - xxx ~ See Somerville Ranch Title Insurance # AGO-89690

*CITY OF G-T
Somerville Ranch
Oil/Gas/mineral Estates*

AN

DRAWING NOT TO SCALE

Date of map



24

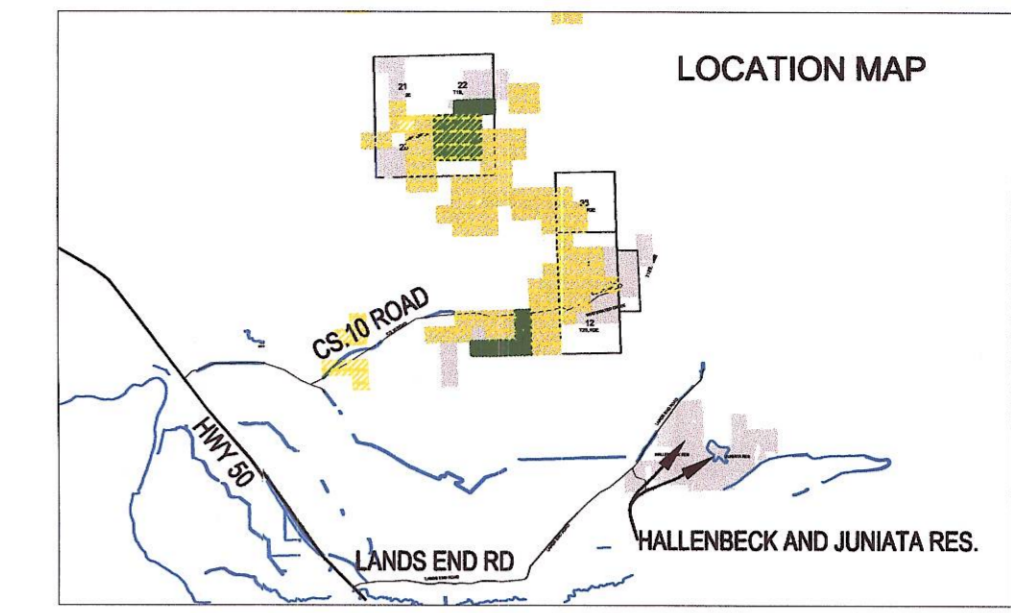
25

20

32

ILOH SETTLEMENT
SUBDIVISION



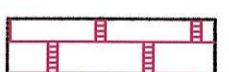


STATION 064



- ◆ T1S, R2E, S21 - 200 ACRES
- ◆ T1S, R2E, S22 - 300 ACRES
- ◆ T1S, R2E, S27 - 120 ACRES
- ◆ T1S, R2E, S28 - 80 ACRES
- ◆ T1S, R2E, S36 - 80 ACRES
- TOTAL FOR T1S, R2E - 780 ACRES**

- ◆ T12S, R98W, S14 - 80 ACRES
- ◆ T2S, R2E, S1 - 460 ACRES
- ◆ T2S, R2E, S12 - 320 ACRES
- TOTAL FOR T12S, R98W & T2S, R2E - 860 ACRES**

NOTE:
PORTIONS OF LANDS IN T1S, R2E
AND T2S, R2E ARE LEASED TO:
CLIFF AND JUDY DAVIS

-  CITY OWNED PROPERTY
-  MINERAL RIGHTS - ORE ~ See Somerville Ranch Title Insurance # AGO-89690
-  MINERAL RIGHTS - COAL ~ See Somerville Ranch Title Insurance # AGO-89690
-  MINERAL RIGHTS - OIL, GAS AND OTHER ~ See Somerville Ranch Title Insurance # AGO-89690
-  MINERAL RIGHTS - xxx ~ See Somerville Ranch Title Insurance # AGO-89690

DRAWING NOT TO SCALE

