

To access the Agenda and Backup Materials electronically, go to www.gjcity.org



**GRAND JUNCTION CITY COUNCIL
MONDAY, JANUARY 14, 2019**

**PRE-MEETING (DINNER) 5:00 P.M. ADMINISTRATION CONFERENCE ROOM
WORKSHOP, 5:30 P.M.
CITY HALL AUDITORIUM
250 N. 5TH STREET**

To become the most livable community west of the Rockies by 2025

1. Discussion Topics

- a. I-70 / 29 Road Interchange Program Environmental Linkages (PEL) Study Update

2. Next Workshop Topics

3. Other Business

What is the purpose of a Workshop?

The purpose of a Workshop is for the presenter to provide information to City Council about an item or topic that they may be discussing at a future meeting. The less formal setting of a Workshop is intended to facilitate an interactive discussion among Councilmembers.

How can I provide my input about a topic on tonight's Workshop agenda?

Individuals wishing to provide input about Workshop topics can:

1. Send an email (addresses found here www.gjcity.org/city-government/) or call one or more members of City Council (970-244-1504);
 2. Provide information to the City Manager (citymanager@gjcity.org) for dissemination to the City Council. If your information is submitted prior to 3 p.m. on the date of the Workshop, copies will be provided to Council that evening. Information provided after 3 p.m. will be disseminated the next business day.
 3. Attend a Regular Council Meeting (generally held the 1st and 3rd Wednesdays of each month at 6 p.m. at City Hall) and provide comments during "Citizen Comments."
-



Grand Junction City Council

Workshop Session

Item #1.a.

Meeting Date: January 14, 2019
Presented By: Trent Prall, Public Works Director
Department: Public Works - Engineering
Submitted By: Trent Prall, Public Works Director

Information

SUBJECT:

I-70 / 29 Road Interchange Program Environmental Linkages (PEL) Study Update

EXECUTIVE SUMMARY:

The City and the County have hired Dave Evans and Associates to conduct a preliminary environmental study for the proposed I-70/29 Interchange. This update will provide background information developed to date as well as lay out the proposed processes moving forward such as stakeholder involvement and public outreach.

BACKGROUND OR DETAILED INFORMATION:

On March 21, 2018, the City and County entered into a Memorandum of Understanding for the planning of the 29 Road and I-70 Interchange. The agreement established the lines of communication and responsibility for various work items necessary to accomplish a Planning and Environmental Linkages (PEL) study of 29 Road from Patterson Road (F Road), crossing I-70 and landing on a new connecting road North of I-70 to the airport. The agreement also established the intention of both the City and the County to cooperatively fund their share of the Project.

The PEL study is a precursor that will be used to identify transportation issues and environmental concerns with the Project. The intent of the PEL study is to develop the purpose and need for the Project, determine Project size, and develop and refine a range of alternatives. The PEL study will link planning to environmental issues and result in useful information that can be carried forward into the National Environmental Policy Act (NEPA) process as part of CDOT's Policy Directive 1601 Planning process for new interchanges on the federal highway system.

The County has since hired David Evans and Associates, Inc of Denver Colorado to perform the PEL study.

David Evans and Associates staff will present an update on the project, provide more detail on the PEL process, layout public and stakeholder involvement, discuss preliminary interchange goals and needs, and conclude with schedule and next steps.

FISCAL IMPACT:

The cost of the study is \$400,000 which is split evenly between Mesa County and the City of Grand Junction.

SUGGESTED ACTION:

No formal action is requested; the purpose of the presentation is to update Council on progress to date and solicit initial comments.

Attachments

1. PEL Presentation



29 Road Interchange at I-70 PEL Study

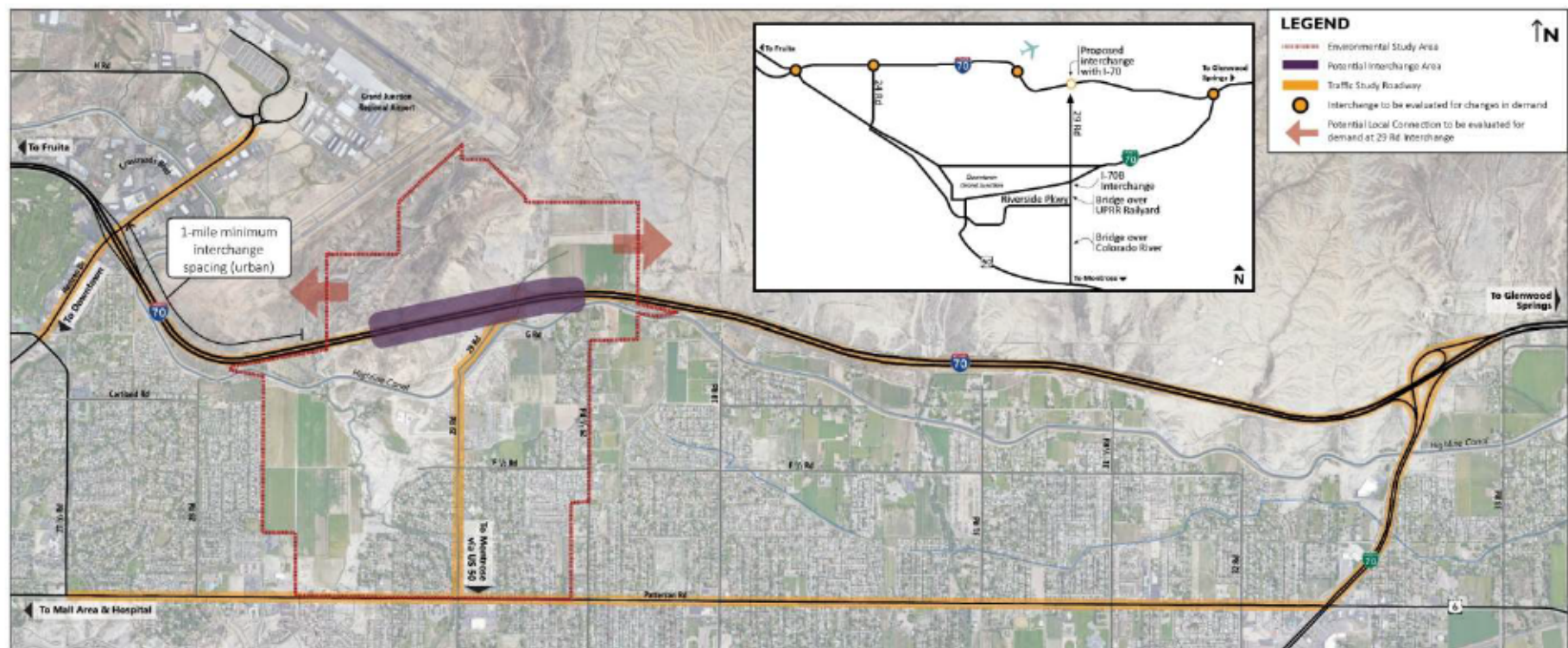
City of Grand Junction Council – Workshop Presentation

January 14, 2019

Study Overview

Study Overview

- Study initiated by City of Grand Junction and Mesa County
- Focuses on new interchange at 29 Road and I-70



Study Key Elements

- Identify the long-term vision for the new interchange
 - » Purpose and Need with concurrence from FHWA and CDOT
- Identify location and general concept for interchange configuration
- Complete stakeholder involvement
 - » Community stakeholders
 - » Environmental resource agencies
- Conduct public outreach
 - » Project website and video
 - » Two public meetings
- Complete documentation that can be carried forward through project development, design, and construction

Planning and Environmental Linkage (PEL) Process

What is a PEL Study?

- An approach to transportation decision-making that considers environmental, community, and economic goals early in the planning stage
 - » FHWA and CDOT planning process
- Documentation to National Environmental Policy Act (NEPA) standards for CDOT and FHWA concurrence
- Elements carried forward into future processes:
 - » Purpose and Need
 - » Alternatives Evaluation
 - » Early Stakeholder and Resource Agency Involvement
 - » Public Outreach

Why do a PEL Study?

- Brings CDOT and FHWA directly into the project decision-making process
- Minimizes duplication of effort for next steps in interchange approval process
 - » CDOT 1601 process
 - » FHWA Interchange Access Request
- Promotes efficient and cost-effective solutions
- Reduces delay in project implementation when funding is identified

Public and Stakeholder Involvement

Agency Coordination

- Technical Team – primary connection with organizations
 - » City of Grand Junction
 - » Mesa County
 - » CDOT
 - » FHWA
 - » GVMPO
 - » Grand Junction Regional Airport/FAA
 - » Grand Valley Transit
- Elected official meetings and presentations
- Resource Agencies
 - » Letters for review and input – three contact points

Public and Stakeholder Involvement

- Public meetings - open house format
 - » Public Meeting #1 – February 2019
 - Study introduction
 - Input on area issues and needs
 - » Public Meeting #2 – Spring 2019
 - Draft recommendations
- Stakeholder outreach and one-on-one meetings
 - » Grand Junction Regional Airport
 - » Grand Junction Economic Development Council
 - » Grand Junction Chamber of Commerce
 - » Area developers
- Project website

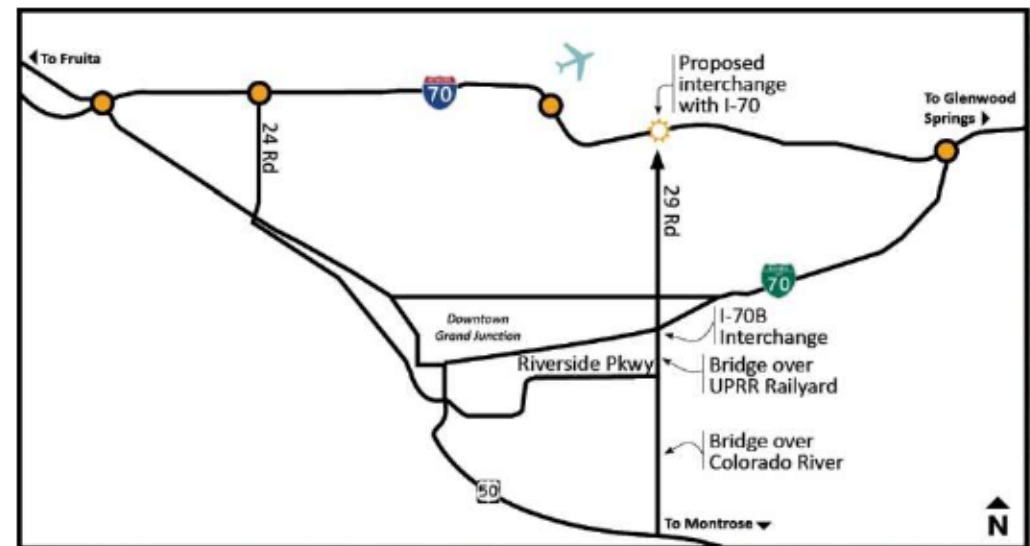
Interchange Goals and Needs

Interchange Goals

- Improve multimodal transportation system connectivity
- Upgrade existing roadway/infrastructure
- Support local and regional transportation and land use planning efforts
 - » Enhance future development opportunities

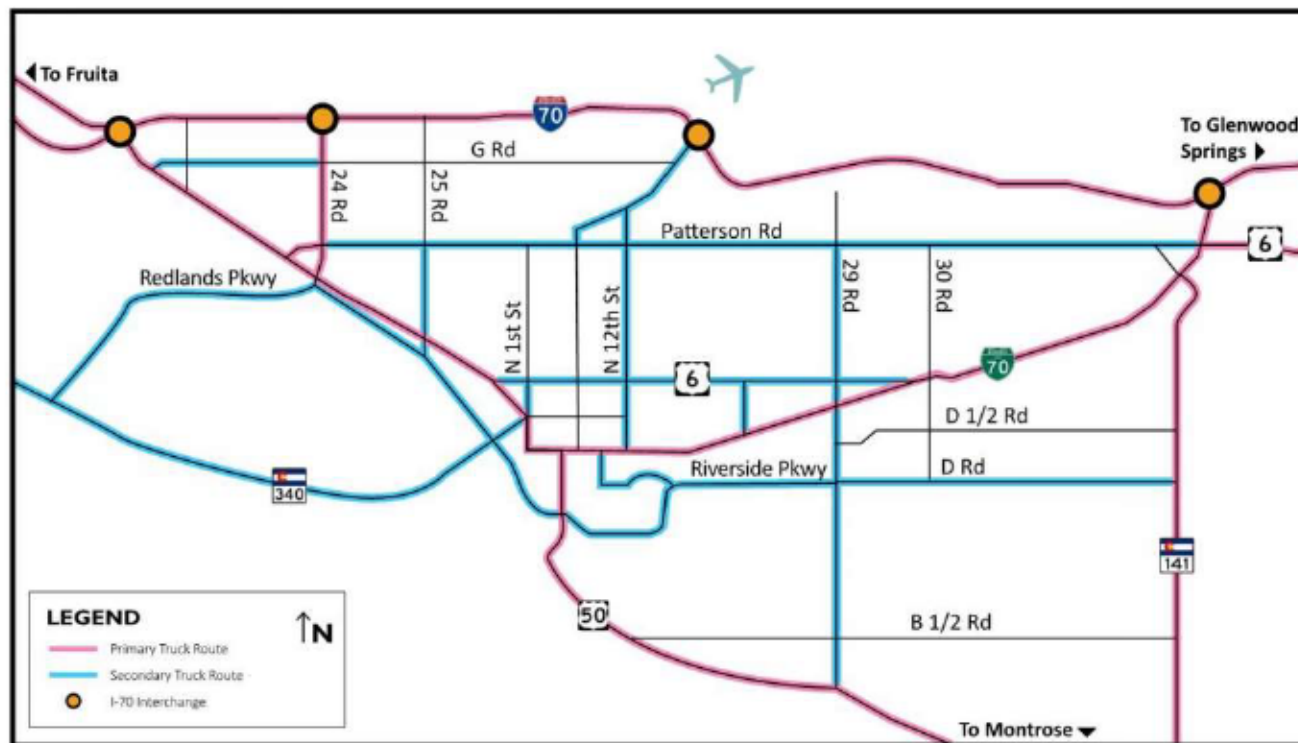
Need for New Interchange

- Improve system connections and efficiencies with upgraded north-south corridor
 - » Connection with Riverside Parkway for internal beltway
 - » Build on recent corridor improvements (\$170M in City and County investments)
- Reduce regional traffic on local streets
 - » Insufficient capacity and discontinuous routes



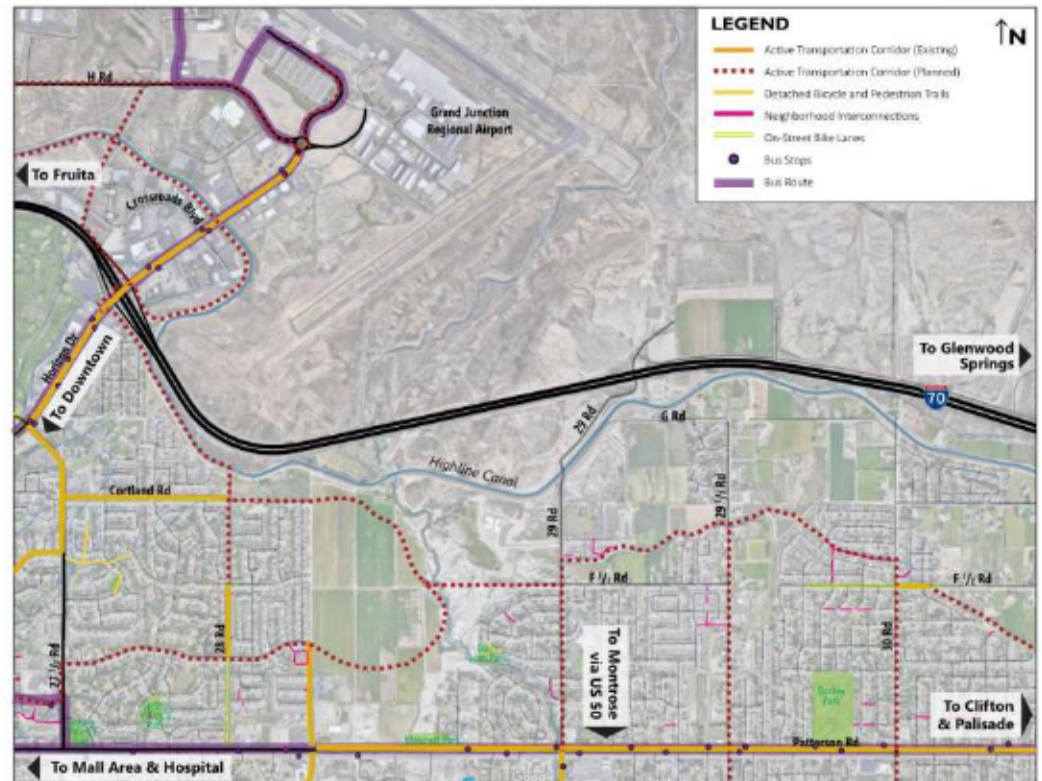
Need for New Interchange

- Improve regional connection between US 50 and I-70, particularly for freight



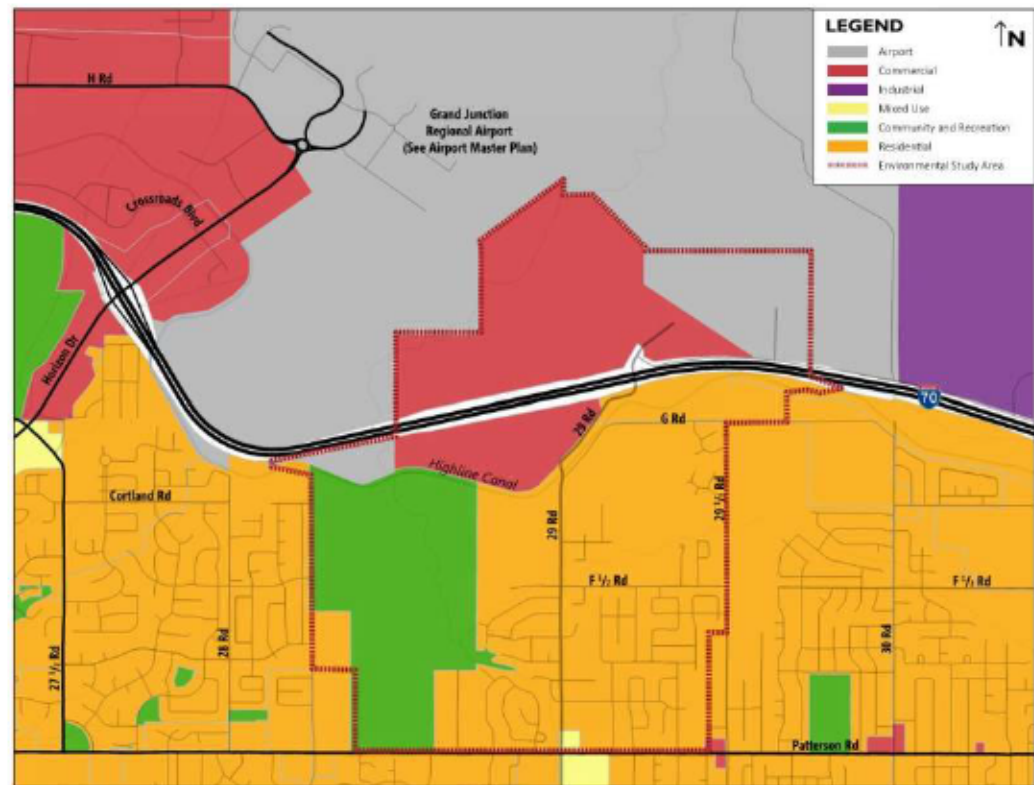
Need for New Interchange

- Improve multimodal access and mobility to I-70 and Grand Junction Regional Airport area
- Upgrade existing roadway/infrastructure deficiencies
 - » 29 Road bridge over I-70
 - » 29 Road north of Patterson Road



Need for New Interchange

- Support regional transportation and land use planning efforts
 - » Grand Junction Comprehensive Plan
 - Balanced, connected transportation system
 - Garfield Planning Area - new industrial and commercial land uses
 - Matchett Park facilities
 - » Grand Valley Circulation Plan
 - » 2040 Regional Transportation Plan

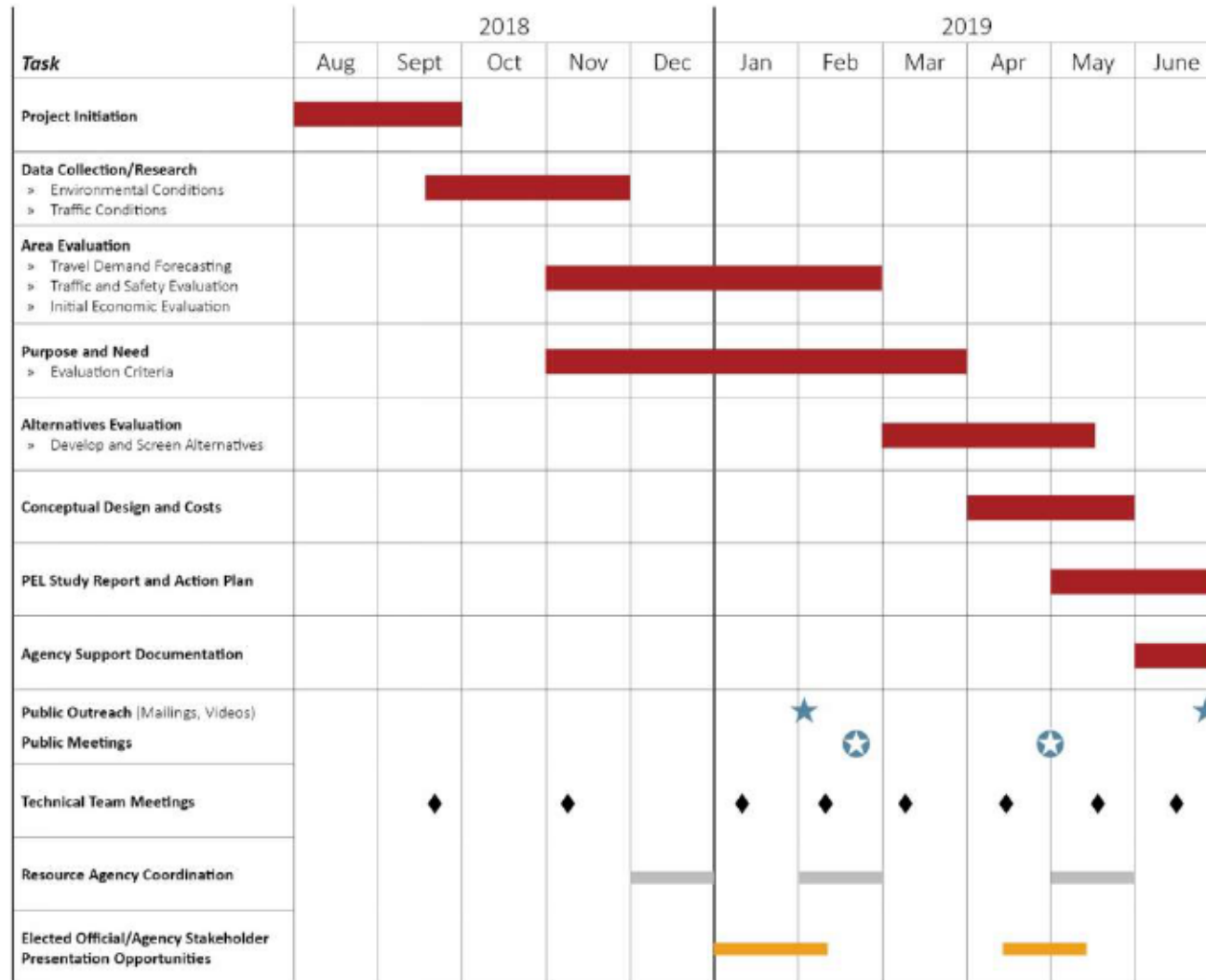


Study Schedule and Next Steps

Next Steps

- Existing conditions evaluation
 - » Traffic and safety analyses
 - » Economic evaluation
 - » Resource agencies – review and input
- Stakeholder involvement
- Public Meeting #1
 - » February 2019
- Detailed Purpose and Need
 - » Purpose and Need agreed upon by FHWA and CDOT
- Alternatives development
 - » Interchange location and general configuration

PEL Study Schedule





29 Road Interchange at I-70 PEL Study

City of Grand Junction Council – Workshop Presentation

January 14, 2019