

ORDINANCE NO. 1758

AN ORDINANCE ANNEXING TERRITORY TO THE CITY OF GRAND JUNCTION,
COLORADO

WHEREAS, on the 19th day of July, 1978, the City Council of the City of Grand Junction considered a petition for the annexation of the following described territory to the City of Grand Junction; and

WHEREAS, the City Council determined that said territory was eligible for annexation and that no election was necessary to determine whether such territory should be annexed as the petition was signed by the owner of one hundred percent of the territory petitioned for annexation;

NOW, THEREFORE, BE IT ORDAINED BY THE CITY COUNCIL OF THE CITY OF GRAND JUNCTION, COLORADO: That the following territory, to wit:

The Northwest Quarter of the Northeast Quarter of Section 1, Township 1 South, Range 1 West, Ute Meridian, the same being Lots 11 and 12, 17 and 18 of Jaynes Subdivision, in Mesa County, Colorado, together with right of way for G Road on the North, 27 1/2 Road on the West and F3/4 Road on the South;

be and the same is hereby annexed to the City of Grand Junction, Colorado.

PASSED and ADOPTED this 2nd day of August, 1978.

Karl M. Johnson

President of the Council

Attest:

Neva B. Lockhart, CMC

City Clerk

I HEREBY CERTIFY that the foregoing ordinance, being Ordinance No. 1758, was introduced, read, and ordered published by the City Council of the City of Grand Junction, Colorado, at a regular meeting of said body held on the 19th day of July, 1978, and that the same was published in The Daily Sentinel, a newspaper published and in general circulation in said City, at least ten days before its final passage.

IN WITNESS WHEREOF, I have hereunto set my hand and affixed the official seal of said City this 3rd day of August, 1978.

Neva B. Lockhart

Neva B. Lockhart, CMC

City Clerk

First Publication: July 21, 1978

Final Publication: August 4, 1978

Effective: September 3, 1978

JONES - SCHINDEL ANNEXATION

PARTEE HEIGHTS ANNEX.

DESCRIPTION

The NW 1/4 of the NE 1/4 of Section 1 T1S, R1W of the Ute Meridian, the same being Lots 11, 12, 17, and 18 of Jaynes Subdivision in Mesa County, Colorado, together with the R.O.W. for "G" Road on the North, 27 1/2 Road on the West, and F 3/4 Road on the South.

LEGEND

Boundary of existing corporate limits —————
 Boundary of new corporate limits —————

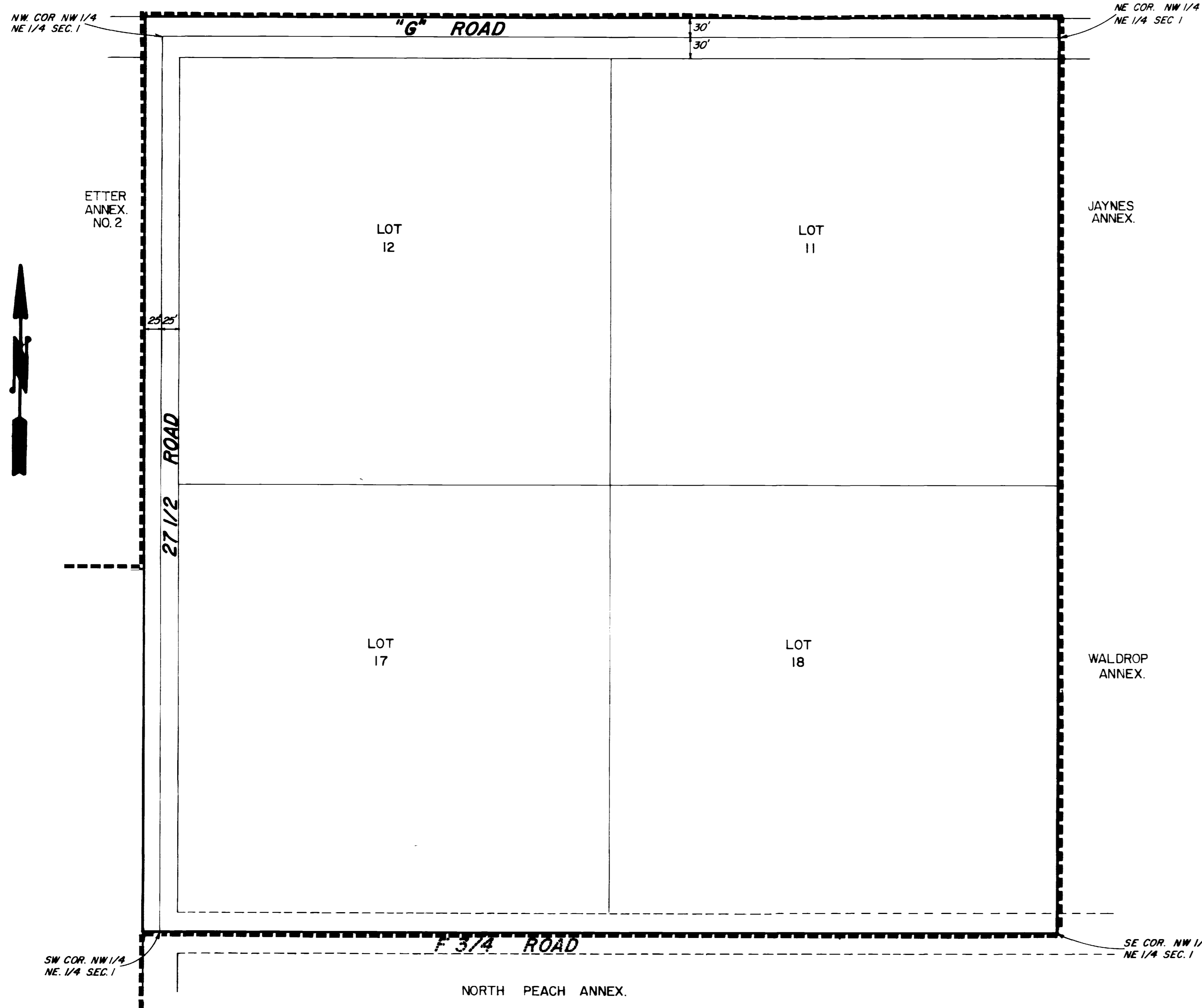
AREA OF ANNEXATION

Perimeter of area to be annexed ————— approx. 5,390 feet
 Boundary contiguous to corporate limits ————— approx. 4,850 feet
 Area of annexation ————— approx. 42 acres

ENGINEER'S CERTIFICATE

I, Ronald P. Rish a Registered Professional Engineer do hereby certify that the accompanying plat and legal description of Jones-Schindel Annex was compiled under my direct supervision from information secured from the Mesa County Assessor's Office.

SIGNED Ronald P. Rish DATE 8-8-78
 ORDINANCE N^o 1758 EFFECTIVE DATE 9-3-78



REVISION Δ	DESCRIPTION	DATE	DRAWN BY <u>DJB</u>	DATE <u>7-31-78</u>	SCALE
REVISION Δ			CHECKED BY	DATE	PLAN
REVISION Δ			APPROVED BY	DATE	PROFILE
REVISION Δ			FIELD BOOK NO.	PAGE	HORIZ.
					VERT.

DEPARTMENT OF PUBLIC WORKS AND UTILITIES
 ENGINEERING DIVISION
 CITY OF GRAND JUNCTION, COLORADO

JONES-SCHINDEL ANNEXATION
 SHEET NO. 1
 OF 1
 FILE NO.