



Purchasing Division

ADDENDUM NO. 2

DATE: February 15, 2019
FROM: City of Grand Junction Purchasing Division
TO: All Offerors
RE: 2019 Sewer Interceptor Repair and Replacements IFB-4602-19-DH

Offerors responding to the above referenced solicitation are hereby instructed that the requirements have been clarified, modified, superseded and supplemented as to this date as hereinafter described.

Please make note of the following clarifications:

1. Q. We would like to submit an "as equal" substitute material for the manhole rehab portion of the 2019 Sewer Interceptor Repair and Replacements project. The product that we would like to submit is **GeoKrete®**, which is a corrosive resistant geopolymer material with superior structural strength.

A. The City has conditionally approved GeoKrete as an "as equal" substitute material for the rehabilitation of the existing manholes, contingent on manufacturer acceptance of the required material and installation warranty period of 10 years, and minimum coating thickness of 500 mils.

2. Q. Have you considered Electro Scan for the 2019 Sewer Interceptor Repair and Replacements project?

A. The City is considering, and will be responsible for hiring a 3rd party QA testing company for the Quality Assurance of the CIPP and manhole rehabilitation installation.

The Contractor is responsible for Quality Control during the installation of the CIPP and manhole rehabilitation.

3. Q. We would like to submit as equal Castagra Ecodur material for the manhole rehab portion of the 2019 Sewer Interceptor Repair and Replacement Project.

A. The City has conditionally approved Costagra Ecodur as an "as equal" substitute material for the rehabilitation of the existing manholes, contingent on manufacturer acceptance of the required material and installation warranty period of 10 years, and minimum coating thickness of 500 mils.

4. Q. Can the City please provide a SS plan upstream of the 24" line where the bypass would start? Refer to map page 19 – MH C3-261-011.

A. Yes. Please see the attached As-Built sheet(s) for the above requested segment.

5. To clarify, the Inquiry Deadline for this solicitation process is by 5:00pm on February 19, 2019.

6. Q. Can videos of pipeline inspection be provided?

A. Videos will be provided to the awarded contractor for this project.

7. Q. Is leak mitigation in the manhole substrate and between the host pipe and the CIPP liner at the manhole going to be the responsibility of the manhole lining contractor?

A. Yes. Refer to SP-3, within Section 3.4 (Scope of Work), within the original Invitation for Bid document. The Contractor performing the liner installation shall prepare the manhole surface prior to applying the liner. This includes mitigating any leakage through the manhole substrate, as well as between the host pipe and the CIPP liner at the manhole.

8. Q. Will the City provide any pre-CCTV recordings for any of the segments proposed to be replaced?

A. Yes. Once the Contractor has been selected, the City will provide links to segments currently on record. Please note that the City does not guarantee that all segments included in the proposed project have been TV'd. The Contractor will be responsible for supplying CCTV on additional segments they deem necessary. Additional CCTV operations shall be incidental to the CIPP installation, and will not be paid for separately.

9. Q. Will the City require styrene testing?

A. Yes. All water produced during the curing process of the CIPP must be captured and tested, prior to being released back into the City system.

10. Q. How far down will the coatings within the rehabilitated manholes be required to go?

A. The coating within the lined manholes will be extended down to the low-flow water line.

11. Q. Will the City locate and mark the existing locations of the damaged multi-use concrete path prior to construction start date?

A. Yes. The City will mark all damaged locations of the concrete path adjacent to Line(s) A & B prior to beginning construction. The Contractor shall include the identified damaged areas of the multi-use trail on the traffic control plan.

12. Q. Can construction materials be stored at the toe of the RR embankment?

A. Yes. However, the staging area for any construction materials must be outside the existing railroad easement.

13. Q. How many manholes will need to be lined, and how many in addition will require manhole ring and cover replacement? Also, how many manholes will need to be fully replaced?

A. The City does not know the current condition of all existing manholes within the scope of the project. The City anticipates that zero manholes will need to be fully replaced. During construction, the Contractor shall notify the engineer if any manholes, (including the rings and covers) that are in a

state of disrepair, where lining alone appears to be inadequate for rehabilitation. The City anticipates that all manholes within the scope of the CIPP project will be lined.

14. Q. What is to be done with the sediment after cleaning the host pipe and manhole, prior to lining the manhole?

A. Refer to subsection(s) 3.3.35 and 3.3.40 of the Special Conditions, within the Invitation to Bid document, regarding the capture and delivery of sediment from cleaning the existing pipes and manholes.

15. Subsection 3.3.19 Quality Control Testing has been updated or modified as follows:

Quality Control Testing: The Contractor shall perform Quality Control on the CIPP installation per Appendix D.1/D.2, Cured-In-Place-Pipe (CIPP). The Contractor shall perform Quality Control on manhole rehabilitation per SP-3 of the Special Provisions.

16. The updated Construction plans will be included as part of Addendum #3.

17. The updated Bid Schedule will be included as part of Addendum #3.

The original solicitation for the project noted above is amended as noted.

All other conditions of subject remain the same.

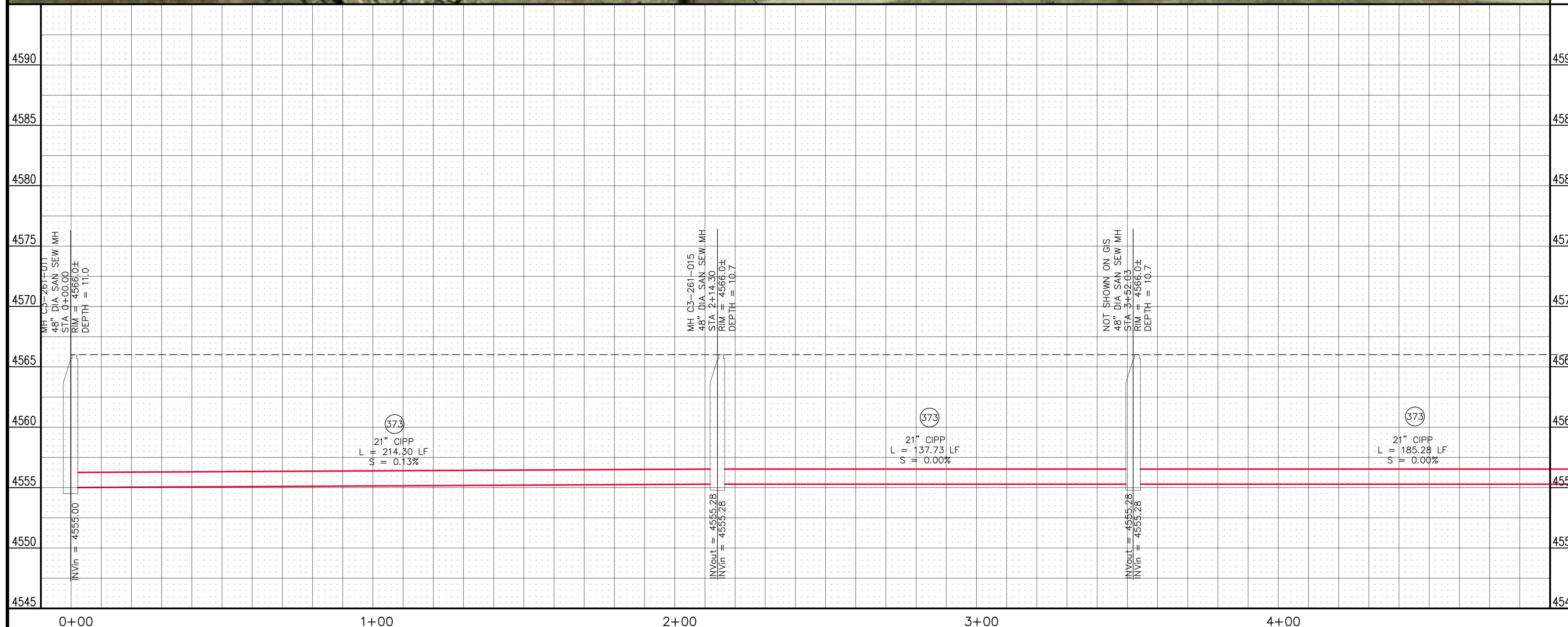
Respectfully,



Duane Hoff Jr., Senior Buyer
City of Grand Junction, Colorado

373 SP CURED IN PLACE SANITARY SEWER PIPE PER PROJECT SPECIFICATIONS. DESIGNED, SUBMITTED, AND STAMPED BY P.E. FIELD VERIFY PIPE SIZE/MATERIAL BEFORE ORDERING LINER. DURING NEW PIPE INSTALLATION IT WILL BE NECESSARY TO BYPASS PUMP SEWAGE AROUND WORK AREA TO A DOWNSTREAM MANHOLE. IF NECESSARY PROVIDE TRAFFIC CONTROL IN WORK AREA AND BYPASS AREA. MAINTAIN ACCESS TO ALL BUSINESSES AND RESIDENCES AND TWO WAY TRAFFIC.

376 REMOVE CIPP COUPON AT SERVICE LOCATION (INCIDENTAL TO CIPP)



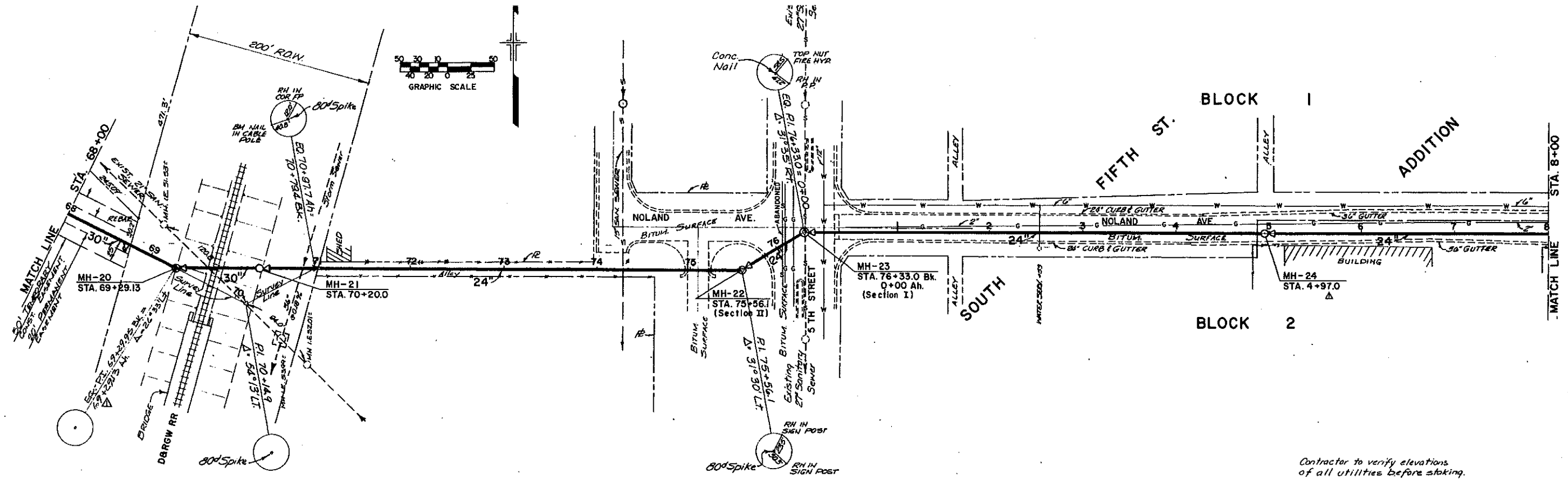
REVISION	DESCRIPTION	DATE	DRAWN BY	DATE
1			JAH	7/2012
2			JT	7/2012
3				
4				

SCALES:
PLAN HORIZONTAL 0 5 10 20
PROFILE HORIZONTAL 0 5 10 20
VERTICAL 0 2.5 5

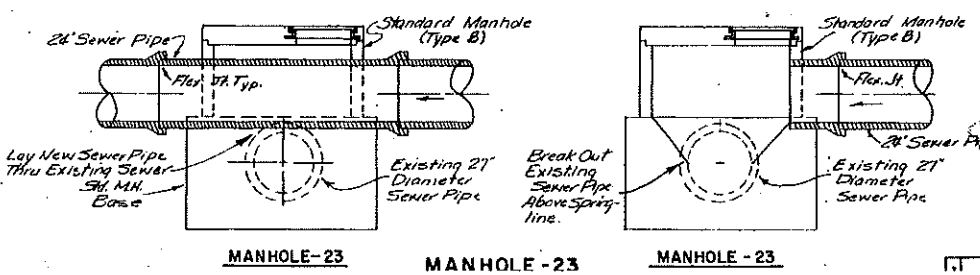
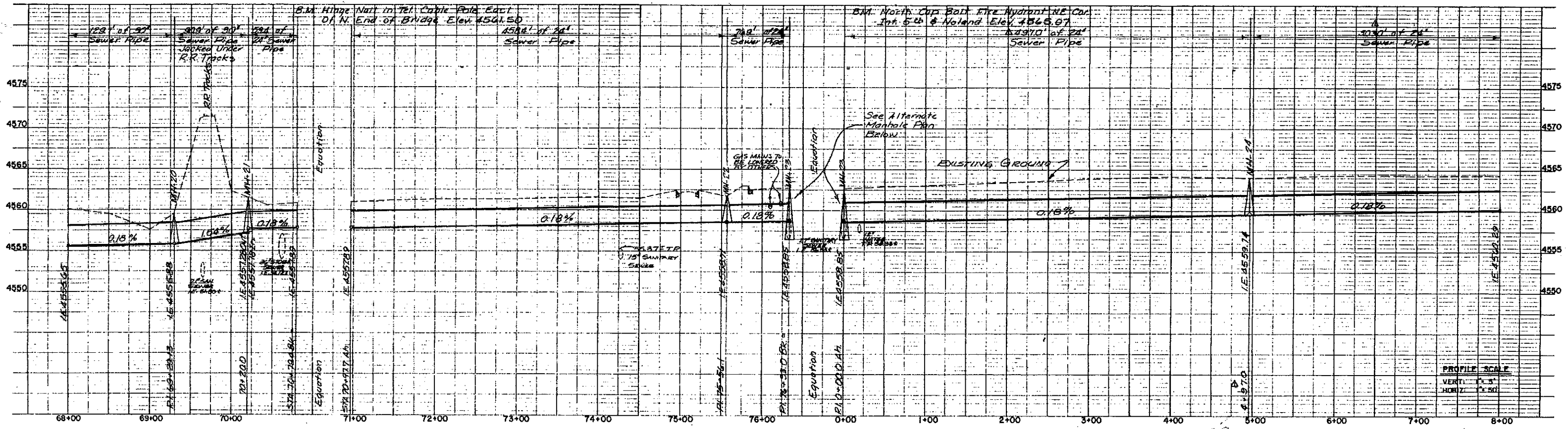


**PUBLIC WORKS
AND PLANNING
ENGINEERING DIVISION**

**2012 SEWER INTERCEPTOR REHABILITATION
SANITARY SEWER PLAN AND PROFILE
RIVER TRAIL - STA. 0+00 TO 5+00**



Contractor to verify elevations of all utilities before staking.



AS CONSTRUCTED
THIS DRAWING HAS BEEN PREPARED BY THE FIELD PARTY OF THE ABOVE MENTIONED PROJECT.

SEWER SYSTEM IMPROVEMENTS
GRAND JUNCTION, COLORADO

SOUTH SIDE INTERCEPTOR SEWER (SECTIONS I & II)
PLAN and PROFILE
STA. 68+00 to STA. 76+33 (SECT. I)
STA. 0+00 to STA. 8+00 (SECT. II)

HENNINGSON, DURHAM & RICHARDSON, Inc.
ENGINEERS - ARCHITECTS