



Purchasing Division

## **ADDENDUM NO. 1**

**DATE:** March 15, 2019  
**FROM:** City of Grand Junction Purchasing Division  
**TO:** All Offerors  
**RE:** The Riverfront at Dos Rios Business Park Phase I IFB-4616-19-DH

Offerors responding to the above referenced solicitation are hereby instructed that the requirements have been clarified, modified, superseded and supplemented as to this date as hereinafter described.

Please make note of the following clarifications:

1. A clarification regarding tax exempt status and the Notice to Proceed date. Upon selection of a low bidder, the City can issue a letter of intent. This will allow the low-bidder time to obtain approval for tax exempt status prior to the official Notice to Proceed date. The Notice to Proceed date will begin the clock on the maximum 90-day construction time window. Please note, the contractor will not be able to order any construction materials nor incur any costs prior to the official Notice to Proceed date.
2. The Site Lighting/Electrical Plans have been attached to the end of the updated construction plans as part of this Addendum.
3. The project is less than 1-acre of disturbed area and will not require a Stormwater Discharge Permit, as part of CDPHE's new online application process, effective on April 1, 2019. We do encourage all contractors to familiarize themselves with this new on-line process. Please note that the contractor will still be required to follow all current Stormwater discharge standards.
4. Clarification has been made regarding the sanitary sewer service pipe size, and is reflected on sheets 6 & 7 within the updated construction plan set.
5. See sheet 12 on the updated construction plan set for proposed additional detectable warning strip, and associated change to the project Bid Schedule.
6. Item(s) 46 through 49 on the attached Bid Schedule represent the quantities for the different sized conduits to be placed in the joint utility trench. See utility trench detail on sheet E9 of the attached Site Lighting/Electrical Plan set.
7. Question #1: Is ADS pipe an acceptable alternate to RCP pipe?

Answer #1: Yes. ADS HDPE pipe is an acceptable alternative pipe material to RCP pipe?

8. Question #2: Can the working hours listed in the original Invitation for Bid Solicitation be altered?

Answer #2: The contractor and project manager can discuss requested extended hours and or possible weekend construction hours.

9. Question #3: Sheet 12 of the drawings calls for a temporary asphalt milling drive surface in two different locations. However, there is no bid item for supplying or installing these millings. Please clarify.

Answer #3: The temporary asphalt milling drive surface areas shall be installed "By Others", and are not part of the Contractor's scope of work, and are not included in the contract Bid Schedule. See the attached updated Construction Plan sheets.

The original solicitation for the project noted above is amended as noted.

All other conditions of subject remain the same.

Respectfully,



Duane Hoff Jr., Senior Buyer  
City of Grand Junction, Colorado

# Bid Schedule: River Front at Dos Rios - Phase 1 (Addendum #1)

**Contractor:** \_\_\_\_\_

Item No.	CDOT, City Ref.	Description	Quantity	Units	Unit Price	Total Price
1	104.4	Cap top half of sewer in concrete per City Standard Detail GU-04	2.	EA	\$ _____	\$ _____
2	108.2	6" Irrigation Conduit (Schedule 80 PVC)	525.	LF	\$ _____	\$ _____
3	108.2	6" Water Pipe (C-900 PVC)	20.	LF	\$ _____	\$ _____
4	108.2	8" Water Pipe (C-900 PVC)	500.	LF	\$ _____	\$ _____
5	108.2	4" Sewer Service Pipe (SDR 35)	60.	LF	\$ _____	\$ _____
6	108.2	6" Gravity Sewer Pipe (SDR 35)	75.	LF	\$ _____	\$ _____
7	108.2	8" Gravity Sewer Pipe (SDR 35)	400.	LF	\$ _____	\$ _____
8	108.2	12" Storm Drain Pipe (RCP)	32.	LF	\$ _____	\$ _____
9	108.2	18" Storm Drain Pipe (RCP)	500.	LF	\$ _____	\$ _____
10	108.2	24" Storm Drain Pipe (RCP)	230.	LF	\$ _____	\$ _____
11	108.2	Import Trench Backfill	35.	CY	\$ _____	\$ _____
12	108.3	6" Gate Valve	2.	EA	\$ _____	\$ _____
13	108.3	8" Gate Valve	2.	EA	\$ _____	\$ _____
14	108.3	8" x 6" Tee	2.	EA	\$ _____	\$ _____
15	108.3	8" x 8" Tee	1.	EA	\$ _____	\$ _____
16	108.3	8", 11.25° Elbow	2.	EA	\$ _____	\$ _____
17	108.3	8", 22.5° Elbow	3.	EA	\$ _____	\$ _____
18	108.3	8" End Cap/Plug	2.	EA	\$ _____	\$ _____
19	108.3	Fire Hydrant	2.	EA	\$ _____	\$ _____
20	108.3	8" x 4" Sewer Service Tap	1.	EA	\$ _____	\$ _____
21	108.3	Sanitary Sewer Cleanout (2-way) to include appurtenances per City Standard Detail SS - 07.	1.	EA	\$ _____	\$ _____
22	108.4	1" Water Service Line (Copper)	50.	LF	\$ _____	\$ _____
23	108.4	1" Water Service Assembly	2.	EA	\$ _____	\$ _____
24	108.5	Sanitary Sewer Basic Manhole (48" I.D.)	5.	EA	\$ _____	\$ _____
25	108.5	Manhole Barrel Section (D>5')(48" I.D.)	12.	VLF	\$ _____	\$ _____
26	108.5	Storm Sewer Basic Manhole (48" I.D.)	3.	EA	\$ _____	\$ _____
27	108.5	Storm Sewer Basic Manhole (60" I.D.)	2.	EA	\$ _____	\$ _____
28	108.7	Granular Stabilization Material (Type B)	40.	TONS	\$ _____	\$ _____
29	108.6	Single Storm Drain Inlet (Vertical Curb)	2.	EA	\$ _____	\$ _____
30	202	Remove Asphalt	1,700.	SY	\$ _____	\$ _____
31	202	Remove Concrete	15.	SY	\$ _____	\$ _____
32	203	Excavation and Embankment - See SP - 4.	1,925.	CY	\$ _____	\$ _____
33	207	Topsoil (6" Thick)	700.	SY	\$ _____	\$ _____
34	208	Erosion Control (Complete in Place)	1.	Lump	\$ _____	\$ _____

# Bid Schedule: River Front at Dos Rios - Phase 1 (Addendum #1)

**Contractor:** \_\_\_\_\_

Item No.	CDOT, City Ref.	Description	Quantity	Units	Unit Price	Total Price
35	208	Stabilized Construction Entrance	2.	EA	\$ _____	\$ _____
36	209	Dust Abatement	30.	DAYS	\$ _____	\$ _____
37	304	Aggregate Base Course (Class 6) (13" Thick)	2,250.	SY	\$ _____	\$ _____
38	306	Reconditioning (12" Deep)	2,250.	SY	\$ _____	\$ _____
39	401	Hot Mix Asphalt (5" thick) (Grading SX 75, Binder Grade 64-22)	615.	TON	\$ _____	\$ _____
40	420	Geosynthetics - Mirafi RS580i or approved equal	200.	SY	\$ _____	\$ _____
41	608	Concrete Curb (6" Wide, 14" High) to include 6" of Class 6 Aggregate Base	10.	LF	\$ _____	\$ _____
42	608	Concrete Curb and Gutter (2' Wide) to include 6" of Class 6 Aggregate Base Course.	780.	LF	\$ _____	\$ _____
43	608	Concrete Sidewalk (6" Thick) to include 6" of Class 6 Aggregate Base Course.	215.	SY	\$ _____	\$ _____
44	608	Concrete Curb Ramp to include 6" of Class 6 Aggregate Base Course.	6.	SY	\$ _____	\$ _____
45	608	Detectable Warning (Cast Iron, Wet Set)(2'x2' per Ramp)	2.	EA	\$ _____	\$ _____
46	613	Joint Trench with Broad Band (Site Electrical - street lt circuits-(2)) 2" Schedule 80 PVC. Refer to Utility Detail	2,230.	LF	\$ _____	\$ _____
47	613	Joint Trench with Site Electrical - street lt circuits (Broad Band (3)-2") Schedule 80 PVC. Refer to Utility Detail	3,345.	LF	\$ _____	\$ _____
48	613	Joint Trench with XCEL energy and Charter who provides and places their materials (Century Link) 4" Schedule 80 PVC. Refer to Utility Detail.	1,115.	LF	\$ _____	\$ _____
49	613	Joint Trench with XCEL energy and Charter who provides and places their materials (Century Link) 2" Schedule 80 PVC. Refer to Utility Detail and SP -5 for details.	1,115.	LF	\$ _____	\$ _____
50	613	Large Splice Box (Quasite) (3' - 2 5/8" x 2'-2") (Broad Band)	2.	EA	\$ _____	\$ _____
51	613	Splice Box (Provided by Others-	2.	EA	\$ _____	\$ _____
52	620	Sanitary Facility	1.	EA	\$ _____	\$ _____
53	625	Construction Surveying	1.	Lump	\$ _____	\$ _____

# Bid Schedule: River Front at Dos Rios - Phase 1 (Addendum #1)

**Contractor:** \_\_\_\_\_

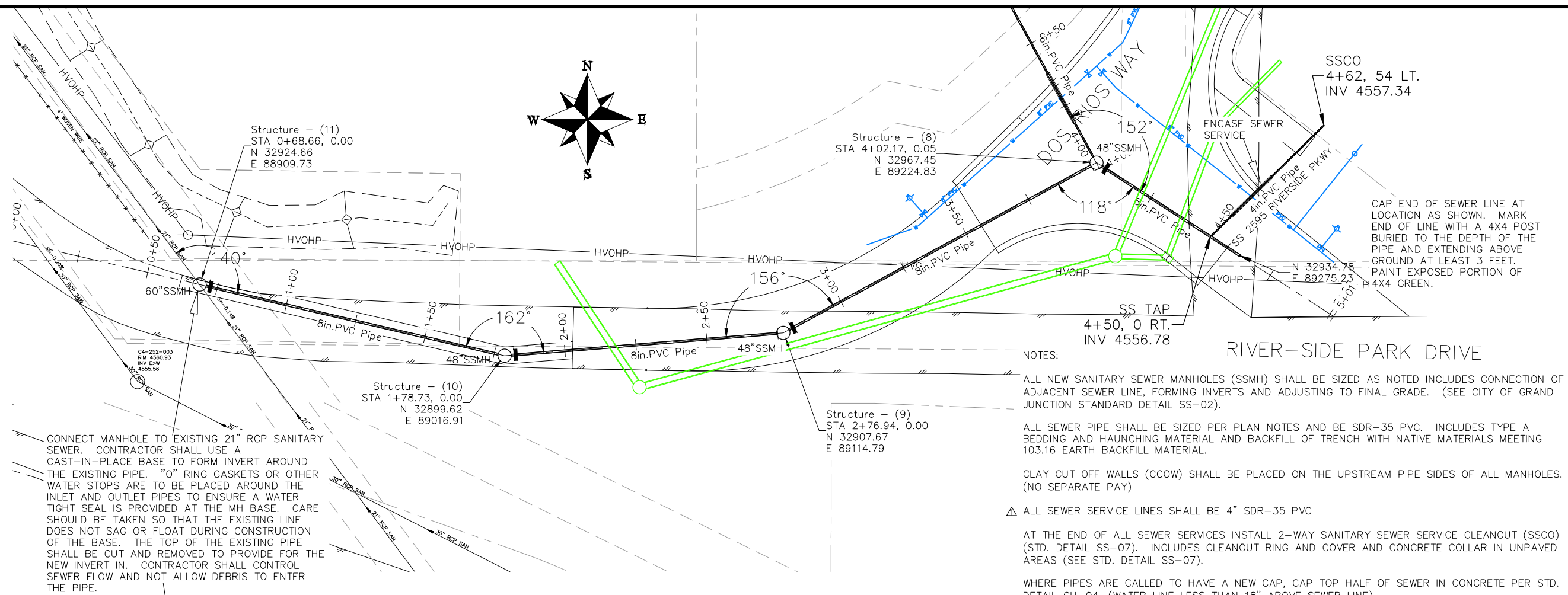
Item No.	CDOT, City Ref.	Description	Quantity	Units	Unit Price	Total Price
54	626	Mobilization	1.	Lump	\$ _____	\$ _____
55	630	Traffic Control (Complete In Place)	1.	Lump	\$ _____	\$ _____
56	630	Traffic Control Plan	1.	Lump	\$ _____	\$ _____
57	Electrical	Luminaire LED (Street) to include foundation.	5.	EA	\$ _____	\$ _____
58	Electrical	Electrical Pull Box (Type I)(11" x 18" x 12")	7.	EA	\$ _____	\$ _____
59	Electrical	2 Plex Receptacle (Complete in Place) to include appurtenances.	1.	EA	\$ _____	\$ _____
60	Electrical	Wiring (Complete in Place)	1.	LUMP	\$ _____	\$ _____
61	Electrical	Electrical Panel Pedestal (Complete in Place) to Include Appurtenances.	1.	EA	\$ _____	\$ _____
MCR		Minor Contract Revisions	---	---	---	\$ 30,000.00

**Bid Amount:** \$ \_\_\_\_\_

**Bid Amount:** \_\_\_\_\_

dollars

<b>Contractor Name:</b>
<b>Contractor Address:</b>
<b>Contractor Phone #:</b>



NOTES:

ALL NEW SANITARY SEWER MANHOLES (SSMH) SHALL BE SIZED AS NOTED INCLUDES CONNECTION OF ADJACENT SEWER LINE, FORMING INVERTS AND ADJUSTING TO FINAL GRADE. (SEE CITY OF GRAND JUNCTION STANDARD DETAIL SS-02).

ALL SEWER PIPE SHALL BE SIZED PER PLAN NOTES AND BE SDR-35 PVC. INCLUDES TYPE A BEDDING AND HAUNCHING MATERIAL AND BACKFILL OF TRENCH WITH NATIVE MATERIALS MEETING 103.16 EARTH BACKFILL MATERIAL.

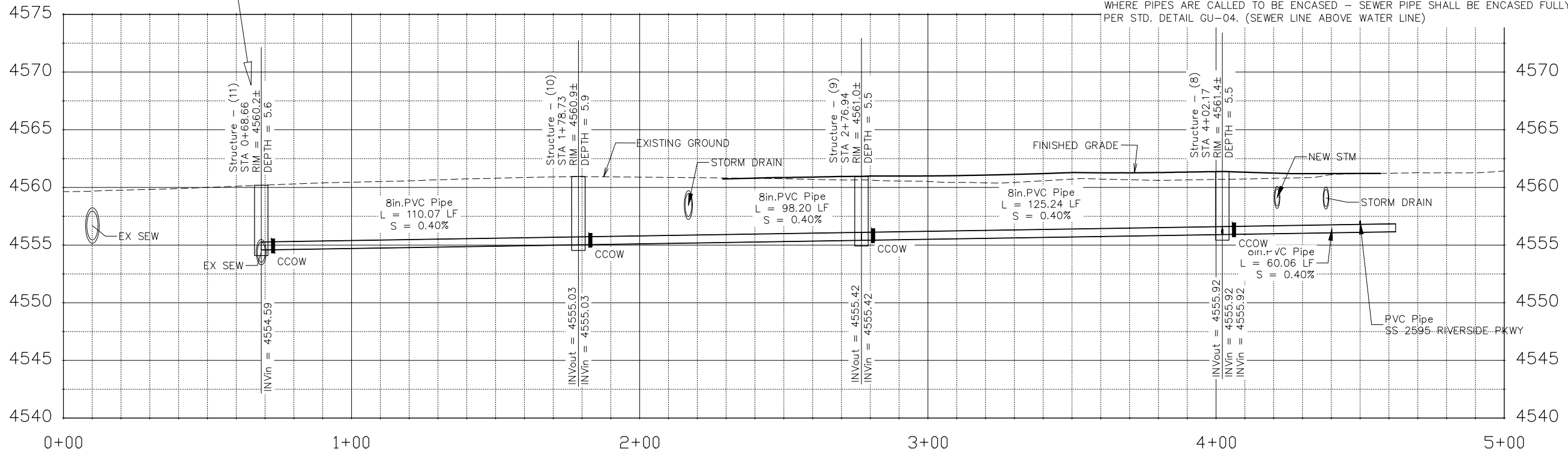
CLAY CUT OFF WALLS (CCOW) SHALL BE PLACED ON THE UPSTREAM PIPE SIDES OF ALL MANHOLES. (NO SEPARATE PAY)

▲ ALL SEWER SERVICE LINES SHALL BE 4" SDR-35 PVC

AT THE END OF ALL SEWER SERVICES INSTALL 2-WAY SANITARY SEWER SERVICE CLEANOUT (SSCO) (STD. DETAIL SS-07). INCLUDES CLEANOUT RING AND COVER AND CONCRETE COLLAR IN UNPAVED AREAS (SEE STD. DETAIL SS-07).

WHERE PIPES ARE CALLED TO HAVE A NEW CAP, CAP TOP HALF OF SEWER IN CONCRETE PER STD. DETAIL GU-04. (WATER LINE LESS THAN 18" ABOVE SEWER LINE)

WHERE PIPES ARE CALLED TO BE ENCASED - SEWER PIPE SHALL BE ENCASED FULLY IN CONCRETE PER STD. DETAIL GU-04. (SEWER LINE ABOVE WATER LINE)



REVISION	DESCRIPTION	DATE
REVISION Δ	SEWER SERVICE SIZE CLARIFICATION	3/14/19
REVISION Δ		
REVISION Δ		
REVISION Δ		

DRAWN BY	JCS	DATE	2018
DESIGNED BY	JCS	DATE	2018
CHECKED BY	TCP	DATE	2018
APPROVED BY	TCP	DATE	2018

SCALES:

PLAN & PROFILE

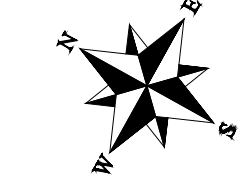
0 10 HORIZONTAL 20 40

0 2.5 VERTICAL 10



PUBLIC WORKS  
ENGINEERING DIVISION

THE RIVERFRONT AT DOS RIOS  
SANITARY SEWER PLAN AND PROFILE



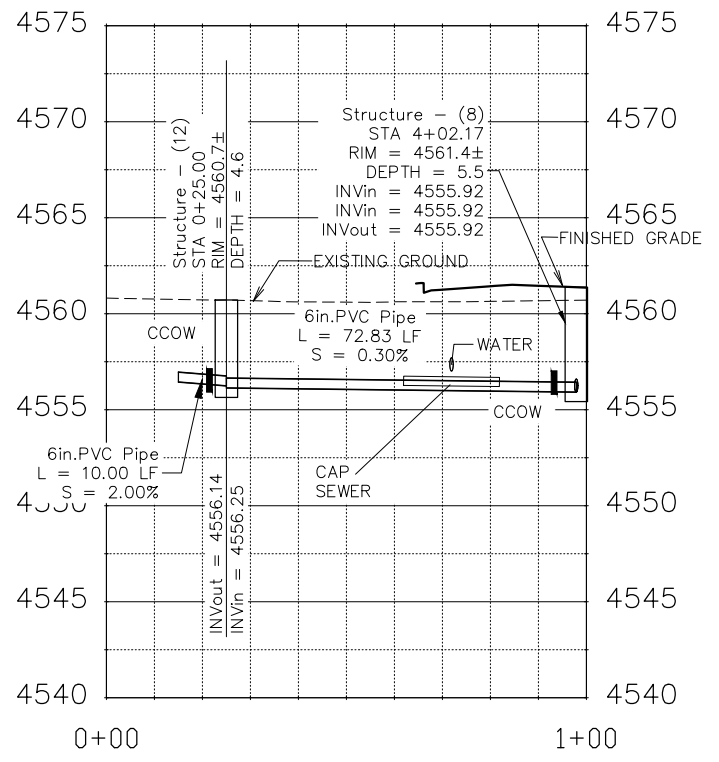
CAP END OF SEWER LINE AT LOCATION AS SHOWN. MARK END OF LINE WITH A 4X4 POST BURIED TO THE DEPTH OF THE PIPE AND EXTENDING ABOVE GROUND AT LEAST 3 FEET. PAINT EXPOSED PORTION OF 4X4 GREEN.

Structure - (12)  
STA 0+25.00, -0.02  
N 33031.38  
E 89189.95

Structure - (8)  
STA 4+02.17, 0.05  
N 32967.45  
E 89224.83

SSCO  
4+62, 54 LT.  
INV 4557.34

SS TAP  
4+50, 0 RT.  
INV 4556.78



NOTES:

- ALL NEW SANITARY SEWER MANHOLES (SSMH) SHALL BE SIZED AS NOTED INCLUDES CONNECTION OF ADJACENT SEWER LINE, FORMING INVERTS AND ADJUSTING TO FINAL GRADE. (SEE CITY OF GRAND JUNCTION STANDARD DETAIL SS-02).
- ALL SEWER PIPE SHALL BE SIZED PER PLAN NOTES AND BE SDR-35 PVC. INCLUDES TYPE A BEDDING AND HAUNCHING MATERIAL AND BACKFILL OF TRENCH WITH NATIVE MATERIALS MEETING 103.16 EARTH BACKFILL MATERIAL.
- CLAY CUT OFF WALLS (CCOW) SHALL BE PLACED ON THE UPSTREAM PIPE SIDES OF ALL MANHOLES. (NO SEPARATE PAY)
- △ ALL SEWER SERVICE LINES SHALL BE 4" SDR-35 PVC
- WHERE PIPES ARE CALLED TO HAVE A NEW CAP, CAP TOP HALF OF SEWER IN CONCRETE PER STD. DETAIL GU-04. (WATER LINE LESS THAN 18" ABOVE SEWER LINE)

REVISION	DESCRIPTION	DATE
△	SEWER SERVICE SIZE CLARIFICATION	3/14/19
△		
△		
△		

DRAWN BY JCS DATE 2018  
 DESIGNED BY JCS DATE 2018  
 CHECKED BY TCP DATE 2018  
 APPROVED BY TCP DATE 2018

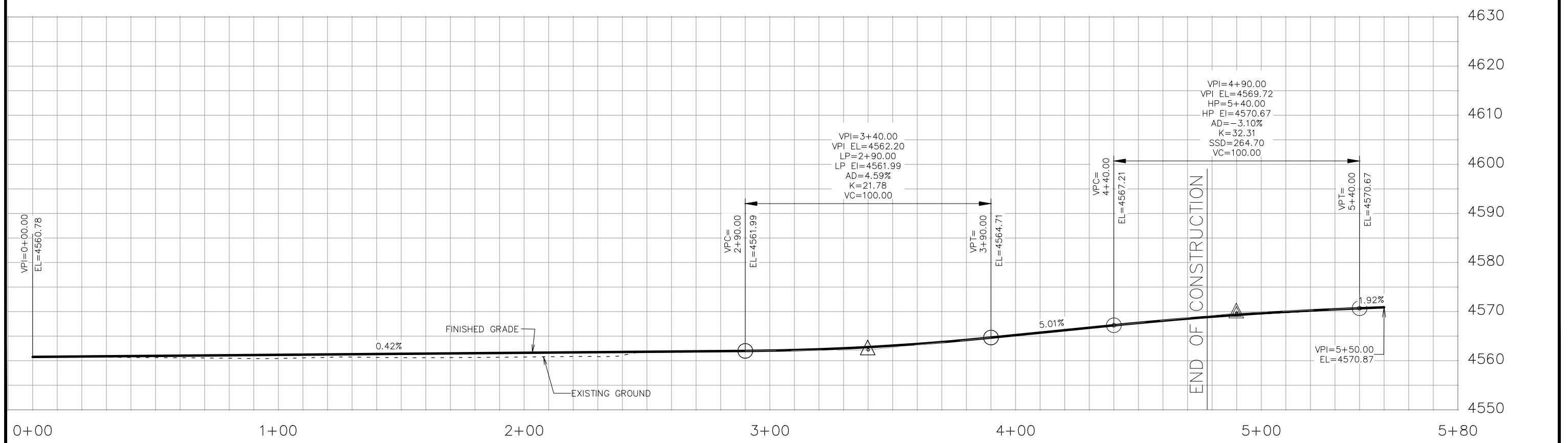
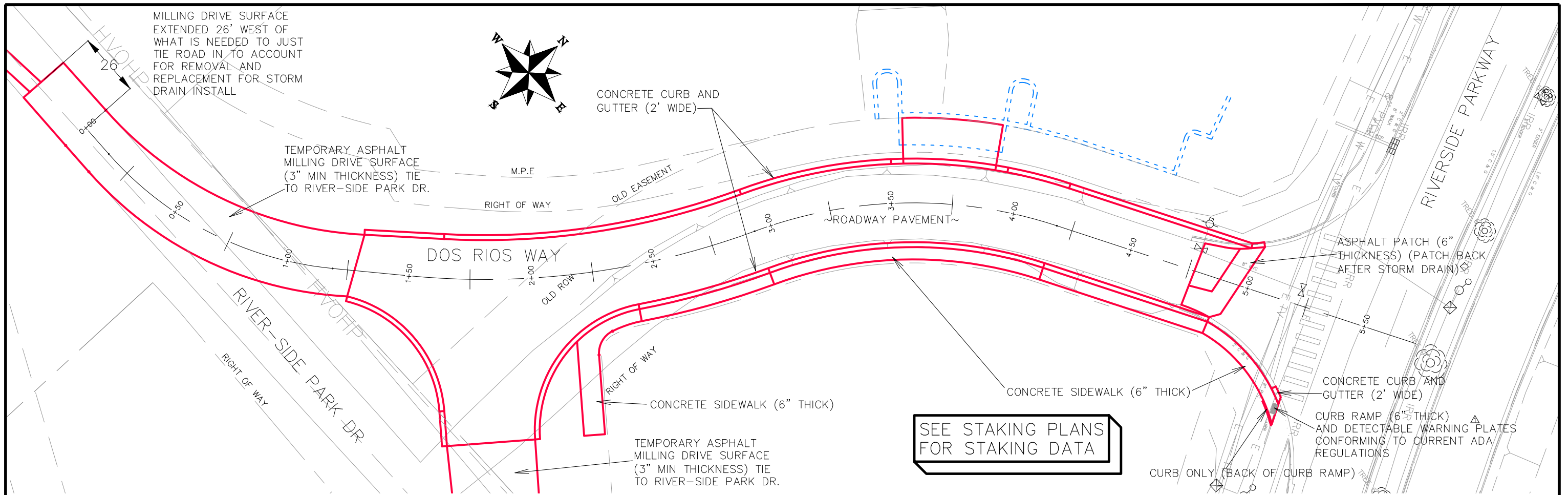
SCALES:

0	10	20	40
HORIZONTAL			
0	2.5	10	
VERTICAL			



PUBLIC WORKS  
ENGINEERING DIVISION

THE RIVERFRONT AT DOS RIOS  
SANITARY SEWER PLAN AND PROFILE



REVISION	DESCRIPTION	DATE
REVISION $\Delta$	ADD DET. WARN PLATES TO RAMP	3-14-19
REVISION $\Delta$		
REVISION $\Delta$		
REVISION $\Delta$		

DRAWN BY	JCS	DATE	2018
DESIGNED BY	JCS	DATE	2018
CHECKED BY	TCP	DATE	2018
APPROVED BY	TCP	DATE	2018

SCALES:	
0 10 20 40	HORIZONTAL
0 5 20	VERTICAL



**PUBLIC WORKS  
ENGINEERING DIVISION**


**THE RIVERFRONT AT DOS RIOS  
ROAD PLAN AND PROFILE**




STREET LIGHTING GENERAL NOTES:

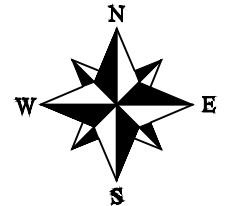
1. THIS PROJECT WILL BE BID FOR THE INSTALLATION OF STREET LIGHTING. BASE PROJECT: COMPLETE THE MAIN ENTRANCE STREET LIGHTING ALONG DOS RIOS WAY.
2. THIS PROJECT CONSISTS OF WORK TO INSTALL ALL WIRING, CONDUIT, PULL BOXES, AND POWER PANEL. REFERENCE SCHEDULE OF LIGHTING DEVICES AND SUMMARY OF QUANTITIES DRAWING E2.
3. TYPES "SB" LIGHT STANDARD & LUMINARIES (PEDESTRIAN AND STREET LIGHT), SHALL INCLUDE THE FOLLOWING ITEMS FROM VISUAL INTEREST LIGHTING LOCATED AT 3444 BRIGHTON BLVD, DENVER, CO 80216, 303.861.8448.
5. TYPE "SB" PHILLIP GARDCO GLI 8-1-2-230LA-9680-NW-UNV-BLP-LF-PC-RPA2, PROVIDE COLLISION BREAK AWAY CONNECTORS. FIXTURE TO BE 27' ABOVE FINISHED GRADE TO BOTTOM OF LIGHT. POLE - #G18 BLP 401-5011-27-D1-AB-TBK(GARDCO BLACK) BAC-.75-SET(GARDCO,LYTEP) MOUNTING TO 5" ROUND STRAIGHT POLE.
6. PROVIDE 1 TOTAL NEW MILL BANK PANELS (PP1), 208V, 3PH, 4W 200A , #CP3B5251XB22C5SL1 LOCATED AS SHOWN IN DRAWINGS.
7. ALL STREET LIGHTING FIXTURES(TYPE "SB") WILL EACH BE ORDERED WITH THEIR OWN PHOTOCCELL INSTALLED IN THE FIXTURE, AND POWERED WITH NEW 208 VOLT 3PHASE MILBANK POWER PEDESTAL ON UN-SWITCHED SECTION.
8. PROVIDE 2-2" PVC SCHEDULE 80 CONDUIT WITH PULL STRING FROM "PP1" TO FUTURE SOUTH JBOX AS SHOWN IN DRAWINGS.
9. LIGHTING FOUNDATIONS SHALL BE CONSTRUCTED PER THE MANUFACTURERS RECOMMENDATIONS.
10. PULL BOXES "UB" FOR LIGHT STANDARD (PEDESTRIAN AND STREET) WILL BE TYPE 1 CDOT PULL BOXES 11"X18"X12".
11. PULL BOXES "UB" WILL BE INSTALLED IN GRADES WITHOUT CONCRETE WHERE POSSIBLE.
12. ALL ELECTRICAL CONDUIT SHALL BE SCHEDULE 80 PVC UNLESS NOTED OTHERWISE, TYPICAL.
13. UNLESS OTHERWISE NOTED, THE WORK DESCRIBED ON THE PLANS SHALL INCLUDE PROVIDING ALL LABOR AND MATERIALS NECESSARY FOR A COMPLETE AND OPERATIONAL ELECTRICAL SYSTEM. FURNISH ALL REQUIRED ITEMS WHETHER SUCH ARE SPECIFICALLY SHOWN OR NOT.
14. INFORMATION SHOWN ON DRAWINGS IS DIAGRAMMATIC ONLY AND SHALL NOT BE SCALED. OBTAIN VERIFY EXACT LOCATIONS, MEASUREMENTS, LEVELS, SPACE REQUIREMENTS, POTENTIAL CONFLICTS AMONG TRADES AND FOR ADJUSTING THE WORK REQUIRED BY THE ACTUAL CONDITIONS OF THE PROJECT. CONTRACTOR IS RESPONSIBLE FOR LOCATING ALL UNDER GROUND OBSTRUCTIONS AND MAKING ALLOWANCES FOR FIELD ADJUSTMENT OF LOCATION OF LUMINARIES TO AVOID SHUT DOWN OF ANY SERVICES OR SYSTEMS THAT ARE TO REMAIN.
15. BEFORE SUBMITTING THE BID ELECTRICAL CONTRACTOR SHALL VISIT AND EXAMINE THE PREMISES AND/OR JOB SITE SO AS TO ASCERTAIN THE EXISTING CONDITIONS IN WHICH THE CONTRACTOR WILL BE OBLIGED TO OPERATE IN PERFORMING HIS PART OF THE CONTRACT TO ANTICIPATE ANY POSSIBLE SPACE RESTRICTIONS OR CONSTRAINTS THAT COULD AFFECT THE TIMELY COMPLETION OF THE ELECTRICAL WORK IN ACCORDANCE WITH THE INTENT OF THE SPECIFICATIONS AND DRAWINGS. THE ELECTRICAL CONTRACTOR SHALL REPORT TO THE THE PROJECT ENGINEER OR GENERAL CONTRACTOR ANY CONDITIONS THAT MIGHT PREVENT THE SPECIFIED ELECTRICAL WORK FROM BEING PERFORMED IN THE MANNER INTENDED. NO CONSIDERATION OR ALLOWANCE WILL BE GRANTED TO THE ELECTRICAL CONTRACTOR FOR FAILURE TO VISIT THE PROJECT SITE, OR FOR ANY ALLEGED MISUNDERSTANDING OF THE MATERIALS TO BE FURNISHED OR WORK TO BE DONE..
16. THE ELECTRICAL CONTRACTOR SHALL EXAMINE THE DRAWINGS OF ALL TRADES WHOSE WORK RELATES TO OR IS DEPENDENT ON ELECTRICAL WORK TO BECOME FULLY INFORMED OF THE EXTENT AND CHARACTER OF THEIR SPECIFIED WORK AND BE ABLE TO COORDINATE WITH OTHER TRADES WHILE AVOIDING POSSIBLE INTERFERENCE WITH THE ELECTRICAL WORK.
17. THE CONTRACTOR SHALL USE CONDUIT PLUGS AND SEALING PLUGS FOR SEALING ALL EMPTY CONDUITS AND CONDUITS OCCUPIED WITH CABLING, RESPECTIVELY, INSTALLED UNDER THIS CONTRACT. CONDUIT PLUGS SHALL BE MANUFACTURED FROM HIGH-IMPACT PLASTIC COMPONENTS, COMBINED WITH DURABLE ELASTIC GASKETS. THEY SHALL BE CORROSION PROOF AND APPROPRIATE FOR USE AS EITHER A LONG-TERM OR TEMPORARY SEAL. CONDUIT PLUGS SHALL BE REMOVABLE AND REUSABLE. THEY SHALL BE BOTH WATERTIGHT AND AIRTIGHT TO PREVENT THE FLOW OF WATER AND BUILDUP OF SEDIMENTATION WITHIN THE CONDUIT. EACH CONDUIT PLUG SHALL BE EQUIPPED WITH A ROPE TIE DEVICE TO ALLOW THE SECURING OF PULL ROPE TO THE PLUG'S BACK COMPRESSION PLATE. THE CONTRACTOR SHALL ATTACH THE PULL ROPE TO THE BACK COMPRESSION PLATE OF THE PLUG AND STORE EXCESS SLACK PULL ROPE BEHIND THE PLUG WITHIN THE CONDUIT FOR FUTURE USE.

PP1-X ELECTRICAL CIRCUIT NUMBER (REFER TO PANEL SCHEDULES)

UB  HEAVY DUTY, TRAFFIC RATED, FLUSH-TO-GRADE POLYMER CONCRETE SPLICE BOX WITH HEAVY DUTY, TRAFFIC RATED, BOLTED COVER. 11"X18"X12" TYPE 1.

 UNDER GROUND BURIED RACEWAY (2#6 THWN CU AND 1#8 GND) IN 2" PVC CONDUIT (UNLESS NOTED OTHERWISE ON PLANS) IN 24" DEEP TRENCH, BURY AND COMPACTED BACKFILL TO CITY STANDARDS.

 INSTALL SINGLE ARM PEDESTRIAN STANDARD OR STREET STANDARD AS SPECIFIED.



Know what's below.  
Call before you dig.



**ACM CONSULTING**  
ELECTRICAL DESIGN, CONSULTING  
ENGINEERS; PH: 970-245-7292  
PO 3211 GRAND JCT., CO 81502  
EMAIL: joelm@ACMengrs.com

REVISION	DESCRIPTION	DATE	DRAWN BY	DATE
REVISION Δ			AJM	3-11-19
REVISION Δ			AJM	3-11-19
REVISION Δ			AJM	3-11-19
REVISION Δ			JT	3-11-19



PUBLIC WORKS  
ENGINEERING DIVISION

DOS RIOS WAY  
COVER SHEET PLAN

E1  
of 10

Schedule of Lighting Devices						
DESCRIPTION				FOUNDATION SPECIAL EACH	LUMINAIRE LED STREET (250 WATT) EACH	NOTES
		Y	X			
SHEET NO.	TYPE	NORTH	EAST	PLAN	PLAN	
E3	SB-1	32944.90	89099.02	1	1	1
E3	SB-2	32950.61	89297.31	1	1	1
E3	SB-3	33002.87	89212.11	1	1	1
E4	SB-4	33104.66	89271.95	1	1	1
E4	SB-5	33191.49	89381.14	1	1	1
TABLE TOTALS				5	5	

SCHEDULE OF LIGHTING DEVICES NOTES:  
1. FOUNDATION TOP HEIGHT EQUAL TO ADJACENT SIDEWALK

Tabulation of Approximate Quantities					
Item No.	Ref. No.	Construction Note Description	Quantity	Unit	NOTES
	613-01200	2 Inch Electrical Conduit (Plastic)	744	LF	
	613-07001	Type One Pull Box	9	EA	
	613-10000	Wiring	1	LS	
	613-40012	Light Standard Foundation (Special)	5	EA	
	613-50106	Lighting Control Center (Special)	1	EA	
SUMMARY NOTES:					
1					

STREET LIGHTING GENERAL NOTES:

- EACH LIGHT TO HAVE A PULL BOX "UB", REFERENCE ELECTRICAL SHEETS.



Know what's below.  
Call before you dig.



**ACM CONSULTING**  
ELECTRICAL DESIGN, CONSULTING ENGINEERS; PH: 970-245-7292  
PO 3211 GRAND JCT., CO 81502  
EMAIL: joelm@ACMengrs.com

REVISION	DESCRIPTION	DATE	DRAWN BY	DATE
REVISION Δ			AJM	3-11-19
REVISION Δ			AJM	3-11-19
REVISION Δ			AJM	3-11-19
REVISION Δ			JT	3-11-19

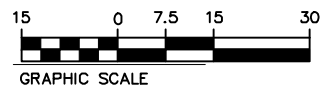
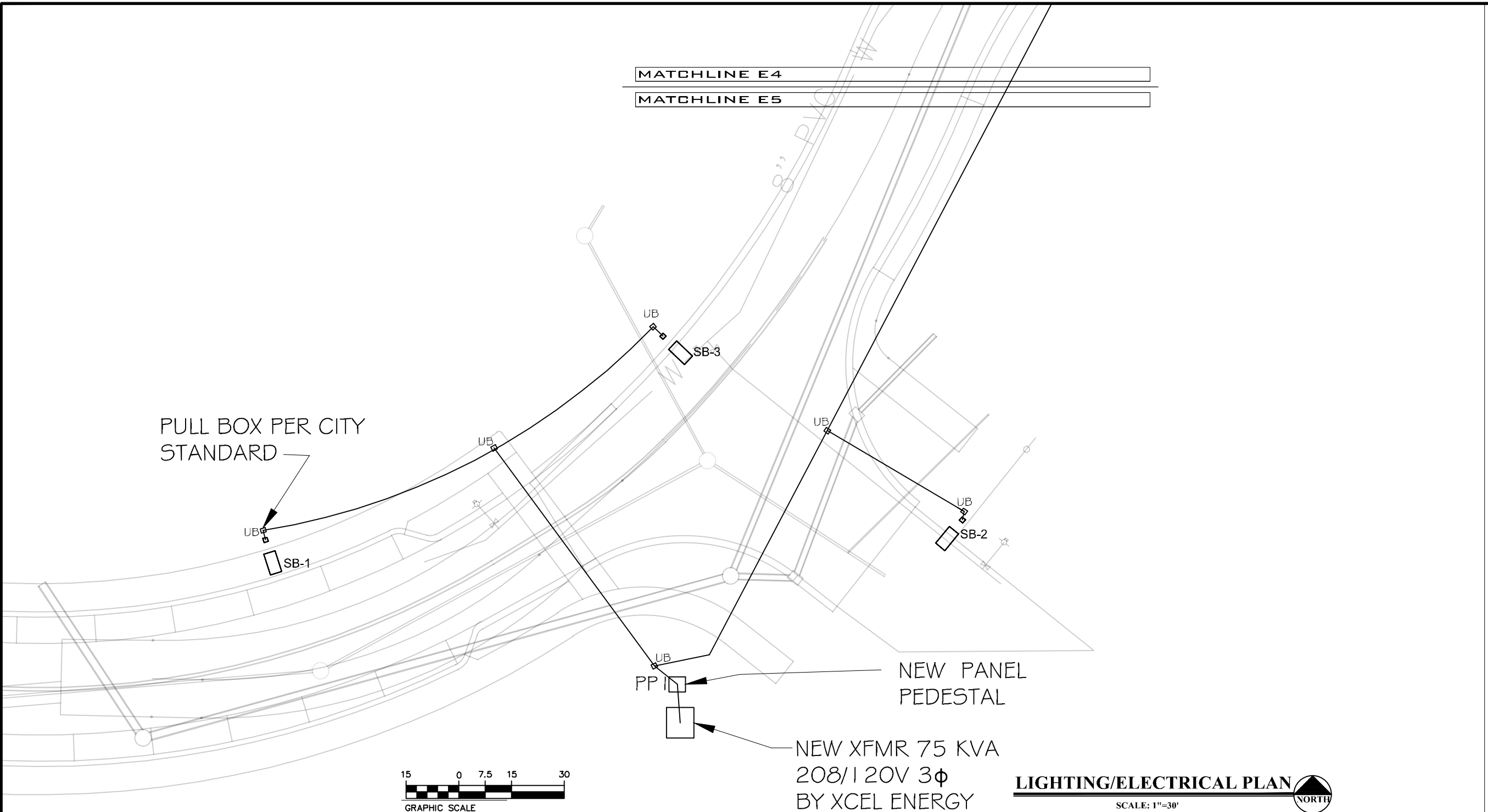


PUBLIC WORKS  
ENGINEERING DIVISION

DOS RIOS WAY  
LIGHTING SCHEDULES

MATCHLINE E4  
 MATCHLINE E5

PULL BOX PER CITY STANDARD



NEW XFMR 75 KVA  
 208/120V 3 $\phi$   
 BY XCEL ENERGY

**LIGHTING/ELECTRICAL PLAN**  
 SCALE: 1"=30'

- GENERAL NOTES:
1. POWER CIRCUIT AS SHOWN ON DRAWING, TYPICAL.
  2. LIGHT TO BE ORIENTED TO BE PERPENDICULAR TO ROADWAY AND SHINE ON ROADWAY, TYPICAL.
  3. PROVIDE 2-#6 THWN + #8GND IN 2" PVC SCHEDULE 80 CONDUIT BETWEEN PULL BOXES UNLESS SHOWN OTHERWISE, TYPICAL.



Know what's below.  
 Call before you dig.

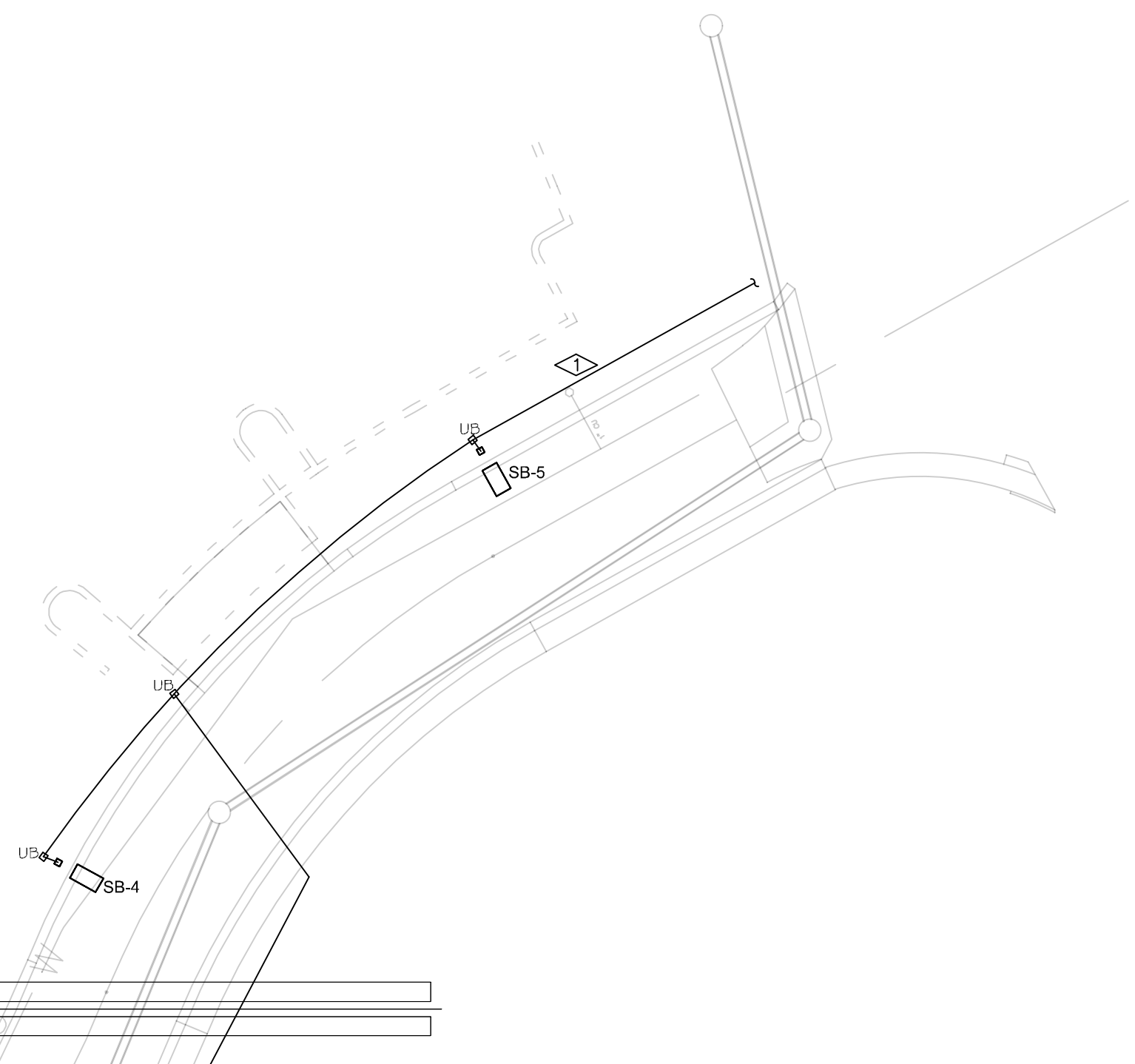
**ACM CONSULTING**  
 ELECTRICAL DESIGN, CONSULTING  
 ENGINEERS; PH: 970-245-7292  
 PO 3211 GRAND JCT., CO 81502  
 EMAIL: joelm@ACMengrs.com

REVISION	DESCRIPTION	DATE	DRAWN BY	DATE
REVISION $\Delta$			AJM	3-11-19
REVISION $\Delta$			AJM	3-11-19
REVISION $\Delta$			AJM	3-11-19
REVISION $\Delta$			JT	3-11-19



PUBLIC WORKS  
 ENGINEERING DIVISION

DOS RIOS WAY  
 COMPOSITE UTILITY PLAN



**LIGHTING/ELECTRICAL PLAN**

SCALE: 1"=30'

GENERAL NOTES:

1. POWER CIRCUIT AS SHOWN ON DRAWING, TYPICAL.
2. LIGHT TO BE ORIENTED TO BE PERPENDICULAR TO ROADWAY AND SHINE ON ROADWAY, TYPICAL.
3. PROVIDE 2-#6 THWN + #8GND IN 2" PVC SCHEDULE 80 CONDUIT BETWEEN PULL BOXES UNLESS SHOWN OTHERWISE, TYPICAL.

FLAG NOTES:

- 1 CONTINUE JOINT TRENCH COORDINATE WITH XCEL ENERGY, BROADBAND AND COMCAST FOR EXACT LOCATION.



Know what's below.  
Call before you dig.



**ACM CONSULTING**  
ELECTRICAL DESIGN, CONSULTING  
ENGINEERS; PH: 970-245-7292  
PO 3211 GRAND JCT., CO 81502  
EMAIL: joelm@ACMengrs.com

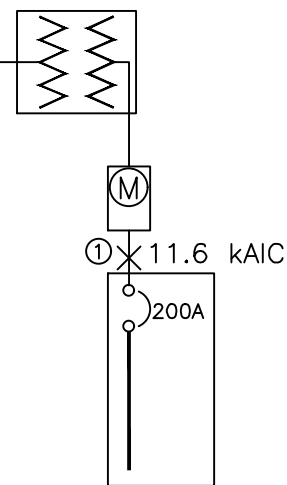
REVISION	DESCRIPTION	DATE	DRAWN BY	DATE
REVISION Δ			AJM	3-11-19
REVISION Δ			AJM	3-11-19
REVISION Δ			AJM	3-11-19
REVISION Δ			JT	3-11-19



PUBLIC WORKS  
ENGINEERING DIVISION

DOS RIOS WAY  
COMPOSITE UTILITY PLAN

NEW PAD MOUNTED  
TRANSFORMER 75KVA  
208/120 VOLT, 3PH 4W  
BY XCEL



PP1 200A MCB MILBANK PEDESTAL  
CP3B5251XB22CSSL1, 24  
UNSWITCHED/12 SWITCHED CKTS  
208/120V 3PH, 4W  
22 KAIC

① 1 SET(S)[2.5" PVC  
SCHED. 80  
(4#3/0(CU,THWN)+1#4(CU)GND]

**ONE-LINE DIAGRAM**  
A  
1  
NOT TO SCALE

GENERAL NOTES:

1. IN AS MUCH AS DESIGN REQUIRES THAT CERTAIN ASSUMPTIONS BE MADE REGARDING EXISTING CONDITIONS, AND BECAUSE SOME OF THESE ASSUMPTIONS CANNOT BE VERIFIED. FIELD COORDINATION DURING CONSTRUCTION SERVICES IS IMPERATIVE. CONTRACTORS BIDDING THIS WORK MUST MAKE REASONABLE ALLOWANCES FOR UNFORESEEN CONTINGENCIES.
2. THE SERVING ELECTRICAL ASSOCIATION SHALL ADVISE THE OWNER/ENGINEER PRIOR TO SERVICE MODIFICATION REQUIRING COST TO THE OWNER.
3. REFERENCE CIVIL, LANDSCAPE AND IRRIGATION DRAWING PLANS FOR COORDINATION AND LOCATION OF ALL UNDER GROUND SYSTEMS.
4. ALL WORK SHALL BE COORDINATED WITH OTHER TRADES AS REQUIRED: REFERENCE CIVIL LANDSCAPE AND IRRIGATION DRAWINGS.
5. ALL WIRING IS SHOWN DIAGRAMMATICALLY ON DRAWINGS, FIELD VERIFY ALL CONDITIONS PRIOR TO ROUGH-IN.
6. ALL ELECTRICAL WORK SHALL COMPLY WITH THE LATEST EDITION OF NATIONAL ELECTRICAL CODE AND ALL APPLICABLE LOCAL CODES.
7. ALL WIRE TO BE #6 UNLESS NOTED OTHERWISE.
8. CONDUCTOR COUNT IS SHOWN FOR REFERENCE ONLY. CONTRACTOR SHALL ENSURE THAT ANY AND ALL DEVICES AND EQUIPMENT ARE CIRCUITED PROPERLY. CONTRACTOR SHALL ENSURE THAT NO EQUIPMENT OR DEVICES ARE COMBINED OTHER THAN WHAT IS DEPICTED.
9. FIELD VERIFY ALL DIMENSIONS. DO NOT SCALE DRAWINGS.
10. COORDINATE INSTALLATION OF METER AND ELECTRICAL REQUIREMENTS WITH XCEL ENERGY.
11. PEDESTAL MUST MEET ALL XCEL ENERGY REQUIREMENTS I.E. COLD SEQUENCE PADLOCK SLIP LATCH ON METER COVER, HOLD OPEN BAR ON METER HOOD.



Know what's below.  
Call before you dig.



**ACM CONSULTING**  
ELECTRICAL DESIGN, CONSULTING  
ENGINEERS; PH: 970-245-7292  
PO 3211 GRAND JCT., CO 81502  
EMAIL: joelm@ACMengrs.com

REVISION	DESCRIPTION	DATE	DRAWN BY	DATE
REVISION Δ			AJM	3-11-19
REVISION Δ			AJM	3-11-19
REVISION Δ			AJM	3-11-19
REVISION Δ			JT	3-11-19



PUBLIC WORKS  
ENGINEERING DIVISION

DOS RIOS WAY  
ONE-LINE DIAGRAMS

**Panel Schedule PP1**

<b>Circuit Information::</b>	<b>Protection Information::</b>	<b>Conductor Information::</b>	Calculated Kaic: 12.5
Circuits: 30 UNSWITCHED/12 SWITCHED	Frame Size: 200A	Conductor: 3/0	
Voltage: 120 / 208	Load (A): 21	Neutral: 3/0	
System: 3Ø,	NEMA: Type 3R	Ground: 1-2 ga.	
Hertz: 60	OCPD Size: 200A	Insulation: THWN	
	22 Kaic	Material: Copper	
		Raceway: 3 in. - PVC SCHED 80	

UN-SWITCHED CIRCUIT DIRECTORY

Ct#	Load Description	OCPD Size / Ø	Load - kVA			L	CØ	Load - kVA		OCPD Size / Ø	Load Description	Ct#
			AØ	BØ	CØ			BØ	AØ			
1	MAIN	200A /3				L1		0.18		15A /2	CONTROL POWER	2
3	---					L2			0.3	60A /2	SWITCHED LC CONTROL	4
5	---					L3	0.3				---	6
7	STREET LIGHTS	20A/2			1.15	L1						8
9	---	20A/2	1.15			L2				20A/1	SPARE(FUTURE)	10
11	SPARE(FUTURE)	20A/2				L3				20A/1	SPARE(FUTURE)	12
13	SPARE(FUTURE)	20A/2				L1				20A/1	SPARE(FUTURE)	14
15	SPARE(FUTURE)	20A/2				L2				20A/1	SPARE(FUTURE)	16
17	SPARE(FUTURE)	20A/2				L3				20A/1	SPARE(FUTURE)	18
19	SPARE(FUTURE)	20A/2				L1						20
21						L2						22
23						L3						24
25						L1						26
27						L2						28
29						L3						30

SWITCHED CIRCUIT DIRECTORY

Ct#	Load Description	OCPD Size / Ø	Load - kVA			L	CØ	Load - kVA		OCPD Size / Ø	Load Description	Ct#
			AØ	BØ	CØ			BØ	AØ			
31	SPARE(FUTURE)	20A /2				L1				20A /2	SPARE(FUTURE)	32
33	---					L2					---	34
35	SPARE(FUTURE)	20A /2				L3					SPARE(FUTURE)	36
37	---					L1						38
39						L2						40
41						L3						42
Phase Totals - kVA:			1.15	0	0		0.3	0.3	0.18			
						Load Totals		Amps:	kVA:			
								5.4	1.93			



Know what's below.  
Call before you dig.

**ACM CONSULTING**  
ELECTRICAL DESIGN, CONSULTING ENGINEERS; PH: 970-245-7292  
PO 3211 GRAND JCT., CO 81502  
EMAIL: joelm@ACMengrs.com

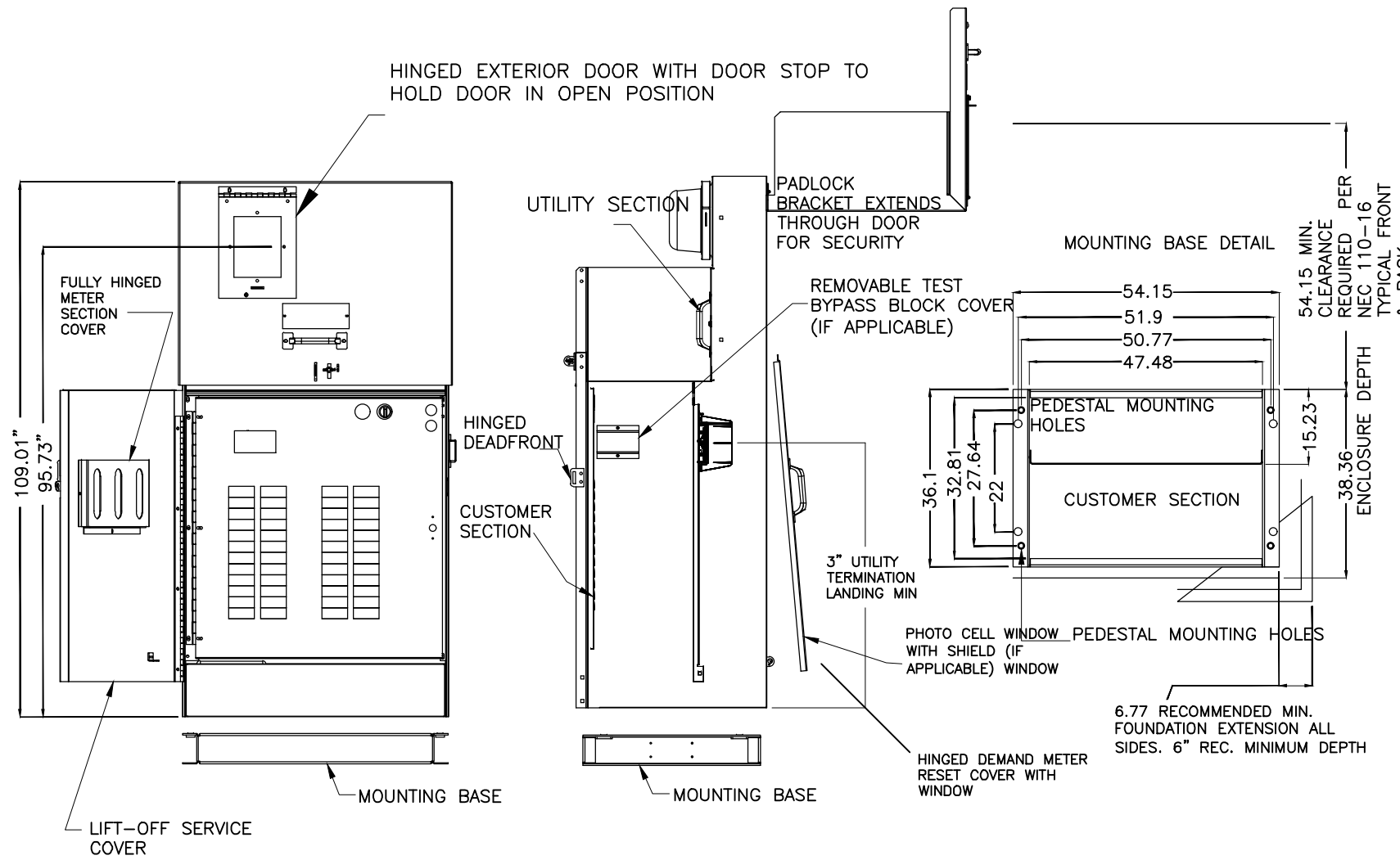
REVISION	DESCRIPTION	DATE	DRAWN BY	DATE
△		7-24-18	AJM	3-11-19
△			AJM	3-11-19
△			AJM	3-11-19
△			JT	3-11-19



PUBLIC WORKS  
ENGINEERING DIVISION

DOS RIOS WAY  
PANEL SCHEDULES

**24" COMMERCIAL PEDESTAL**



**B** TYPICAL 3-PHASE POWER PEDESTAL/LIGHTING CONTROL CENTER PLAN  
**1** NOT TO SCALE

**NOTES**

1. COORDINATE EXACT INSTALATION REQUIREMENTS WITH PROVIDER PRIOR TO ROUGH-IN OR TRENCHING. CONTROL CABINET SHALL BE U/L LISTED "INDUSTRIAL CONTROL PANEL" PER UL 508.
2. CONSTRUCTION SHALL BE NEMA 3R. 12 GA. A60 STEEL POWDER COATED MINT GREEN WITH PHOTO ELECTRIC CELL IN SERVICE CABINET. ELECTRICAL CONTRACTOR TO PROVIDE PHOTOCCELL.
3. VOLTAGE RATINGS OF SERVICE EQUIPMENT SHALL CONFORM TO THE SERVICE VOLTAGES INDICATED ON THE PLANS.
4. SERVICE EQUIPMENT ENCLOSURE AND METERING EQUIPMENT SHALL MEET THE REQUIREMENTS OF THE SERVING UTILITY. WHEN THE SERVING UTILITY PROVIDES BOTH METERED AND UNMETERED CIRCUITS, A SEPARATE BUS SHALL BE PROVIDED FOR EACH CIRCUIT. THE METER AREA SHALL HAVE A SEALING, LOCKABLE, RAIN TIGHT COVER THAT CAN BE REMOVED WITHOUT THE USE OF TOOLS.
5. SERVICE EQUIPMENT SHALL BE FACTORY WIRED AND CONFORM TO NEMA STANDARDS.
6. THE EXTERIOR DOOR SHALL HAVE PROVISIONS FOR PADLOCKING. THE PADLOCK HOLE SHALL BE A MINIMUM DIAMETER OF 11mm.
7. ALL TERMINALS FOR INCOMING SERVICE CONDUCTORS SHALL BE COMPATIBLE WITH EITHER COPPER OR ALUMINUM CONDUCTORS SIZED TO SUIT THE CONDUCTORS SHOWN ON THE PLAN. TERMINAL LUGS SHALL BE COPPER OR TIN-PLATED ALUMINUM. SOLID NEUTRAL TERMINAL STRIP SHALL BE RATED 200A UNLESS OTHERWISE SPECIFIED AND FOR USE WITH COPPER OR ALUMINUM CONDUCTORS. THE TERMINAL SHOULD INCLUDE BUT NOT BE LIMITED TO:
  - A) INCOMING TERMINALS (LANDING LUGS)
  - B) NEUTRAL LUGS
  - C) SOLID NEUTRAL TERMINAL STRIP.
  - D) TERMINAL STRIPS FOR CONDUCTORS WITHIN THE ENCLOSURE.
8. CIRCUIT BREAKER SPACES (20mm NOMINAL) SHALL BE PROVIDED FOR BRANCH CIRCUITS. CIRCUIT BREAKER INTERIORS SHALL BE COPPER. INTERIORS SHALL ACCEPT PLUG-IN OR CABLE-IN/ CABLE-OUT CIRCUIT BREAKERS.
9. PLUG-IN CIRCUIT BREAKERS MAY BE MOUNTED IN THE VERTICAL OR HORIZONTAL POSITION. CABLE-IN/ CABLE-OUT CIRCUIT BREAKERS SHALL BE MOUNTED IN THE VERTICAL POSITION.
10. FASTENERS ON THE EXTERIOR OF THE ENCLOSURE SHALL BE VANDAL RESISTANT AND SHALL NOT BE REMOVABLE FROM THE EXTERIOR. ALL NUTS, BOLTS, SCREWS, WASHERS, AND HINGES SHALL BE STAINLESS STEEL.
11. PHENOLIC NAME PLATES SHALL BE PROVIDED AS REQUIRED.
12. A PLASTIC COVERED WIRING DIAGRAM SHALL BE ATTACHED TO THE INSIDE OF THE FRONT DOOR.
13. FOUNDATION SHALL EXTEND 50mm MINIMUM BEYOND EDGE OF ENCLOSURE.
14. PANEL WILL ADHERE TO XCEL ENERGY REQUIREMENT FOR COLD SEQUENCE DISCONNECTION.

REVISION	DESCRIPTION	DATE	DRAWN BY	DATE
△			AJM	3-11-19
△			AJM	3-11-19
△			AJM	3-11-19
△			JT	3-11-19



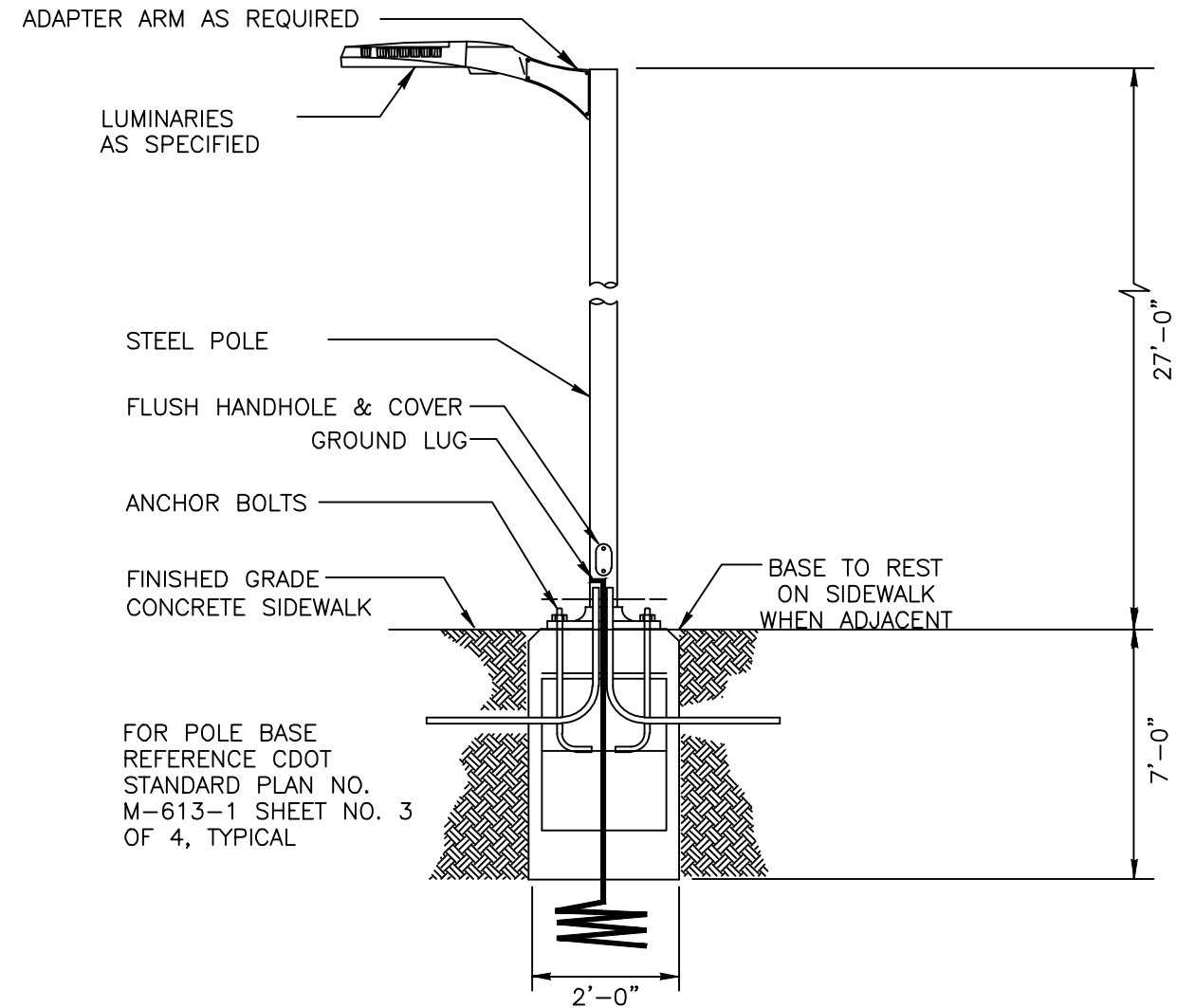
PUBLIC WORKS  
ENGINEERING DIVISION

DOS RIOS WAY  
PEDESTAL DETAILS



Know what's below.  
Call before you dig.

**ACM CONSULTING**  
ELECTRICAL DESIGN, CONSULTING ENGINEERS; PH: 970-245-7292  
PO 3211 GRAND JCT., CO 81502  
EMAIL: joelm@ACMengrs.com



## TYPICAL SB LIGHT DETAIL

NOT TO SCALE

GENERAL NOTES:

1. ELECTRICAL CONTRACTOR TO ORDER ALL REQUIRED HARDWARE FOR MOUNTING OF EACH LUMINARIES.
2. VERIFY THE BURY DEPTH AND DIAMETER OF THE SONOTUBE FOR POLE LUMINARIES WITH THE CIVIL ENGINEER PRIOR TO PURCHASING THE EQUIPMENT. DEPTH WILL DEPEND ON SOIL CONDITIONS. TYPICAL CONCRETE DEPTH IS 7 FT. VERIFY WITH CIVIL ENGINEER.
3. ELECTRICAL CONTRACTOR TO VERIFY THAT ALL FIXTURES TO COMPLY WITH LIGHT TRESPASS AND AND DARK SKY CODES.
4. NOTIFY ENGINEER OF ANY OBSTRUCTIONS TO POLE PLACEMENT IMMEDIATELY BEFORE PROCEEDING.
5. VERIFY REQUIRED VOLTAGE OF FOR EACH LUMINARIES WITH AVAILABLE VOLTAGES PRIOR TO ORDERING.
6. REFERENCE CDOT STANDARD PLAN NO. M-613-1 SHEET NO. 3 OF 4, TYPICAL



Know what's below.  
Call before you dig.



**ACM CONSULTING**  
ELECTRICAL DESIGN, CONSULTING  
ENGINEERS; PH: 970-245-7292  
PO 3211 GRAND JCT., CO 81502  
EMAIL: joelm@ACMengrs.com

REVISION	DESCRIPTION	DATE	DRAWN BY	DATE
REVISION Δ			AJM	3-11-19
REVISION Δ			AJM	3-11-19
REVISION Δ			AJM	3-11-19
REVISION Δ			JT	3-11-19

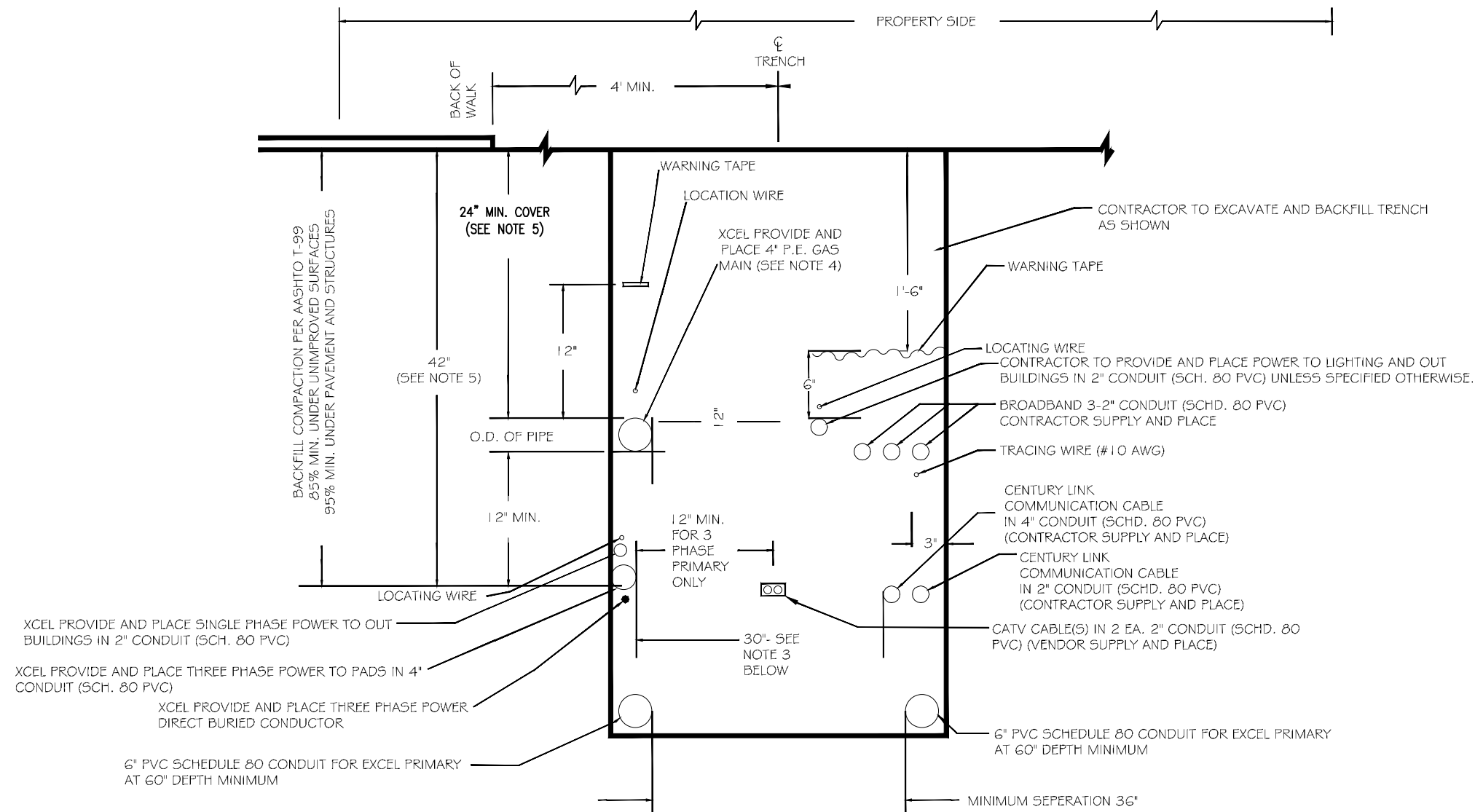
**CITY OF**  
**Grand Junction**  
COLORADO

PUBLIC WORKS  
ENGINEERING DIVISION

DOS RIOS WAY  
LIGHTING DETAILS

E8  
of 10





**GENERAL NOTES:**

1. FOR EASE OF CONSTRUCTION AND MAINTENANCE, PRIMARY CABLE SHOULD BE 12" TO 24" FROM COMMUNICATION CABLES. HOWEVER NESC REQUIREMENTS PERMIT "SUPPLY AND COMMUNICATION CABLES TO BE BURIED TOGETHER AT THE SAME DEPTH WITH NO DELIBERATE SEPARATIONS BETWEEN FACILITIES PROVIDED ALL PARTIES ARE IN AGREEMENT."
2. ONLY SINGLE PHASE SUPPLY CABLES CAN BE BURIED AT THE SAME DEPTH WITH NO DELIBERATE SEPARATION WITH COMMUNICATION CABLES. THREE PHASE CABLES MUST BE SEPARATED BY A MINIMUM OF 1 FOOT (REFERENCE NESC 354.D.3A).
3. 30" TRENCH WIDTH SHOULD BE USED WHEN ALL FOUR UTILITIES ARE INCLUDED.
4. STEEL GAS PIPE OR STEEL DUCT IS NOT ALLOWED FOR JOINT TRENCH CONSTRUCTION.
5. WHERE UNDERGROUND UTILITIES CROSS OR ENCR OACH INTO CITY STREETS THEY SHALL BE INSTALLED TO A DEPTH PROVIDING 3' MINIMUM COVER BELOW FINISHED GRADE.

**TYPICAL COMMON TRENCH DETAIL PROPERTY SIDE**

NOT TO SCALE



Know what's below.  
Call before you dig.



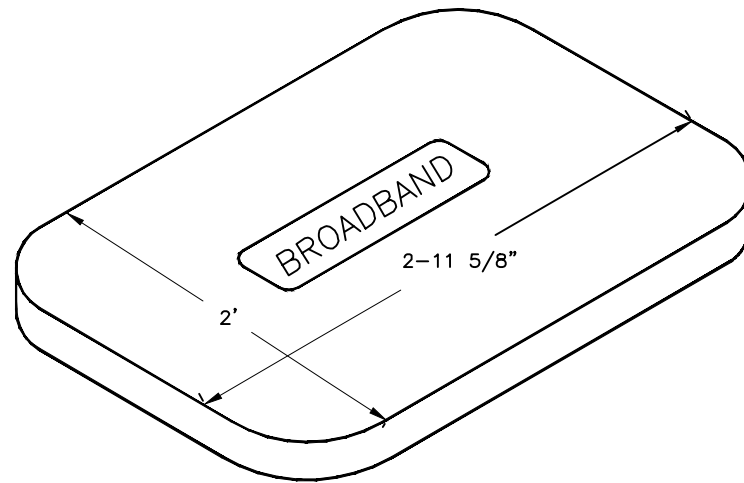
**ACM CONSULTING**  
ELECTRICAL DESIGN, CONSULTING  
ENGINEERS; PH: 970-245-7292  
PO 3211 GRAND JCT., CO 81502  
EMAIL: joelm@ACMengrs.com

REVISION	DESCRIPTION	DATE	DRAWN BY	DATE
REVISION Δ			AJM	3-11-19
REVISION Δ			AJM	3-11-19
REVISION Δ			AJM	3-11-19
REVISION Δ			JT	3-11-19



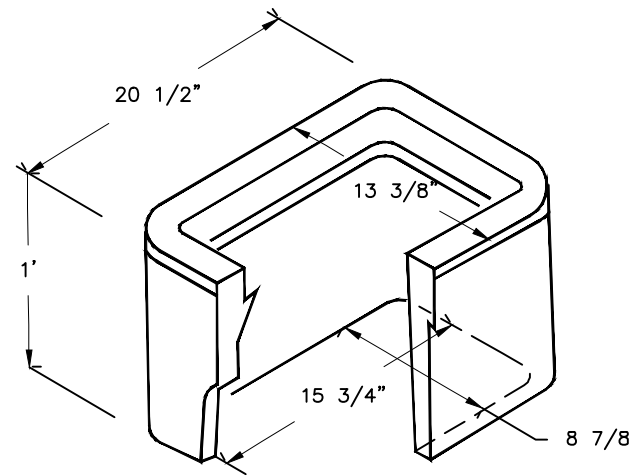
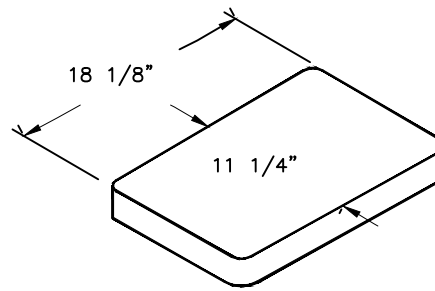
PUBLIC WORKS  
ENGINEERING DIVISION

DOS RIOS WAY  
UTILITY DETAILS DETAILS



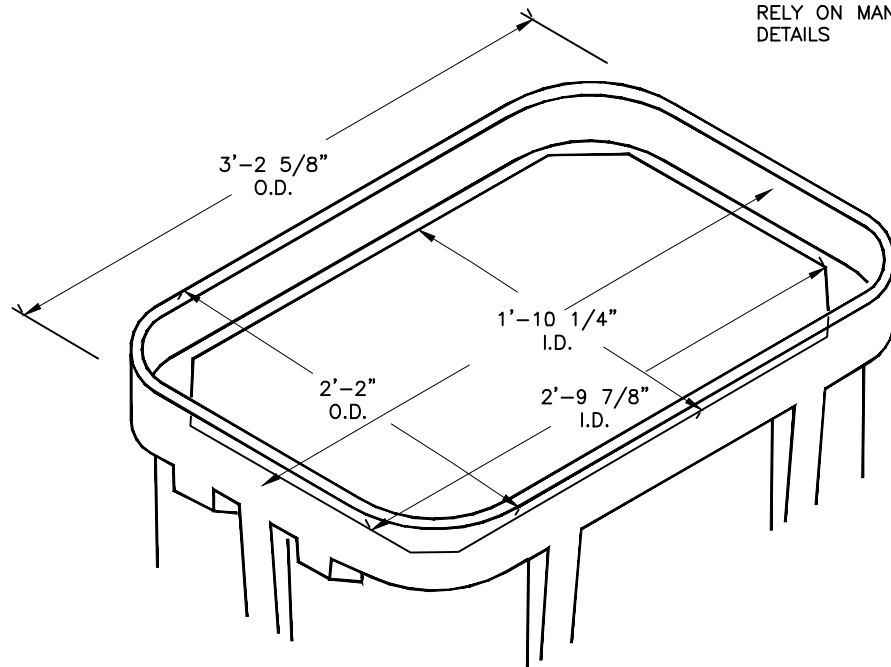
COVER

BROADBAND PULL BOX  
(HUBBEL QUAZITE BOX) (BOX  
PART NO PG2436BA30) COVER  
PART NO PG2436HA00) OR  
ENGINEER APPROVED EQUAL  
DIMENSIONS SHOWN HERE FOR  
LAYOUT AND PLANNING  
PURPOSES. CONTRACTOR SHALL  
RELY ON MANUFACTURER  
DETAILS



STREET LIGHT AND  
PEDESTRIAN LIGHT PULL  
BOX

DIMENSIONS SHOWN HERE FOR  
LAYOUT AND PLANNING  
PURPOSES. CONTRACTOR SHALL  
RELY ON MANUFACTURER  
DETAILS



BOX

BROADBAND PULL BOX  
DIMENSIONS SHOWN HERE FOR  
LAYOUT AND PLANNING  
PURPOSES. CONTRACTOR SHALL  
RELY ON MANUFACTURER  
DETAILS

GENERAL NOTES:

- PULL BOXES, PULL BOX COVERS AND EXTENSIONS SHALL BE MADE OF FIBERGLASS REINFORCED POLYMER CONCRETE. PULL BOXES SHALL BE VERIFIED BY 3RD PARTY NATIONALLY RECOGNIZED INDEPENDENT TESTING LABORATORY AS MEETING ALL TEST PROVISIONS OF THE LATEST ANSI/SCTE 77 SPECIFICATION FOR UNDERGROUND ENCLOSURE INTEGRITY, TIER 22 RATING. CERTIFICATION DOCUMENTS SHALL BE SUBMITTED WITH MATERIALS SUBMITTALS. THE PULL BOX SHALL HAVE A DETACHABLE COVER WITH A SKID RESISTANT SURFACE AND HAVE THE WORDS ELECTRICAL CAST INTO THE SURFACE. FADING THE WORDS SHALL NOT BE ACCEPTED. MARKINGS SHOWING THE TIER 22 RATING MUST BE LABELED OR STENCILED ON THE INSIDE AND OUTSIDE OF THE BOX AND THE ON UNDER SIDE OF THE COVER. THE COVER SHALL BE ATTACHED TO THE PULL BOX BODY BY MEANS OF A MINIMUM 3/8-7 UNIFIED NATIONAL COURSE (UNC) STAINLESS STEEL PENTA HEAD BOLTS SHALL HAVE TWO LIFT SLOTS TO AIDE IN THE REMOVAL OF THE LID.
- PULL SLOTS SHALL BE RATED FOR A MINIMUM PULL OUT OF 3,000 POUNDS. MAGNESIUM CHLORIDE TESTS SHOULD BE PERFORMED IN ACCORDANCE WITH THE LATEST ANSI/SCTE 77 SPECIFICATION FOR UNDERGROUND ENCLOSURE INTEGRITY, TIER 22 RATING.

TYPICAL PULLBOX DETAIL

NOT TO SCALE



Know what's below.  
Call before you dig.



**ACM CONSULTING**  
ELECTRICAL DESIGN, CONSULTING  
ENGINEERS; PH: 970-245-7292  
PO 3211 GRAND JCT., CO 81502  
EMAIL: joelm@ACMengrs.com

REVISION	DESCRIPTION	DATE	DRAWN BY	DATE
REVISION			AJM	3-11-19
REVISION			AJM	3-11-19
REVISION			AJM	3-11-19
REVISION			JT	3-11-19



PUBLIC WORKS  
ENGINEERING DIVISION

DOS RIOS WAY  
UTILITY DETAILS DETAILS