



Purchasing Division

## **ADDENDUM NO. 5**

**DATE: March 26, 2019**  
**FROM: City of Grand Junction Purchasing Division**  
**TO: All Offerors**  
**RE: 2019 Monument Road Bicycle Path Trail IFB-4618-19-DH**

Offerors responding to the above referenced solicitation are hereby instructed that the requirements have been clarified, modified, superseded and supplemented as to this date as hereinafter described.

Please make note of the following clarifications:

1. Q. See attached updated drawing sheets 12, 13 and 15 for the wall design, as well as sheets 89 & 90 for the Stormwater Management Plan.

The gravity block walls shown on sheets 12 & 13 have been designed as Redi-rock walls. The attached drawings are updated for the design, and include section details at the tallest point. If a different wall manufacturer will be used, the contractor shall submit shop drawings with engineering verification for review and acceptance.

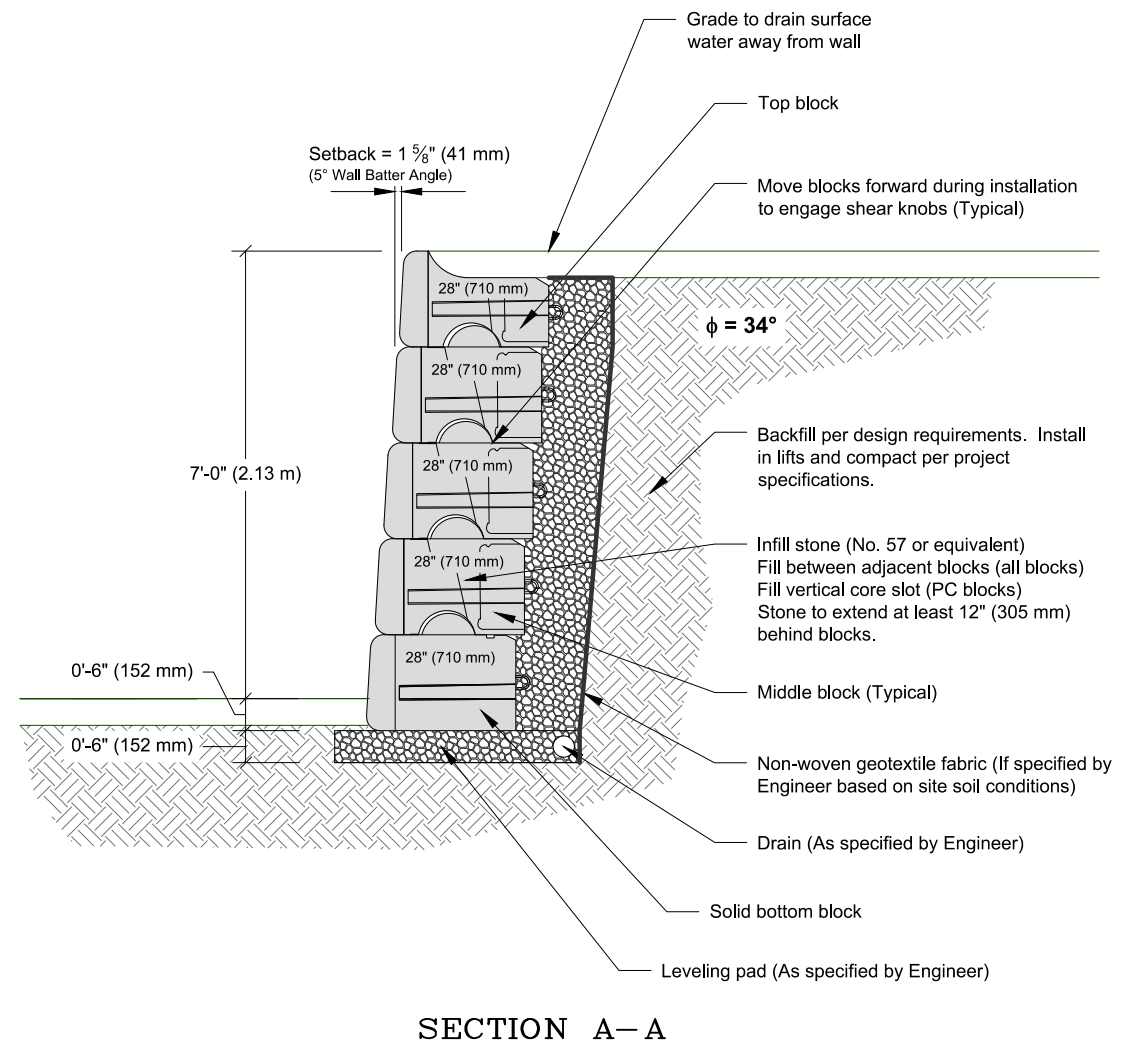
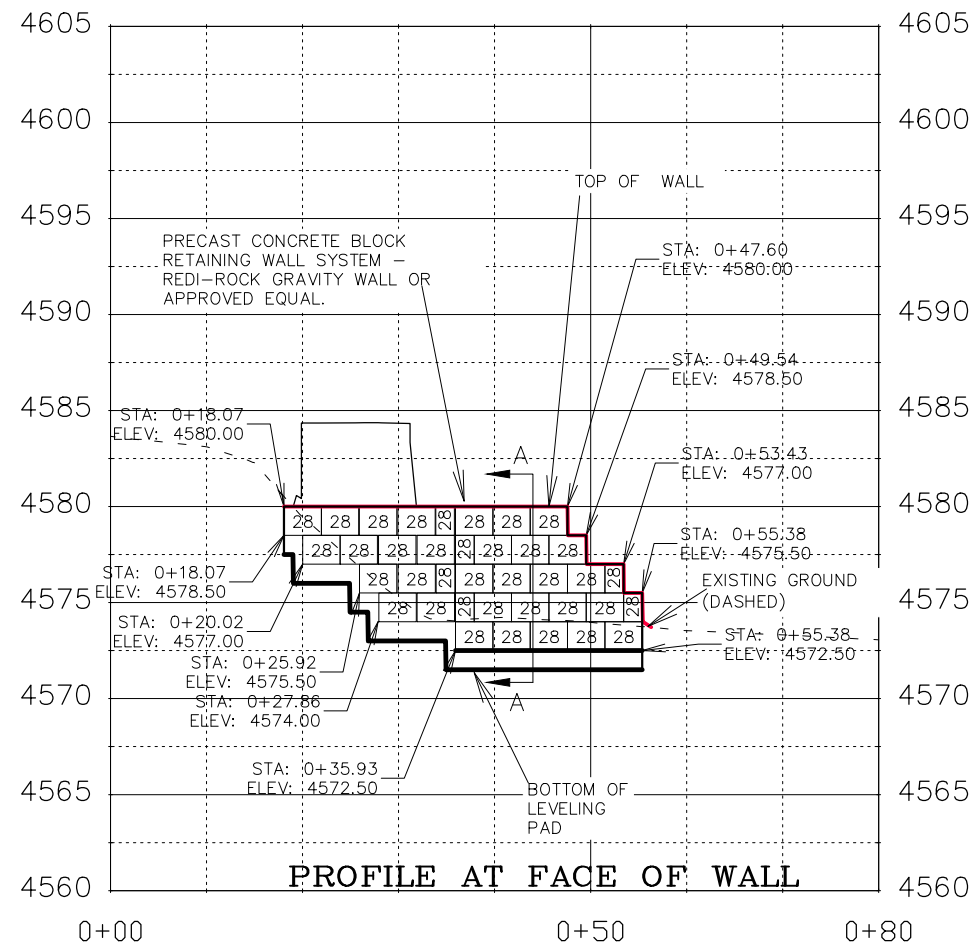
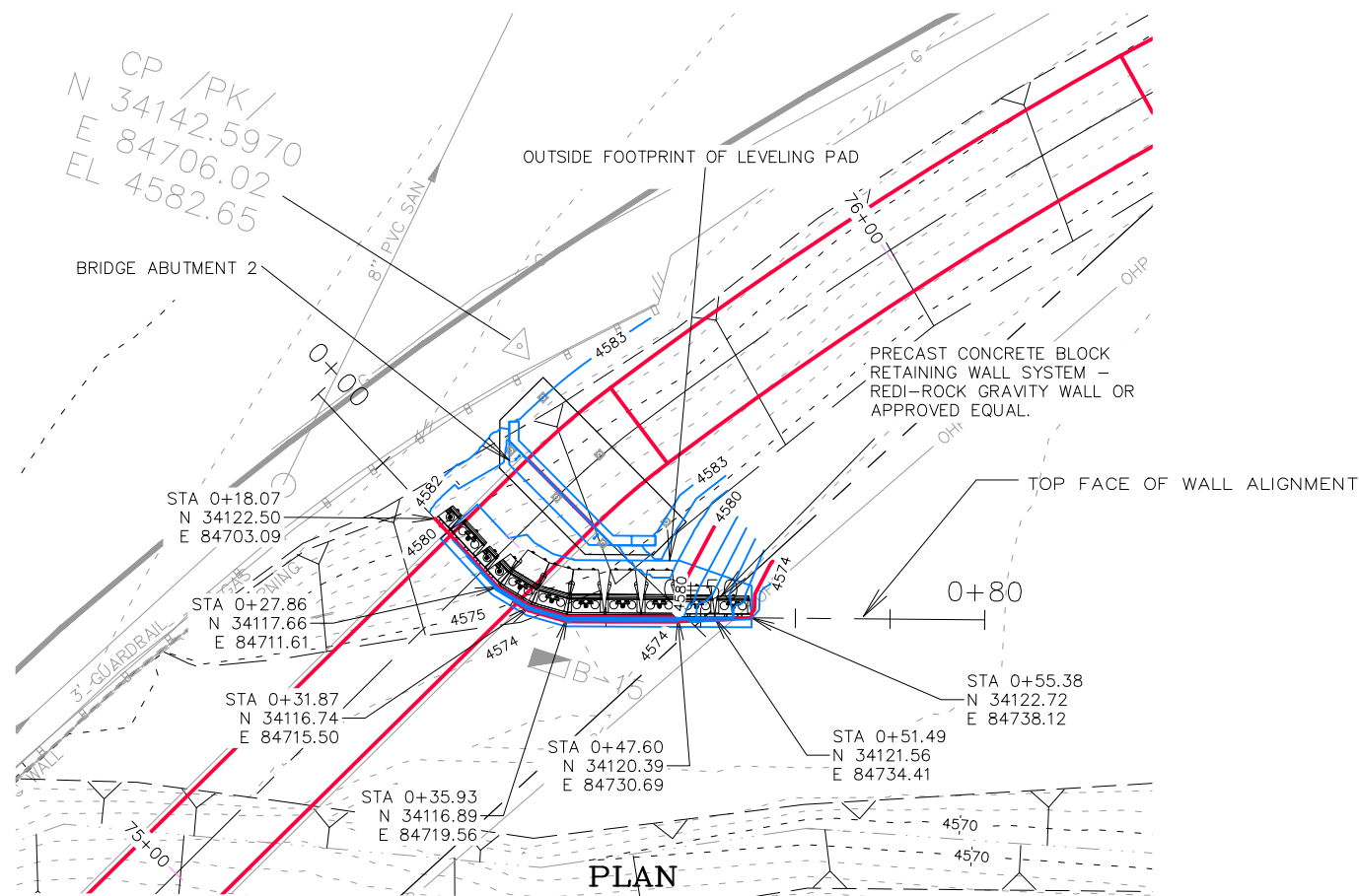
The original solicitation for the project noted above is amended as noted.

All other conditions of subject remain the same.

Respectfully,

A handwritten signature in black ink, appearing to read "Duane Hoff Jr.", written over a horizontal line.

Duane Hoff Jr., Senior Buyer  
City of Grand Junction, Colorado



REVISION	DESCRIPTION	DATE
REVISION Δ	WALL CLARIFICATION	3/26/19
REVISION Δ		
REVISION Δ		
REVISION Δ		

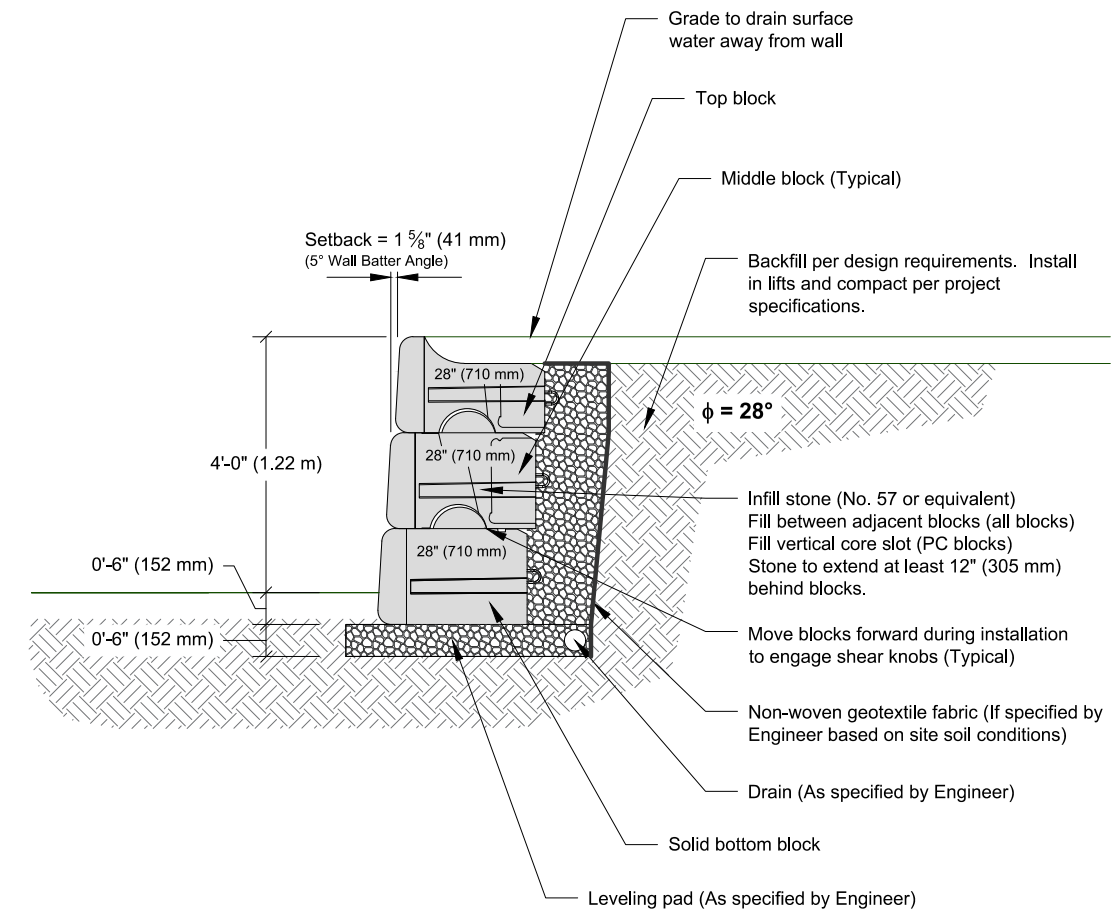
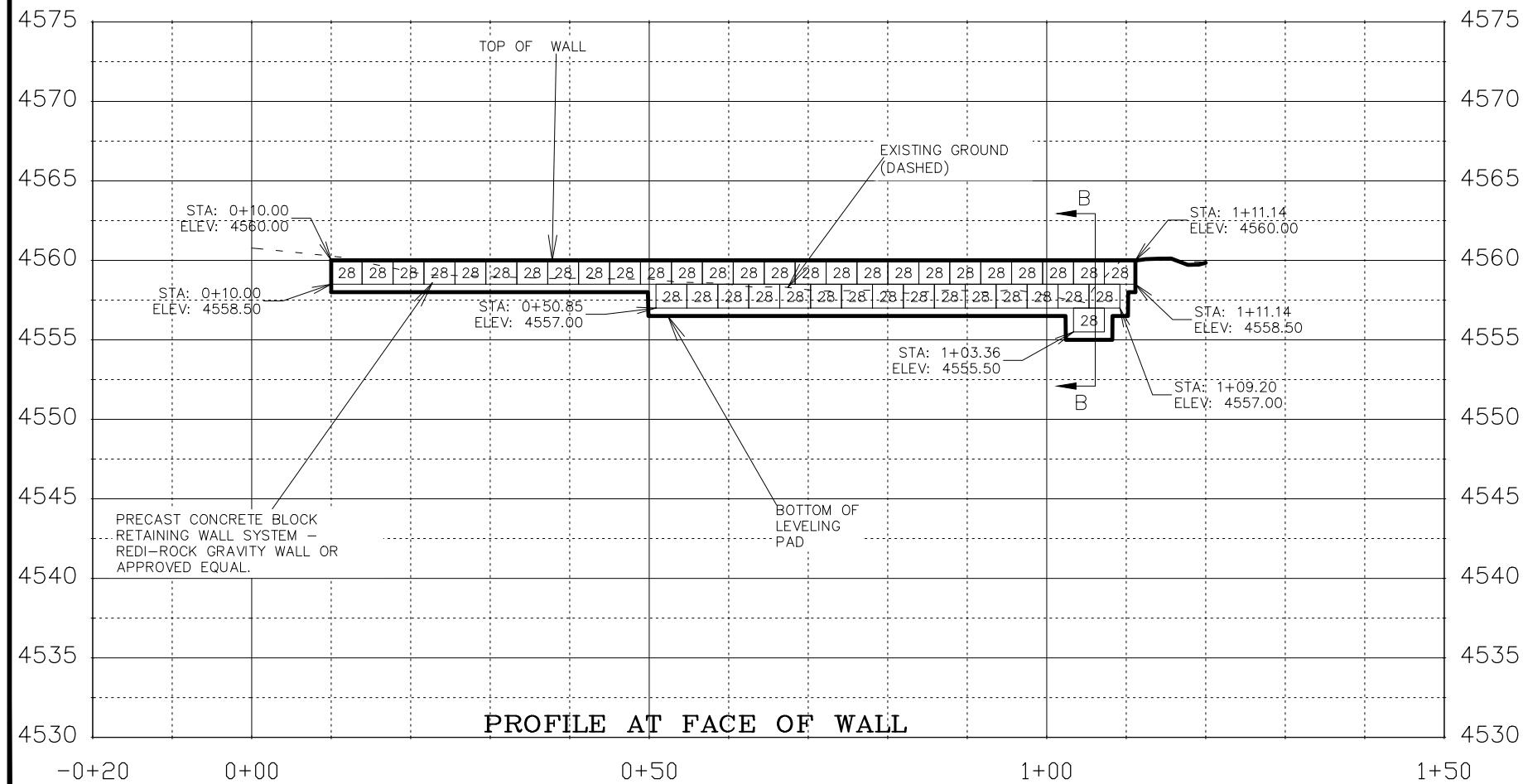
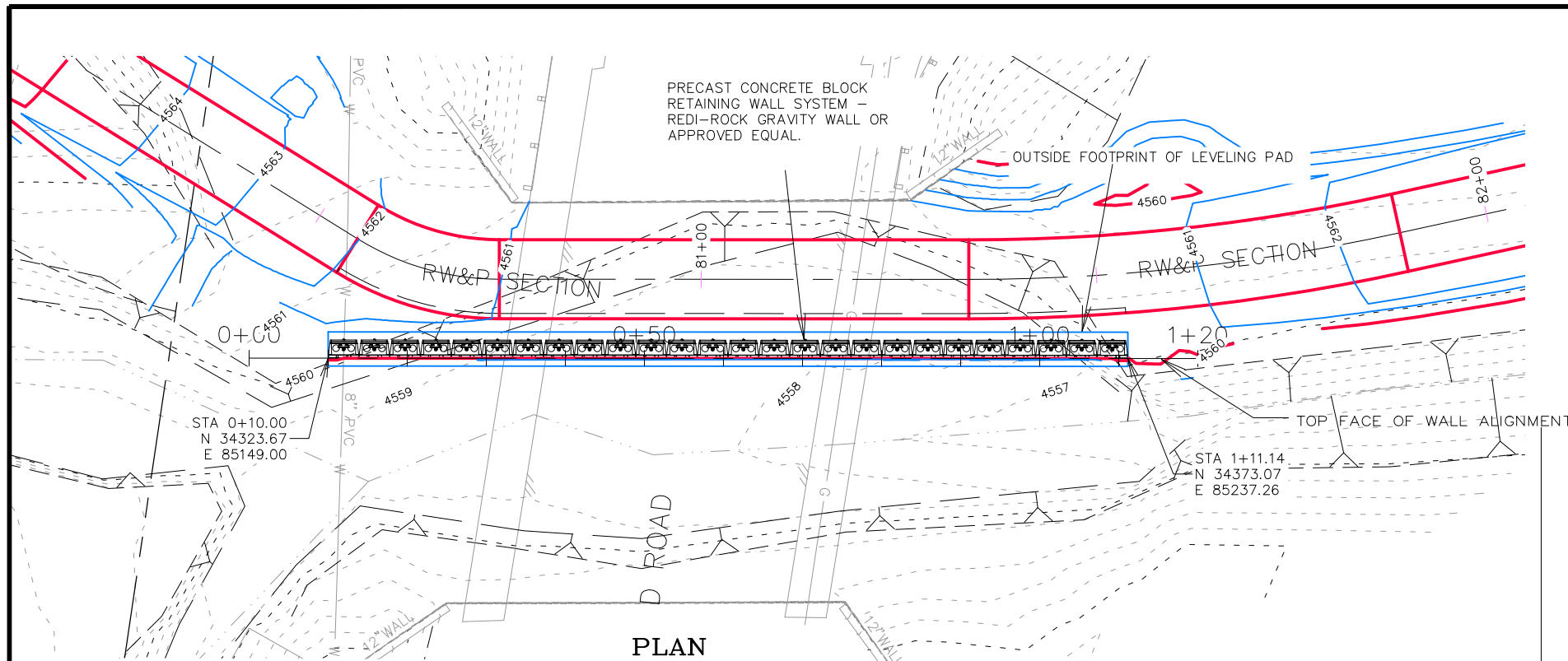
DRAWN BY	JCS	DATE	2019
DESIGNED BY	JCS/KA	DATE	2019
CHECKED BY	KA	DATE	2019
APPROVED BY	TCP	DATE	2019

SCALES:
PLAN & PROFILE
0 5 10 20
HORIZONTAL
0 2.5 5 10
VERTICAL



PUBLIC WORKS  
ENGINEERING DIVISION

MONUMENT ROAD BICYCLE PATH  
WALL PLAN AND PROFILE

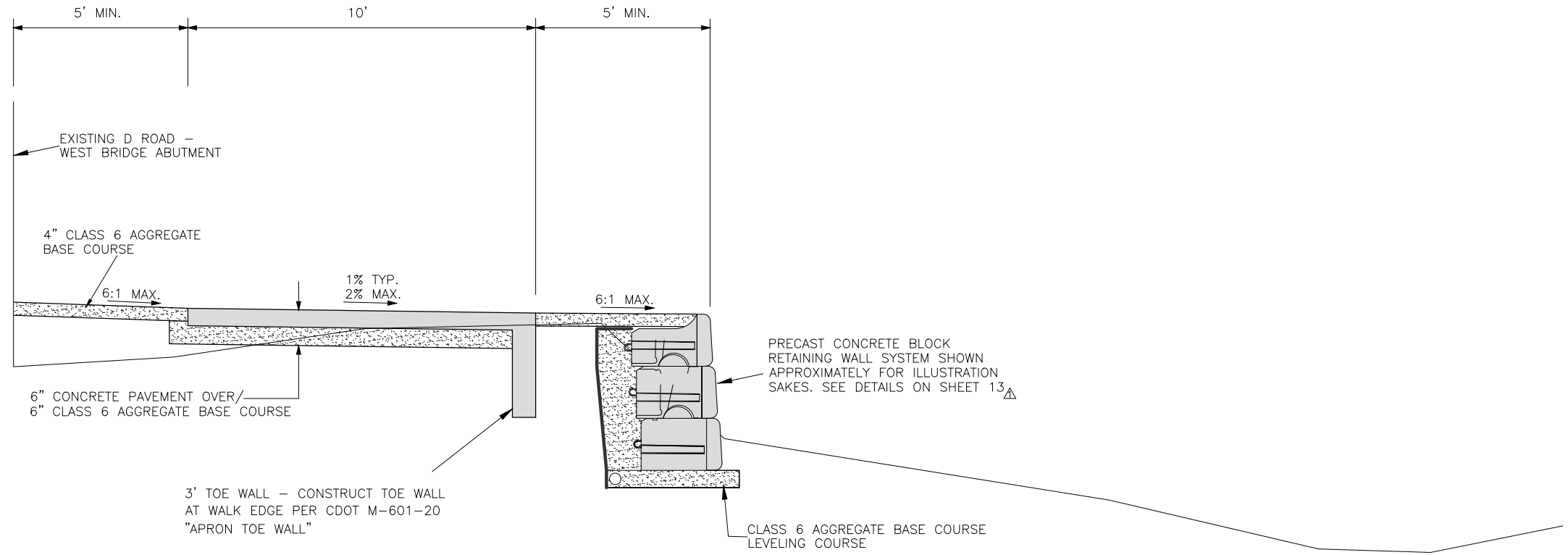


REVISION	DESCRIPTION	DATE	DRAWN BY	DATE	SCALES:
REVISION 1	WALL CLARIFICATION	3/26/19	JCS	2019	PLAN & PROFILE
REVISION 2			JCS/KA	2019	HORIZONTAL 1" = 20'
REVISION 3			KA	2019	VERTICAL 1" = 5'
REVISION 4			TCP	2019	

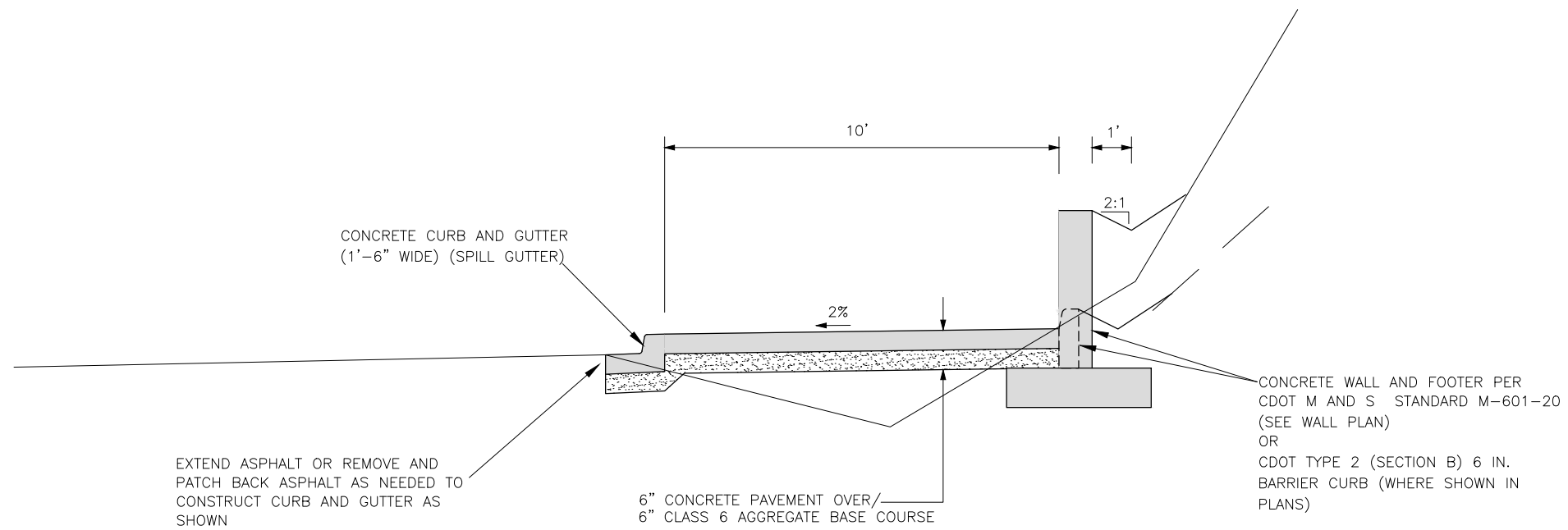


PUBLIC WORKS  
ENGINEERING DIVISION

MONUMENT ROAD BICYCLE PATH  
WALL PLAN AND PROFILE



**TYPICAL CROSS SECTION  
AT D ROAD CROSSING**



**TYPICAL CROSS SECTION  
ATTACHED TO ROADWAY**

REVISION	DESCRIPTION	DATE
REVISION $\Delta$	WALL CLARIFICATION	3/26/19
REVISION $\Delta$		
REVISION $\Delta$		

DRAWN BY	JCS	DATE	2019
DESIGNED BY	JCS	DATE	2019
CHECKED BY	TCP	DATE	2019
APPROVED BY	TCP	DATE	2019

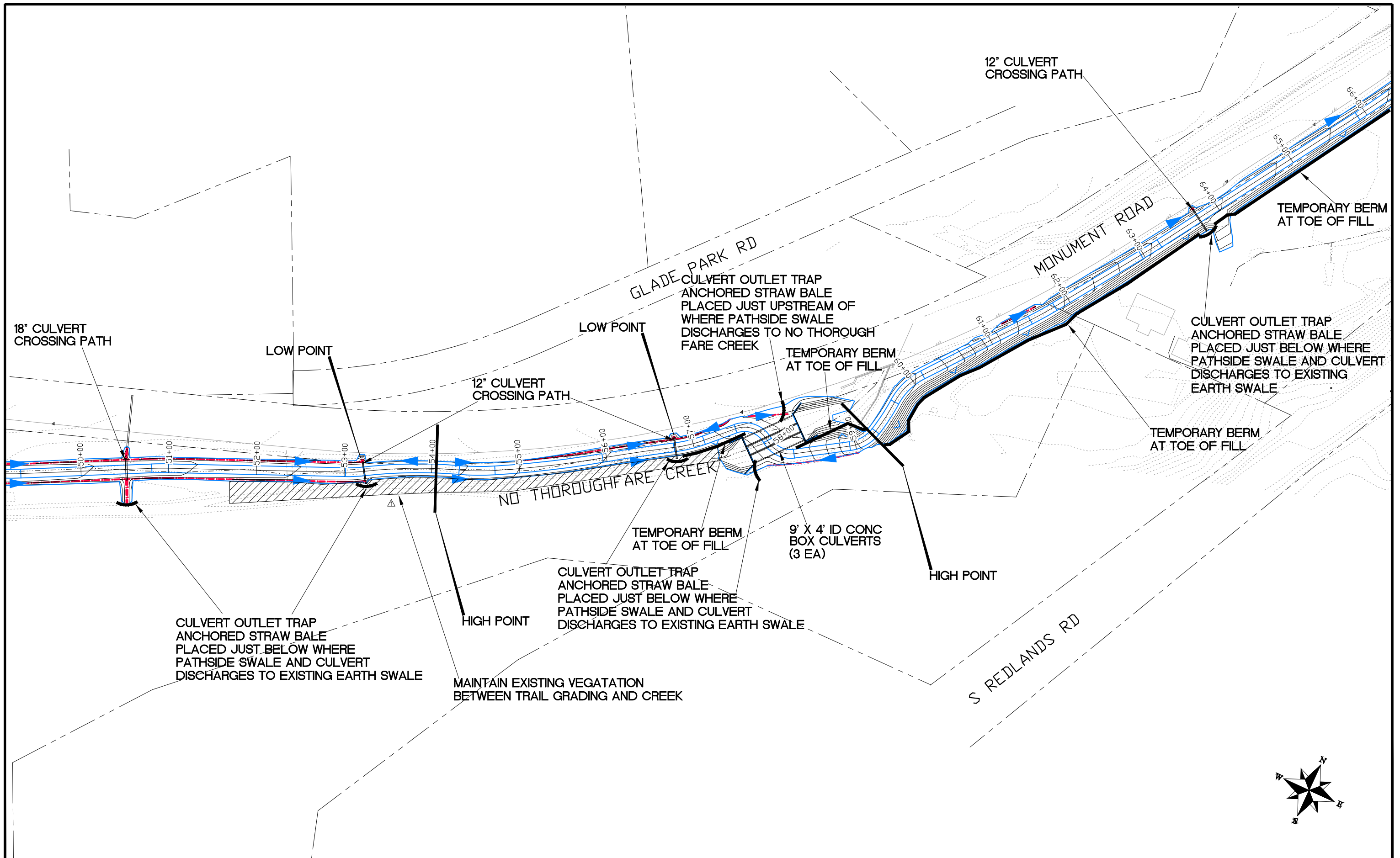
SCALES:	
PLAN & PROFILE	
HORIZONTAL	1" = 4'
VERTICAL	1" = 2'



**PUBLIC WORKS  
ENGINEERING DIVISION**

**PATH TYPICAL CROSS SECTIONS**

N:\Landproj\2018 Monument Road Trail\dwg\00 PUBLICATION DRAWINGS\SWMP.dwg, Layout 4, 3/26/2019 10:46:32 AM



REVISION	DESCRIPTION	DATE
REVISION $\Delta$	MAINTAIN EXISTING VEGETATION BETWEEN TRAIL GRADING AND CREEK	3/26/19
REVISION $\Delta$		
REVISION $\Delta$		

DRAWN BY	JCS	DATE	2019
DESIGNED BY	JCS	DATE	2019
CHECKED BY	KA	DATE	2019
APPROVED BY	TCP	DATE	2019

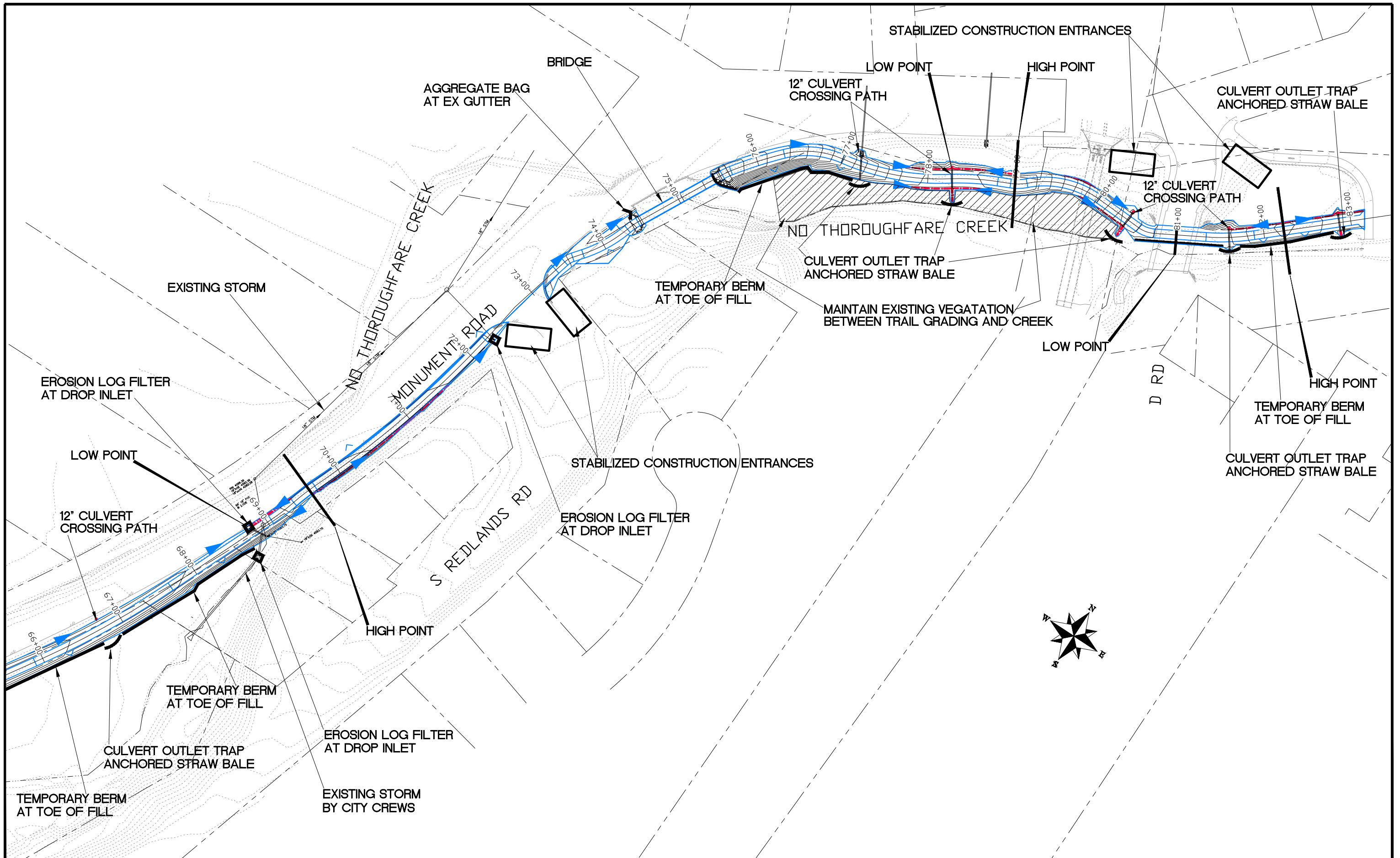
SCALES:	
PLAN & PROFILE	
0 25 50 100	HORIZONTAL
0 NA NA	VERTICAL



PUBLIC WORKS  
ENGINEERING DIVISION

MONUMENT ROAD BICYCLE PATH  
STORM WATER MANAGEMENT PLAN

N:\Landproj\2018 Monument Road Trail\dwg\00 PUBLICATION DRAWINGS\SWMP.dwg, Layout 5, 3/26/2019 10:46:39 AM



REVISION	DESCRIPTION	DATE
REVISION $\Delta$	MAINTAIN EXISTING VEGETATION BETWEEN TRAIL GRADING AND CREEK	3/26/19
REVISION $\Delta$		
REVISION $\Delta$		

DRAWN BY	JCS	DATE	2019
DESIGNED BY	JCS	DATE	2019
CHECKED BY	KA	DATE	2019
APPROVED BY	TCP	DATE	2019

SCALES:	
0	100
0	NA
0	NA



PUBLIC WORKS  
ENGINEERING DIVISION

MONUMENT ROAD BICYCLE PATH  
STORM WATER MANAGEMENT PLAN