

ORDINANCE NO. 2624

AN ORDINANCE ANNEXING TERRITORY TO THE CITY OF GRAND JUNCTION, COLORADO GREEN MEADOWS ANNEXATION - APPROXIMATELY 30.0 ACRES LOCATED AT G-1/2 ROAD AND 7TH STREET

WHEREAS, on the 21st day of October, 1992, the City Council of the City of Grand Junction considered a petition for the annexation of the following described territory to the City of Grand Junction; and

WHEREAS, a hearing on the petition was duly held after proper notice on the 2nd day of December, 1992; and

WHEREAS, the City Council determined that said territory was eligible for annexation and that no election was necessary to determine whether such territory should be annexed;

NOW, THEREFORE, BE IT ORDAINED BY THE CITY COUNCIL OF THE CITY OF GRAND JUNCTION, COLORADO:

That the property situate in Mesa County, Colorado, and described to wit:

GREEN MEADOWS ANNEXATION

A TRACT OF LAND LYING IN THE NW1/4 SE1/4 OF SECTION 35, TOWNSHIP 1 NORTH, RANGE 1 WEST OF THE UTE MERIDIAN, MESA COUNTY, COLORADO, BEING MORE PARTICULARLY DESCRIBED AS FOLLOWS:

BEGINNING AT A POINT WHICH BEARS EAST A DISTANCE OF 30.0 FEET AND SOUTH A DISTANCE OF 25.0 FEET FROM THE CENTER QUARTER CORNER OF SAID SECTION 35; THENCE EAST A DISTANCE OF 627.90 FEET; THENCE NORTH A DISTANCE OF 25.0 FEET; THENCE EAST A DISTANCE OF 658.75 FEET; THENCE S 00 DEG. 06 MIN. E ALONG THE EAST LINE OF GREEN MEADOWS SUBDIVISION, AS RECORDED IN PLAT BOOK 11 AT PAGE 315 IN THE OFFICE OF THE MESA COUNTY CLERK AND RECORDER, A DISTANCE OF 635.14 FEET; THENCE SOUTH A DISTANCE OF 691.2 FEET TO THE NORTHEAST CORNER OF GALAXY SUBDIVISION AS RECORDED IN PLAT BOOK 9 AT PAGE 119 IN THE OFFICE OF THE MESA COUNTY CLERK AND RECORDER; THENCE WEST A DISTANCE OF 636.44 FEET TO THE EAST RIGHT-OF-WAY LINE FOR FLOWER STREET; THENCE NORTH ALONG THE EAST RIGHT-OF-WAY LINE FOR FLOWER STREET A DISTANCE OF 691.2 FEET TO THE SOUTH LINE OF GREEN MEADOWS SUBDIVISION; THENCE WEST A DISTANCE OF 652.9 FEET; THENCE N 00 DEG. 01 MIN. W A DISTANCE OF 610.14 FEET TO THE POINT OF BEGINNING.

be and is hereby annexed to the City of Grand Junction, Colorado.

PASSED and ADOPTED this 16th day of December, 1992.

Reford Theobald

---

President of the Council

Attest:

Neva B. Lockhart, CMC

\_\_\_\_\_  
City Clerk

I HEREBY CERTIFY that the foregoing ordinance, being Ordinance No. 2624, was introduced, read, and ordered published by the City Council of the City of Grand Junction, Colorado, at a regular meeting of said body held on the 2nd day of December, 1992, and that the same was published in The Daily Sentinel, a newspaper published and in general circulation in said City, at least ten days before its final passage.

IN WITNESS WHEREOF, I have hereunto set my hand and affixed the official seal of said City this 17th day of December, 1992.

Neva B. Lockhart

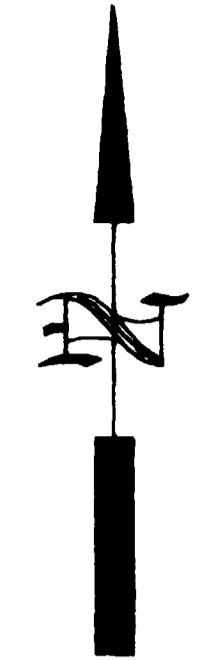
\_\_\_\_\_  
Neva B. Lockhart, CMC  
City Clerk

Published: December 4, 1992

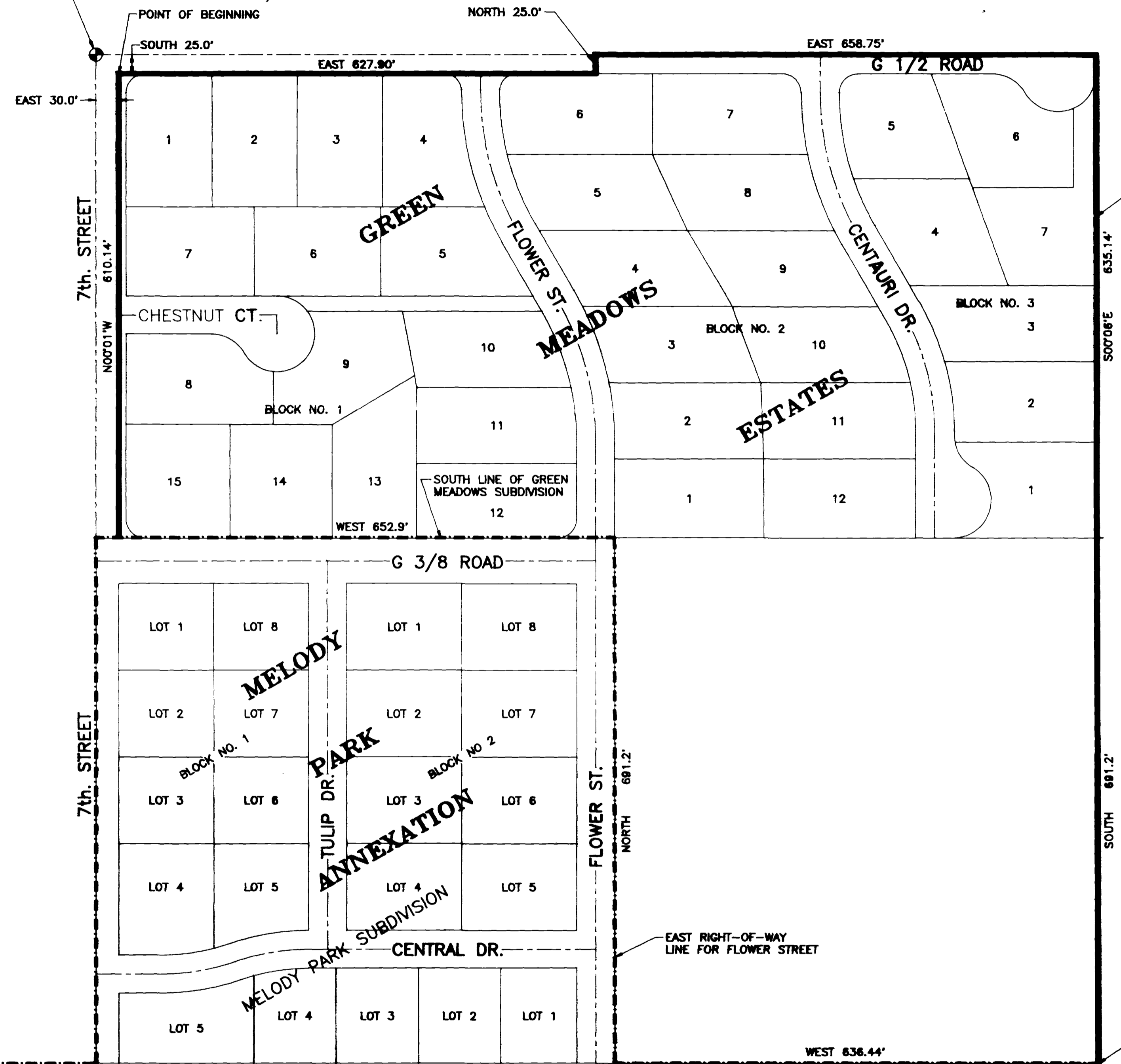
Published: December 22, 1992

Effective: January 21, 1993

# GREEN MEADOWS ANNEXATION



CENTER QUARTER CORNER OF SECTION 35, TOWNSHIP 1 NORTH, RANGE 1 WEST OF THE UTE MERIDIAN, MESA COUNTY, COLORADO.



## DESCRIPTION

A TRACT OF LAND LYING IN THE NW1/4 SE1/4 OF SECTION 35, TOWNSHIP 1 NORTH, RANGE 1 WEST OF THE UTE MERIDIAN, MESA COUNTY, COLORADO, BEING MORE PARTICULARLY DESCRIBED AS FOLLOWS:

BEGINNING AT A POINT WHICH BEARS EAST A DISTANCE OF 30.0 FEET AND SOUTH A DISTANCE OF 25.0 FEET FROM THE CENTER QUARTER CORNER OF SAID SECTION 35; THENCE EAST A DISTANCE OF 627.90 FEET; THENCE NORTH A DISTANCE OF 25.0 FEET; THENCE EAST A DISTANCE OF 658.75 FEET; THENCE S00°06'E ALONG THE EAST LINE OF GREEN MEADOWS SUBDIVISION, AS RECORDED IN PLAT BOOK 11 AT PAGE 315 IN THE OFFICE OF THE MESA COUNTY CLERK AND RECORDER, A DISTANCE OF 635.14 FEET; THENCE SOUTH A DISTANCE OF 691.2 FEET TO THE NORTHEAST CORNER OF GALAXY SUBDIVISION AS RECORDED IN PLAT BOOK 9 AT PAGE 119 IN THE OFFICE OF THE MESA COUNTY CLERK AND RECORDER; THENCE WEST A DISTANCE OF 636.44 FEET TO THE EAST RIGHT-OF-WAY LINE FOR FLOWER STREET; THENCE NORTH ALONG THE EAST RIGHT-OF-WAY LINE FOR FLOWER STREET A DISTANCE OF 691.2 FEET TO THE SOUTH LINE OF GREEN MEADOWS SUBDIVISION; THENCE WEST A DISTANCE OF 652.9 FEET; THENCE N00°01'W A DISTANCE OF 610.14 FEET TO THE POINT OF BEGINNING.

## LEGEND

- Annexation Boundary
- - - - - Existing City Limits

## AREA OF ANNEXATION

Annexation Perimeter	5,228.67 FT.
Contiguous Perimeter	1,980.54 FT.
Area in Square Feet	1,241,096.32
Area in Acres	28.49

## ORDINANCE NUMBER

2624

## EFFECTIVE DATE

JANUARY 21, 1993

The Description(s) contained herein have been derived from subdivision plats and deed descriptions as they appear in the office of the Mesa County Clerk and Recorder. This plat does not constitute a legal survey, and is not intended to be used as a means for establishing or verifying property boundary lines.

*James L. Shanks*  
 JAMES L. SHANKS DIRECTOR OF PUBLIC WORKS & UTILITIES

SUNSET  
TERRACE REPLAT  
ANNEXATION

GALAXY  
ANNEXATION

GALAXY  
ANNEXATION

DESCRIPTION	DATE	DRAWN BY	C.A.K.	DATE	10/12/92	SCALE	
REVISION		CHECKED BY	T.A.B.	DATE	10/12/92	PLAN	PROFILE
REVISION		APPROVED BY	J.L.S.	DATE	10/12/92	HORIZ. 1"=100'	HORIZ.
REVISION		FIELD BOOK NO.		PAGE		VERT.	

DEPARTMENT OF PUBLIC WORKS AND UTILITIES  
 ENGINEERING DIVISION  
 CITY OF GRAND JUNCTION, COLORADO

GREEN MEADOWS ANNEXATION

SHEET NO.	1
OF	1
FILE NO.	MELOPARK.DWG