

BUTTOLPH SUBDIVISION

DEDICATION

KNOW ALL MEN BY THESE PRESENTS:

That the undersigned William H. Buttolph and Aerial A. Buttolph are the owners of that real property situated in the City of Grand Junction, County of Mesa, State of Colorado and lying in the N 1/2 NW 1/4 SW 1/4 SE 1/4, Section 7, T 1 S R 1 E of the Ute Meridian, as shown on the accompanying plat thereof said tract being more specifically described by metes and bounds as follows:

Beginning at a point which bears S 89°52' E 211.5 feet and S 00°07' E 30.0 feet from the Northwest Corner of the NW 1/4 SW 1/4 SE 1/4, Section 7, T 1 S R 1 E Ute Meridian, said Point Of Beginning also being the Northeast Corner of Lot 1, Anderson Subdivision, thence S 00°07' E 134.88 feet, thence N 89°52' W 71.5 feet to a point which bears 140.0 feet East of the West Line of said NW 1/4 SW 1/4 SE 1/4, thence S 00°07' E parallel to said West Line 164.7 feet to the South Line of the N 1/2 NW 1/4 SW 1/4 SE 1/4 said Section 7, thence S 89°57' E 519.8 feet to the Southeast Corner of said N 1/2 NW 1/4 SW 1/4 SE 1/4, thence North 298.82 feet, thence N 89°52' W 448.85 feet to the Point Of Beginning.

That the said owners have caused the said real property to be laid out and surveyed as Buttolph Subdivision, a subdivision of a part of the City of Grand Junction, County of Mesa and State of Colorado.

That said owners do hereby dedicate and set apart all of the streets and roads as shown on the accompanying plat to the use of the public forever and hereby dedicate those portions of said real property which are labeled as utility easements on the accompanying plat as easements for the installation and maintenance of such utilities as telephone and electric lines, poles and cables; storm and sanitary sewer mains, water mains, gas pipe lines, and those portions of said real property which are labeled as irrigation easements on the accompanying plat as easements for the installation and maintenance of irrigation ditches flumes and conduits;

IN WITNESS WHEREOF, said owners, William H. Buttolph and Aerial A. Buttolph, have caused their names to be hereunto subscribed this 14th day of JANUARY A.D. 1972.

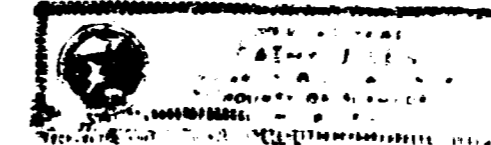
William H. Buttolph
William H. Buttolph

Aerial A. Buttolph
Aerial A. Buttolph

STATE OF CALIFORNIA
COUNTY OF ALAMEDA ss

The foregoing instrument was acknowledged before me this 14th day of JANUARY A.D. 1972 by William H. Buttolph and Aerial A. Buttolph.

My Commission expires AUGUST 31, 1975
Witness my hand and official seal



Cathy Julia
Notary Public

CITY APPROVAL

This plat of Buttolph Subdivision, a subdivision of the City of Grand Junction, County of Mesa and State of Colorado was approved and accepted on this 2nd day of FEBRUARY 1972.

CITY OF GRAND JUNCTION

By *Stanley K. Anderson*
President of Council

Donald H. Wainwright
City Manager

Donald H. Wainwright
Director of Development

Elizabeth J. Russell
Chairman, Grand Jct. City Planning Comm.

Joe Wiman
Grand Jct. City Engineer

W. Balanda
Public Service Co. of Colo. - Gas Dept.

Thomas B. Ingwersen
Public Service Co. of Colo. - Electrical Dept.

W. Balanda
Fruitvale Sanitation District

Dorothy R. Wells
Mountain States Tele. & Tele. Co.

CLERK AND RECORDER'S CERTIFICATE

STATE OF COLORADO
COUNTY OF MESA ss

I hereby certify that this instrument was filed in my office at _____ o'clock _____ M., _____ A.D. 1972, and is duly recorded in Plat Book No. 11, Page 6.

Clerk and Recorder

By _____
Deputy

SURVEYOR'S CERTIFICATE

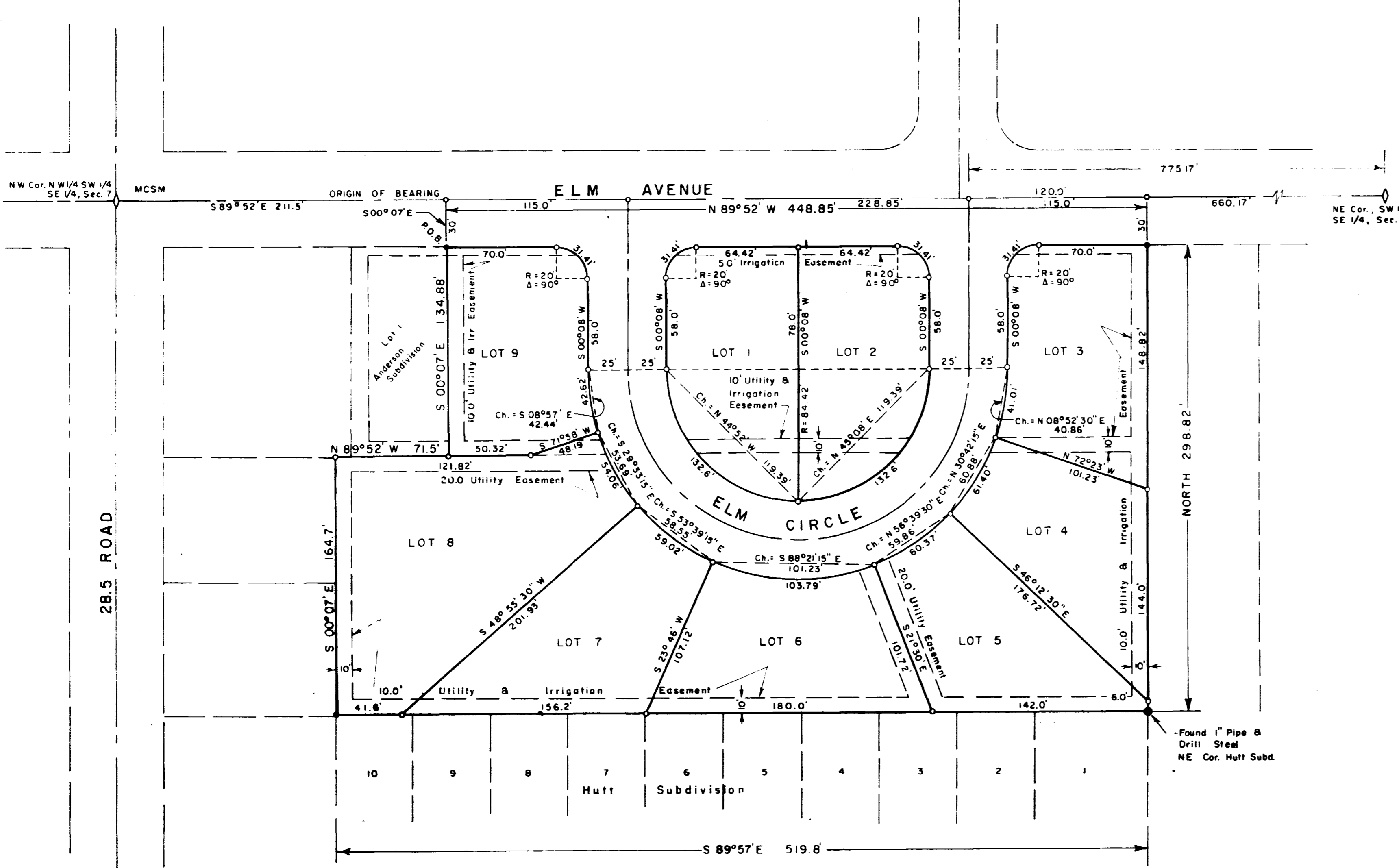
I, William F. Quinn do hereby certify that the accompanying plat of Buttolph Subdivision, a subdivision of the City of Grand Junction, County of Mesa, State of Colorado, has been prepared under my direction and accurately represents a field survey of same.

William F. Quinn
Registered Land Surveyor

Approved for content and form only and not to the accuracy of surveys, calculations or drafting. Pursuant to C.R.S. 1963, 136-2-2 as amended.

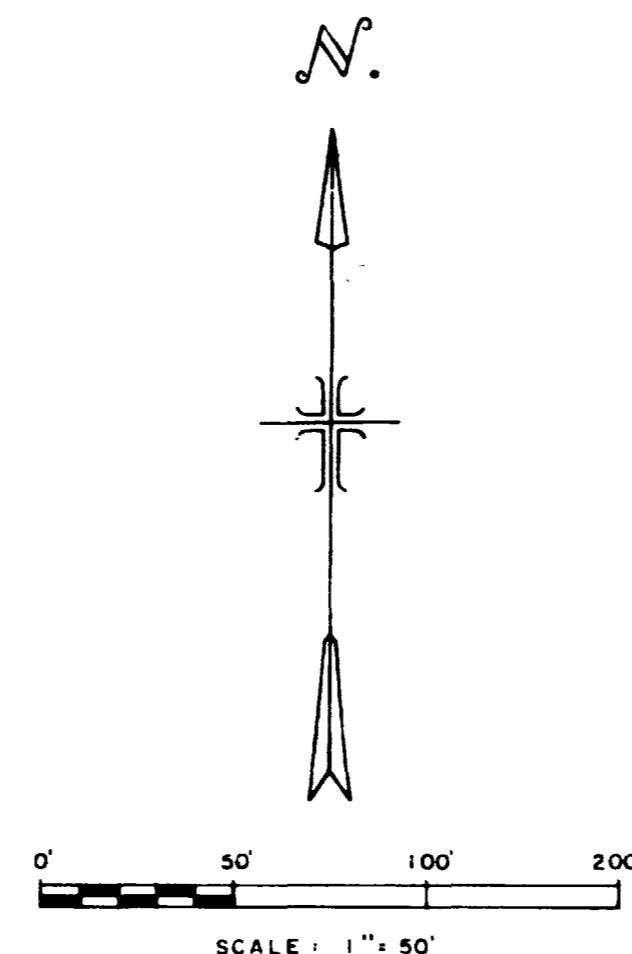
By *Roger E. Head* Date 2/22/72
Mesa County Surveyor

Recorded in Book 11 Page 6



LEGEND

- Mesa County Survey Monument
- # 5 rebar
- # 5 rebar set in concrete



WESTERN ENGINEERS, INC.
PLAT OF
BUTTOLPH SUBDIVISION
CITY OF GRAND JUNCTION
MESA COUNTY, COLORADO
SURVEYED 2/22/72 DRAWN W.F.Q. TRACED W.F.Q.
GRAND JUNCTION, COLO. DWG. 1-589-2 1/10/72