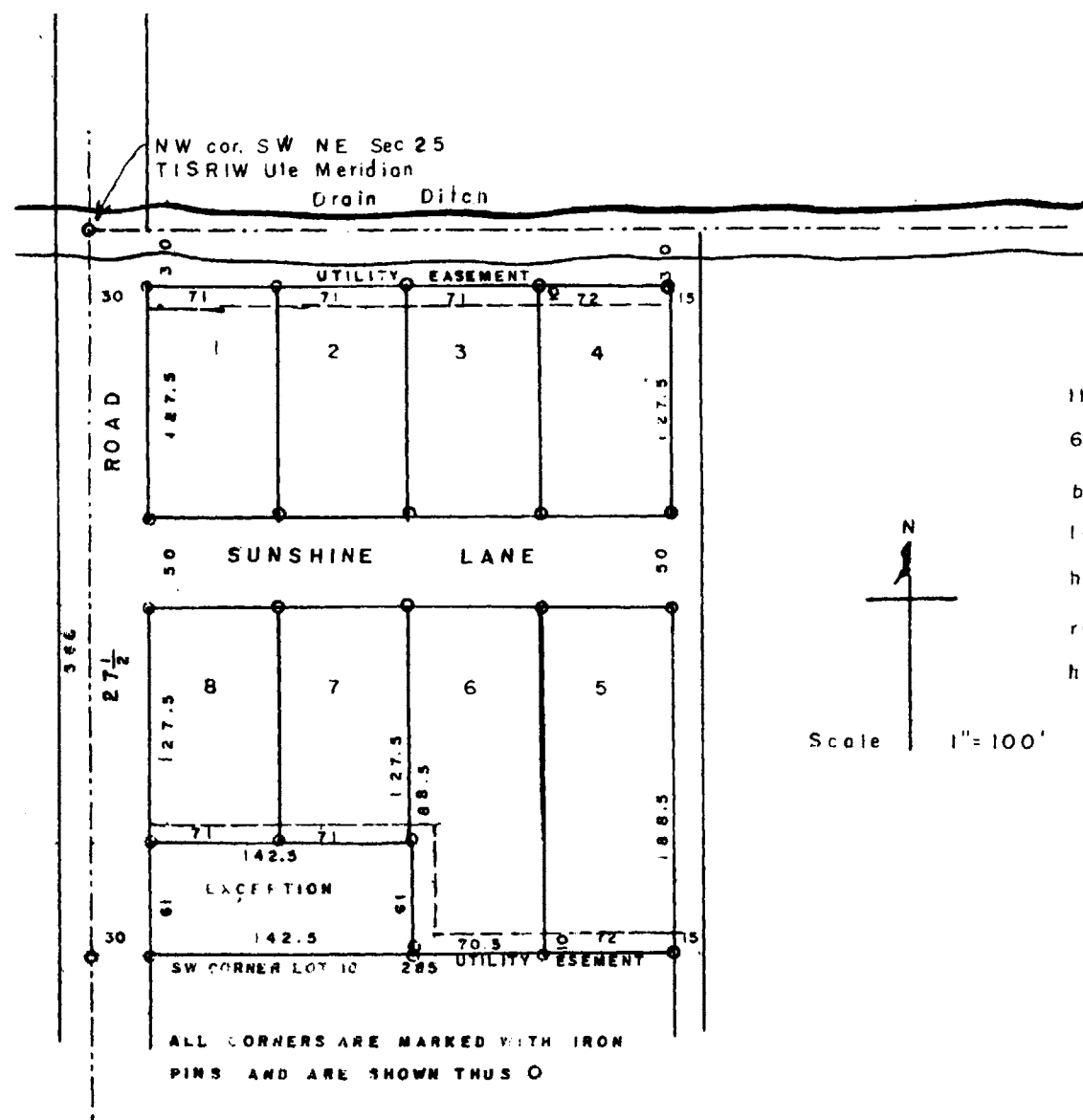


LUX SUBDIVISION



KNOW ALL MEN BY THESE PRESENT: That Guy N. Sickler and Bertha V. Sickler being the owners of the following described land; lots 10, 11 and 12 Cox Subdivision as filed in book number 6 page 16 In the office of the County Clerk and Recorder Mesa County, Colorado, except beginning at the SE corner of lot 10 North 61 feet, thence East 142.5 feet, thence South 61 feet, thence West 142.5 feet to the point of beginning; have caused the same to be surveyed and platted as shown hereon, have named the same the Re-plot of Lots 10, 11 and 12 Cox Subdivision, and do hereby dedicate the roads and easements to the use of the public forever in witness whereof we have hereunto affixed our hands.

*Guy N. Sickler*  
*Bertha V. Sickler*

Approved by the Planning Commission of Mesa County Colorado.

30 Aug 1955  
*Ray Rabin*  
 Chairman

STATE OF COLORADO )  
 County of Mesa ) S S

The foregoing instrument was acknowledged before me by Guy N. Sickler and Bertha V. Sickler on the 19<sup>th</sup> day of August, A.D. 1955. My commission expires July 15, 1957.

*Gene Haggins*  
 Notary Public

Approved by the Board of County Commissioners of Mesa County Colorado.

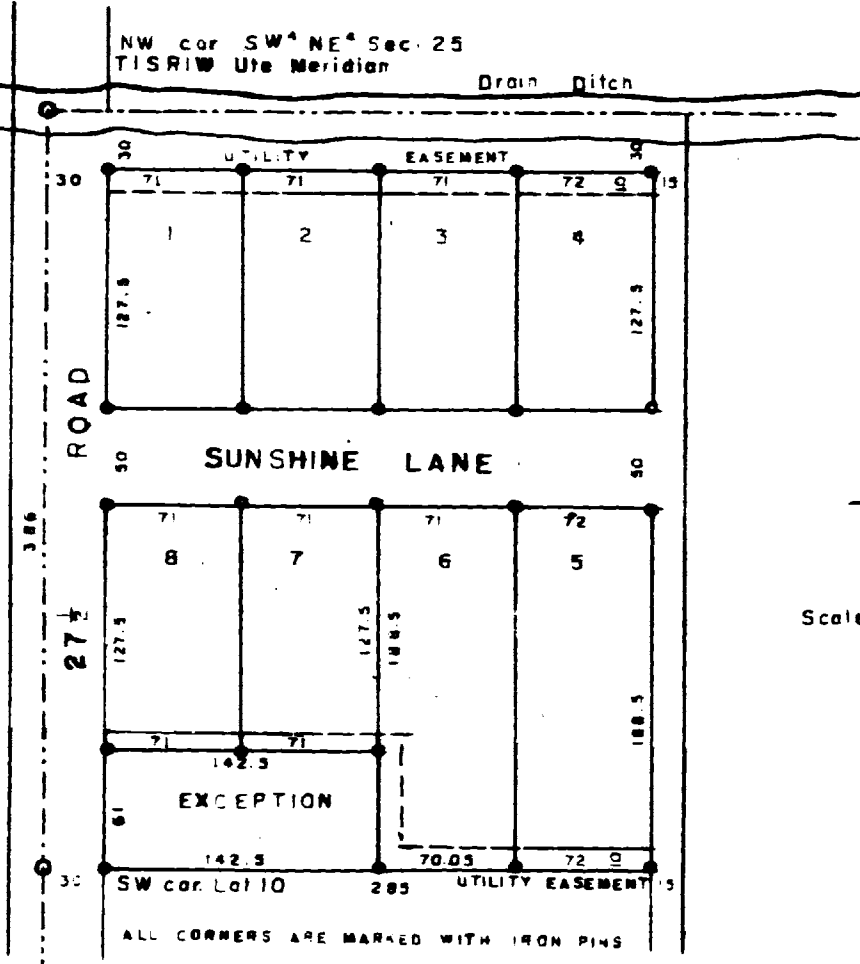
*Henry J. Jupp*  
 Chairman 8/13/55

Attest *James M. Deenertore*  
 County Clerk

I hereby certify that this is a true and correct plot of survey of the above described land and the re-subdivision of the same.

*Ray S. George*  
 County Surveyor R. S.

646 501



KNOW ALL MEN BY THESE PRESENTS: That the undersigned being the owners of the Re-plot of Lots 10, 11 and 12 Cox Subdivision as filed in the office of the Clerk and Recorder in and for the County of Mesa, State of Colorado, and recorded in Plat book number 8 at page 26, have caused this Second Re-plot of Lots 10, 11 and 12 Cox Subdivision except beginning at the SW corner of lot 10, North 61 feet, thence East 142.5 feet, thence South 61 feet, thence West 142.5 feet to the point of beginning, to be prepared, and do hereby dedicate the roads and easements as shown hereon to the use of the public forever. In witness whereof we have hereunto affixed our hands.

Guy N. Sickler  
Bertha V. Sickler

STATE OF COLORADO } SS  
 County of Mesa }

The foregoing instrument was acknowledged before me this 12<sup>th</sup> day of November A.D. 1955 by Guy N. Sickler and Bertha V. Sickler.  
 My commission expires JANUARY 6, 1959

M. J. Finnessey  
 Notary Public.



Approved this \_\_\_\_\_ day of \_\_\_\_\_ A.D. 1955 by the Planning Commission of Mesa County Colorado.

\_\_\_\_\_  
 Chairman.

Approved this \_\_\_\_\_ day of \_\_\_\_\_ A.D. 1955 by the Board of County Commissioners of Mesa County Colorado.

\_\_\_\_\_  
 Chairman.

I hereby certify that this is a true and correct plat of survey of the above described land and of the re-subdivision of the same.

Ray S. Long  
 County Surveyor R.S.

