

COREY SUBDIVISION

DEDICATION

KNOW ALL MEN BY THESE PRESENTS:

That the undersigned, Homer C. Corey and Alwilda G. Corey are the owners of that real property situated in the County of Mesa, State of Colorado, and lying in the SW 1/4 NW 1/4 SW 1/4 Section 8, Township 1 South, Range 1 East of the Ute Meridian as shown on the accompanying plat thereof said tract being more specifically described by metes and bounds as follows.

Beginning at a point which is North 762.0 feet and East 30.0 feet from the Southwest Corner of Section 8, Township 1 South, Range 1 East of the Ute Meridian; thence North 149.9 feet; thence East 135.0 feet; thence South 149.9 feet; thence West 135.0 feet to the point of beginning.

That said owners have caused the said real property to be laid out and surveyed as COREY SUBDIVISION, a subdivision of a part of the County of Mesa;

That said owners do hereby dedicate and set apart all of the streets and roads as shown on the accompanying plat to the use of the public forever and hereby dedicate those portions of said real property which are labeled as utility easements on the accompanying plat as easements for the installation and maintenance of such utilities as telephone and electric lines, poles and cables; storm and sanitary sewer mains; water mains; gas pipe lines; and those portions of said real property which are labeled as irrigation easements on the accompanying plat as easements for the installation and maintenance of irrigation ditches, flumes and conduits;

That all expenses for installation of utilities or ditches referred to above, for grading or landscaping, and for street graveling or improvements shall be financed by the seller or purchaser ---not the County of Mesa.

IN WITNESS WHEREOF, said Homer C. Corey and Alwilda G. Corey have caused their names to be hereunto subscribed this 21st day of July, A. D. 1960.

Homer C. Corey
Homer C. Corey

Alwilda G. Corey
Alwilda G. Corey

STATE OF COLORADO }
COUNTY OF MESA } ss.

The foregoing instrument was acknowledged before me this 21st day of July, A.D. 1960, by Homer C. Corey and Alwilda G. Corey.

My commission expires January 6, 1963

Witness my hand and official seal.

J. M. Kinnessey
Notary Public

CLERK AND RECORDER'S CERTIFICATE

STATE OF COLORADO }
COUNTY OF MESA } ss.

I hereby certify that this instrument was filed in my office at 4:40 o'clock P. M., Aug. 4, 1960 A. D., 1960, and is duly recorded in Plat Book No. 9, Page 112.

Fees \$6.00

Annice M. Hunter
Clerk and Recorder

By _____
Deputy

COUNTY PLANNING COMMISSION CERTIFICATE

Approved this 12th day of July, A. D., 1960.
County Planning Commission of the County of Mesa, Colorado

By E. Linn Gray
Chairman

FRUITVALE DISTRICT PLANNING COMMISSION

Approved this 13th day of JULY, A. D., 1960.
Fruitvale District Planning Commission of the County of Mesa, Colorado.

By P. B. Grant
Chairman

BOARD OF COUNTY COMMISSIONER'S CERTIFICATE

Approved this 29 day of July, A. D., 1960
Board of County Commissioners of the County of Mesa, Colorado

By Henry J. Jupp
Chairman

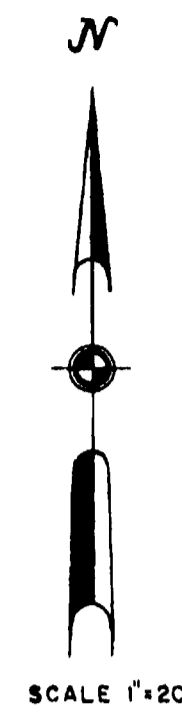
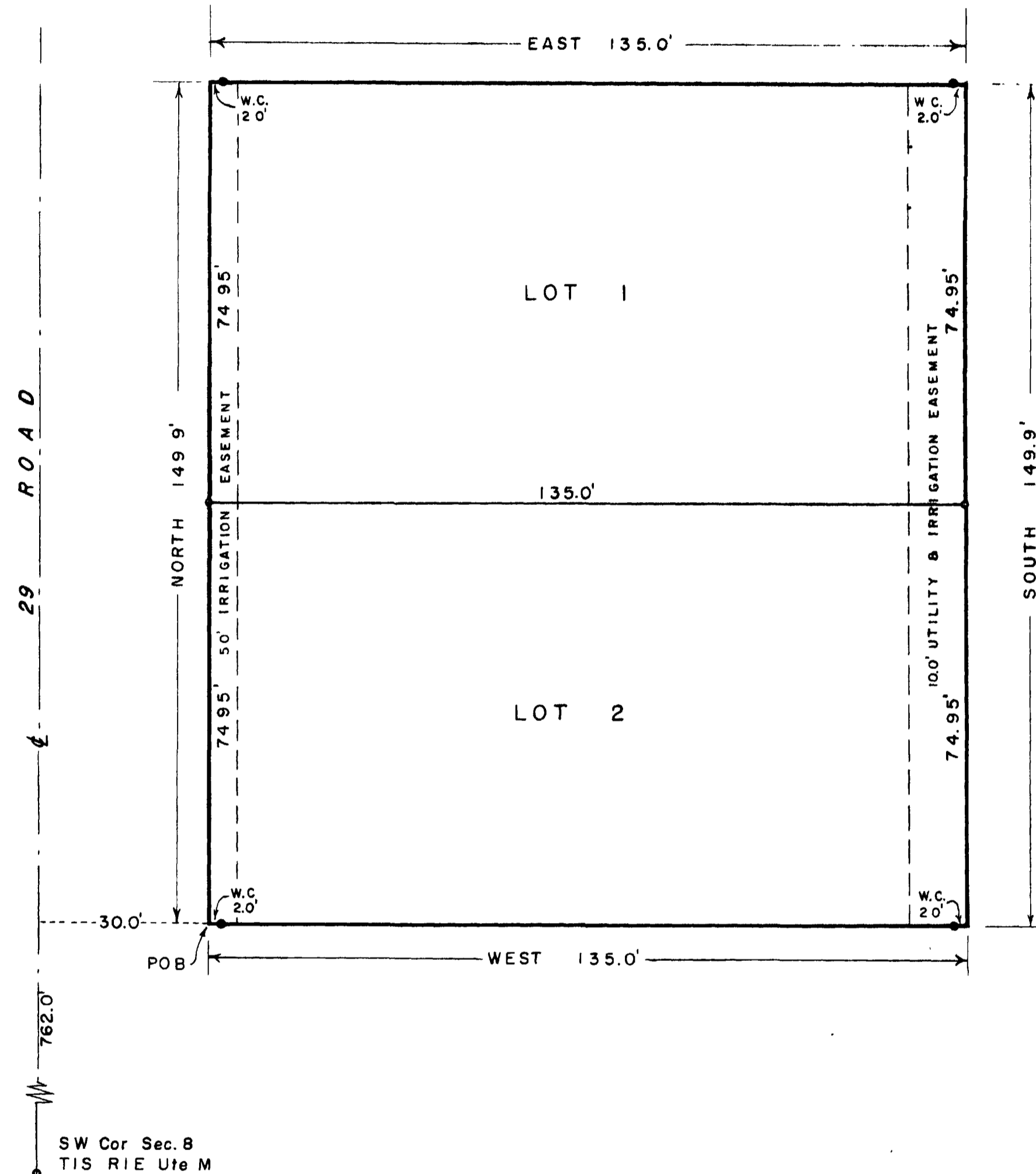
SURVEYOR'S CERTIFICATE

I, Richard J. Mandeville, do hereby certify that the accompanying plat of COREY SUBDIVISION, a subdivision of a part of the County of Mesa, has been prepared under my direction, and accurately represents a field survey of same

Richard J. Mandeville
Registered Engineer & Land Surveyor

WESTERN ENGINEERS
PLAT OF
COREY SUBDIVISION
MESA COUNTY, COLORADO

SURVEYED 7/28 DRAWN 7/28 TRACED
GRAND JUNCTION, COLO. 01016101.tif



LEGEND

- — Permanent Corner
Set in Concrete.
- — Steel Pin
- — W.C. 2.0' Corner witnessed
2.0 feet from true corner