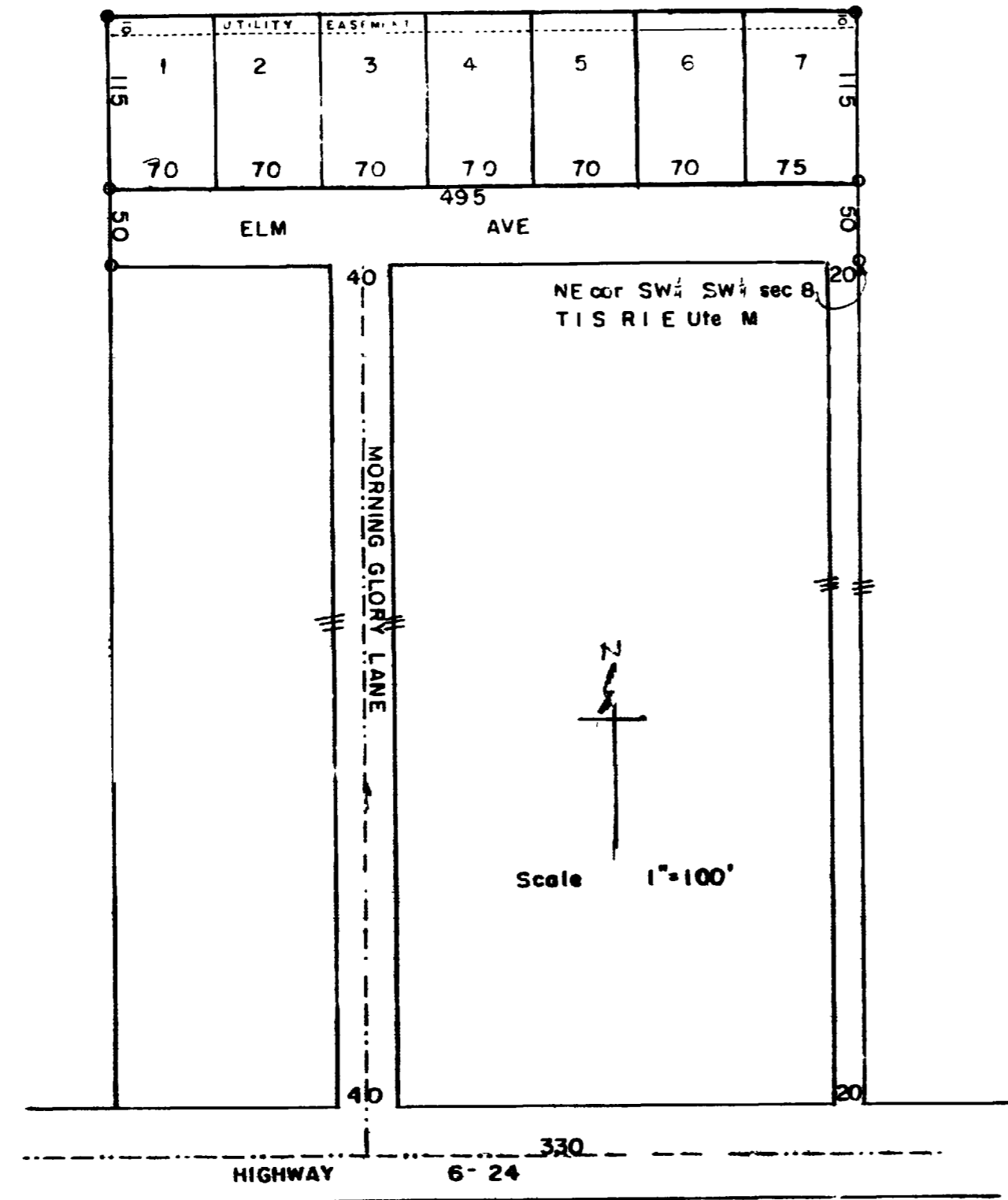


All iron pins shown thus O



KNOW ALL MEN BY THESE PRESENTS That the undersigned, being the owners of the following described land, the South 165 of the East 495 feet of the NW SW section 8 T 1 S R 1 E Ute Meridian, have caused the same to be surveyed and platted as shown hereon, have named said place R. C. Dorn Subdivision, and do hereby dedicate the streets and easements to the use of the public forever. In witness whereof we hereunto affixed our hands.

Richard C. Dorn
Lula C. Dorn

STATE OF COLORADO } SS
 County of Mesa }

The foregoing instrument was acknowledged before me by Richard C. Dorn and Lula C. Dorn on the 17th day of August A.D. 1955
 My commission expires January 6, 1957

L. M. Funness
 Notary Public

I hereby certify that this is a true and correct plat of survey of the above described land and the subdivision of the same

Ray S. George
 County Surveyor, R.S.

Approved by the Mesa County Planning Commission
[Signature]
 Chairman

Approved by the Mesa County Commissioners
Henry J. Jupp
 Chairman

Attest *[Signature]*
 County Clerk

MESA COUNTY COLORADO
 R.C. DORN SUBDIVISION