

PLAT OF THE EPPS SUBDIVISION DEDICATION

Know all men by these presents, greetings; that we, the undersigned, do hereby plat a tract of land comprising the N.E. 1/4 of the S.E. 1/4 of the S.E. 1/4 of Section 7, T1S, R1E of the Ute P.M., Mesa County, Colo., all of this tract is divided into lots as shown. All streets or roads, as shown, are hereby dedicated to the use of the public forever. Witness our hands and seals this 22nd day of May 1946.

State of Colorado }
County of Mesa }

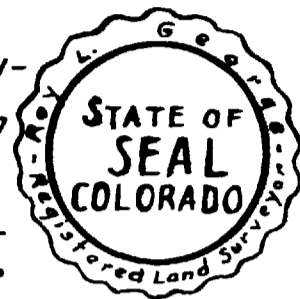
Subscribed and sworn to before me
This 22nd day of May 1946.

By Ivan Ross Epperson Margaret Murphy
And Julia Frost Epperson Notary Public
My commission expires Feb. 17, 1947.

Ivan Ross Epperson
Julia Frost Epperson

This tract of land, comprising the N.E. 1/4 of the S.E. 1/4 of the S.E. 1/4 of Sec. 7, T1S, R1E of the Ute Meridian, was surveyed and platted under my direction from May 6 to 21, 1946.

Ray S. George
Registered Land Surveyor



This plat of the Epps Subdivision is accepted subject to the obligation to maintain only existing county highways shown hereon.

Mesa County Board of County Commissioners

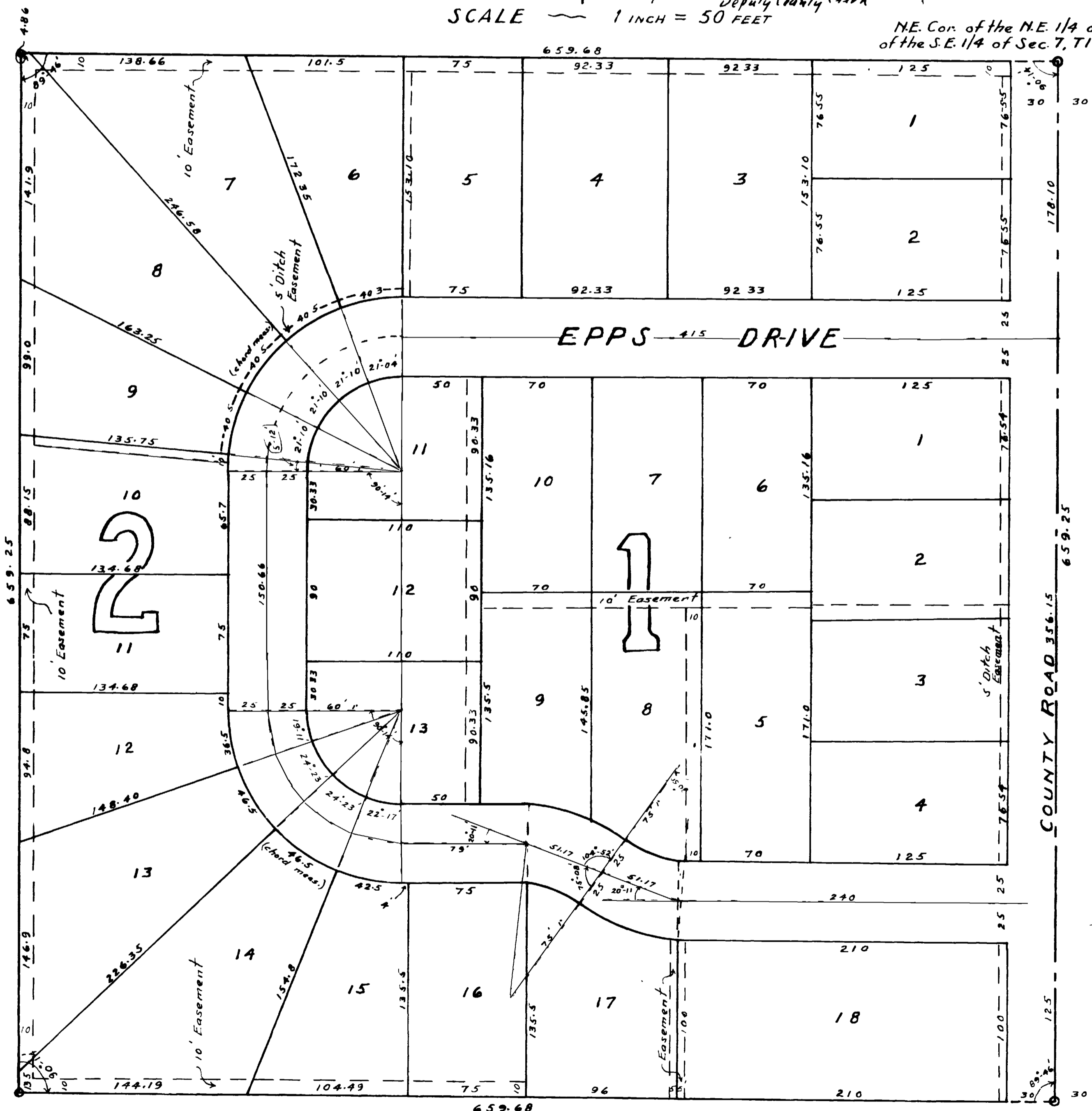
Dated May 22, 1946
Attest
A. P. Morse Deputy County Clerk

Approved May 22nd 1946, Mesa County Planning Commission By W. J. Gallan Chairman

Note: Boundaries are based on traverse connecting 3 known corners of Sec. 7; all lots to be sold subject to necessary easements, as shown on plat.

SCALE 1 INCH = 50 FEET

N.E. Cor. of the N.E. 1/4 of the S.E. 1/4 of the S.E. 1/4 of Sec. 7, T1S, R1E, Ute P.M.



Designed by I.R. Epperson and H.D. Clark.
Surveyed and drawn by H.D. Clark.