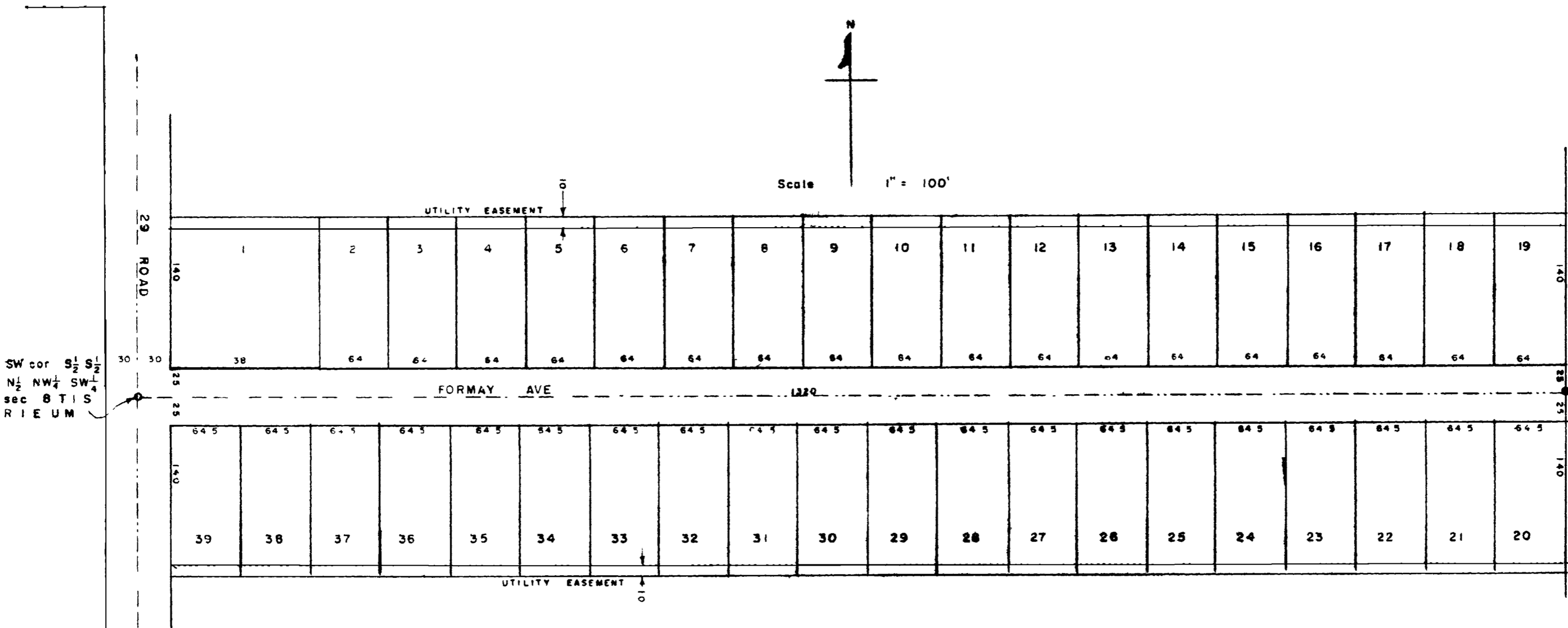




Scale 1" = 100'



SW cor S 1/2 S 1/2
N 1/2 NW 1/4 SW 1/4
sec 8 T 1 S
R 1 E U M

KNOW ALL MEN BY THESE PRESENTS That Forrest S Clodfelter and Edythe Mae Clodfelter, being the owners of the S 1/2 S 1/2 N 1/2 NW 1/4 SW 1/4 and the N 5 acres of the S 1/2 NW 1/4 SW 1/4 section 8 T 1 S R 1 E Ute Meridian, have caused the same to be surveyed and platted as shown hereon, have named the same Formay Subdivision, and do hereby dedicate the streets and easements as shown hereon to the use of the public forever. In witness whereof we have affixed our hands and seals.

Forrest S Clodfelter

Edythe Mae Clodfelter

STATE OF COLORADO }
COUNTY OF MESA } SS

The foregoing instrument was acknowledged before me this 25th day of January

A D 1955 by Forrest S Clodfelter and Edythe Mae Clodfelter

My commission expires Feb. 2, 1958

Frank Wiley Jr.
Notary Public

I hereby certify that this is a true and correct plat of survey of the above described land, and of the subdivision of the same

Ray S. George
County Surveyor
Registered Surveyor

MESA COUNTY COLORADO FORMAY SUBDIVISION



Formay Sub