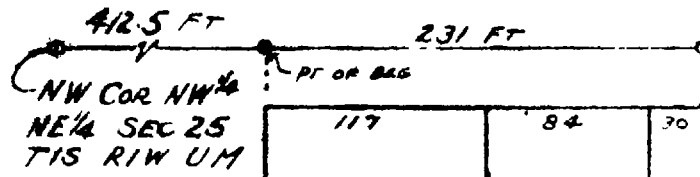


Plat of  
**FREEMANS**

**SUBDIVISION**

MESA COUNTY COLORADO



**KNOW ALL MEN BY THESE PRESENTS**

THAT WE THE UNDERSIGNED, EARNEST S. FREEMAN AND IONA MAY FREEMAN, BEING THE OWNERS OF THE FOLLOWING TRACT OF LAND TO WIT

THE WEST 7 ACRES OF THE E 13 ACRES OF THE WEST 25.5 ACRES OF THE NW 1/4 OF THE NE 1/4 SECTION 25, TWP 1 SOUTH, RANGE 1 WEST, UTE PRINCIPAL MERIDIAN IN MESA COUNTY, COLORADO ALSO DESCRIBED AS, BEGINNING AT A POINT 412.5 FT EAST OF THE NW CORNER OF THE NW 1/4 OF THE NE 1/4 OF SEC 25, TWP 1 S RANGE 1 WEST OF THE UTE PRINCIPAL MERIDIAN, THENCE EAST 231 FT, THENCE SOUTH 1321.4 FT, THENCE WEST 231 FT, THENCE NORTH 1321.5 FT TO POINT OF BEGINNING TO BE KNOWN AS

**FREEMANS SUBDIVISION**

THE ABOVE OWNERS HAVE CAUSED THIS TRACT OF LAND TO BE SURVEYED, PLATTED AND SUBDIVIDED AS SHOWN ALL STREETS SHOWN HEREON ARE HEREBY DEDICATED TO THE PUBLIC FOREVER.

WITNESS OUR HANDS AND SEALS THIS 3<sup>RD</sup> DAY OF FEBRUARY 1947

Ernest S. Freeman  
EARNEST S. FREEMAN

Iona May Freeman  
IONA M. FREEMAN

STATE OF COLORADO }  
COUNTY OF MESA } SS

ACKNOWLEDGED FEBRUARY 3, 1947, BEFORE ME, A NOTARY PUBLIC IN MESA COUNTY, COLORADO BY EARNEST S. FREEMAN AND IONA MAY FREEMAN.

Ernest Laveron  
NOTARY PUBLIC

MY COMMISSION EXPIRES JANUARY 19, 1950

THIS PLAT OF FREEMANS SUBDIVISION IS ACCEPTED FOR FILING SUBJECT TO THE OBLIGATION TO MAINTAIN ONLY EXISTING COUNTY HIGHWAYS SHOWN HEREOF

MESA COUNTY BOARD OF COUNTY COMMISSIONERS

DATED 2-20-47

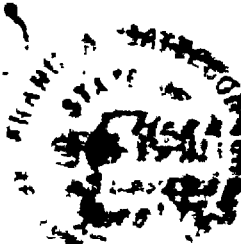
[Signature]  
DEPUTY COUNTY CLERK

C. C. [Signature]  
Walter [Signature]  
[Signature]

APPROVED FEB-4-1947

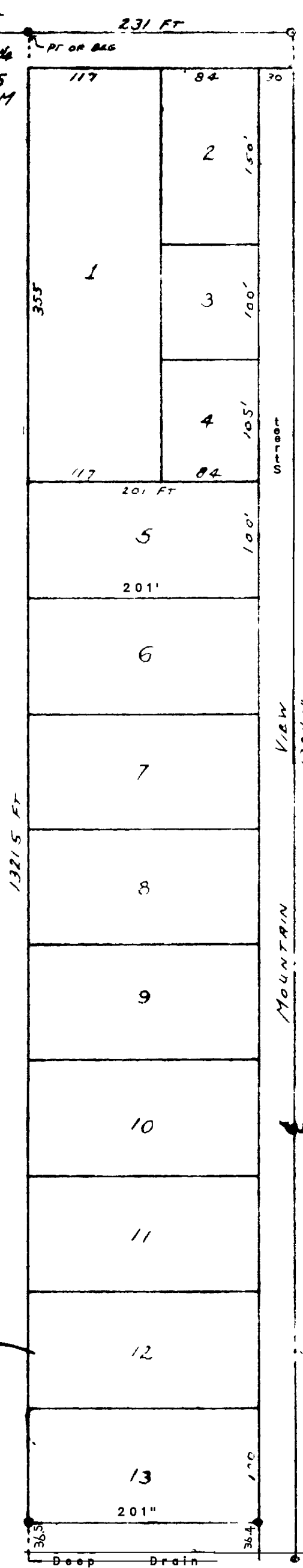
MESA COUNTY PLANNING COMMISSION

[Signature]  
CHAIRMAN



CERTIFY THAT THIS TRACT OF LAND IN THE NW 1/4 OF SECTION 25 T1S R1W U1M PLATTED AND SUBDIVIDED BY ME IN JANUARY 1947 IS A TRUE AND CORRECT PLAT OF SAID SURVEY

Frank A. Matton  
COUNTY SURVEYOR



Freeman's Sub