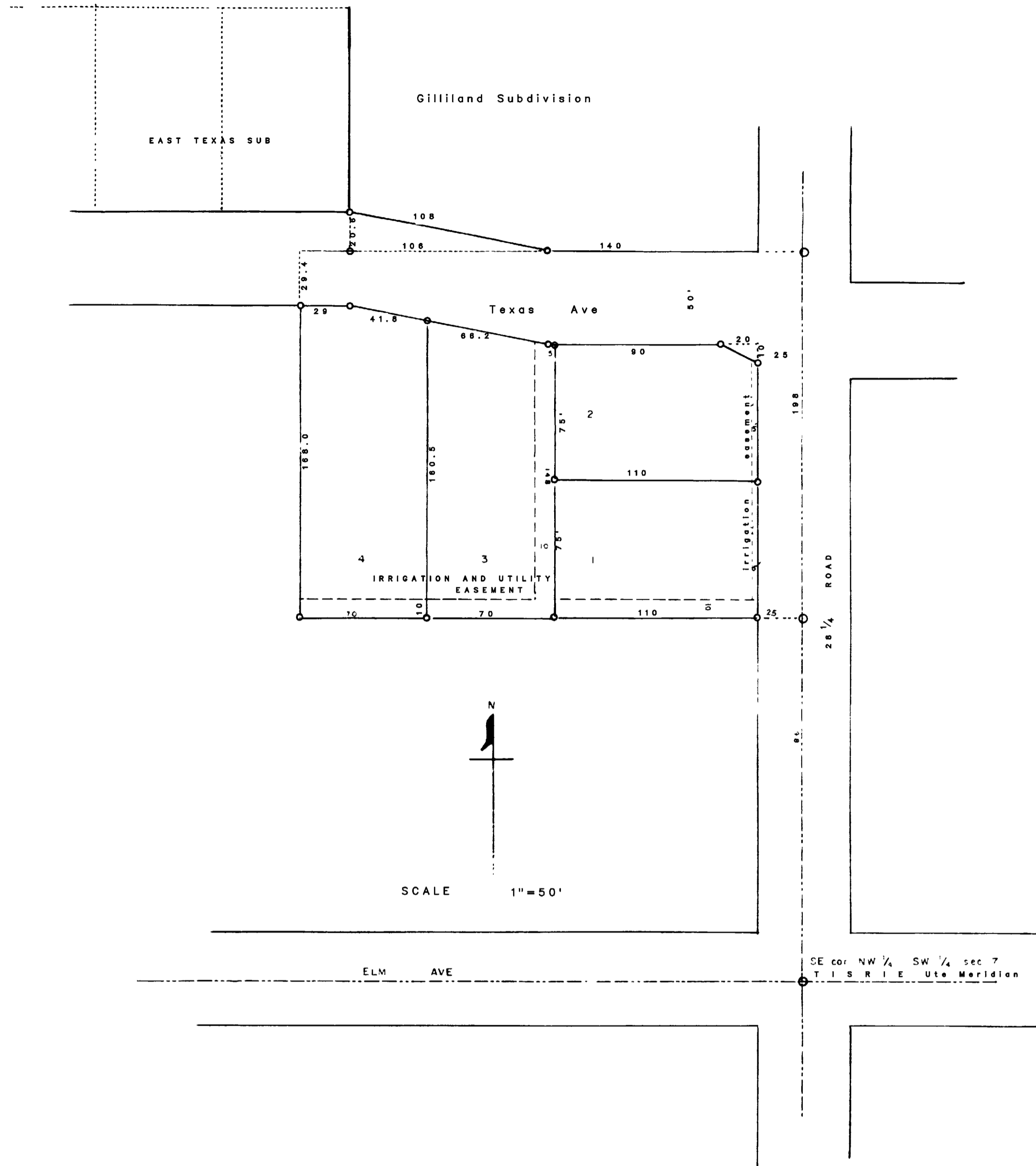


KNOW ALL MEN BY THESE PRESENTS That the undersigned, Louis P Gilliland, Imogene A Gilliland, Goldie Sanders, and L B Sanders, being the owners of the East 1/2 of the East 1/2 of the South 1/2 of the SE 1/4 NW 1/4 SW 1/4 except the South 198 feet thereof, also beginning at a point 396 feet North and 140 feet West of the SE corner of the NW 1/4 SW 1/4 section 7 T1S R1E Ute Meridian, thence West 106 feet, thence North 20 6 feet, thence Southeasterly 108 feet to the point of beginning all in section 7 T1S R1E Ute Meridian. Have caused the same to be subdivided and platted as shown hereon; they do hereby set apart and dedicate the streets and roads, as shown hereon, to the use of the public forever, they also dedicate utility easements as shown hereon, for the construction, operation and maintenance of telephone and power lines, sewer, water and gas mains, irrigation ditches and structures, and other utilities, they also name the same GILLILAND SUBDIVISION. It is understood and agreed that the County of Mesa, shall not be held liable for the cost of construction of the roads, utilities or ditches in this subdivision. In witness whereof they have hereunto placed their hands this 21st day of December 1957 A D 1957



Goldie Sanders
Goldie Sanders

Louis P. Gilliland
Louis P. Gilliland

L. B. Sanders
L. B. Sanders

Imogene A. Gilliland
Imogene A. Gilliland

STATE OF COLORADO }
County of Mesa } SS

The foregoing instrument was acknowledged before me this 21st day of December 1957 by Louis P. Gilliland, Imogene A. Gilliland, Goldie Sanders and L. B. Sanders. My commission expires September 10, 1960.

Harry M. Janell
Notary Public

Approved by the Mesa County Planning Commission this 23rd day of December 1957

By Ernest H. Allen
Chairman

Approved by the Fruitvale Planning Commission this 23rd day of December 1957

By Harold W. Matzelt
Chairman

Approved by the Board of County Commissioners of the County of Mesa, State of Colorado this 30th day of December 1957

By W. E. ...
Chairman

I, Roy L. George, certify that this is a true and correct plat of survey of the above described land and of the subdivision of the same

Roy L. George
County Surveyor, R & S

I certify that this instrument was filed in my office at 10:59 O'clock A.M. this 21st day of December 1957 and is recorded in plat book _____ of page _____

...
County Clerk and Recorder

By _____
Deputy

70165