

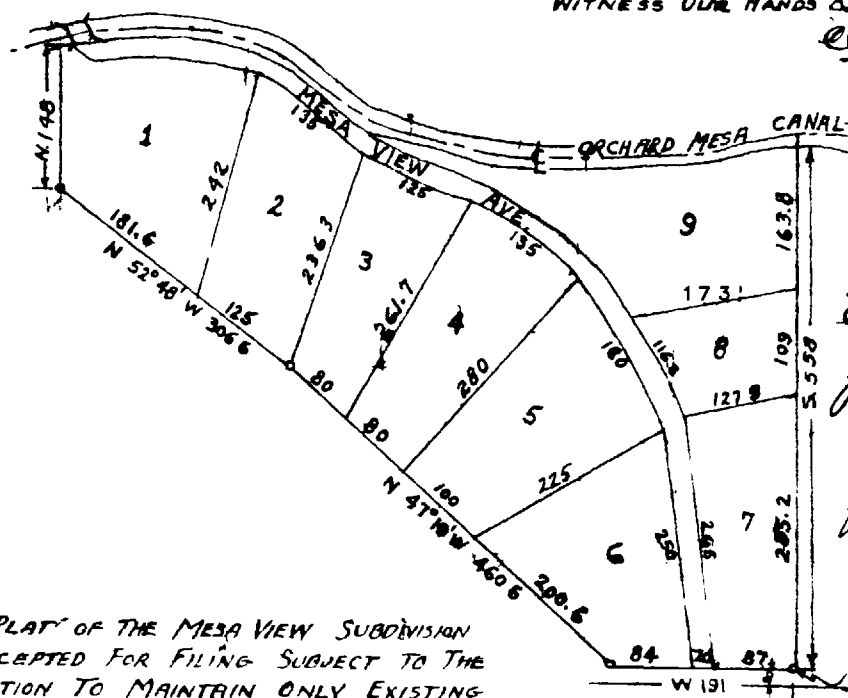
PLAT OF
MESA VIEW SUBDIVISION
 SCALE 1"=200'

Know ALL MEN BY THESE PRESENTS THAT WE, CLARENCE H. EVERETT & EFFIE M. EVERETT do HEREBY PLAT AND SUBDIVIDE THE "MESA VIEW SUBDIVISION" LOCATED AS FOLLOWS:

BEGINNING AT A POINT 52.8' FT. W. AND 20 FT. N. OF THE S.E. CORNER OF THE N.E. 1/4 OF THE S.E. 1/4 OF SECTION 26, TWP 1 S, RANGE 1 W, UTE MERIDIAN, THENCE W 191 FT., N47°19' W 460.6 FT., N52°48' W 306.6 FT. TO POINT 20 FT. E. OF W. LINE OF SAID N.E. 1/4 OF S.E. 1/4 OF SECTION 26; THENCE N. 148 FT., THENCE S. EASTERLY PARALLEL TO AND 12 FT. FROM THE E. OF THE ORCHARD MESA CANAL TO A POINT DUE N. OF THE PLACE OF BEGINNING, THENCE S. 558 FT. MORE OR LESS TO THE PLACE OF BEGINNING CONTAINING 7.35 ACRES. ALL ROADS AND STREETS ARE DEDICATED TO THE PUBLIC FOREVER.

WITNESS OUR HANDS & SEALS THIS 25TH DAY OF MARCH, 1946

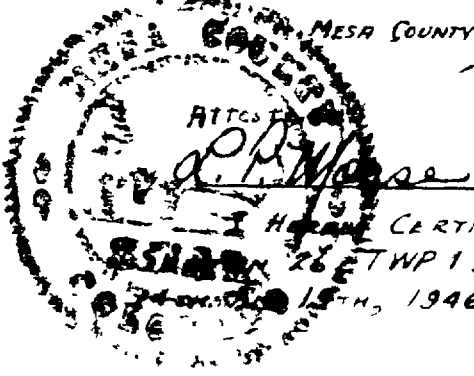
Clarence H. Everett
Effie M. Everett



STATE OF COLORADO } SS
 COUNTY OF MESA }
 THIS INSTRUMENT WAS ACKNOWLEDGED BEFORE ME MARCH 15, 1946, BY CLARENCE H. EVERETT & EFFIE M. EVERETT
J. E. Keaton
 NOTARY PUBLIC
 MY COMMISSION EXPIRES
January 19th 1950

THIS PLAT OF THE MESA VIEW SUBDIVISION IS ACCEPTED FOR FILING SUBJECT TO THE OBLIGATION TO MAINTAIN ONLY EXISTING COUNTY HIGHWAYS SHOWN HEREBY

MESA COUNTY BOARD OF COUNTY COMMISSIONERS



W. J. [Signature]
W. J. [Signature]

I HEREBY CERTIFY THAT THIS TRACT OF LAND IN THE N.E. 1/4 OF THE S.E. 1/4 OF SECTION 26 TWP 1 S, RANGE 1 W, UTE MERIDIAN WAS SURVEYED BY ME ON MARCH 15TH, 1946 THIS IS A TRUE AND ACCURATE SURVEY

Approved 3/20/46
 Mesa County Planning Commission
[Signature] - Chairman



Frank A. Matteson
 COUNTY SURVEYOR