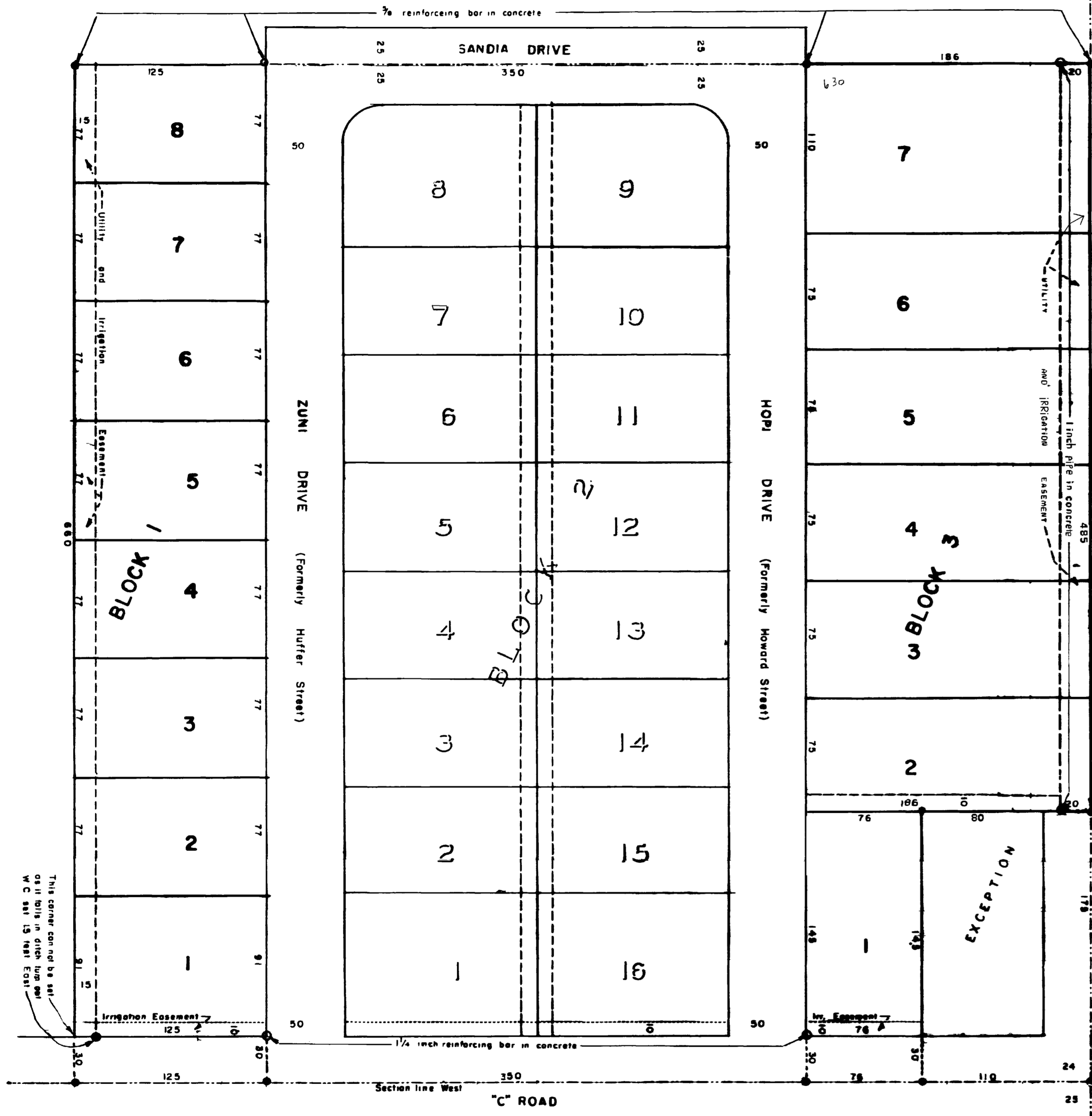


**BLOCKS 1 and 3 of the OPLINGER SUBDIVISION**



MESA COUNTY COLORADO.

KNOW ALL MEN BY THESE PRESENTS: That the undersigned, Howard M Oplinger and A Josephine Oplinger, being the owners of the following described land; the West 125 feet and the East 186 feet except the East 110 feet of the South 175 feet all in the SE 1/4 SE 1/4 SE 1/4 section 24 T1S R1W Ute Meridian, have caused the same to be surveyed and platted as shown hereon, have named place BLOCKS 1 and 3 OPLINGER SUBDIVISION, they do hereby set apart and dedicate the roads as shown hereon to the use of the public forever, they also dedicate the utility easements, as shown hereon for the construction, operation and maintenance of telephone and power lines, sewer, water and gas mains, and the irrigation easements for the construction, operation and maintenance of irrigation ditches. It is understood and agreed that the County of Mesa shall not be held liable for the cost of construction of any roads, utilities or ditches within this subdivision. In witness whereof we have hereunto placed our hands this 16<sup>th</sup> day of March 1960

Howard M. Oplinger  
Howard M Oplinger  
A Josephine Oplinger  
A Josephine Oplinger

STATE OF COLORADO }  
County of Mesa } SS

The foregoing instrument was acknowledged before me this 16<sup>th</sup> day of March AD 1960

by Howard M Oplinger and A Josephine Oplinger

My commission expires January 6, 1963

L. M. Finnessey  
Notary Public

APPROVED:

By the Mesa County Planning Commission this 29<sup>th</sup> day of February 1960 by E. Lin Gray Chairman

By the Board of County Commissioners this 29 day of February 1960 by Henry J. Zuppler Chairman

I, Ray L. George, certify that this is a true and correct plat of survey of the above described land and of the subdivision of the same.

Ray L. George  
County Surveyor, L. S.

STATE OF COLORADO }  
County of Mesa } SS

763932

I certify that this instrument was filed in my office at 1:02 O'clock P M on the 16 day of March 1960 and is recorded in plat book 9 of page 96

Annis M. Dunston  
County Clerk and Recorder

By \_\_\_\_\_  
Deputy

133 d Oplinger Sub B1R 1+3

SCALE 1"=50'