

KNOW ALL MEN BY THESE PRESENTS: That the undersigned, E. H. Ormsbee, Walter E. Adelman, Milda E. Adelman and the Mesa County Valley School District No. 51 by John W. Burkey, President, H. V. Zimmerman, Secretary, being the owners of the following described land, the South 1/2 of the SE 1/4 NW 1/4 SE 1/4, the South 25 feet of the NW 1/4 SE 1/4 NW 1/4 SE 1/4 except the East 225 feet thereof, all in Section 7 T1S R1E Ute Meridian as shown by the plat hereon: That said owners have caused said land to be surveyed and plotted as shown hereon, have named said subdivision, ORMSBEE SUBDIVISION, and do hereby set apart and dedicate the roads and avenues, as shown hereon, to the use of the public forever: That said owners do hereby dedicate the utility easements, as shown hereon, for the construction, operation and maintenance of telephone and power lines, sewer, water and gas mains and other utilities! The irrigation easements, as shown hereon, are hereby dedicated for the construction, operation and maintenance of ditches, flumes and conduits. It is understood and agreed that the County of Mesa shall not be held liable for the cost of construction of roads, utilities or ditches within this subdivision.

In witness whereof we have hereunto subscribed our names this 2nd day of DECEMBER 1957.

E. H. Ormsbee E. H. Ormsbee Walter E. Adelman Walter E. Adelman Milda E. Adelman Milda E. Adelman Mesa County Valley School District No. 51 by John W. Burkey President
 Attest H. V. Zimmerman Secretary

STATE OF COLORADO SS
 County of Mesa

The foregoing instrument was acknowledged before me this 2nd day of December A.D. 1957 by E. H. Ormsbee,

Walter E. Adelman, Milda E. Adelman and Mesa County Valley School District No. 51 by John W. Burkey, President, H. V. Zimmerman, Secretary.

My commission expires January 6, 1959

L. M. Finnessey
 Notary Public

Approved this 29th day of November 1957 by the Fruitvale Planning Commission

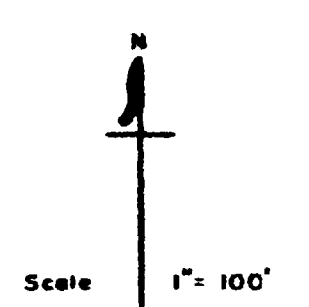
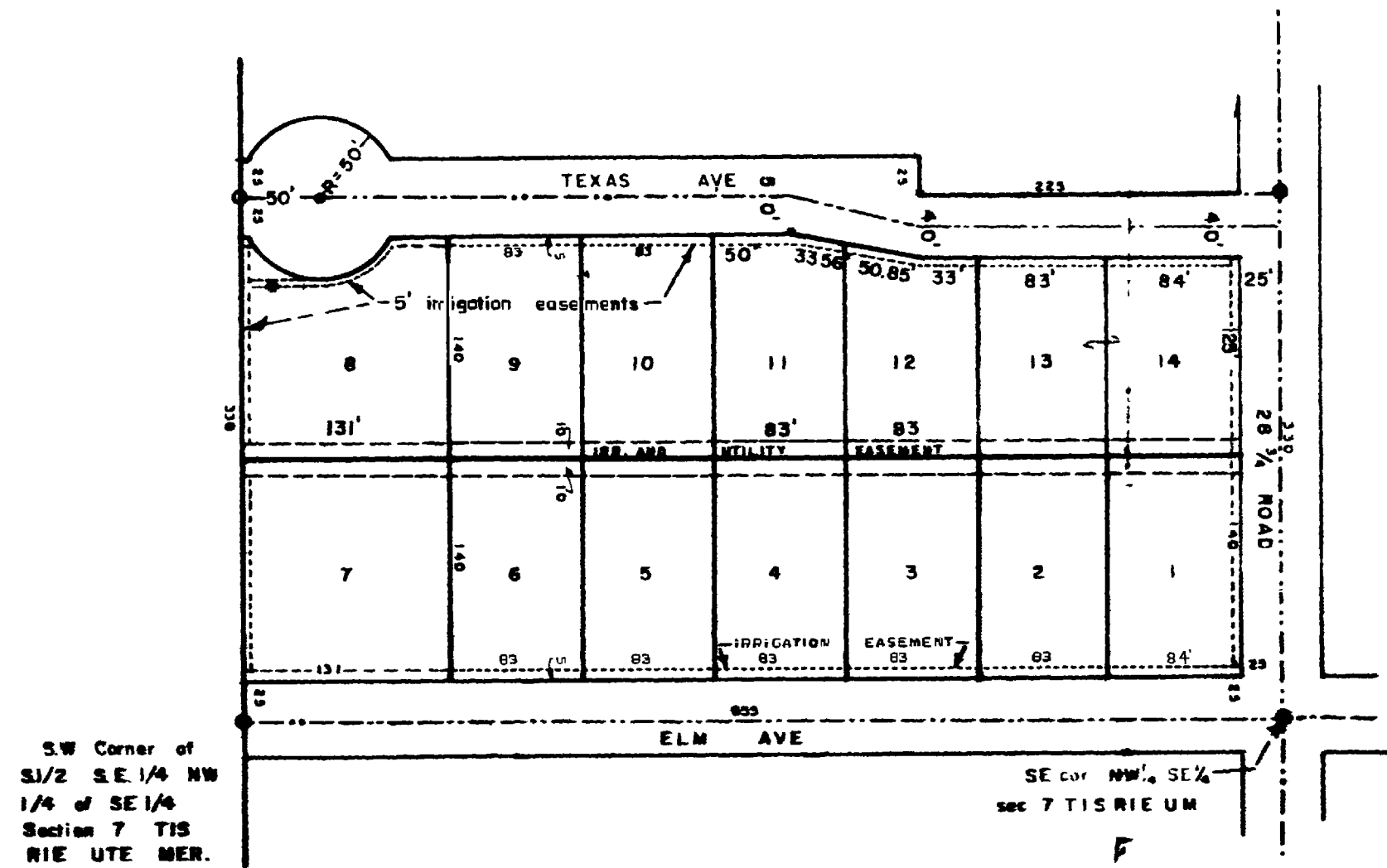
By Benjamin M. Matlock
 Chairman

Approved this 7th day of Dec 1957 by the Mesa County Planning Commission

By Eugene Hanaman
 Chairman

Approved this 29th day of NOVEMBER 1957 by the Board of County Commissioners of Mesa County, Colorado

By R. E. Saunders
 Chairman



MESA COUNTY COLORADO
 ORMSBEE SUBDIVISION

I Ray L. George hereby certify that this is a true and correct plat of survey of the above described land and of the subdivision of the same

Ray L. George
 County Surveyor, R. L. S.

I certify that this instrument was filed in my office at 11:15 O'clock A.M. this 7th day of December 1957 and is recorded in plat book 7 at page _____

Amie M. Dunbar
 County Clerk and Recorder Mesa County, Colorado

By _____
 Deputy

707603

Ormsbee Sub.