

LOTS 1 TO 6 INC BLOCK 5
 LOTS 1 TO 4 INC BLOCK 8
PARTEE HEIGHTS

MESA COUNTY COLORADO

KNOW ALL MEN BY THESE PRESENTS That the undersigned, A. L. Partee, and Howard Stewart, being the owners of the following described land, to-wit,
 Beginning at a point 100.5 feet West of the SE corner of the SW 1/4 SE 1/4 section 36 T1N R1W Ute Meridian, thence West 155 feet, thence North 208.6 feet,
 thence N 39° 30' E 422.3 feet, thence N 29° 45' E 176 feet, thence N 51° 18' W 170 feet, thence N 39° 30' E 50 feet, thence N 41° 43' E 89 feet, thence
 North 80 feet, thence
 N 70° W 170 feet, thence N 43° 39' E 150 feet, thence N 6° 24' W 128.4 feet, thence East 111.7 feet, thence S 45° E 111.5 feet, thence South 788.8 feet,
 thence along a curve to the right with a radius of 100 feet through a central angle of 56°, thence S 56° W 231.3 feet, thence along a curve to the left with a radius
 of 100 feet through a central angle of 56°, thence South 106.8 feet to the point of beginning, have caused the same to be surveyed and plotted as shown
 hereon. They do hereby set apart and dedicate the roads as shown hereon to the use of the public for ever, the utility easements are dedicated for the construction,
 operation and maintenance of telephone and power lines, sewer, water and gas mains and other utilities. All lots are subject to an irrigation easement 5 feet wide
 along the boundary lines. They do hereby name said place PARTEE HEIGHTS and on this plat show lots 1 to 6 inc of block 5 and lots 1 to 4 inc block 8 of the
 said Partee Heights.

It is understood and agreed that the County of Mesa shall not be held liable for the cost of construction of the roads, ditches or utilities within
 this subdivision.

In witness whereof we have hereunto placed our hands this 14th day of February 1959

A. L. Partee
 A. L. Partee
Howard Stewart
 Howard Stewart

STATE OF COLORADO SS
 County of Mesa

The foregoing instrument was acknowledged before me this 14th day of February AD 1959

by A. L. Partee and Howard Stewart

My commission expires January 6, 1963

L. M. Finney
 Notary Public

APPROVED: By the Fruitvale Planning Commission this 14 day of Feb. 1959 by C. B. Grant
 Chairman

By the Mesa County Planning Commission this 16 day of Feb. 1959 by E. L. Gray
 Chairman

By the Board of County Commissioners this 16th day of Feb. 1959 by R. E. Anderson
 Chairman

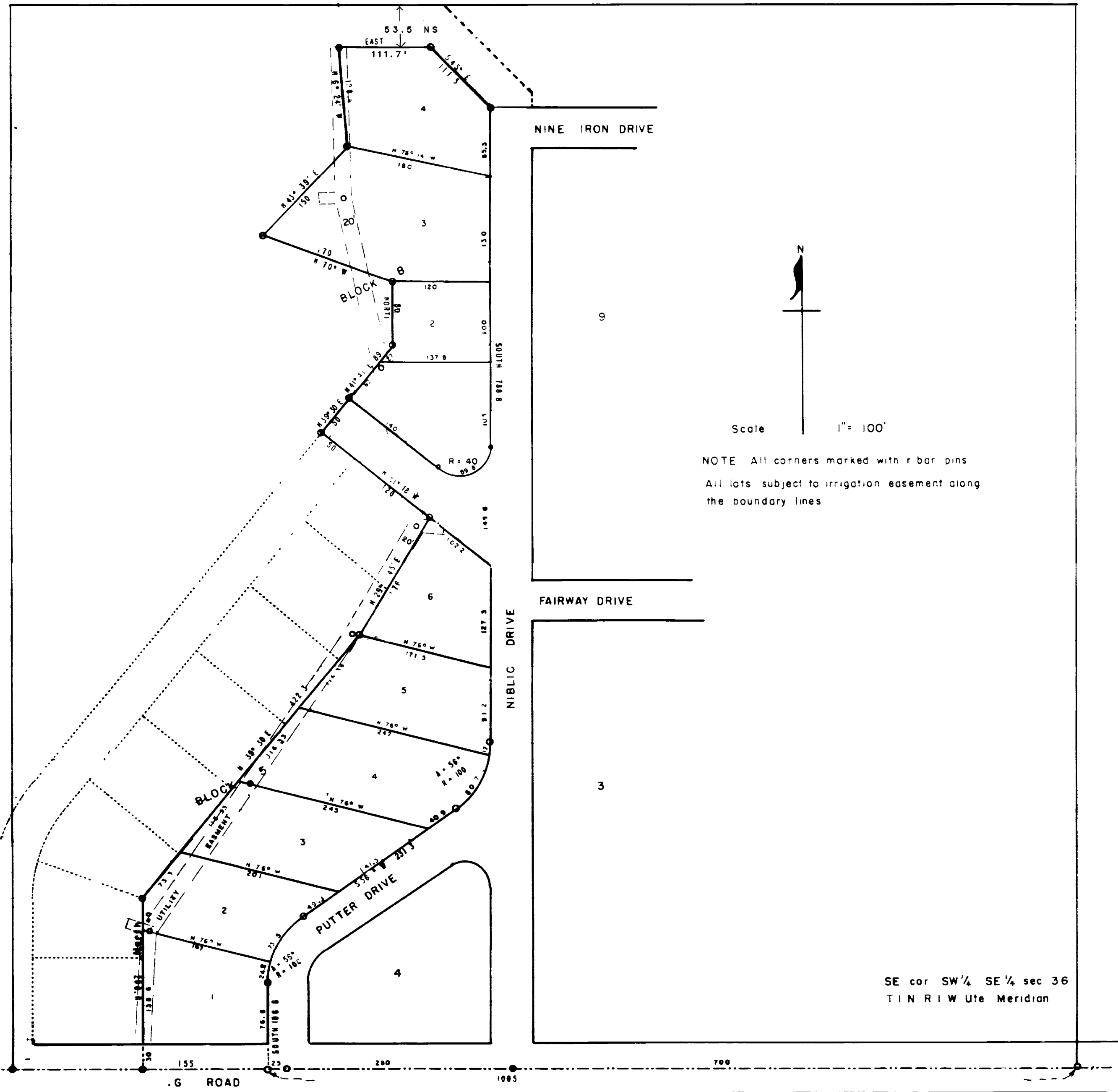
I certify that this instrument was filed in my office at
2:15 o'clock P. M. this 14 day of FEB - 3 1959
 and is recorded in plat book 9 at page 64

I, Roy L. George, certify that this a true and correct plat of survey
 of the above described land and of the subdivision of the same

Roy L. George
 County Surveyor, R. S.

741010 Arnie M. Dunton
 County Clerk and Recorder

By _____
 Deputy



NOTE: All corners marked with r bar pins
 All lots subject to irrigation easement along
 the boundary lines

SE cor SW 1/4 SE 1/4 sec 36
 T1N R1W Ute Meridian